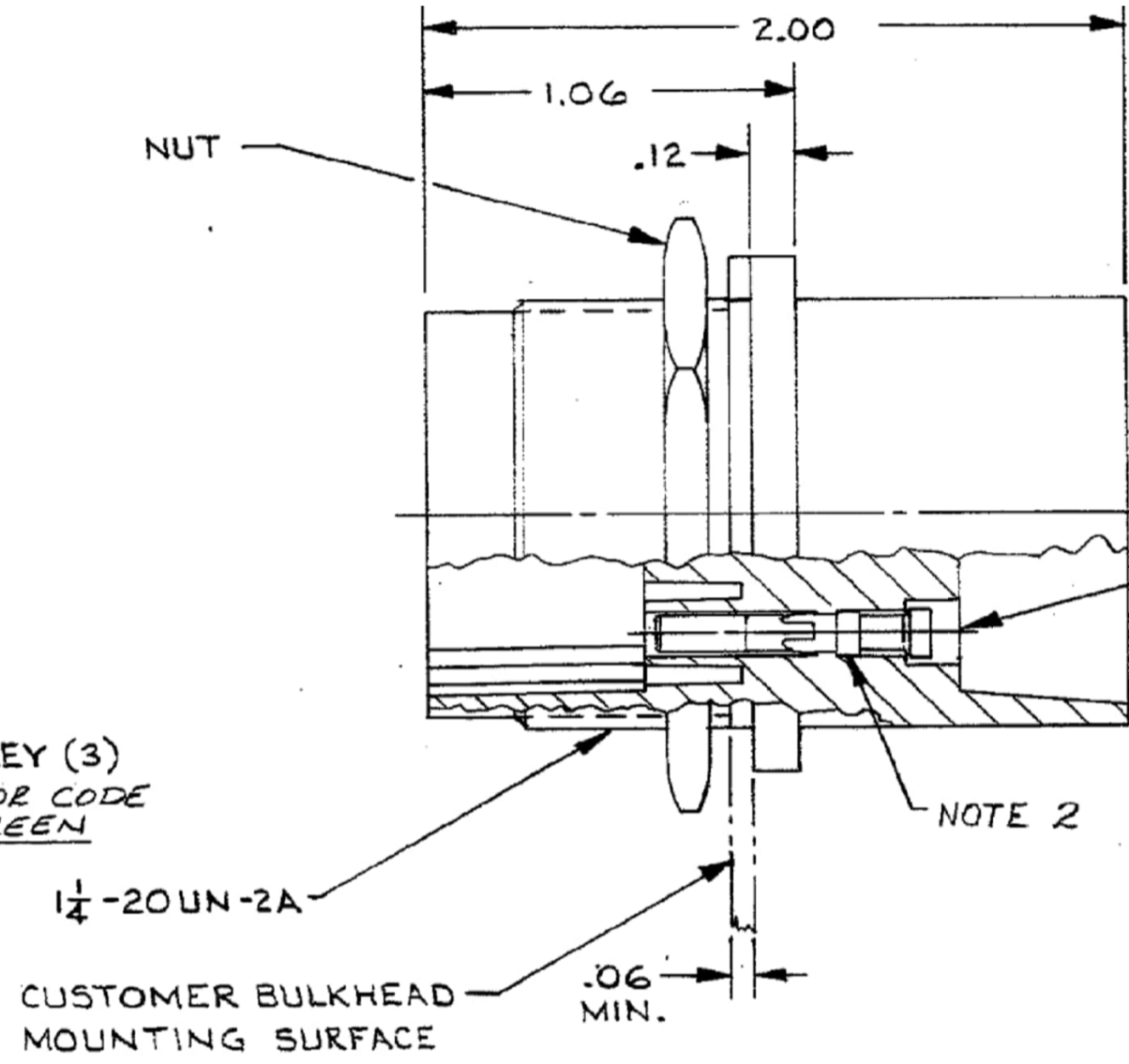
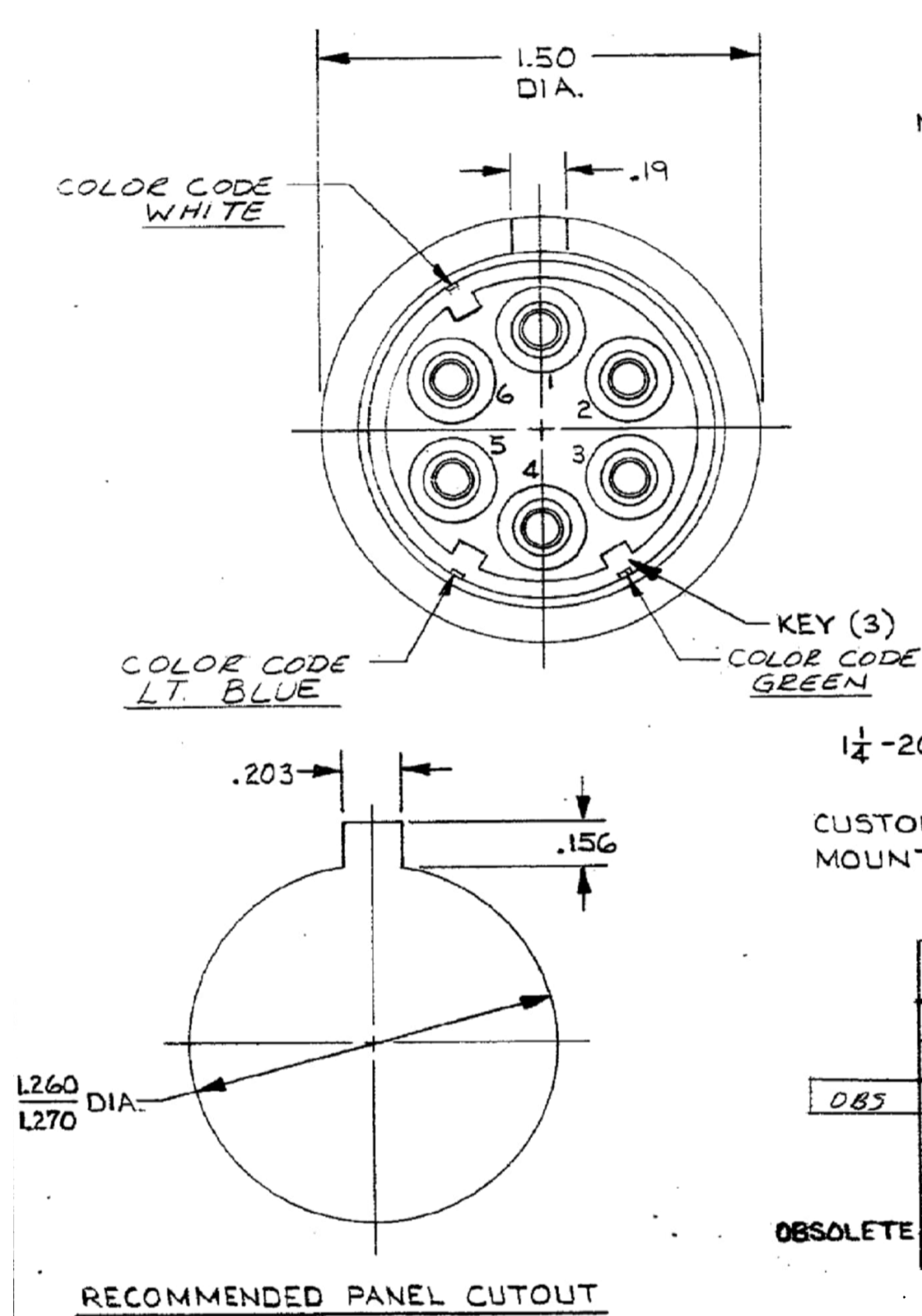


WARNING - THIS DOCUMENT CONTAINS TECHNOLOGY WHOSE EXPORT IS RESTRICTED BY THE EXPORT ADMINISTRATION REGULATIONS ("EAR") PURSUANT TO 15 C.F.R. PARTS 730-774. VIOLATIONS OF THE EAR ARE SUBJECT TO SEVERE CRIMINAL PENALTIES UNDER THE EXPORT CONTROL REFORM ACT, AS AMENDED (TITLE 50, U.S.C., SEC. 4801, ET SEQ.).

REVISIONS				
P	LTR	DESCRIPTION	DATE	APVD
R		REV PER ECN-25-361606	30DEC2025	LP JG



CUSTOMER TO ATTACH LEADS & PROTECT AGAINST ARC-OVER & BREAKDOWN BY POTTING. SOCKETS TO BE COATED WITH RTV 108 AND INSERTED IN CAVITIES, AFTER CURING FILL BACK END OF RECEPTACLE WITH HYSOL 4210 (REF. AMP * 1-859234-7)

NOTES:

1. CAVITY TO ACCEPT AMP SOCKETS, TYPE II, #16 GA. RECEPTACLE AND SOCKETS TO BE SHIPPED SEPARATELY. TO REMOVE SOCKETS USE AMP EXTRACTION TOOL #861751-1
2. TYPE II SOCKETS TO ACCEPT ONE (1) #22, 20, OR #24 AWG STRANDED WIRE. GOLD PLATED PER MIL-G-45204 TYPE II .000050 MIN. THICKNESS.
3. RECEPTACLE WILL WITHSTAND WITHOUT BREAKDOWN, 27KVDC PIN TO PIN & 27KVDC PIN TO GRD. WHEN MATED WITH 859536-1, 859534-1, & 860267-1
4. PART MARKED
5. TYPE II SOCKETS TO EXCEPT ONLY ONE (1) 16 AWG OR (1) 18 AWG STRANDED WIRE
6. TYPE II SOCKETS TO ACCEPT ONE (1) 14 AWG STRANDED WIRE.

*UNMARKED

AMP P/N	WIRE SIZE RANGE	HAND TOOL	COLOR CODING
859527-1	20, 22, 24	45099	YES
859527-2	16, 18	45098	YES
085 859527-3	14	45098	YES
859527-4	20, 22, 24	45099	NO
859527-5	16, 18	45098	NO
859527-6	14	45098	NO
OBSOLETE 859527-7 *	16, 18	45098	NO

THIS DRAWING IS A CONTROLLED DOCUMENT.		DWN 12DEC2025 L.PROSPERI	TE Connectivity	
DIMENSIONS: INCHES		CHK 12DEC2025 R.LACUESTA		
TOLERANCES UNLESS OTHERWISE SPECIFIED:		APVD 12DEC2025 J.GUNDERMANN	NAME RECEPTACLE, FLANGED, H.V. 6 CONTACT LGH	
0 PLC ± -		PRODUCT SPEC	SIZE CAGE CODE DRAWING NO RESTRICTED TO	
1 PLC ± -		APPLICATION SPEC	WEIGHT 0 A2 00779 C=859527	
2 PLC ± .04			SCALE NONE SHEET 1 of 1 REV R	
3 PLC ± .015				
4 PLC ± -				
ANGLES ± -				
MATERIAL MOLDED PLASTIC		FINISH BLACK		