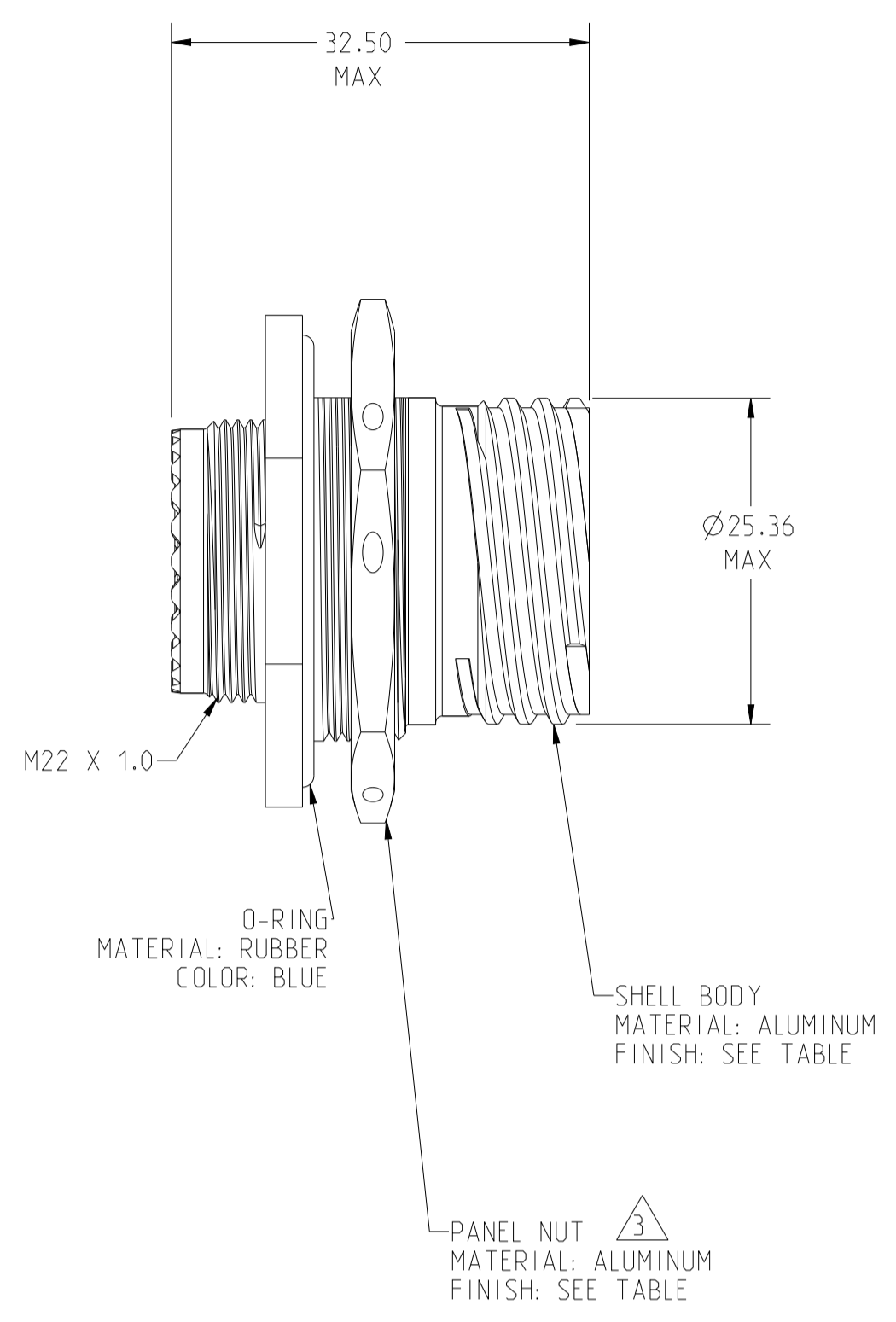
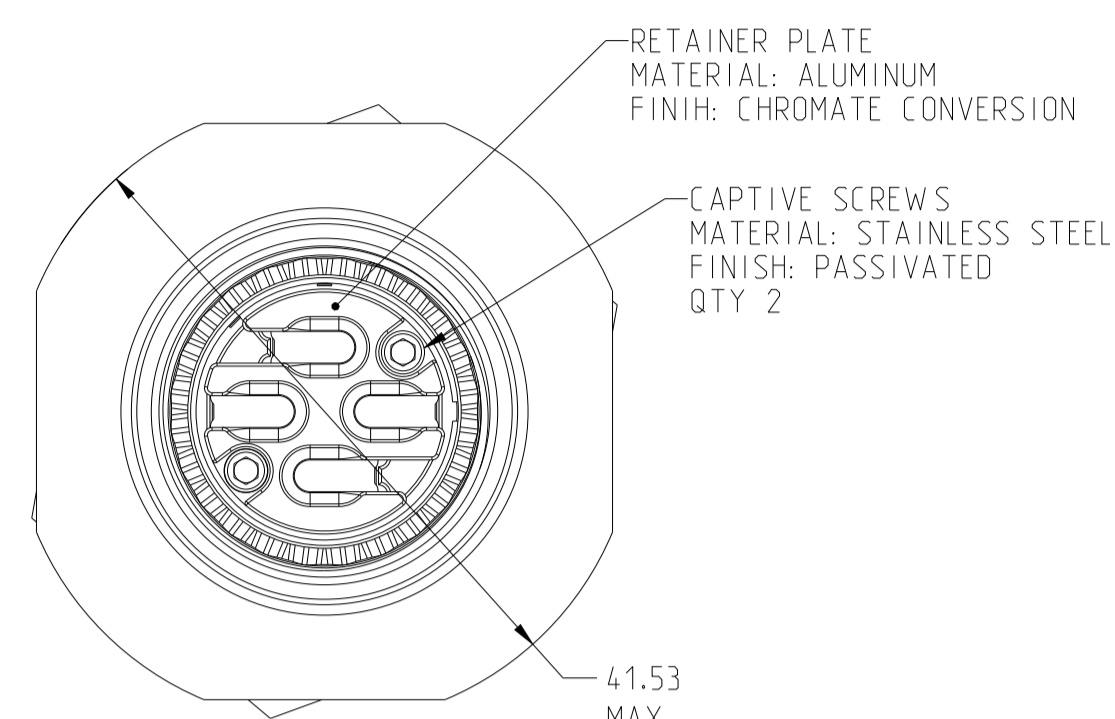
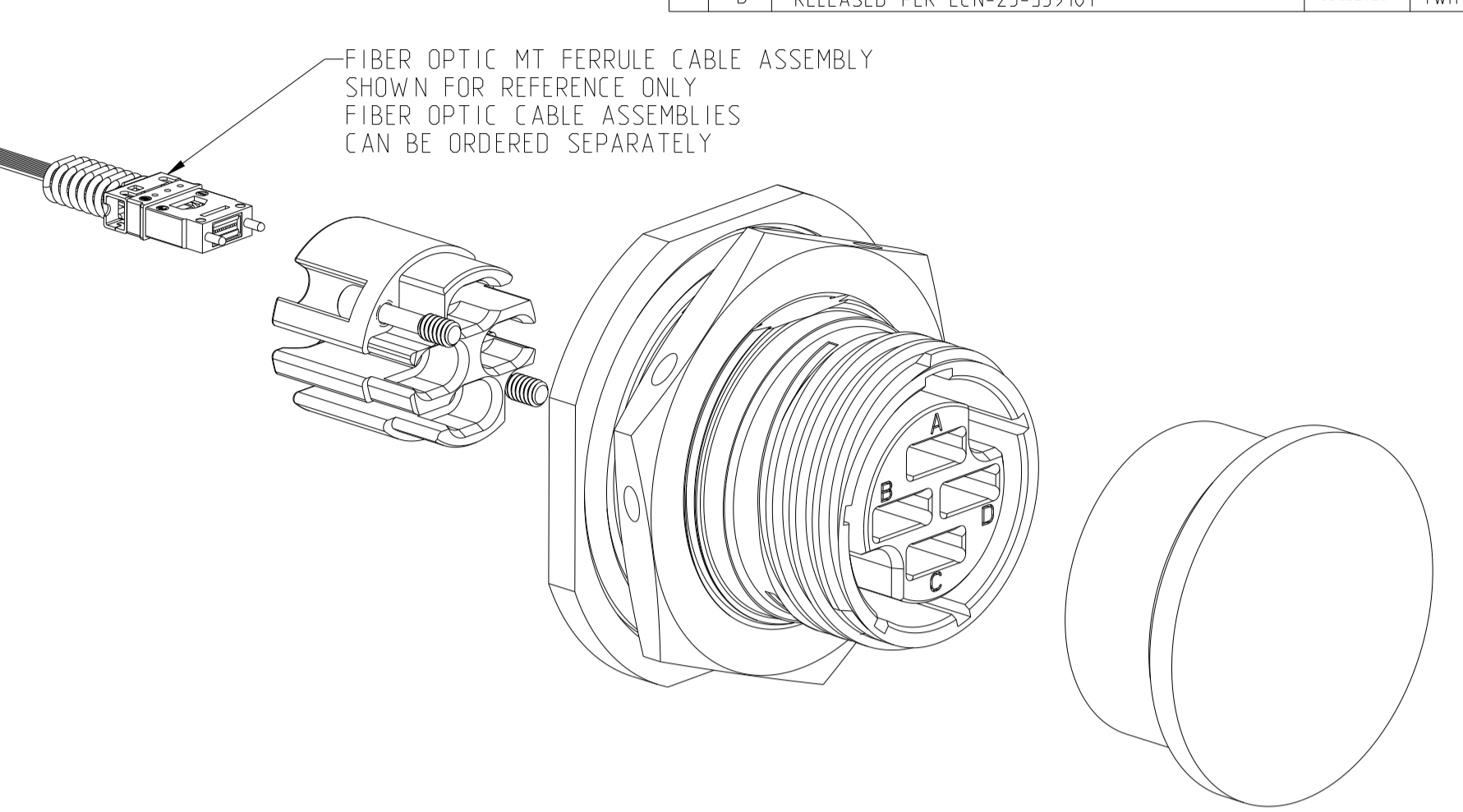
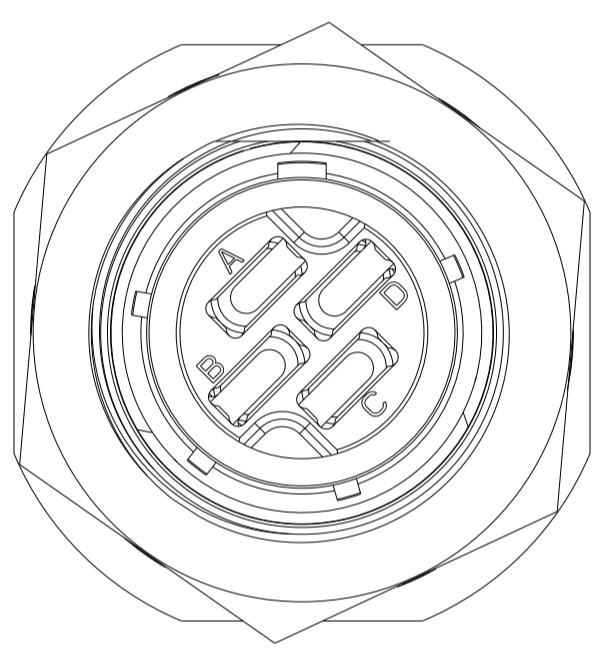
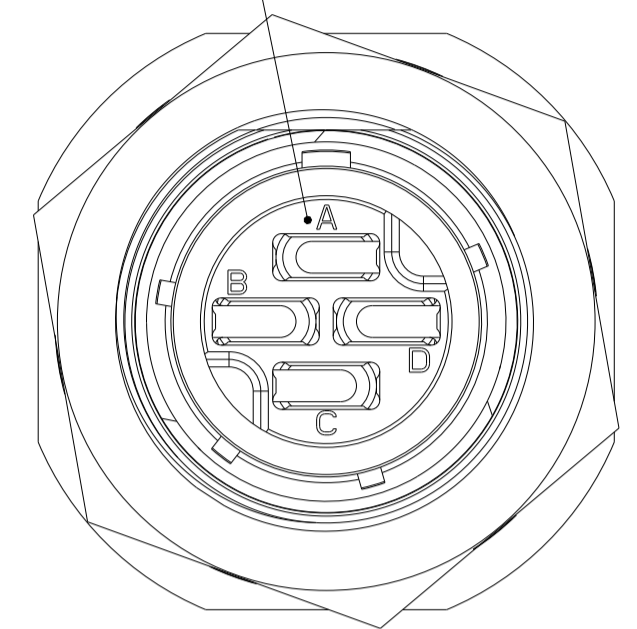


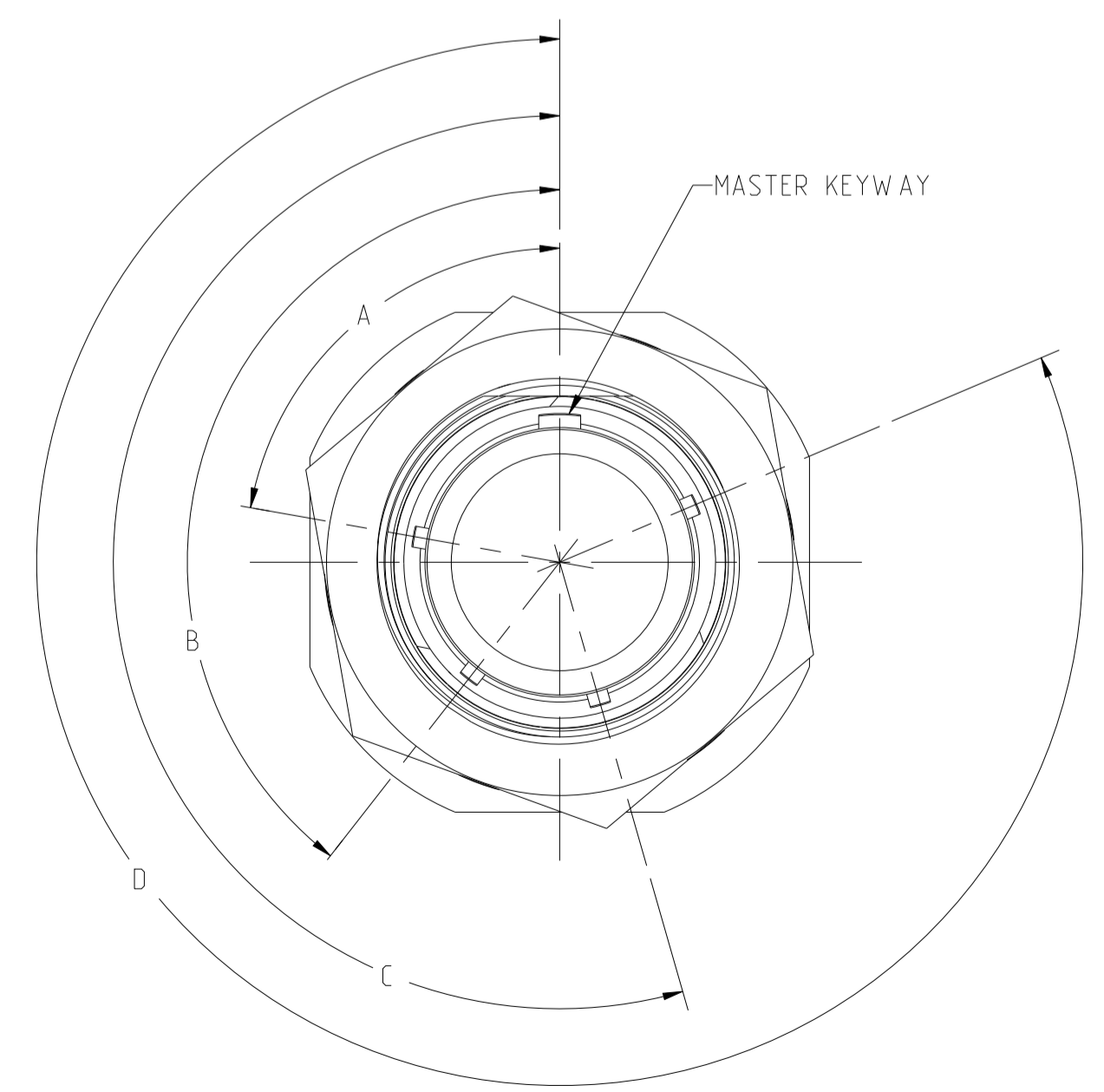
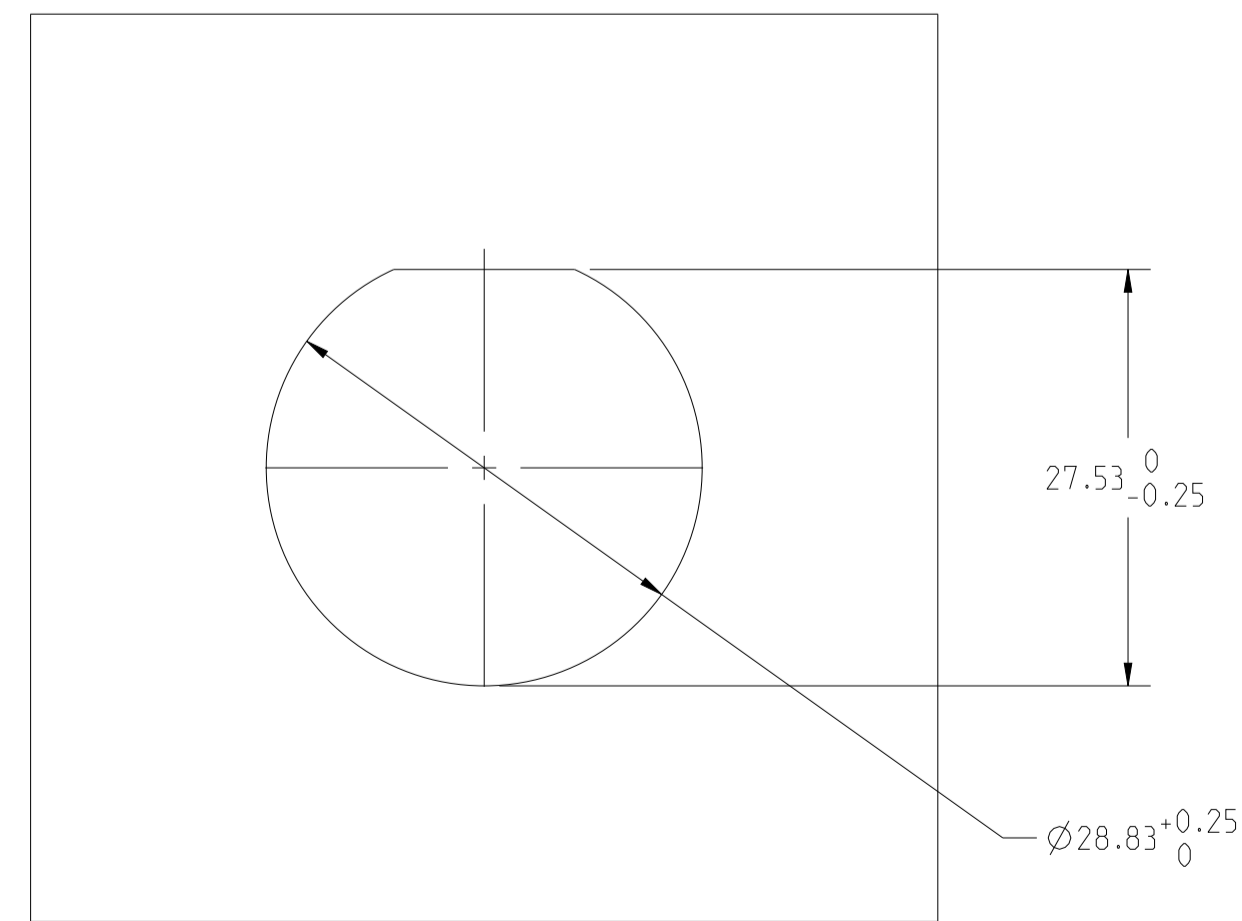
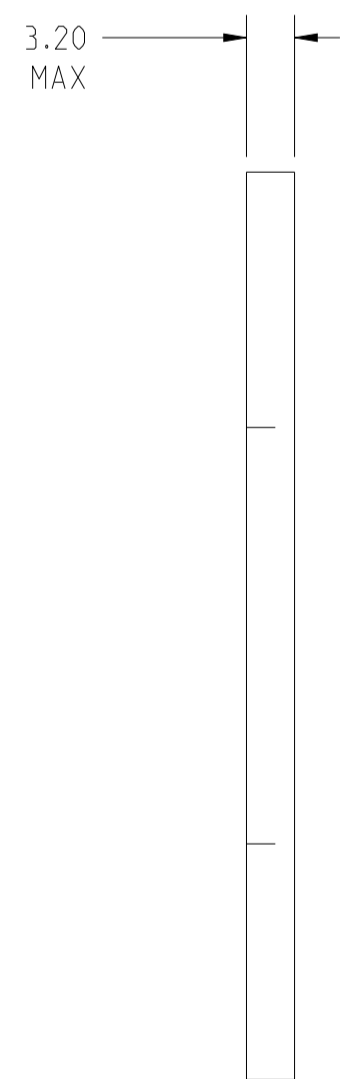
REVISIONS				
P	LTN	DESCRIPTION	DATE	APPV
1		PROPOSED	19NOV2020	-
2		REVISED PANEL CUT-OUT	14MAY2021	DF DR
3		ADD DUST CAP	02JUL2021	CG DR
4		ADD NICKEL PTFE ASSEMBLIES	30JAN2023	CG DR
A		RELEASED PER ECN-23-223284	26JUL2023	MM DR
B		RELEASED PER ECN-25-359101	16DEC2025	1wh DR



4 POSITION MT FIBER INSERT
MATERIAL: NICKEL SILVER COPPER
INSERT RETAINING RING
MATERIAL: STAINLESS STEEL
FINISH: PASSIVATED
INTERFACIAL SEAL
MATERIAL: RUBBER
COLOR: RED



- △ FINISH: OLIVE DRAB, CADMIUM.
- △ FINISH: NICKEL, ELECTROLESS
- △ REFERENCE MIL-DTL-38999 SPECIFICATION FOR PANEL NUT INSTALLATION TORQUE VALUE.
- △ FINISH: NICKEL PTFE
- △ FINISH: BLACK ZINC



KEYING ORIENTATION	A	B	C	D
N	95°	141°	208°	236°
A	113°	156°	182°	292°
B	90°	145°	195°	252°

FINISH (SHELL AND NUT)	KEYING ORIENTATION SEE DETAIL	INSERT ORIENTATION	ASSEMBLY PART NUMBER
BLACK ZINC	B	45°	2-2379812-4
BLACK ZINC	B	-	2-2379812-3
BLACK ZINC	A	45°	2-2379812-2
BLACK ZINC	A	-	2-2379812-1
BLACK ZINC	N	45°	1-2379812-0
BLACK ZINC	N	-	1-2379812-9
NICKEL PTFE	B	45°	1-2379812-8
NICKEL PTFE	B	-	1-2379812-7
NICKEL PTFE	A	45°	1-2379812-6
NICKEL PTFE	A	-	1-2379812-5
NICKEL PTFE	N	45°	1-2379812-4
NICKEL PTFE	N	-	1-2379812-3
NICKEL	B	45°	1-2379812-2
NICKEL	B	-	1-2379812-1
OLIVE DRAB	B	45°	1-2379812-0
OLIVE DRAB	B	-	2379812-9
NICKEL	A	45°	2379812-8
NICKEL	A	-	2379812-7
OLIVE DRAB	A	45°	2379812-6
OLIVE DRAB	A	-	2379812-5
NICKEL	N	45°	2379812-4
NICKEL	N	-	2379812-3
OLIVE DRAB	N	45°	2379812-2
OLIVE DRAB	N	-	2379812-1

RECOMMENDED PANEL CUT-OUT △

KEYING ORIENTATION DETAIL

THIS DRAWING IS A CONTROLLED DOCUMENT. DWN 19NOV2020

CD, FABIAN

TE Connectivity

NAME: KIT, RECEPTACLE CONNECTOR ASSEMBLY FIBER OPTIC, MT, SIZE 15, 4 CAVITY 38999 STYLE, PANEL MOUNT

SIZE: 00779 C=2379812

SCALE: 2:1 SHEET 1 OF 1 REV B