

THIS DRAWING IS UNPUBLISHED. RELEASED FOR PUBLICATION  
 © COPYRIGHT copyright\_dBTe- ALL RIGHTS RESERVED.

REVISIONS				
P	LTR	DESCRIPTION	DATE	APVD
A		RELEASE PER ECO-20-015428	29OCT2020	DFS JB
B		REVISED PER ECR-26-273966	19MAR2026	AP MB

NOTES:

1. MATERIALS:

CAP HOUSING:  
 GENERIC TYPE = 15% GF PBT  
 COLOR = SEE TABLE

CAP TPA:  
 GENERIC TYPE = 15% GF PBT  
 COLOR = BLACK

CAP COVER:  
 GENERIC TYPE = 15% GF PBT  
 COLOR = BLACK

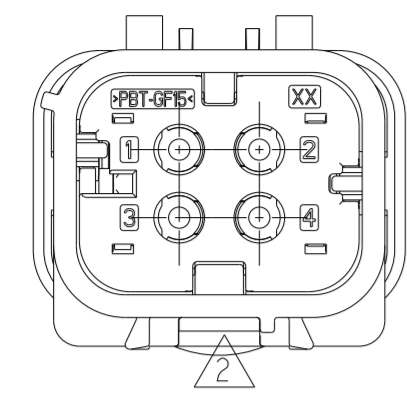
WIRE SEAL:  
 GENERIC TYPE = SILICONE RUBBER  
 COLOR = GREEN

△ NOT TOOLED FOR PRODUCTION.

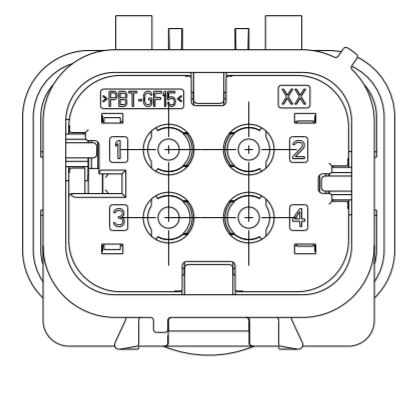
3. TPA SHOWN IN THE PRE-STAGED (AS SHIPPED) POSITION.

4. MATTE SEAL TO ACCOMODATE WIRE INSULATION O.D. RANGE OF 2.18MM TO 3.81MM

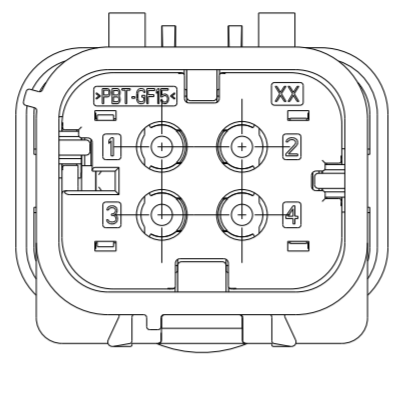
5. REFER TO AS16 COAX PRODUCT GROUP DRAWING: 2381263 FOR INFORMATION REGARDING MATING COMPONENTS, ACCESSORIES, AND APPLICATION TOOLING.



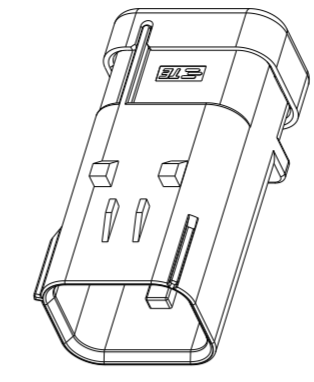
2338211-2  
 SCALE 2:1



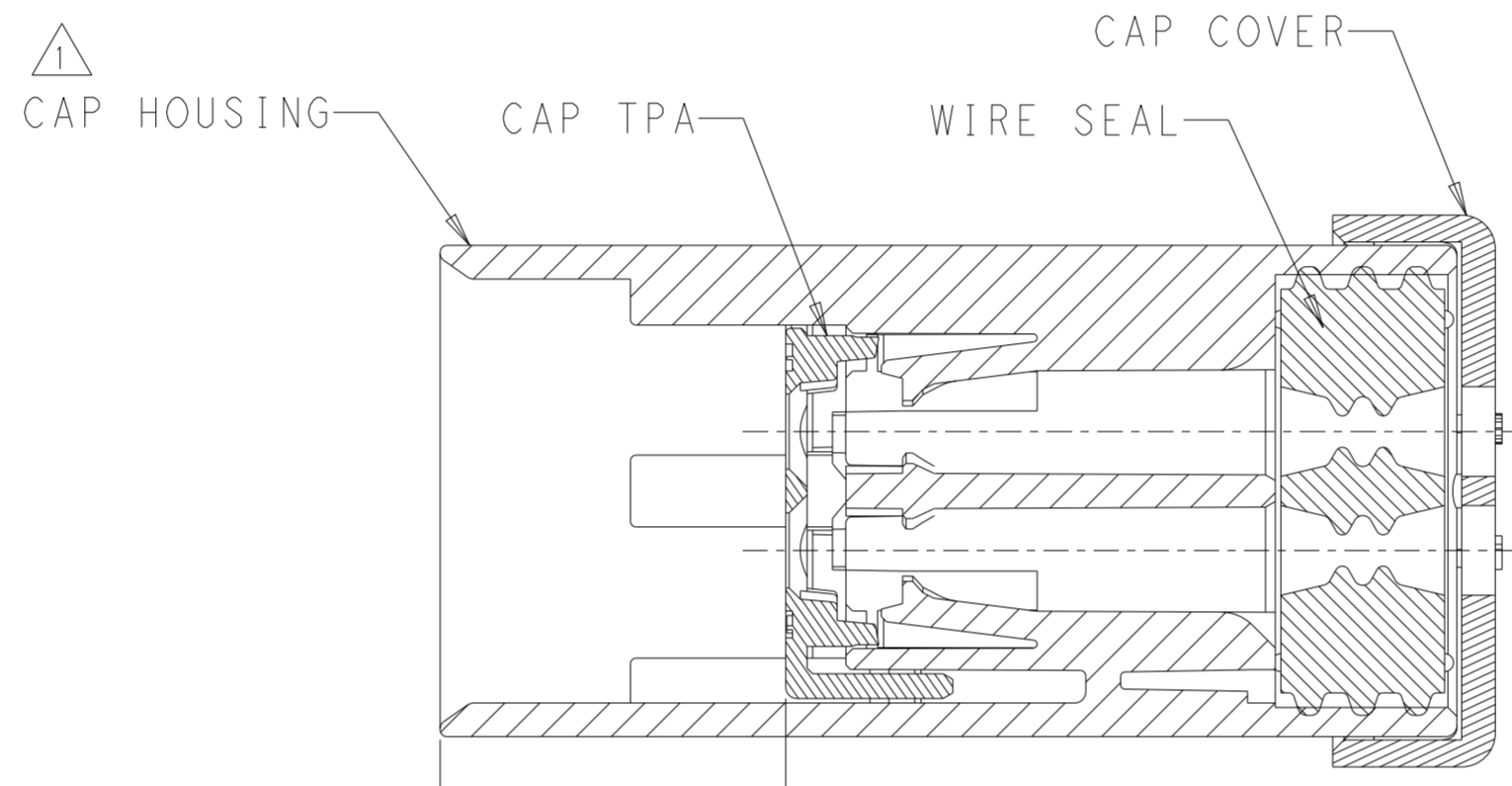
2338211-3  
 SCALE 2:1



2338211-4  
 SCALE 2:1

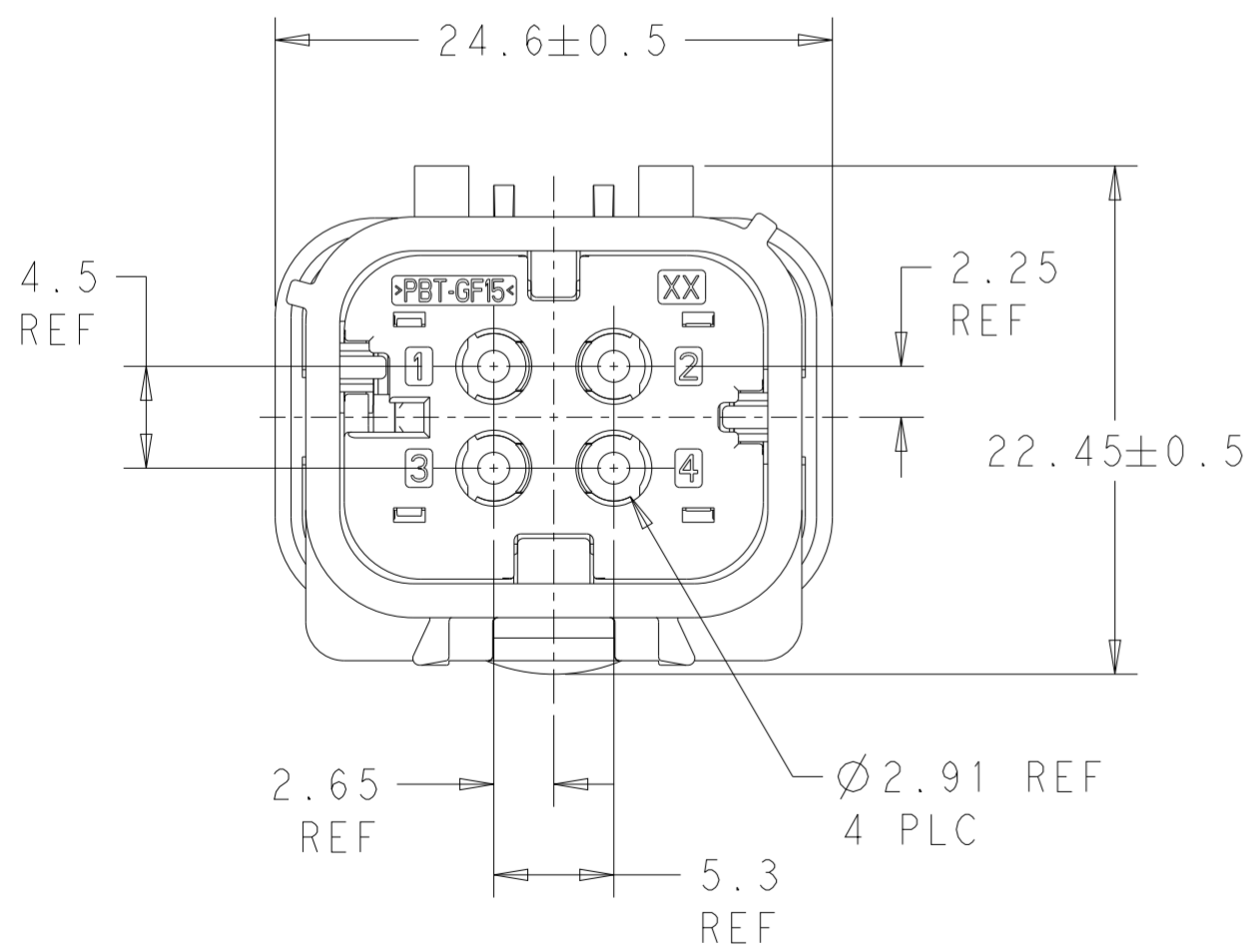


ISOMETRIC VIEW SHOWN FOR REFERENCE ONLY  
 SCALE 1:1

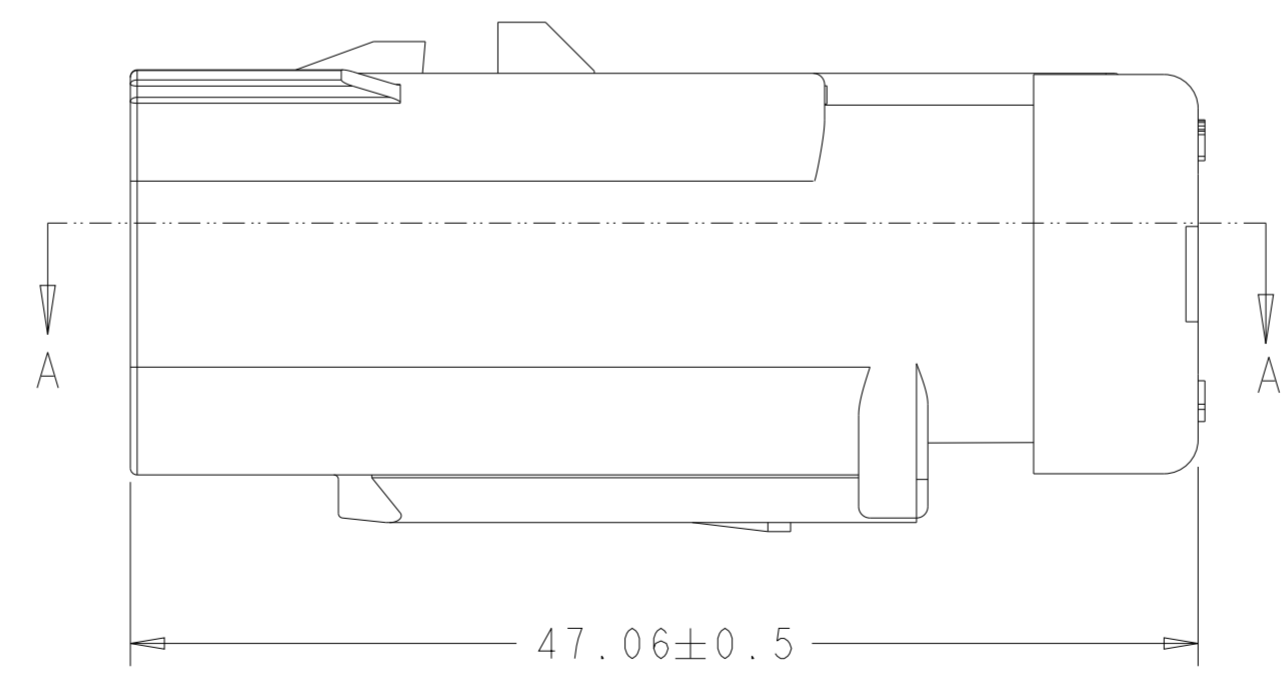


15.417 MAX WITH TPA IN PRE-STAGE POSITION

SECTION A-A



2338211-1 AS SHOWN



BEIGE	2338211-4
SIGNAL BLUE	2338211-3
CLARET VIOLET	2338211-2
WATER BLUE	2338211-1
HOUSING COLOR	PART NUMBER

THIS DRAWING IS A CONTROLLED DOCUMENT.

DWN	Mar-19-26	TE Connectivity	NAME CAP PIN ASSY, 4P, W2W, SEALED COAX AS16 COAX
CHK	14FEB2019		
APVD	29OCT2020		
PRODUCT SPEC	108-94799		
APPLIC. SPEC	114-94667	SIZE	A2
MATERIAL	SEE NOTES	WEIGHT	12.9 g
		CUSTOMER DRAWING	SCALE 3:1
		SHEET 1 OF 1	
		REV B	