



## ANT-W63WS5-ccc

### Hinged Blade WiFi 6/6E Antenna

The Linx ANT-W63WS5 is a dipole, blade-style antenna for WiFi 6/WiFi 6E/WiFi 7 applications in the 2.4 GHz, 5 GHz and 6 GHz bands.

The hinged design allows for the antenna to be positioned for optimum performance. The antenna connects via an SMA plug (male pin) or RP-SMA plug (female socket) connector.

#### FEATURES

- Performance at 2.4 GHz to 2.5 GHz
  - VSWR:  $\leq 1.3$
  - Peak Gain: 8.4 dBi
  - Efficiency: 72%
- Performance at 5.925 GHz to 7.125 GHz
  - VSWR:  $\leq 2.1$
  - Peak Gain: 4.0 dBi
  - Efficiency: 61%
- Hinged design with detents for straight, 45 degree and 90 degree positioning
- SMA plug (male pin) or RP-SMA plug (female socket) connector

#### APPLICATIONS

- WiFi/WLAN coverage
  - WiFi 7 (802.11be)
  - WiFi 6E (802.11ax)
  - WiFi 6 (802.11ax)
  - WiFi 5 (802.11ac)
  - WiFi 4 (802.11n)
  - 802.11b/g
- 2.4 GHz ISM applications
  - Bluetooth®
  - ZigBee®
- U-NII bands 1-8
- Internet of Things (IoT) devices
- Smart Home networking
- Sensing and remote monitoring

#### ORDERING INFORMATION

Part Number	Description
ANT-W63WS5-RPS	WiFi 6/WiFi 6E blade-style antenna with RP-SMA plug (female socket) connector
ANT-W63WS5-SMA	WiFi 6/WiFi 6E blade-style antenna with SMA plug (male pin) connector

Available from Linx Technologies and select distributors and representatives.

**TABLE 1. ELECTRICAL SPECIFICATIONS**

Parameter	ISM/WiFi	WiFi/U-NII 1-3	WiFi 6E/U-NI 4-8
Frequency Range	2400 MHz to 2485 MHz	5150 MHz to 5850 MHz	5925 MHz to 7125 MHz
VSWR (max.)	1.3	2.0	2.1
Peak Gain (dBi)	8.4	4.9	4.0
Average Gain (dBi)	-1.7	-2.1	-2.6
Efficiency (%)	72	65	61
Impedance	50 Ω		
Wavelength	1/2-wave		
Electrical Type	Dipole		
Radiation	Omnidirectional		
Polarization	Linear		
Max Power	10 W		

Electrical specifications and plots measured with the antenna in a straight orientation.

**TABLE 2. MECHANICAL SPECIFICATIONS**

Parameter	Value
Connection	SMA plug (male pin) or RP-SMA plug (female socket)
Antenna Color	Black
Operating Temp. Range	-40 °C to +85 °C
Weight	16.7 g (0.59 oz)
Dimensions	135.6 mm x 24.1 mm x 11.0 mm (5.34 in x 0.95 in x 0.43 in)

## PRODUCT DIMENSIONS

Figure 1 provides dimensions of the ANT-W63WS5-ccc antenna. The antenna whip can be tilted 90 degrees, with a detent at 45 degrees enabling the antenna to be oriented in any direction. The rotating base allows for continuous positioning through 360 degrees even while installed.

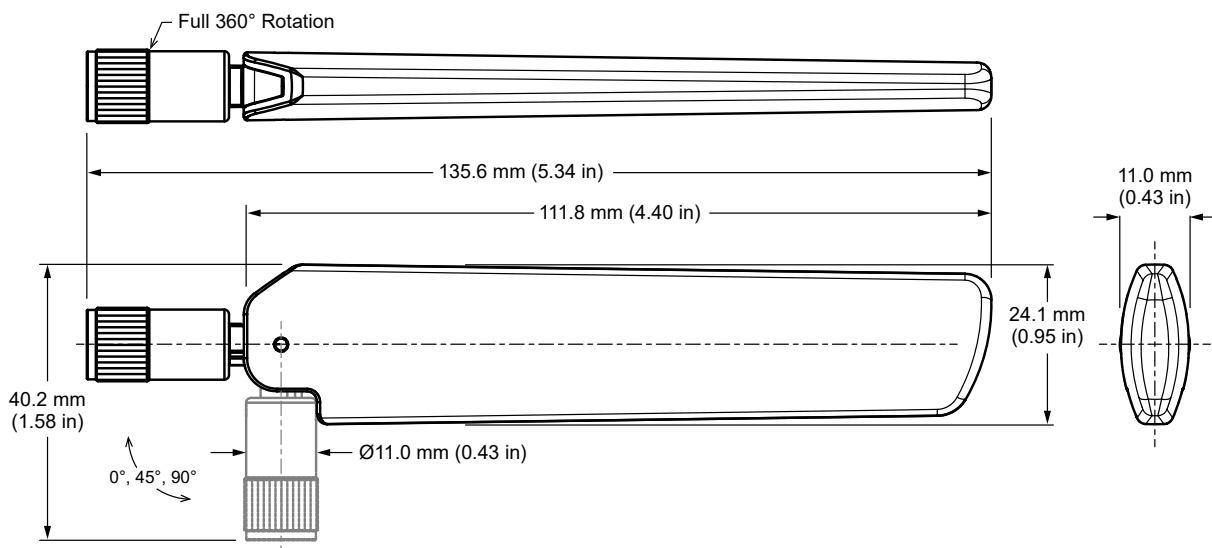


Figure 1: ANT-W63WS5-ccc Antenna Dimensions

---

## PACKAGING INFORMATION

The ANT-W63WS5-ccc antenna is individually placed in a clear polyethylene bag. Plastic bags are sealed in a larger polyethylene bag in quantities of 50 pcs. Bags are placed in cartons of 400 pcs. Distribution channels may offer alternative packaging options.

## ANTENNA MOUNTING

The ANT-W63WS5-ccc antenna is characterized in two antenna orientations as shown in Figure 2. The antenna straight orientation characterizes use of an antenna attached to an enclosure-mounted connector which is connected by cable to a printed circuit board. Although the antenna is a dipole not requiring a ground plane for function, characterization with an adjacent ground plane (102 mm x 102 mm) provides insight into antenna performance when attached directly to a printed circuit board mounted connector. The two orientations represent the most common end-product use cases.

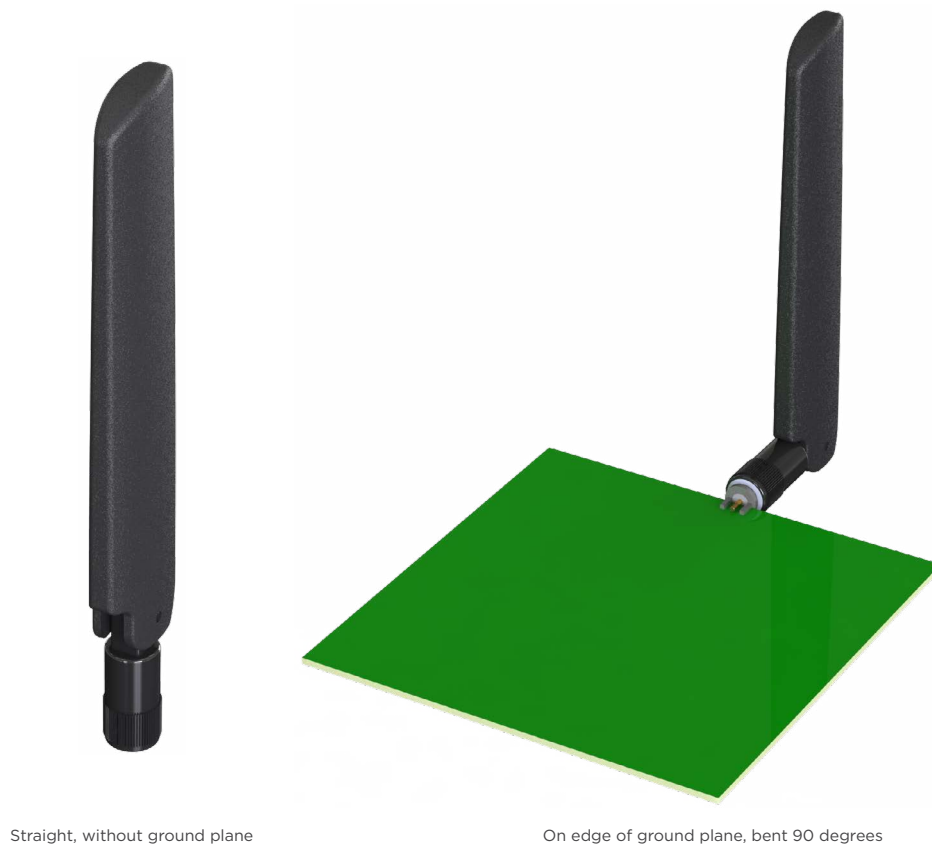


Figure 2: ANT-W63WS5-ccc Test Orientation

## STRAIGHT, NO GROUND PLANE

The charts on the following pages represent data taken with the antenna oriented straight, as shown in Figure 3.



Figure 3: ANT-W63WS5-ccc Straight, No Ground Plane (Straight)

## VSWR

Figure 4 provides the voltage standing wave ratio (VSWR) across the antenna bandwidth. VSWR describes the power reflected from the antenna back to the radio. A lower VSWR value indicates better antenna performance at a given frequency. Reflected power is also shown on the right-side vertical axis as a gauge of the percentage of transmitter power reflected back from the antenna.

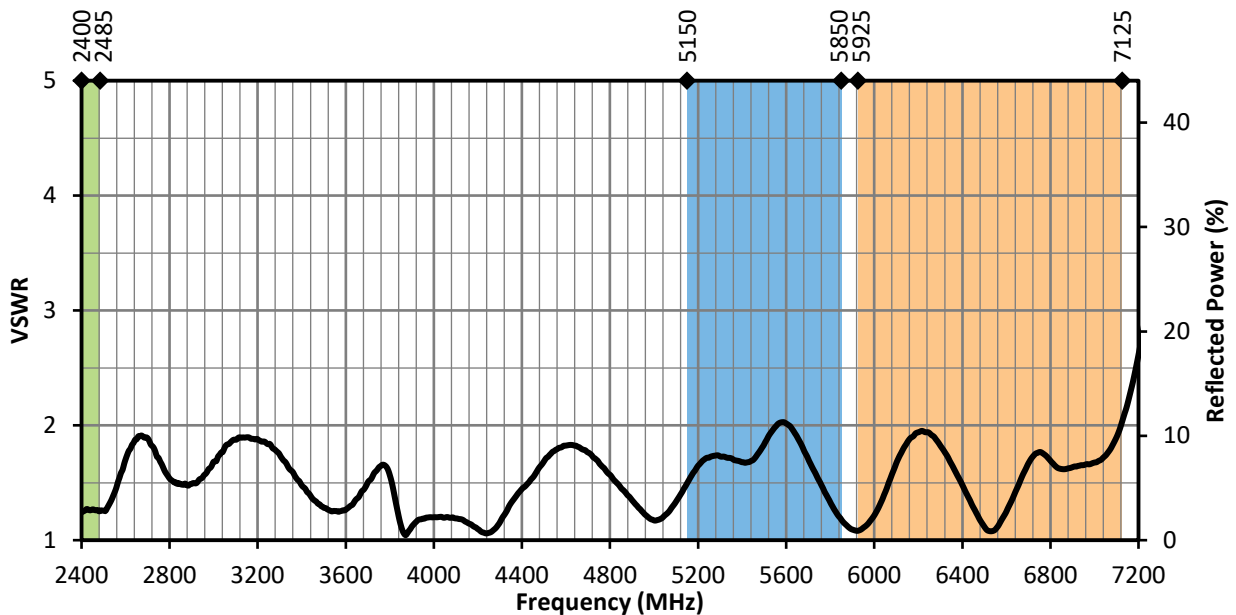


Figure 4: ANT-W63WS5-ccc VSWR, Straight

## RETURN LOSS

Average gain (Figure 6), is the average of all antenna gain in 3-dimensional space at each frequency, providing an indication of overall performance without expressing antenna directionality.

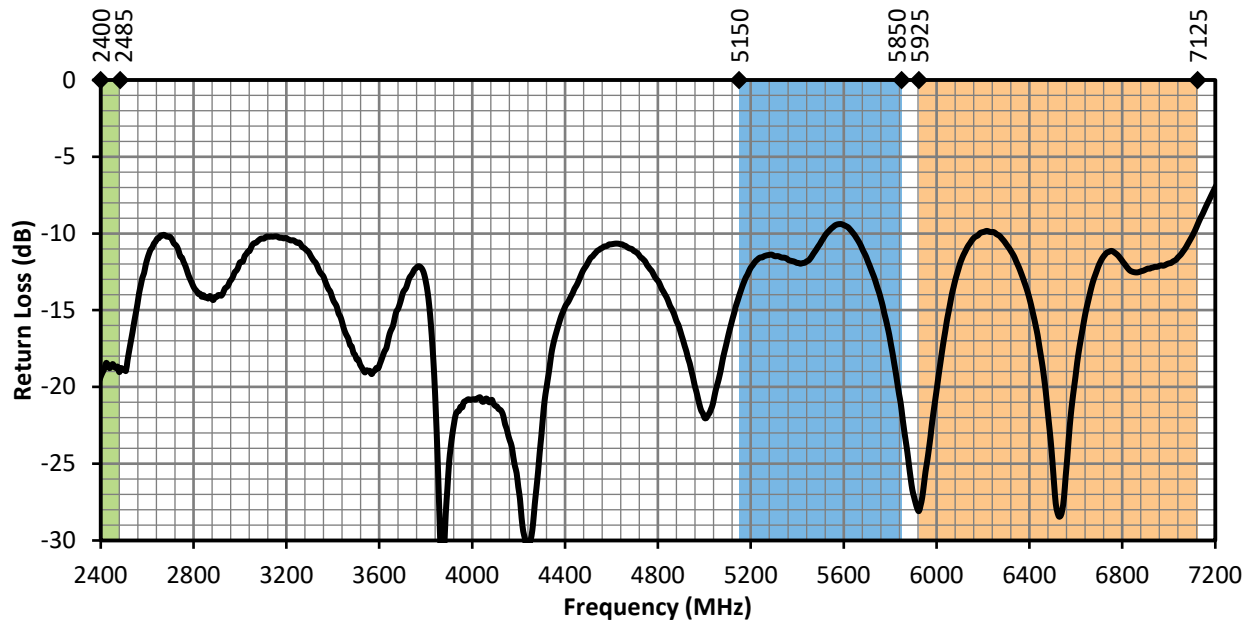


Figure 5: ANT-W63WS5-ccc Return Loss, Straight

## PEAK GAIN

The peak gain across the antenna bandwidth is shown in Figure 6. Peak gain represents the maximum antenna input power concentration across 3-dimensional space, and therefore peak performance at a given frequency, but does not consider any directionality in the gain pattern.

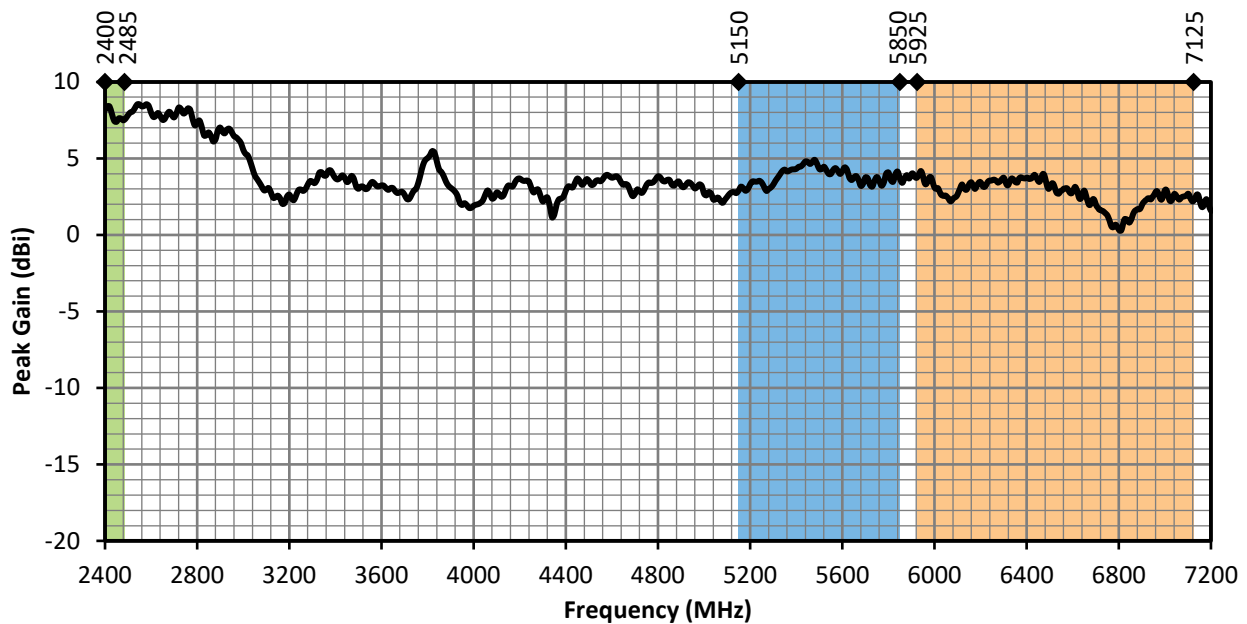


Figure 6: ANT-W63WS5-ccc Peak Gain, Straight

## AVERAGE GAIN

Average gain (Figure 7), is the average of all antenna gain in 3-dimensional space at each frequency, providing an indication of overall performance without expressing antenna directionality.

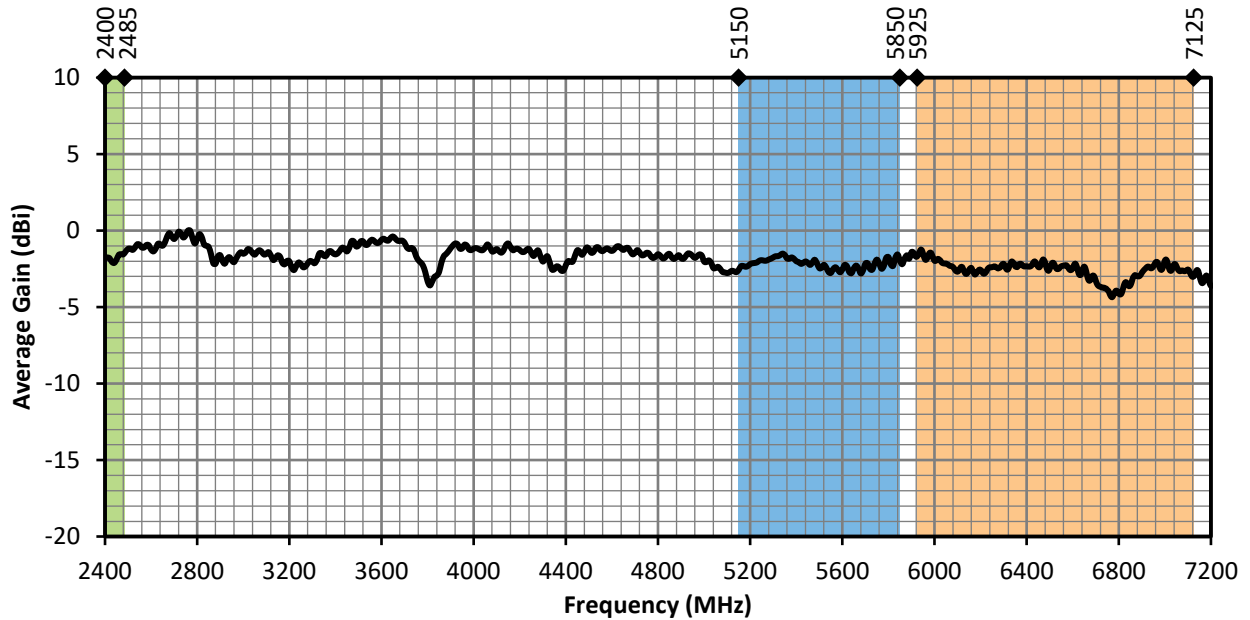


Figure 7: ANT-W63WS5-ccc Antenna Average Gain, Straight

## RADIATION EFFICIENCY

Radiation efficiency (Figure 8), shows the ratio of power delivered to the antenna relative to the power radiated at the antenna, expressed as a percentage, where a higher percentage indicates better performance at a given frequency.

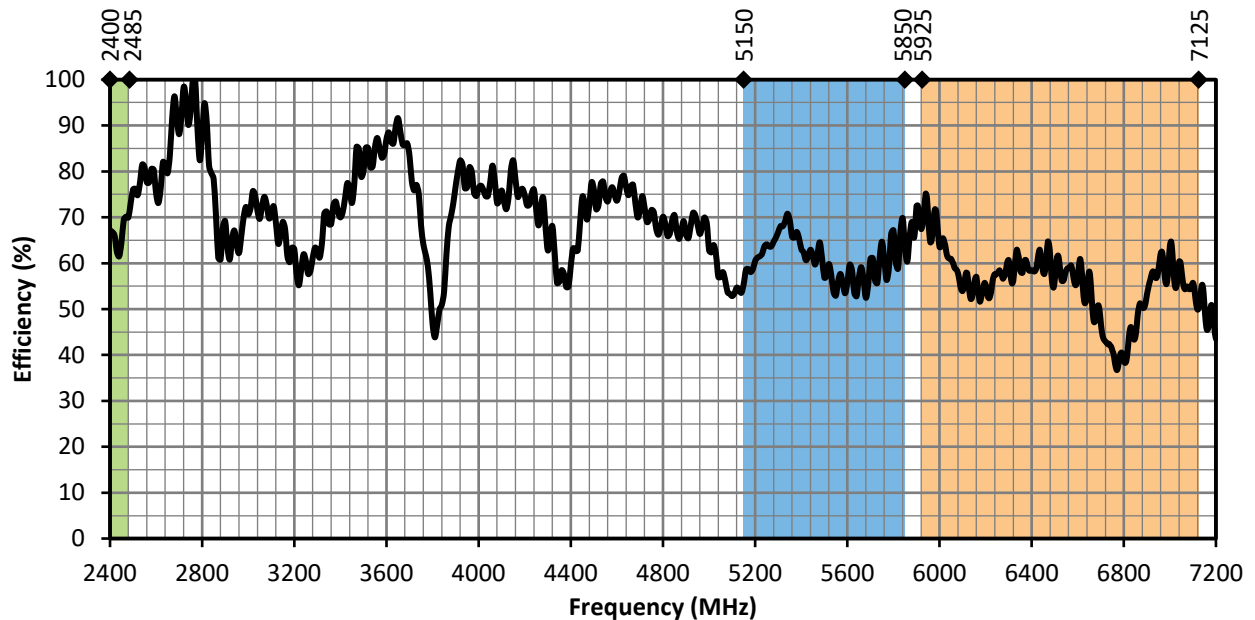


Figure 8: ANT-W63WS5-ccc Antenna Efficiency, Straight

## RADIATION PATTERNS

Radiation patterns provide information about the directionality and 3-dimensional gain performance of the antenna by plotting gain at specific frequencies in three orthogonal planes. Antenna radiation patterns for a straight orientation are shown in Figure 9 using polar plots covering 360 degrees. The antenna graphic at the top of the page provides reference to the plane of the column of plots below it. Note: when viewed with typical PDF viewing software, zooming into radiation patterns is possible to reveal fine detail.

### RADIATION PATTERNS - STRAIGHT



XZ-Plane Gain

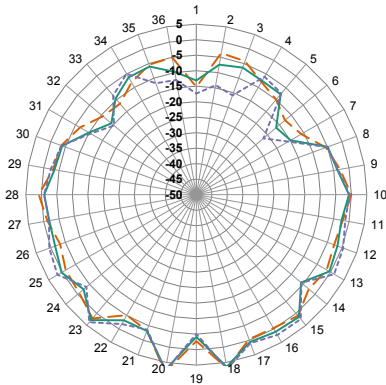


YZ-Plane Gain

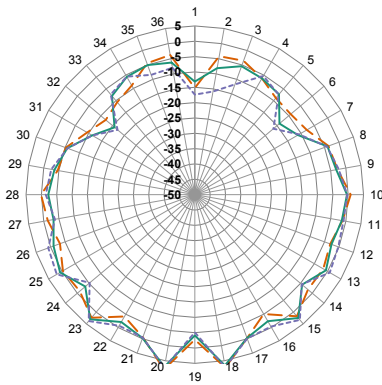


XY-Plane Gain

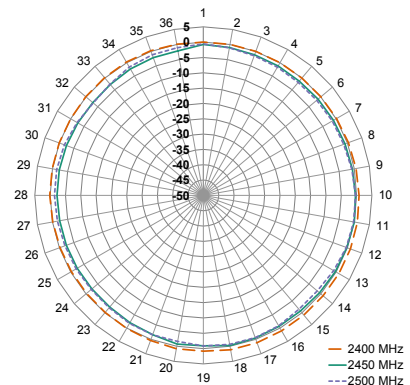
### 2400 MHZ TO 2485 MHZ (2450 MHZ)



XZ-Plane Gain

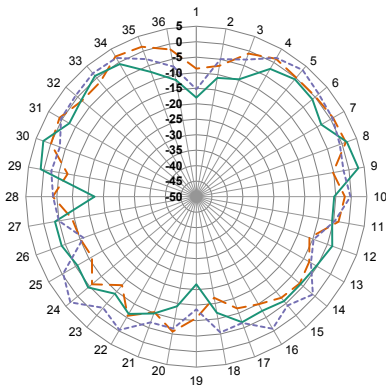


YZ-Plane Gain

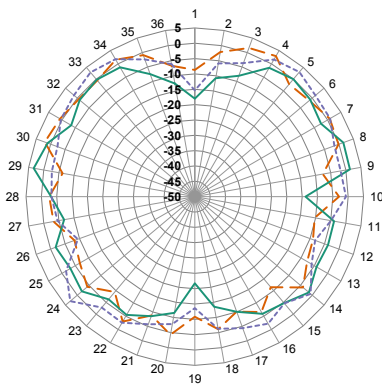


XY-Plane Gain

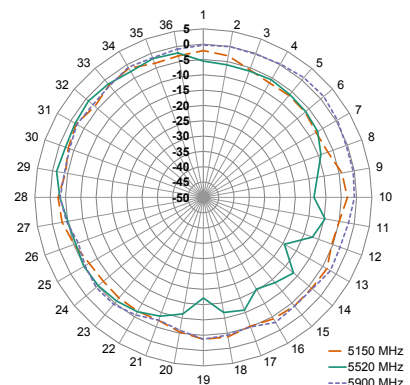
### 5150 MHZ TO 5850 MHZ (5500 MHZ)



XZ-Plane Gain



YZ-Plane Gain



XY-Plane Gain

## RADIATION PATTERNS - STRAIGHT

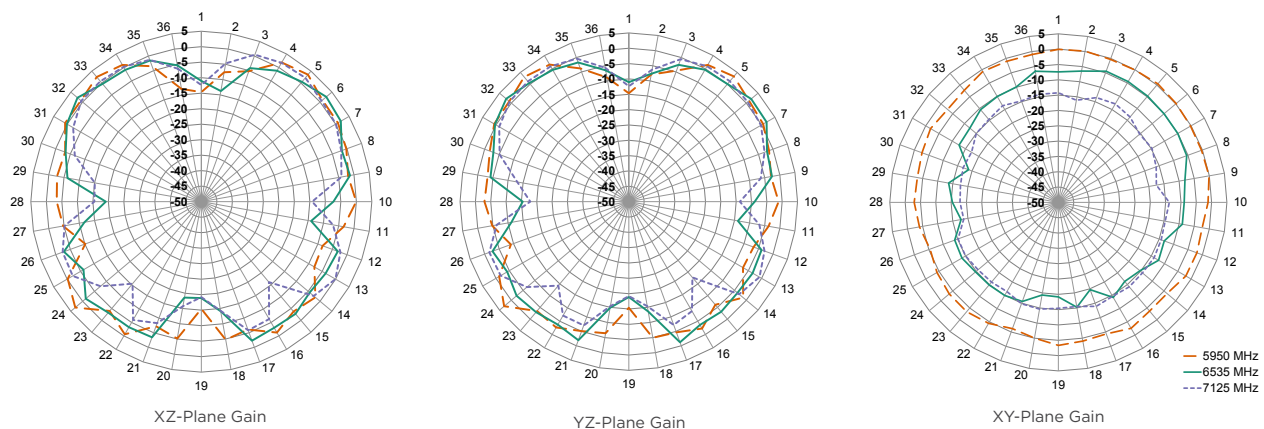


Figure 9: Radiation Patterns for ANT-W63WS5-ccc, Straight

## EDGE OF GROUND PLANE, BENT 90 DEGREES

The charts on the following pages represent data taken with the antenna oriented at the edge of the ground plane, bent 90 degrees (Edge-Bent), as shown in Figure 10.



Figure 10: ANT-W63WS5-ccc on Edge of Ground Plane, Bent 90 Degrees (Edge-Bent)

## EDGE OF GROUND PLANE, BENT 90 DEGREES

Figure 11 provides the voltage standing wave ratio (VSWR) across the antenna bandwidth. VSWR describes the power reflected from the antenna back to the radio. A lower VSWR value indicates better antenna performance at a given frequency. Reflected power is also shown on the right-side vertical axis as a gauge of the percentage of transmitter power reflected back from the antenna.

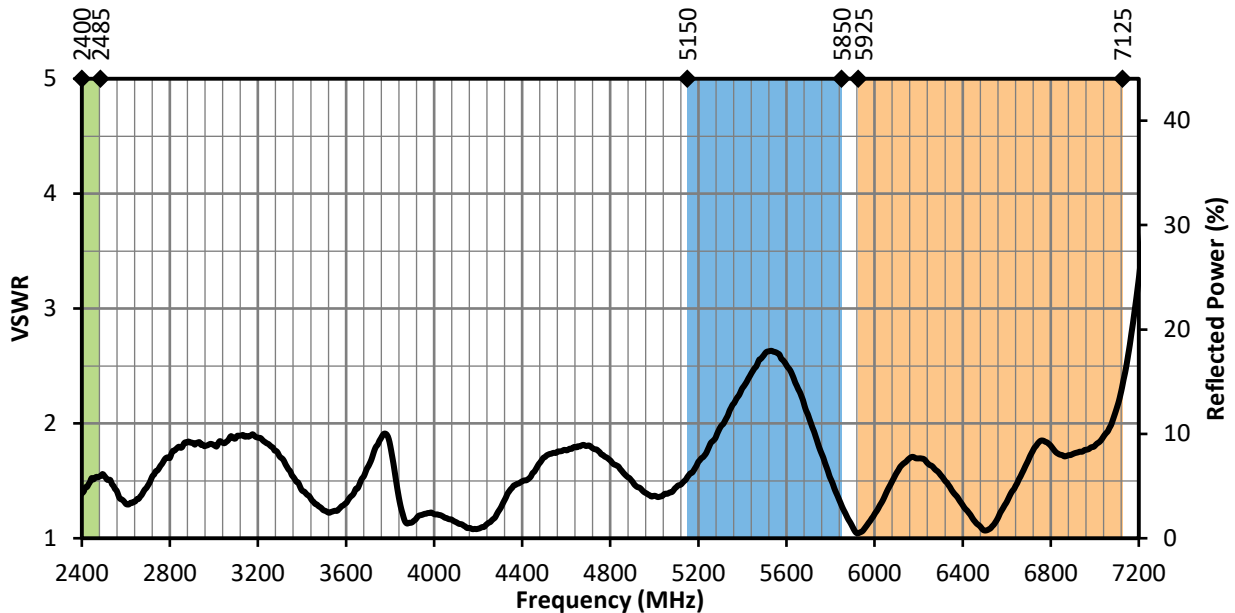


Figure 11: ANT-W63WS5-ccc VSWR, Edge-Bent

## RETURN LOSS

Return loss (Figure 12), represents the loss in power at the antenna due to reflected signals. Like VSWR, a lower return loss value indicates better antenna performance at a given frequency.

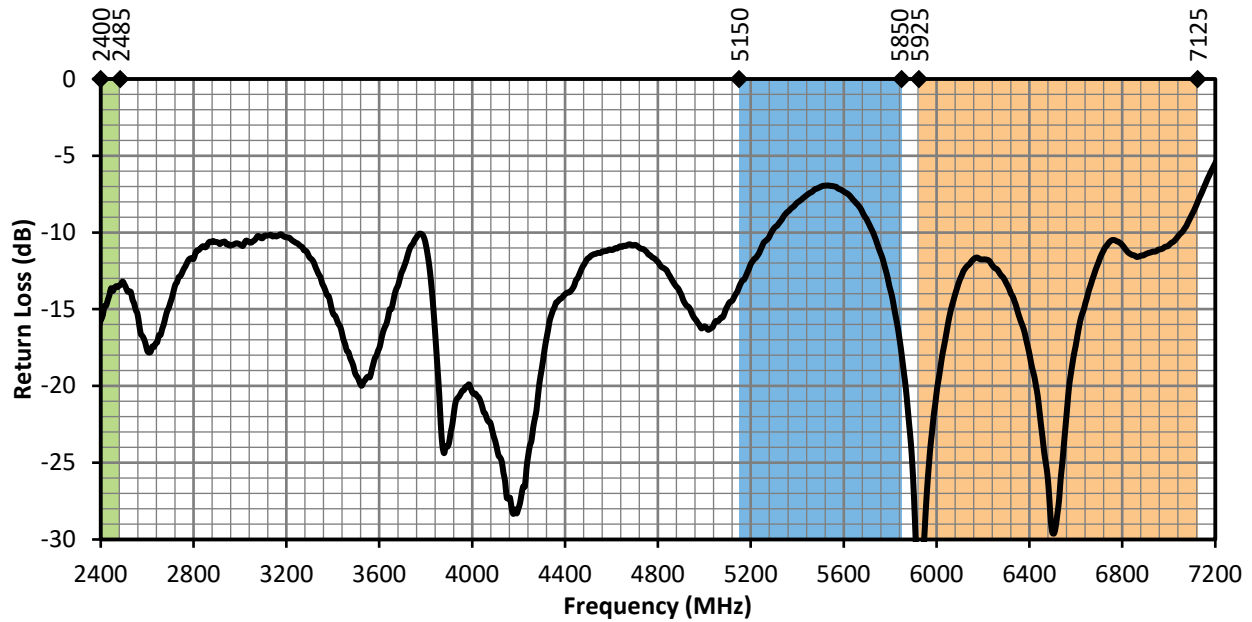


Figure 12: ANT-W63WS5-ccc Return Loss, Edge-Bent

## PEAK GAIN

The peak gain across the antenna bandwidth is shown in Figure 13. Peak gain represents the maximum antenna input power concentration across 3-dimensional space, and therefore peak performance at a given frequency, but does not consider any directionality in the gain pattern.

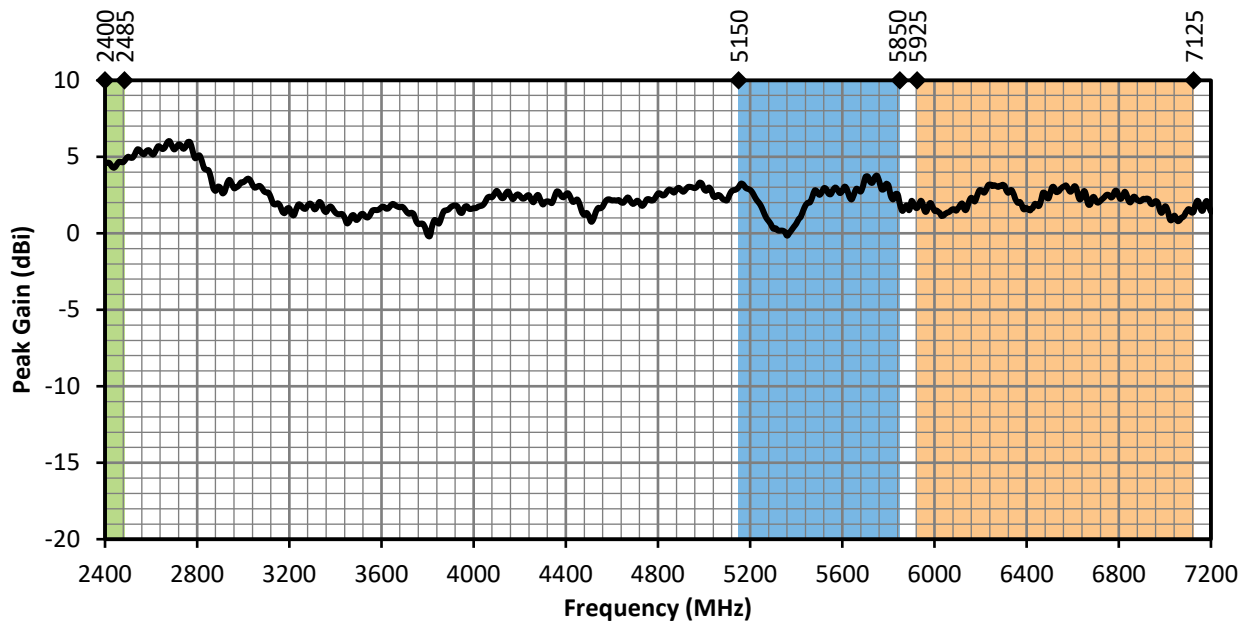


Figure 13: ANT-W63WS5-ccc Peak Gain, Edge-Bent

## AVERAGE GAIN

Average gain (Figure 14), is the average of all antenna gain in 3-dimensional space at each frequency, providing an indication of overall performance without expressing antenna directionality.

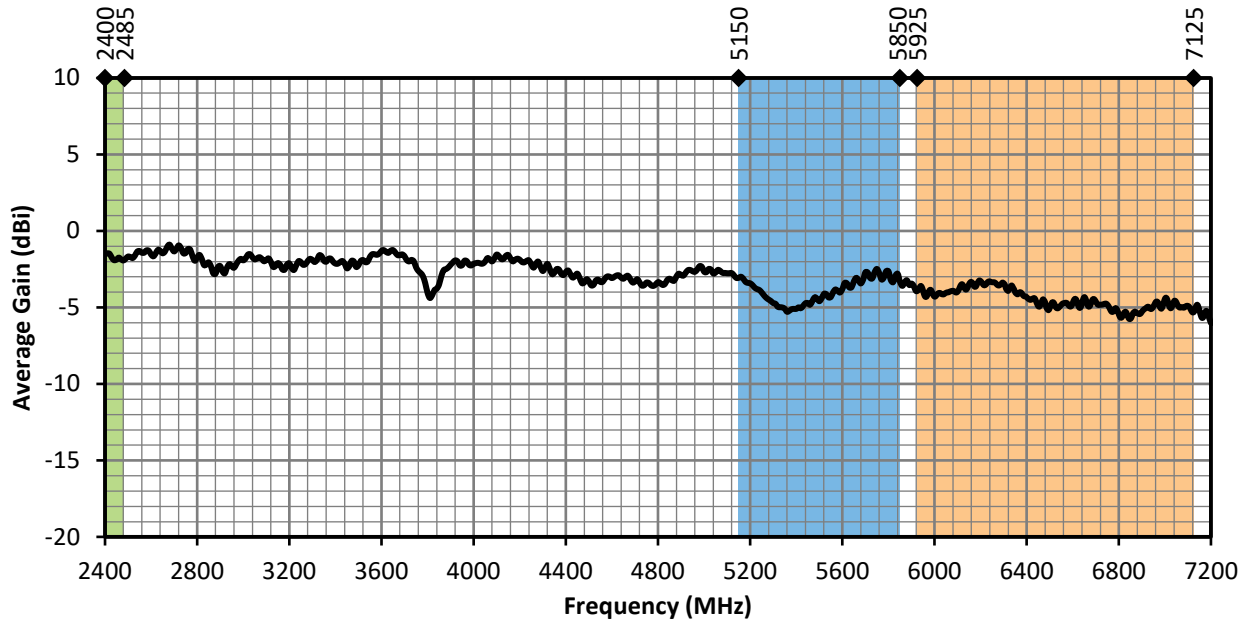


Figure 14: ANT-W63WS5-ccc Antenna Average Gain, Edge-Bent

## RADIATION EFFICIENCY

Radiation efficiency (Figure 15), shows the ratio of power delivered to the antenna relative to the power radiated at the antenna, expressed as a percentage, where a higher percentage indicates better performance at a given frequency.

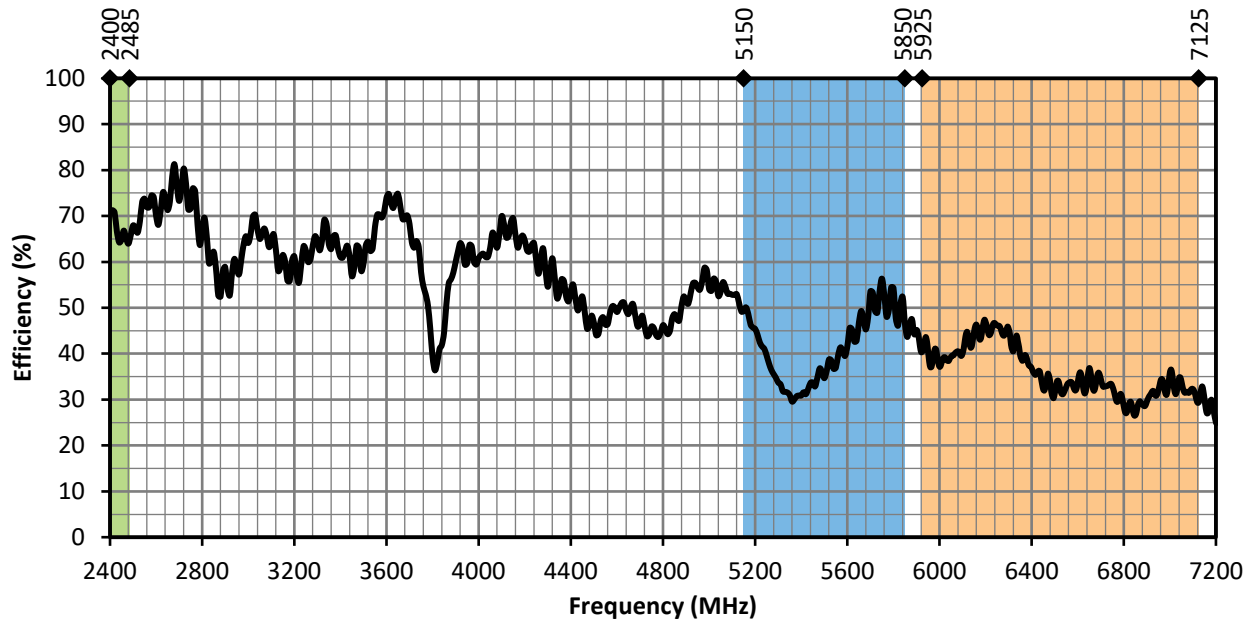


Figure 15: ANT-W63WS5-ccc Antenna Efficiency, Edge-Bent

## RADIATION PATTERNS

Radiation patterns provide information about the directionality and 3-dimensional gain performance of the antenna by plotting gain at specific frequencies in three orthogonal planes. Antenna radiation patterns for a straight orientation are shown in Figure 9 using polar plots covering 360 degrees. The antenna graphic at the top of the page provides reference to the plane of the column of plots below it. Note: when viewed with typical PDF viewing software, zooming into radiation patterns is possible to reveal fine detail.

### RADIATION PATTERNS - STRAIGHT



XZ-Plane Gain

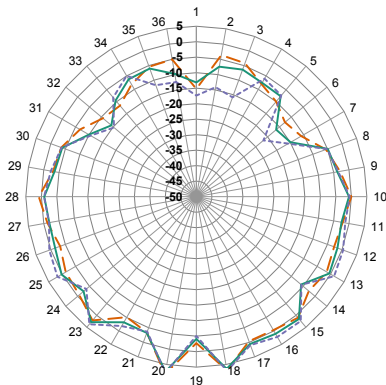


YZ-Plane Gain

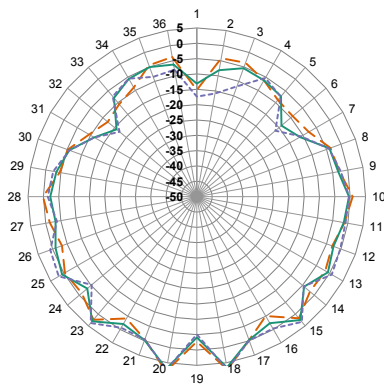


XY-Plane Gain

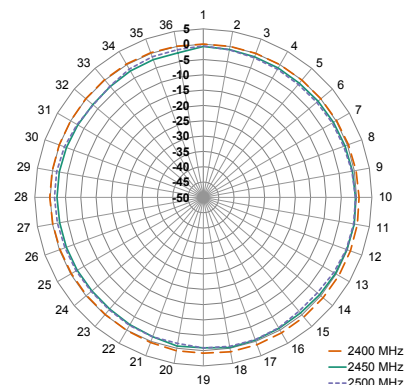
### 2400 MHZ TO 2485 MHZ (2450 MHZ)



XZ-Plane Gain

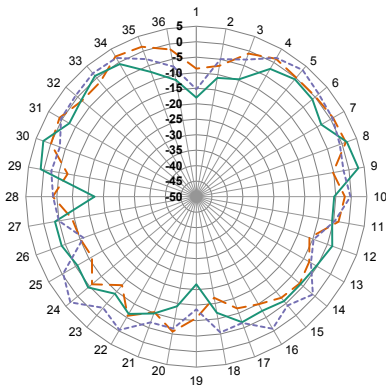


YZ-Plane Gain

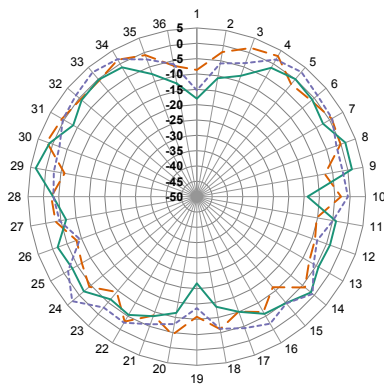


XY-Plane Gain

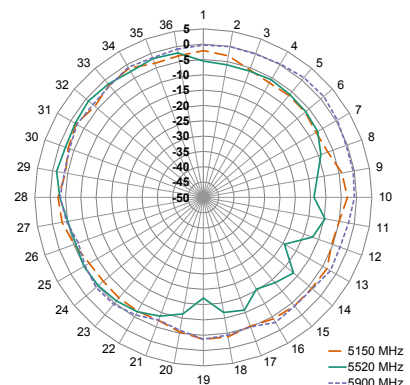
### 5150 MHZ TO 5850 MHZ (5500 MHZ)



XZ-Plane Gain



YZ-Plane Gain



XY-Plane Gain

## 5925 MHZ TO 7125 MHZ (6500 MHZ)

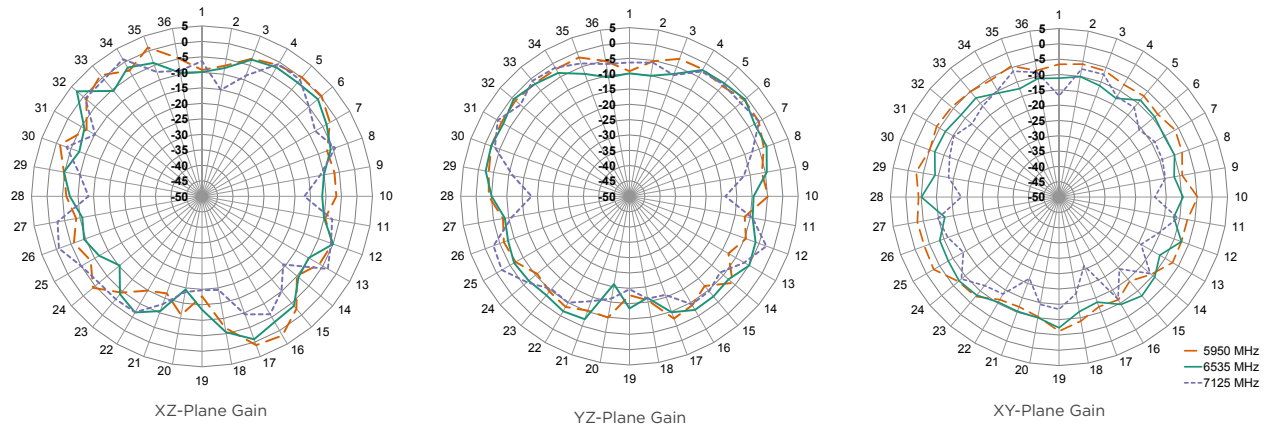


Figure 16: Radiation Patterns for ANT-W63WS5-ccc, Edge-Bent

### TE TECHNICAL SUPPORT CENTER

USA:	+1 (800) 522-6752
Canada:	+1 (905) 475-6222
Mexico:	+52 (0) 55-1106-0800
Latin/S. America:	+54 (0) 11-4733-2200
Germany:	+49 (0) 6251-133-1999
UK:	+44 (0) 800-267666
France:	+33 (0) 1-3420-8686
Netherlands:	+31 (0) 73-6246-999
China:	+86 (0) 400-820-6015

### te.com

TE Connectivity, TE, TE connectivity (logo), Linx and Linx Technologies are trademarks owned or licensed by the TE Connectivity Ltd. family of companies. All other logos, products and/or company names referred to herein might be trademarks of their respective owners.

The information given herein, including drawings, illustrations and schematics which are intended for illustration purposes only, is believed to be reliable. However, TE Connectivity makes no warranties as to its accuracy or completeness and disclaims any liability in connection with its use. TE Connectivity's obligations shall only be as set forth in TE Connectivity's Standard Terms and Conditions of Sale for this product and in no case will TE Connectivity be liable for any incidental, indirect or consequential damages arising out of the sale, resale, use or misuse of the product. Users of TE Connectivity products should make their own evaluation to determine the suitability of each such product for the specific application.

TE Connectivity warrants to the original end user customer of its products that its products are free from defects in material and workmanship. Subject to conditions and limitations TE Connectivity will, at its option, either repair or replace any part of its products that prove defective because of improper workmanship or materials. This limited warranty is in force for the useful lifetime of the original end product into which the TE Connectivity product is installed. Useful lifetime of the original end product may vary but is not warranted to exceed one (1) year from the original date of the end product purchase.

©2023 TE Connectivity. All Rights Reserved.

11/23 Original