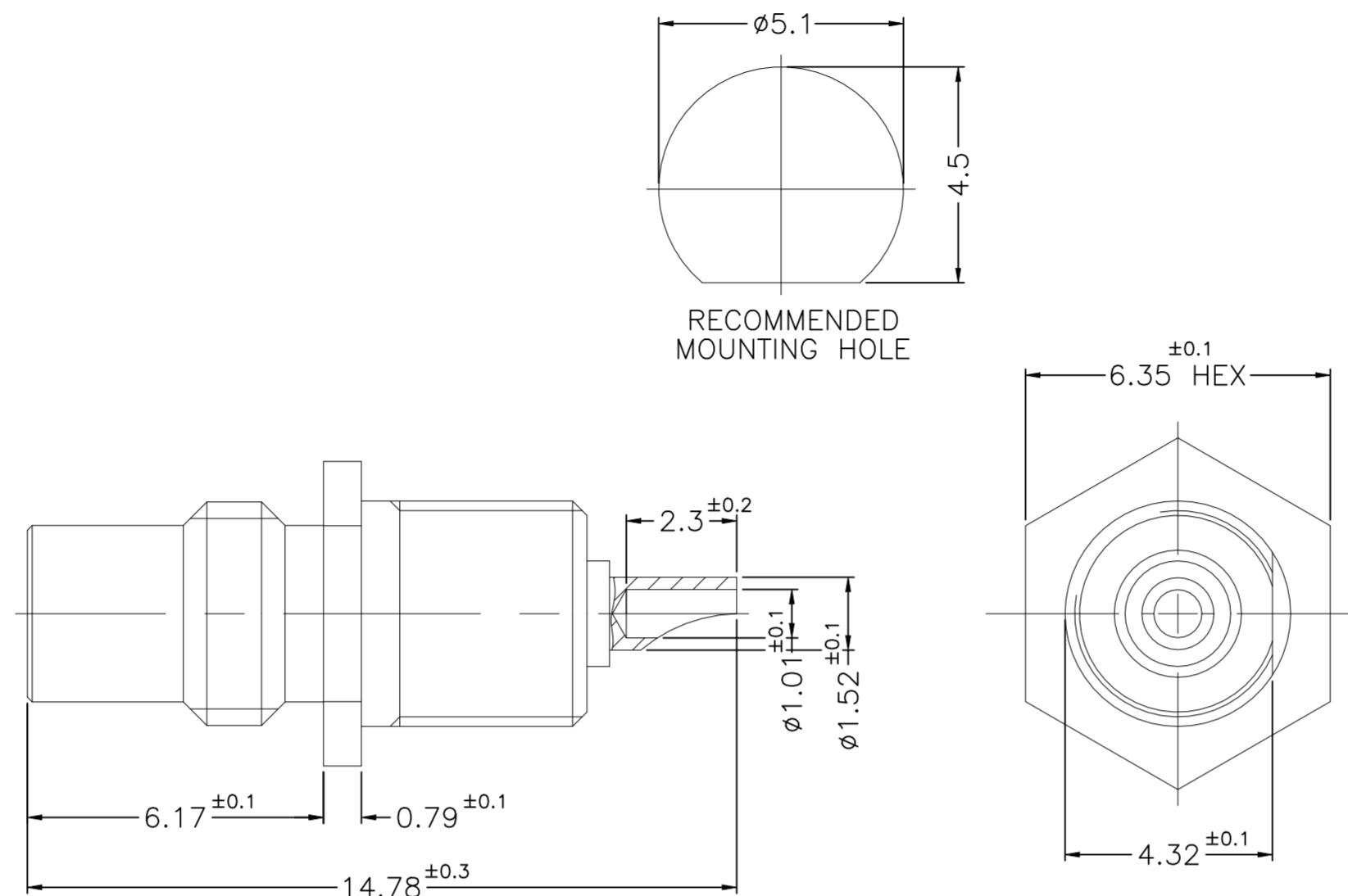


REVISIONS					
P	LTR	DESCRIPTION	DATE	DWN	APVD
A		ECN-24-261719 (GTP)	19AR2024	SS	WH



SPECIFICATIONS:

1. IMPEDANCE: 50Ω
2. FREQUENCY RANGE: (DC-6 GHz), (6-10GHz)
3. VSWR/RL: 1.2(DC-6GHz)/20.83dB min, 1.3(6-10GHz)/ 17.7dB min.
4. CONTACT RESISTANCE:
CENTER: 6 milliohms max.
OUTER: 2.5 milliohms max.
5. TEMPERATURE RANGE: -65°C TO +165°C
6. DURABILITY: 500 cycles min.
7. ENGAGEMENT AND DISENGAGEMENT FORCE:
ENGAGEMENT: 0.3 N-m. max.
DISENGAGEMENT: 0.3 N-m. max.

FINISH (PLATING THICKNESS IN MICRO-INCHES)

- ▲ GOLD PL. 30 MIN. THICK OVER NICKEL PL. 50 MIN. THICK OVER COPPER PL. 50 MIN. THICK
- ▲ GOLD PL. 50 MIN. THICK OVER NICKEL PL. 50 MIN. THICK OVER COPPER PL. 50 MIN. THICK

QUANTITY PER ASSY	FINISH	MATERIAL	DESCRIPTION	ITEM
1	2	BRASS	CONTACT PIN	3
1	NATURAL	PTFE	INSULATOR	2
1	1	BRASS	BODY	1
2477166-1	FINISH	MATERIAL	DESCRIPTION	ITEM

THIS DRAWING IS A CONTROLLED DOCUMENT.		DWN 11MAR2024 SIDDHARTH SINGH			
DIMENSIONS: mm		CHK 11MAR2024 ERIC DAI			
TOLERANCES UNLESS OTHERWISE SPECIFIED:		APVD 11MAR2024 WENKE HE	NAME SMC Jack Str Rear BHD Solder Cup 10 Ghz		
0 PLC ± 0.3		PRODUCT SPEC	-		
1 PLC ± 0.2		APPLICATION SPEC	-		
2 PLC ± 0.1		108-161209	SIZE	CAGE CODE	DRAWING NO
3 PLC ± -		-	A2	00779	C=2477166
4 PLC ± -		WEIGHT	RESTRICTED TO		
ANGLES ± 5		-	-		
MATERIAL	FINISH	CUSTOMER DRAWING	SCALE	SHEET	REV
-	-		1:1	1 of 1	A