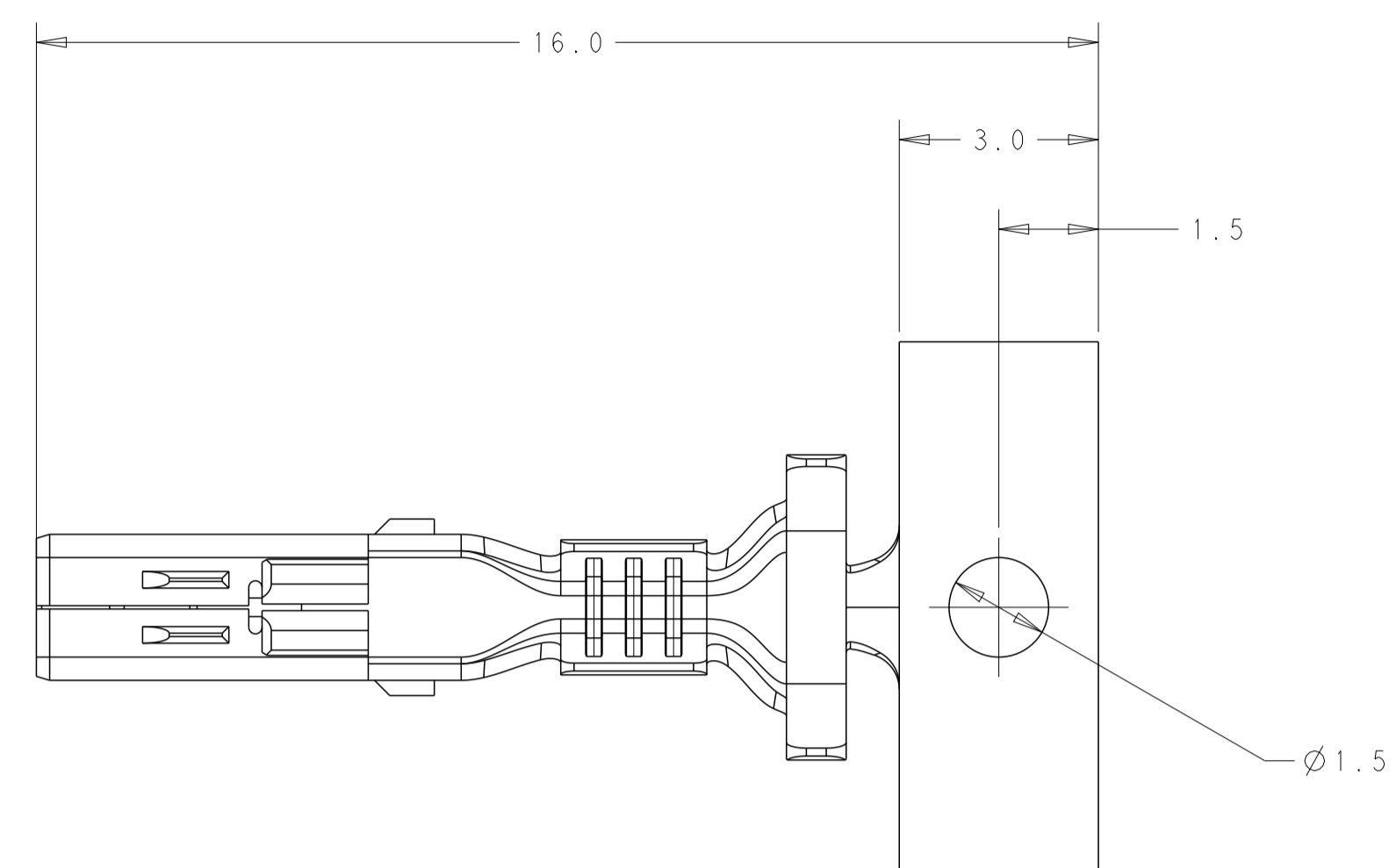
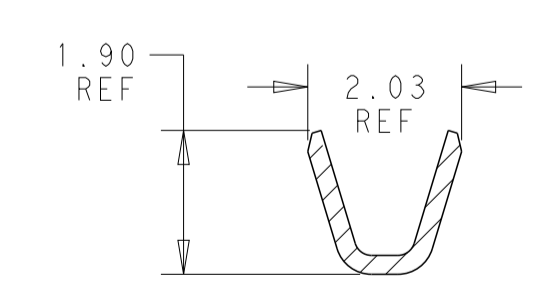
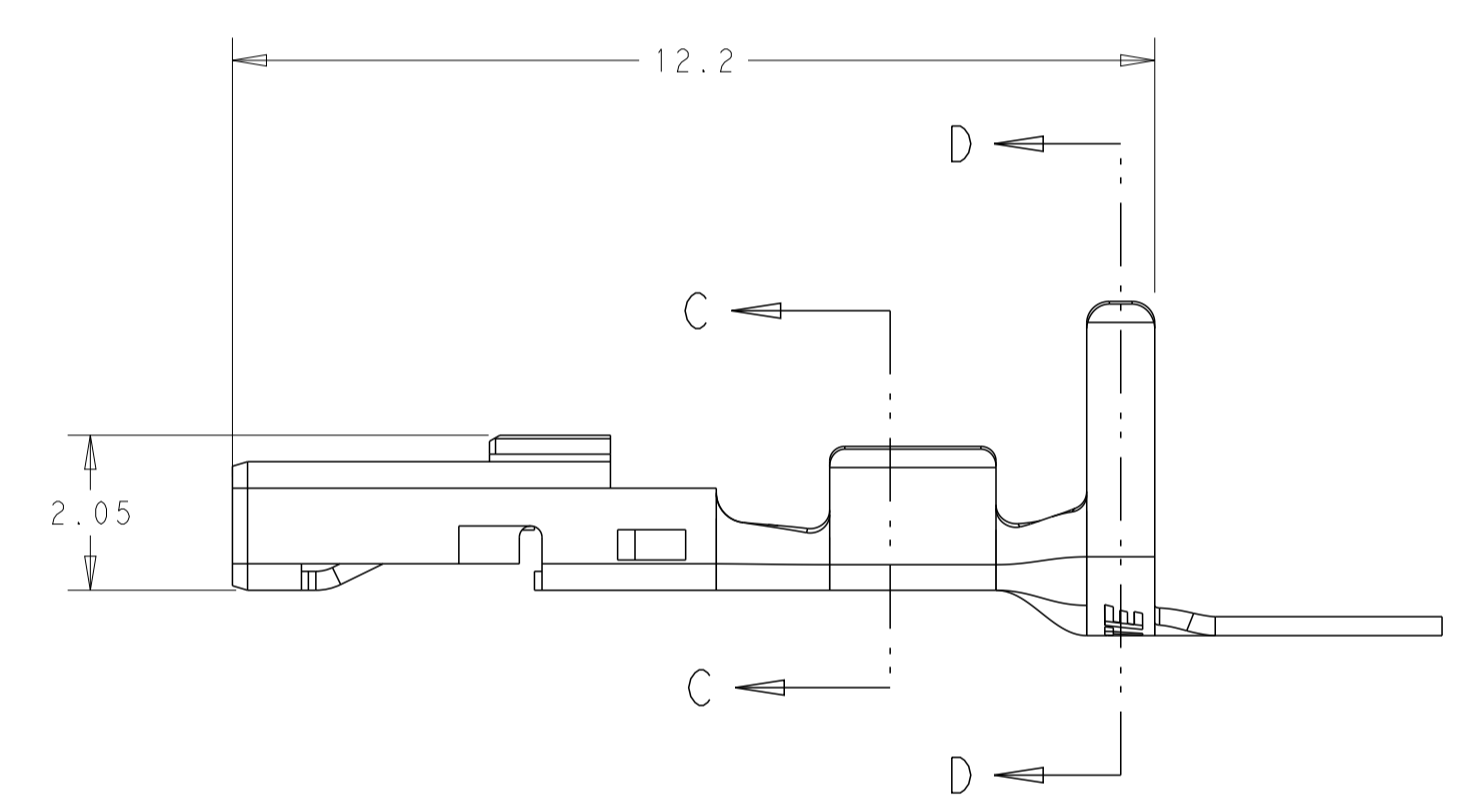
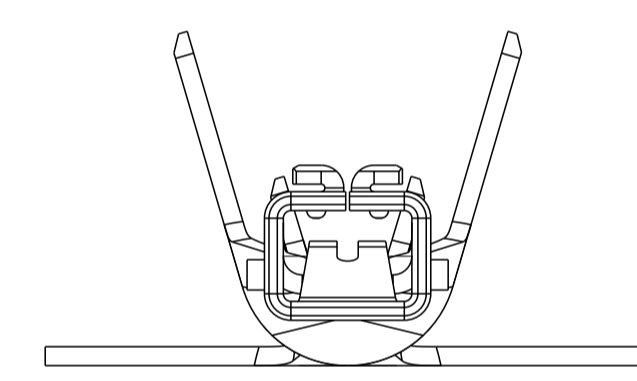


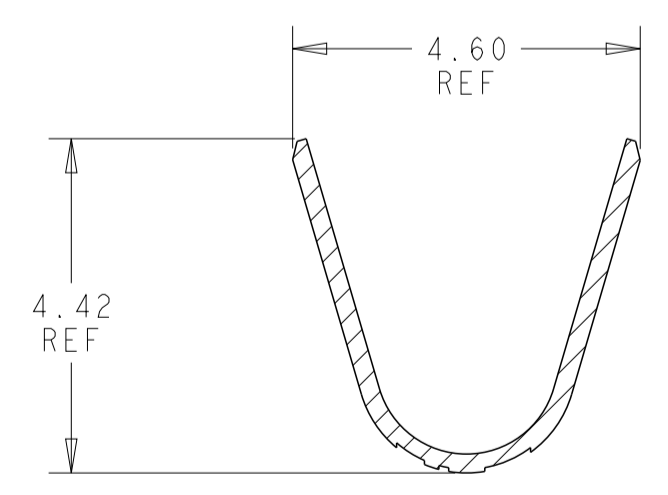
REVISIONS				
P	LTN	DESCRIPTION	DATE	APVD
A		REVISED PER ECN-24-276632	08AUG2024	DK CL



- 1 MATERIAL: SEE TABLE
- 2 RECOMMENDED MATING PART: 2391516-2, 2391516-3, 2391516-4, 1-2391516-2
- 3 PACKAGING: ON REEL
- 4 REFERENCE CRIMP INFORMATION:
WIRE RANGE: 20-24AWG COPPER STRANDED
INSULATION RANGE: 1.4-2.0mm



SECTION C-C
SCALE 10:1



SECTION D-D
SCALE 10:1

TIN PRE-PLATED	COPPER ALLOY, 0.25 THICK	2406090-1
FINISH	MATERIAL	PART NO

THIS DRAWING IS A CONTROLLED DOCUMENT.		OWN: OTTO CHEN 07SEP2022	TE Connectivity	
DIMENSIONS: mm		CHK: DANIEL Z 09SEP2022		
TOLERANCES UNLESS OTHERWISE SPECIFIED:		APVD: DANIEL Z 09SEP2022		
0 PLC	±	NAME: REC TERMINAL 20-24AWG, POWER DOUBLE LOCK	RESTRICTED TO	
2 PLC	±0.40	PRODUCT SPEC: 108-160365	-	
3 PLC	±0.30	APPLICATION SPEC: 114-160773	-	
4 PLC	±	SIZE: A	-	
ANGLES	±	CAGE CODE: -	-	
FINISH	±	DRAWING NO: C=2406090	-	
MATERIAL: SEE TABLE	SEE TABLE	WEIGHT: -	SCALE 10:1 SHEET 1 OF 1 REV A	
CUSTOMER DRAWING				