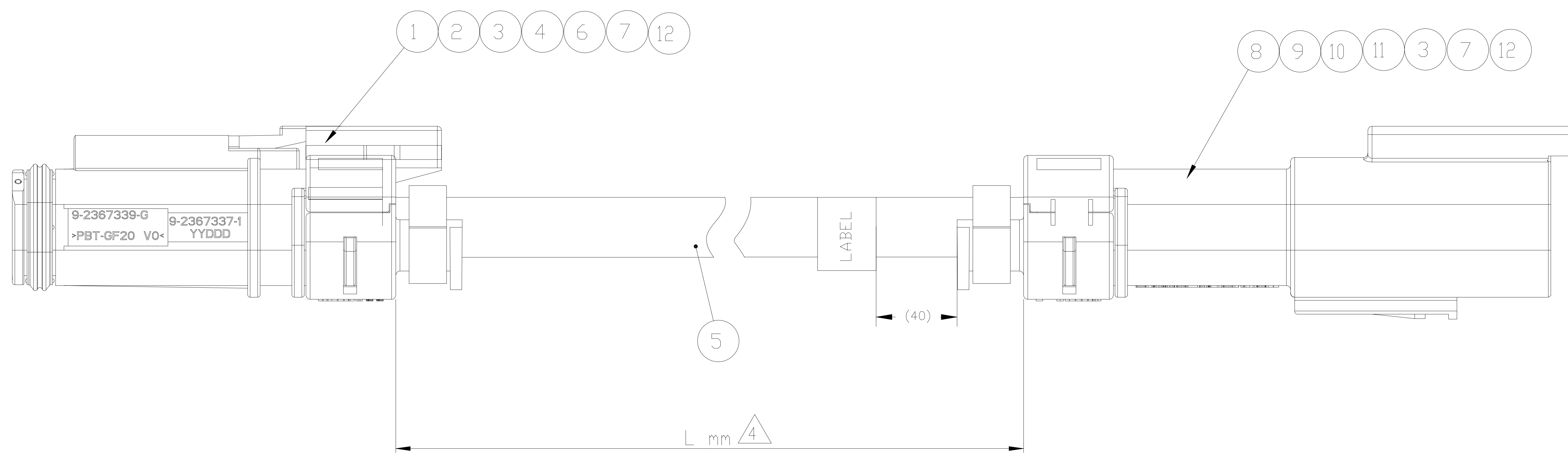


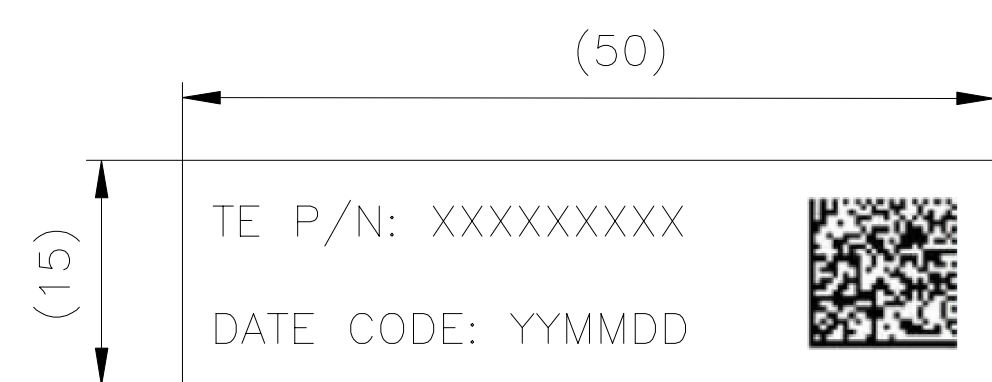
| REVISIONS | | | | | |
|-----------|-----|---------------|-----------|-----|------|
| P | LTR | DESCRIPTION | DATE | DWN | APVD |
| | A | new drawing | 17MAY2021 | KS | JB |
| | A1 | ECR-22-130807 | 09MAR2022 | DRK | GL |
| | B | ECN-25-351769 | 23OCT25 | DHN | K.M |



- NOTE:**
- All connector crimping and assembly shall be made per TE specification 114-151004 THE LATEST VERSION SHALL BE USED UNLESS SPECIFIED OTHERWISE
 - 1.1: TERMINAL CRIMP HEIGHT
 - ⊠ 1.2: FIX ELEMENT CRIMP HEIGHT
 - 1.3: THE POSITION OF THE TERMINAL LOCKING-LANCE DIMENSION (ONLY FOR AUTOMATION MACHINE)
 - ⊠ 1.4: CONNECTORS TO CABLE RETENTION FORCE
 - 100% ONLINE ELECTRICAL TEST ACCORDING TO TE SPECIFICATION 108-18857
 - 2.1: 100% POINT TO POINT CONTINUITY TEST FOR EACH CIRCUIT, NO OPEN, NO SHORT
 - 2.2: HIGH VOLTAGE TEST; NO BREAKDOWN AT 500V AC 100MS, MAX 1.5mA
 - 2.3: INSULATION RESISTANCE TEST: 100MΩ MIN AT 500V DC 100MS
 - 2.4: CONNECTING RESISTANCE: MAX 5 OHM
 - PRODUCT SPECIFICATION: 108-94568,
 - △ LENGTH "L" ACCORDING TABLE.
 - 5. TEMPERATURE RANGE: -40°C TO 105°C
 - △ WIRE POSITION SEE BESIDE TABLE

| WIRE FROM | | WIRE TO | | CABLE TYPE |
|-----------|--------------|---------|--------------|---------------------|
| CONN 1 | CAV 1: Blue | CONN 2 | CAV 1: Blue | 0.50 SQMM CHAMPLAIN |
| | CAV 2: Green | | CAV 2: Green | |

7. LABEL INFORMATION SEE BELOW



BAR CODE: XXXXXXXX~YYMMDDNXXXXX

- SEQUENCE NUMBER: 6 DIGITALS, STARTED FROM 000001
- SHIFT INFORMATION: "D" DAY OR "N": NIGHT
- MANUFACTURE DATE: YY: Last digital of the year; MM: Month; DD: Day
- SEPARATOR
- TE PART NUMBER

△ This cable pinout used as crossover cable in harness. Continuity check should confirm this pinout which deviates from application spec.

CABLE LENGTH SCHEDULE △

| TE PN | REV | LENGTH L(mm) | TOL |
|-----------|-----|--------------|------|
| 2382949-1 | B | 500 | ±10 |
| 2382949-2 | B | 1000 | ±15 |
| 2382949-3 | B | 1500 | ±15 |
| 2382949-4 | B | 3000 | ±25 |
| 2382949-5 | B | 5000 | ±50 |
| 2382949-6 | B | 7500 | ±50 |
| 2382949-7 | B | 10000 | ±100 |

| QTY | U/M | DESCRIPTION | ITEM NO |
|-----------|-----|-------------------------------------|---------|
| 1 | PC | LABLE 15*50 | 13 |
| 2 | PC | Cable Tie | 12 |
| 1 | PC | Data DT Seal Cover | 11 |
| 2 | PC | Deutsch Contact Male Size 20 | 10 |
| 1 | PC | Data DT Pin Terminal System | 9 |
| 1 | PC | Data DT Pin Housing Assy | 8 |
| 2 | PC | Data DT Ferrule | 7 |
| 2 | PC | Deutsch Contact Female Size 20 | 6 |
| SEE TABLE | MM | 2Pos, Twd Pair, 0.50 SQMM, Shielded | 5 |
| 1 | PC | Data DT Seal Cover | 4 |
| 2 | PC | Data DT SWS | 3 |
| 1 | PC | Data DT Plug Terminal System | 2 |
| 1 | PC | Data DT Plug Housing Assy | 1 |

| | | | | |
|--|--|--------------------------------|--|--------------------|
| THIS DRAWING IS A CONTROLLED DOCUMENT. | | DWN K. Schang 17MAY2021 | | |
| DIMENSIONS: mm | | CHK R. Pledra 18 MAY2021 | | |
| TOLERANCES UNLESS OTHERWISE SPECIFIED: | | APVD J. Barth 18 MAY2021 | NAME DT HIGH SPEED CAS FEMALE TO MALE | |
| | | PRODUCT SPEC - | - | |
| MATERIAL | | APPLICATION SPEC - | SIZE A2 | CAGE CODE 00779 |
| - | | FINISH - | DRAWING NO C=2382949 | RESTRICTED TO - |
| - | | WEIGHT - | CUSTOMER DRAWING | |
| | | SCALE 2:1 | SHEET 1 OF 1 | REV B |