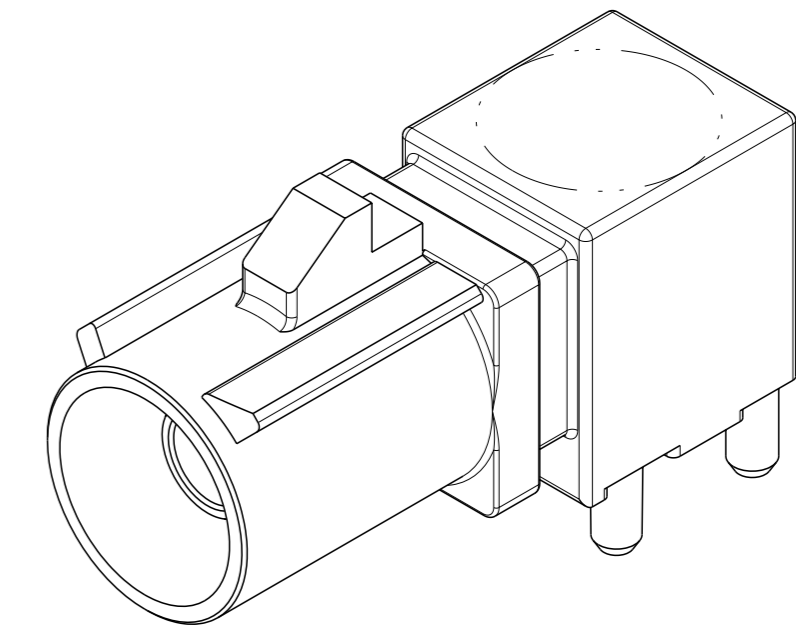
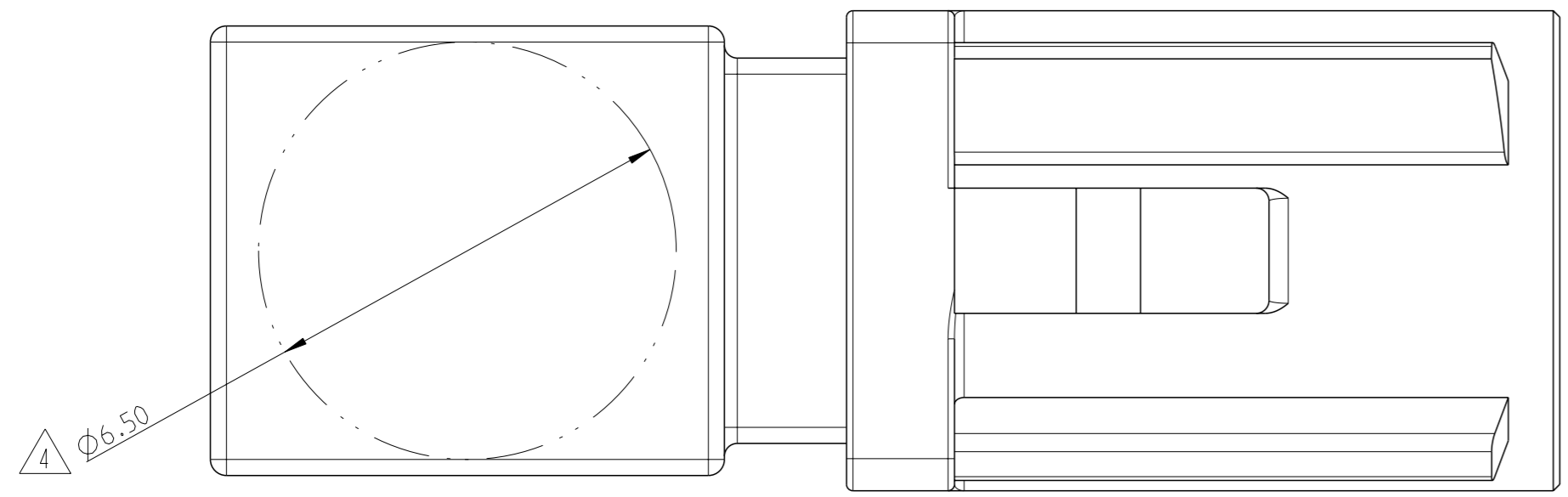
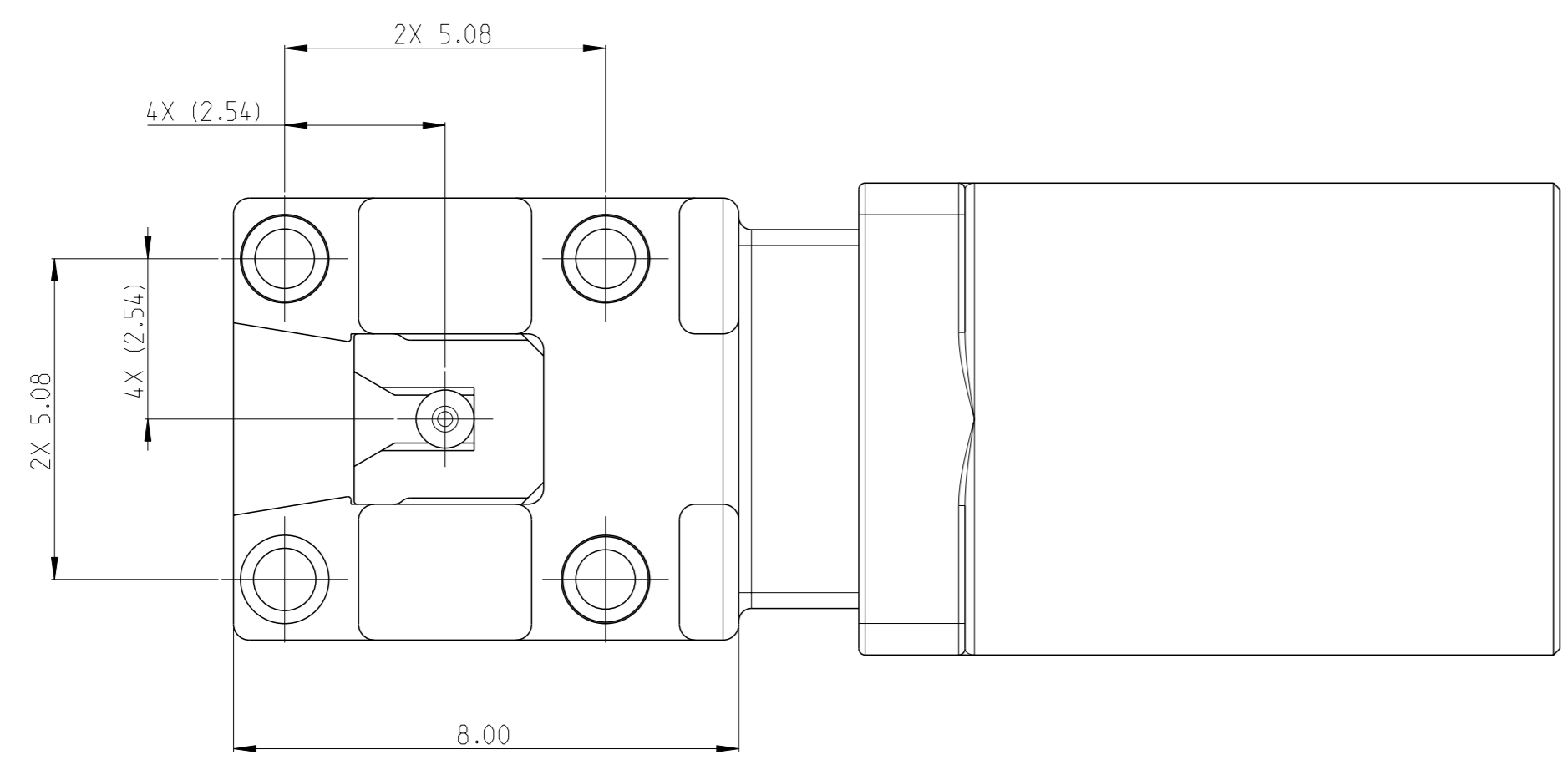
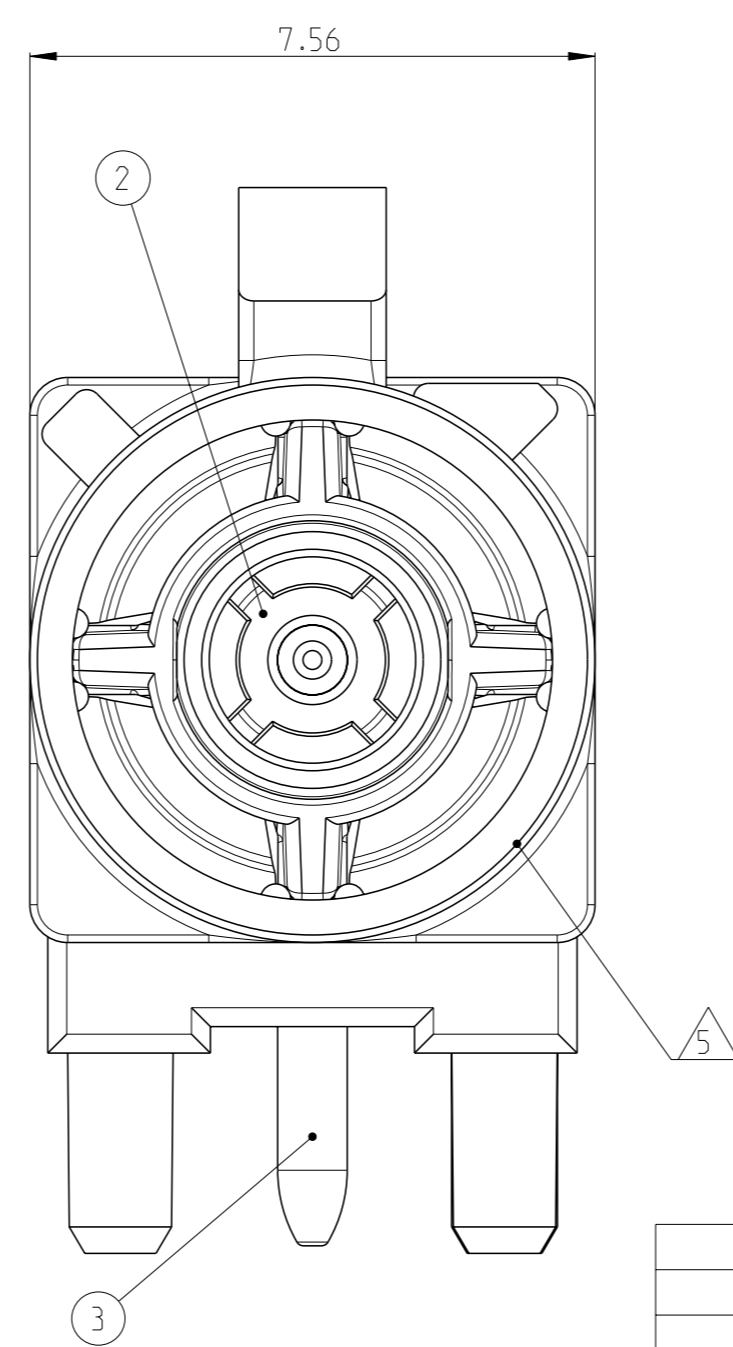
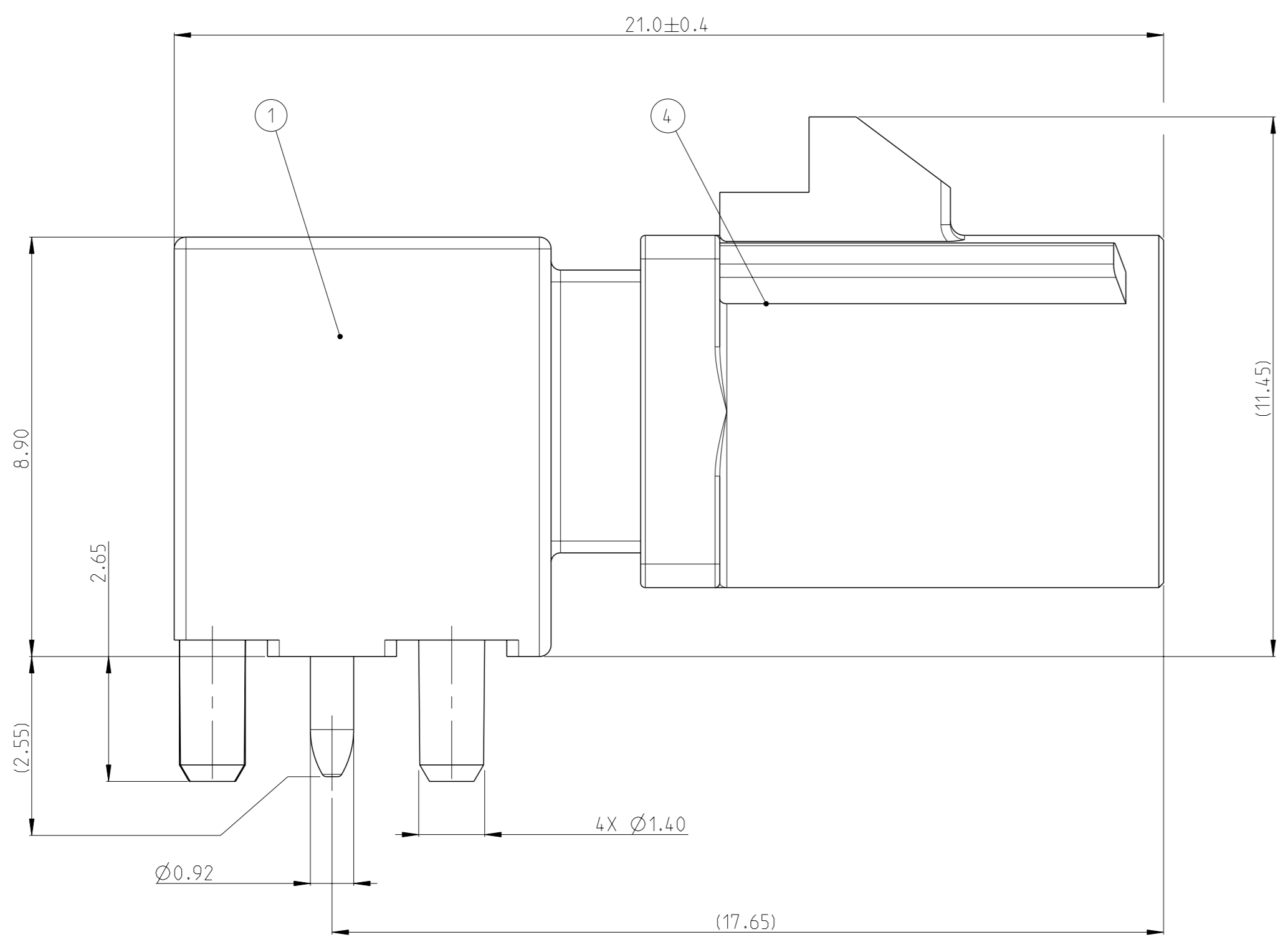


| REVISIONS |     |               |         |          |
|-----------|-----|---------------|---------|----------|
| #         | CT# | DESCRIPTION   | DATE    | OWN APVD |
| B1        |     | ECN-21-12486  | 03NOV21 | A.C I.Y  |
| B2        |     | ECN-24-290855 | 28OCT24 | A.C I.Y  |
| B3        |     | ECN-25-310312 | 08MAR25 | A.C C.P  |
| B4        |     | ECN-26-362489 | 07JAN25 | A.C C.P  |



SCALE 5:1

- 1 NOSE CONE - NYLON. COLOR: SEE TABLE. 30% GLASS FILLED. DIELECTRIC - POLYESTER PCT. NATURAL. 30% GLASS FILLED. PIN CONTACT - BRASS. OUTER SHELL - ZINC.
- 2 PIN CONTACT - 0.38 μm MIN GOLD ON INTERFACE END. 2.5 μm MIN TIN ON SOLDER END. BOTH OVER 1.3 μm MIN NICKEL. OUTER SHELL - 2.0 μm MIN TIN OVER 1.52 μm MIN NICKEL. BOTH OVER 2.54 μm MIN COPPER.
- 3 MASS = 3.94g (REFERENCE)
- 4 VACUUM PICKUP AREA.
- 5 ROAD VEHICLES 50 Ohm RADIO FREQUENCY INTERFACE.
- 6 PACKAGING: TAPE AND REEL.



|               |                 |                |              |                     |            |             |                                |   |            |             |             |
|---------------|-----------------|----------------|--------------|---------------------|------------|-------------|--------------------------------|---|------------|-------------|-------------|
| PER DETAIL Z  | WATER BLUE      | MATERIAL BRASS | MATERIAL PCT | MATERIAL ZINC ALLOY | Z          | 4-2291392-0 | LATCH DIRECTION:<br>6 O'CLOCK  |   |            |             |             |
| PER DETAIL N  | PASTEL GREEN    |                |              |                     | N          | 3-2291392-3 |                                |   |            |             |             |
| PER DETAIL M  | PASTEL ORANGE   |                |              |                     | M          | 3-2291392-2 |                                |   |            |             |             |
| PER DETAIL L  | CARMINE RED     |                |              |                     | L          | 3-2291392-1 |                                |   |            |             |             |
| PER DETAIL K  | CURRY           |                |              |                     | K          | 3-2291392-0 |                                |   |            |             |             |
| PER DETAIL I  | BEIGE           |                |              |                     | I          | 2-2291392-9 |                                |   |            |             |             |
| PER DETAIL H  | HEATHER VIOLET  |                |              |                     | H          | 2-2291392-8 |                                |   |            |             |             |
| PER DETAIL G  | BLUE GREY       |                |              |                     | G          | 2-2291392-7 |                                |   |            |             |             |
| PER DETAIL F  | NUT BROWN       |                |              |                     | F          | 2-2291392-6 |                                |   |            |             |             |
| PER DETAIL E  | LEAF GREEN      |                |              |                     | E          | 2-2291392-5 |                                |   |            |             |             |
| PER DETAIL D  | CLARET VIOLET   |                |              |                     | D          | 2-2291392-4 |                                |   |            |             |             |
| PER DETAIL C  | SIGNAL BLUE     |                |              |                     | C          | 2-2291392-3 |                                |   |            |             |             |
| PER DETAIL B  | CREAM           |                |              |                     | B          | 2-2291392-2 |                                |   |            |             |             |
| PER DETAIL A  | JET BLACK       | A              | 2-2291392-1  |                     |            |             |                                |   |            |             |             |
| PER DETAIL Z  | WATER BLUE      | MATERIAL BRASS | MATERIAL PCT | MATERIAL ZINC ALLOY | Z          | 2-2291392-0 | LATCH DIRECTION:<br>12 O'CLOCK |   |            |             |             |
| PER DETAIL N  | PASTEL GREEN    |                |              |                     | N          | 1-2291392-3 |                                |   |            |             |             |
| PER DETAIL M  | PASTEL ORANGE   |                |              |                     | M          | 1-2291392-2 |                                |   |            |             |             |
| PER DETAIL L  | CARMINE RED     |                |              |                     | L          | 1-2291392-1 |                                |   |            |             |             |
| PER DETAIL K  | CURRY           |                |              |                     | K          | 1-2291392-0 |                                |   |            |             |             |
| PER DETAIL I  | BEIGE           |                |              |                     | I          | 2291392-9   |                                |   |            |             |             |
| PER DETAIL H  | HEATHER VIOLET  |                |              |                     | H          | 2291392-8   |                                |   |            |             |             |
| PER DETAIL G  | BLUE GREY       |                |              |                     | G          | 2291392-7   |                                |   |            |             |             |
| PER DETAIL F  | NUT BROWN       |                |              |                     | F          | 2291392-6   |                                |   |            |             |             |
| PER DETAIL E  | LEAF GREEN      |                |              |                     | E          | 2291392-5   |                                |   |            |             |             |
| PER DETAIL D  | CLARET VIOLET   |                |              |                     | D          | 2291392-4   |                                |   |            |             |             |
| PER DETAIL C  | SIGNAL BLUE     |                |              |                     | C          | 2291392-3   |                                |   |            |             |             |
| PER DETAIL B  | CREAM           |                |              |                     | B          | 2291392-2   |                                |   |            |             |             |
| PER DETAIL A  | JET BLACK       | A              | 2291392-1    |                     |            |             |                                |   |            |             |             |
| CODING DETAIL | NOSE CONE COLOR | 4              | CENTER PIN   | 3                   | DIELECTRIC | 2           | DIE CASTING                    | 1 | CODING REF | PART NUMBER | DESCRIPTION |

THIS DRAWING IS A CONTROLLED DOCUMENT.

DIMENSIONS: mm

TOLERANCES UNLESS OTHERWISE SPECIFIED:

|        |       |
|--------|-------|
| 0 PLC  | ±     |
| 1 PLC  | ±0.3  |
| 2 PLC  | ±0.20 |
| 3 PLC  | ±     |
| 4 PLC  | ±     |
| ANGLES | ±     |
| FINISH | ±     |

MATERIAL: -

WEIGHT: -

CUSTOMER DRAWING

OWN: A.CAI 03NOV2021  
CHK: C.PAN 03NOV2021  
APVD: I.YIN 03NOV2021

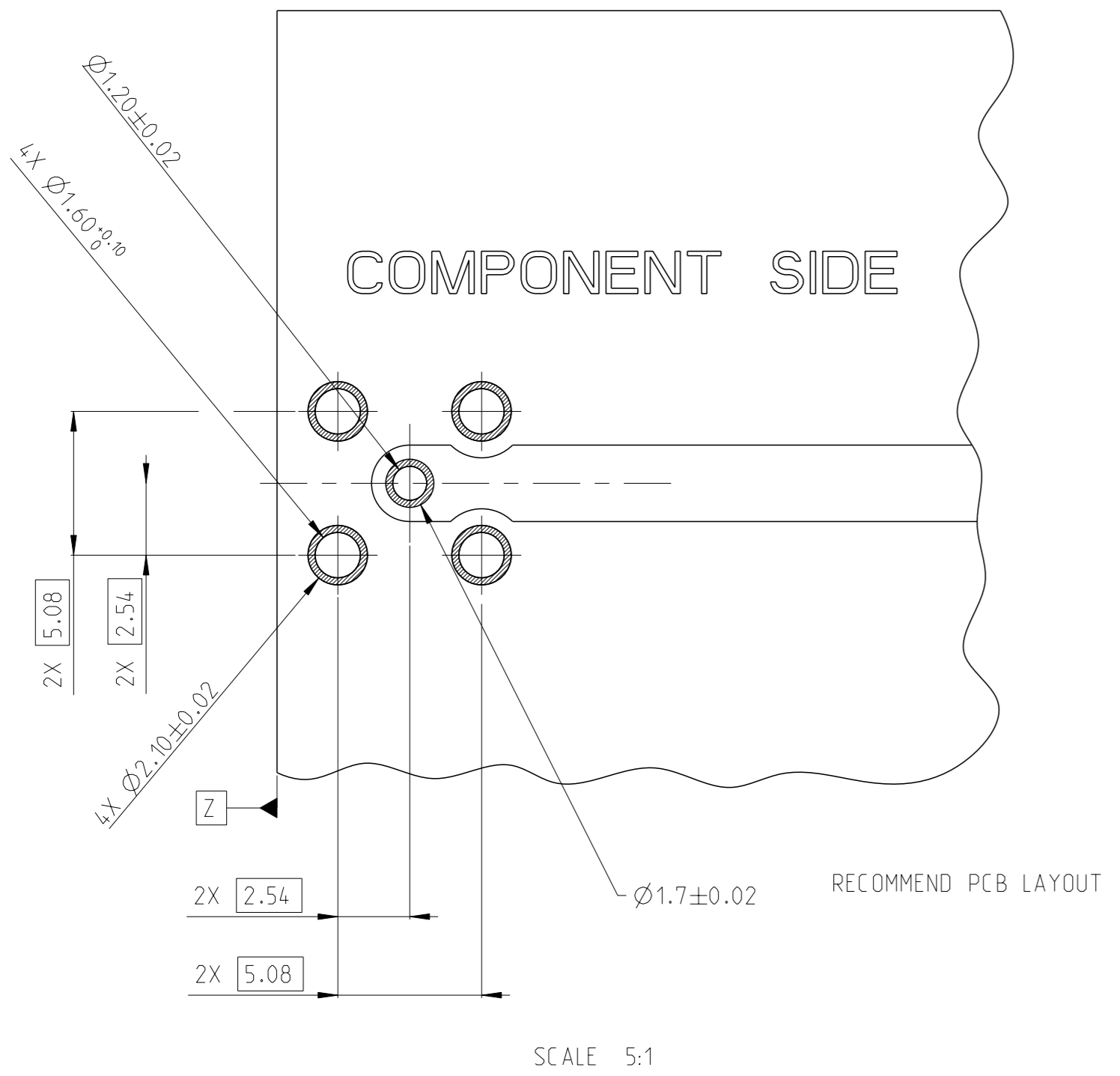
PRODUCT SPEC: 108-32058  
APPLICATION SPEC: -

SIZE: A | CAGE CODE: 00779 | DRAWING NO: C=2291392

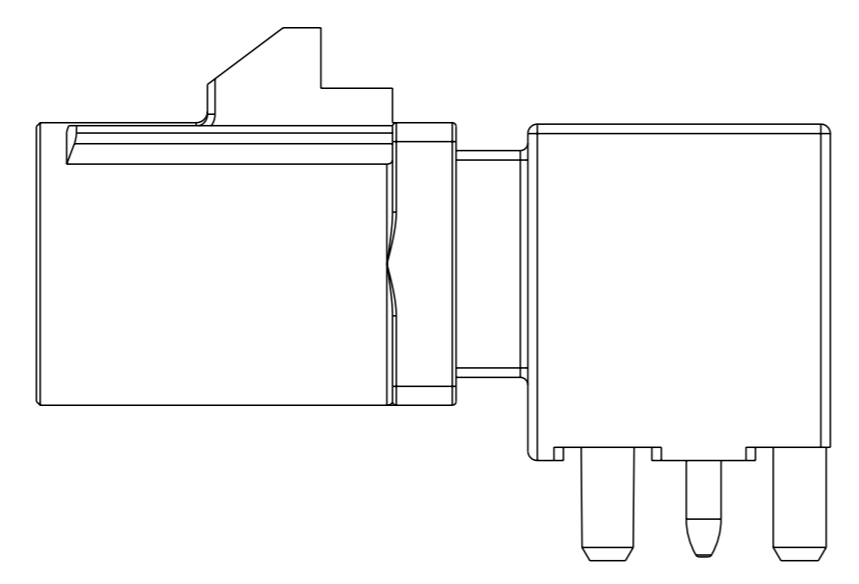
RESTRICTED TO: -

SCALE: 10:1 | SHEET: 1 OF 3 | REV: B4

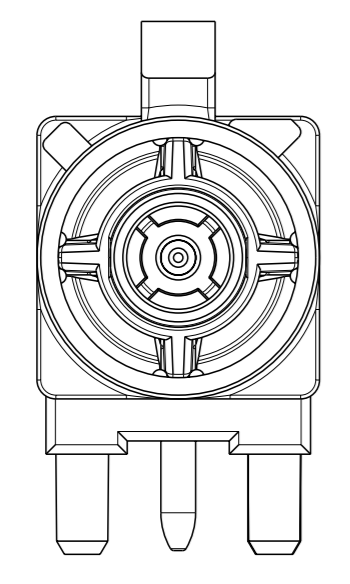
| REVISIONS |      |             |      |        |
|-----------|------|-------------|------|--------|
| #         | DATE | DESCRIPTION | DATE | APPROV |
| -         | -    | SEE SHEET 1 | -    | -      |
|           |      |             |      |        |
|           |      |             |      |        |



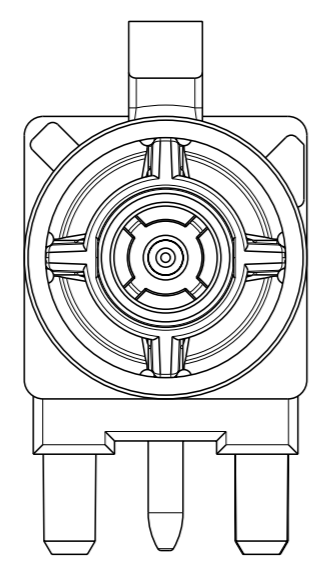
# CODINGS



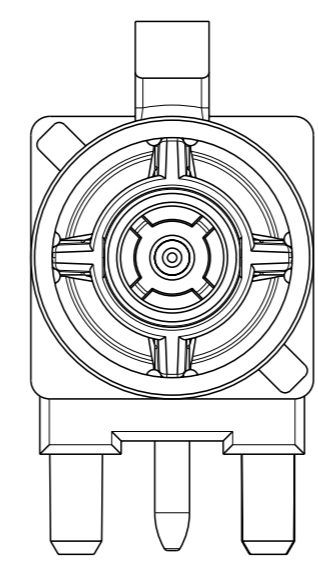
LATCH DIRECTION: 12 O'CLOCK



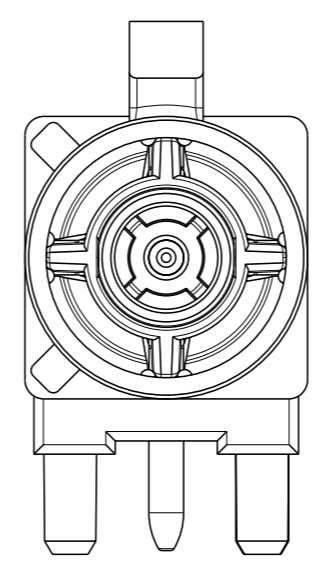
DETAIL A  
SCALE 5:1



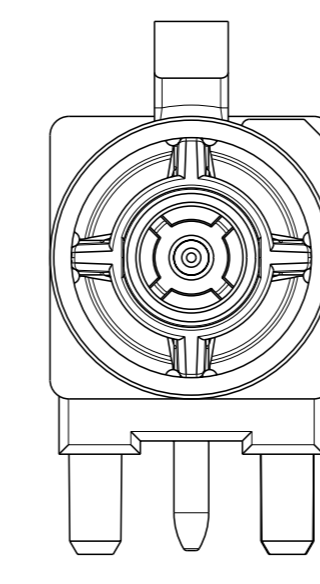
DETAIL B  
SCALE 5:1



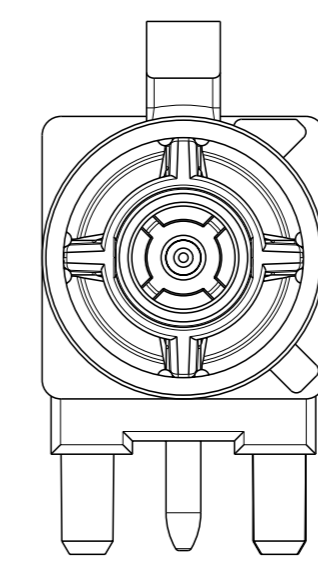
DETAIL C  
SCALE 5:1



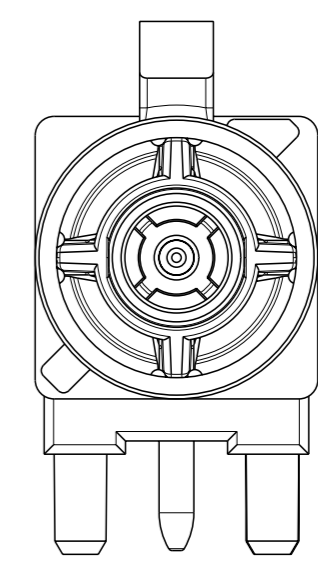
DETAIL D  
SCALE 5:1



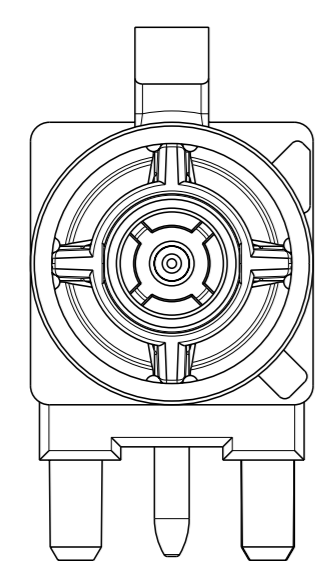
DETAIL E  
SCALE 5:1



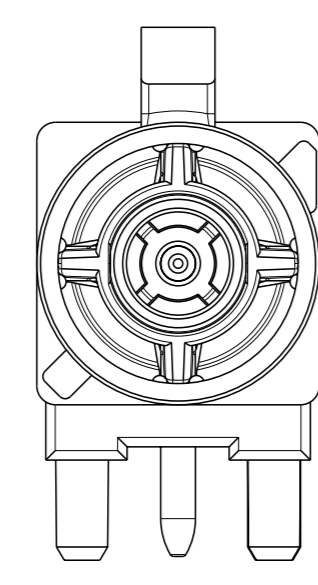
DETAIL F  
SCALE 5:1



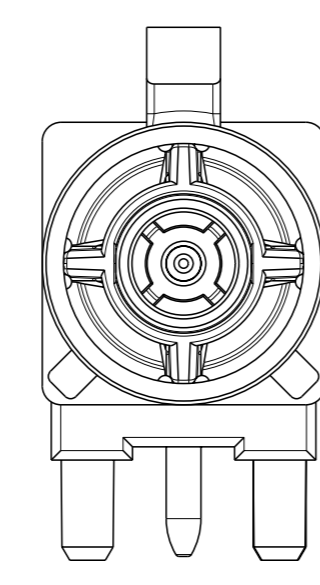
DETAIL G  
SCALE 5:1



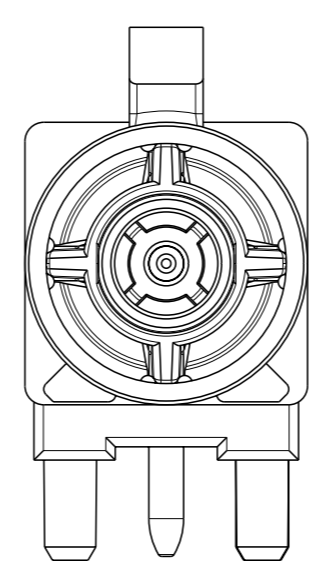
DETAIL H  
SCALE 5:1



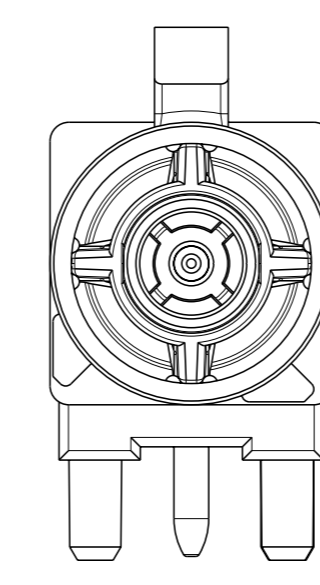
DETAIL I  
SCALE 5:1



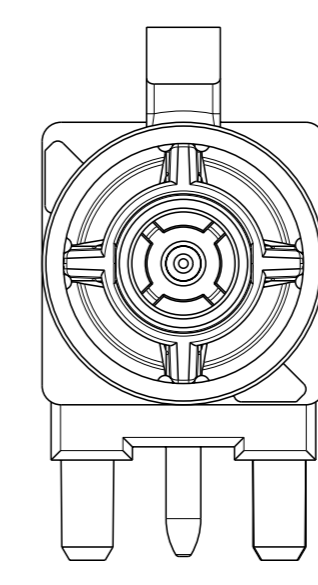
DETAIL K  
SCALE 5:1



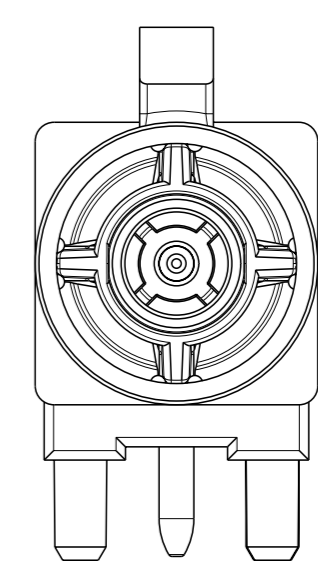
DETAIL L  
SCALE 5:1



DETAIL M  
SCALE 5:1



DETAIL N  
SCALE 5:1



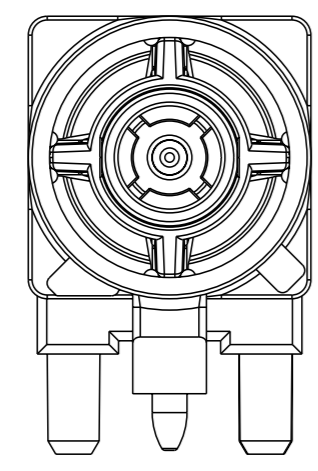
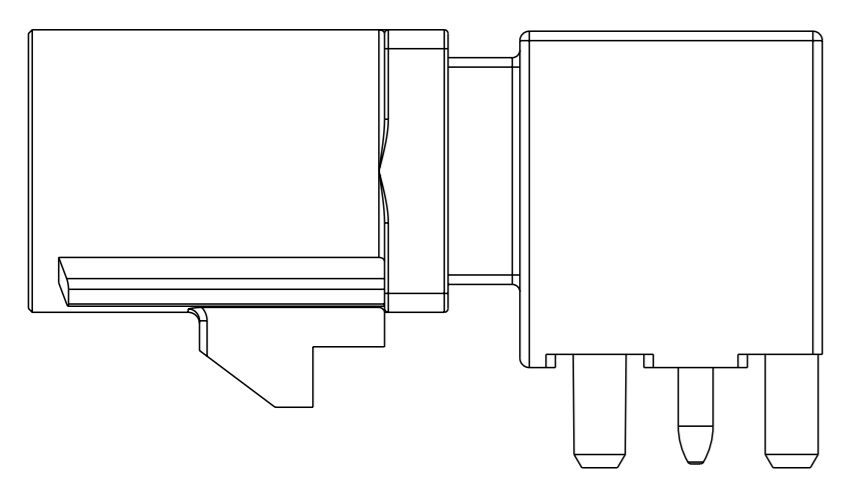
DETAIL Z  
SCALE 5:1

|  |  |                       |                  |   |                     |
|--|--|-----------------------|------------------|---|---------------------|
| THIS DRAWING IS A CONTROLLED DOCUMENT.   |  | OWN: A,CAI 03NOV2021  |                  | NAME: MALE ASSEMBLY, STANDOFF<br>1 POSITION, PCB, FAKRA |                     |
| DIMENSIONS: mm   |  | CHK: C,PAN 03NOV2021  |                  |   | SIZE: A             |
| TOLERANCES UNLESS OTHERWISE SPECIFIED:   |  | APVD: LYXIN 03NOV2021 |                  |   | CAGE CODE: 00779    |
| 0 PLC ±<br>1 PLC ±0.3<br>2 PLC ±0.20<br>3 PLC ±<br>4 PLC ±<br>ANGLES ±<br>FINISH * |  | PRODUCT SPEC: -       |                  |   | DRAWING NO: 2291392 |
| MATERIAL: -  |  | APPLICATION SPEC: -   | RESTRICTED TO: - |   |                     |
| FINISH: -  |  | WEIGHT: -             | SCALE: 6:1       | SHEET 2 OF 3  |                     |
| CUSTOMER DRAWING   |  | SCALE: 6:1            | REV: B4          |   |                     |

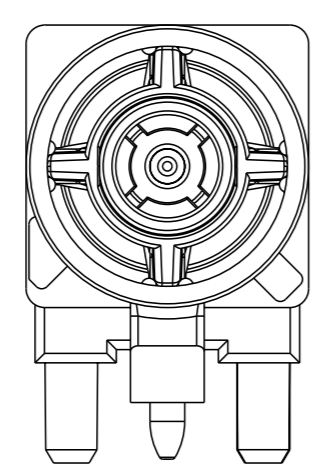
LATCH DIRECTION: 6 O'CLOCK

# CODINGS

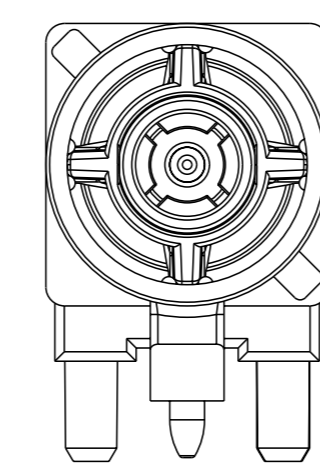
| REVISIONS |     |             |      |     |
|-----------|-----|-------------|------|-----|
| #         | LY# | DESCRIPTION | DATE | OWN |
| -         |     | SEE SHEET 1 | -    | -   |
|           |     |             |      |     |
|           |     |             |      |     |



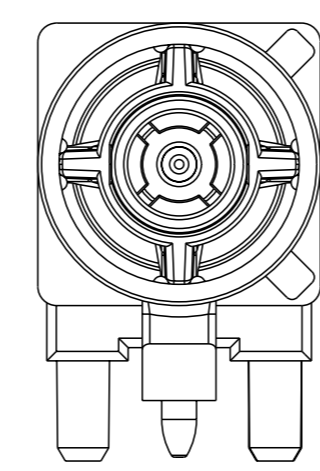
DETAIL A



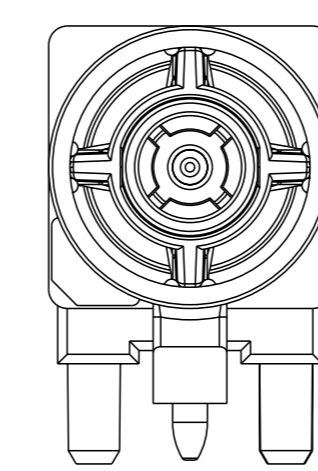
DETAIL B



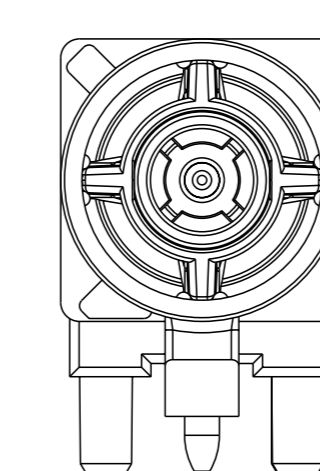
DETAIL C



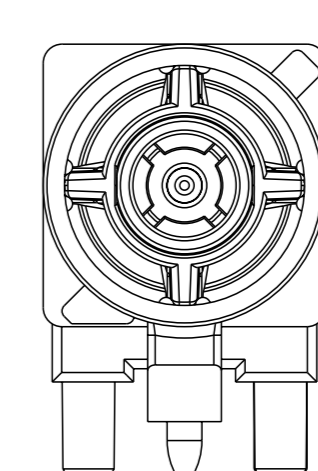
DETAIL D



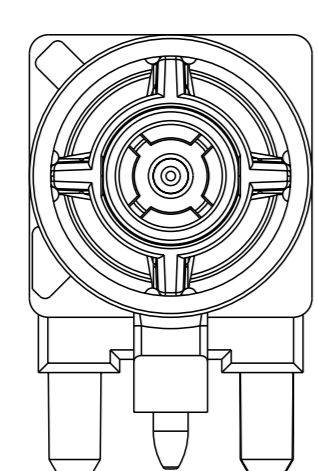
DETAIL E



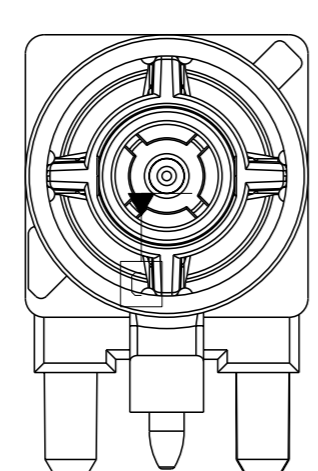
DETAIL F



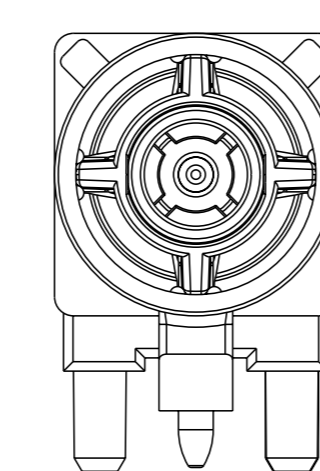
DETAIL G



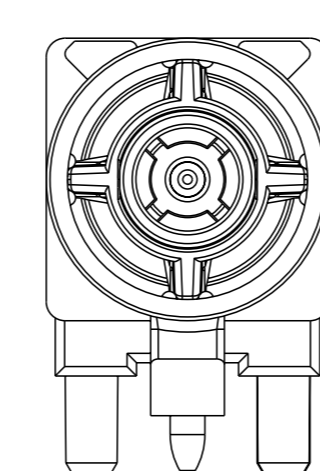
DETAIL H



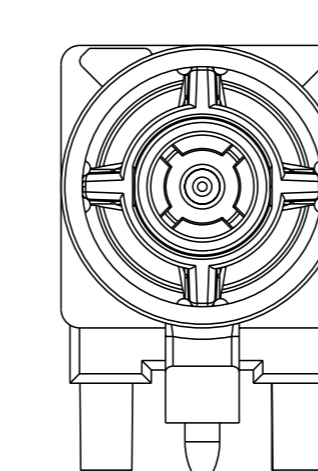
DETAIL I



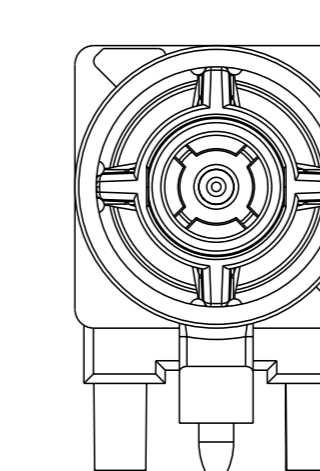
DETAIL K



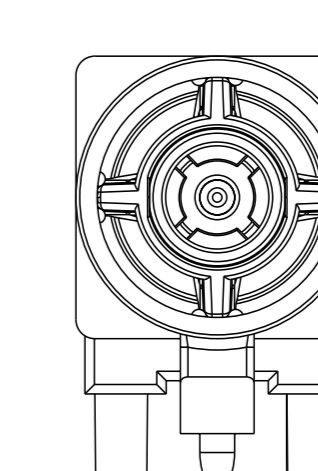
DETAIL L



DETAIL M



DETAIL N



DETAIL Z

|  |       |                  |           |                  |   |
|--|-------|------------------|-----------|------------------|---|
| THIS DRAWING IS A CONTROLLED DOCUMENT. |       | OWN<br>A.CAI     | 03NOV2021 |                  | NAME<br>MALE ASSEMBLY, STANDOFF<br>1 POSITION, PCB, FAKRA |
| DIMENSIONS:<br>mm                      |       | CHK<br>C.PAN     | 03NOV2021 |                  |   |
| TOLERANCES UNLESS OTHERWISE SPECIFIED: |       | APVD<br>LYN      | 03NOV2021 | SIZE             | CAGE CODE   |
| 0 PLC                                  | ±     | PRODUCT SPEC     |           | A                | 00779   |
| 2 PLC                                  | ±0.3  | APPLICATION SPEC |           | SCALE            | ©=2291392   |
| 3 PLC                                  | ±0.20 |                  |           | 6:1              |   |
| 4 PLC                                  | ±     |                  |           | SHEET            | 3 OF 3  |
| ANGLES                                 | ±     |                  |           | REV              | B4  |
| FINISH                                 | *     |                  |           |                  |   |
| MATERIAL                               | -     | WEIGHT           | -         | CUSTOMER DRAWING |   |