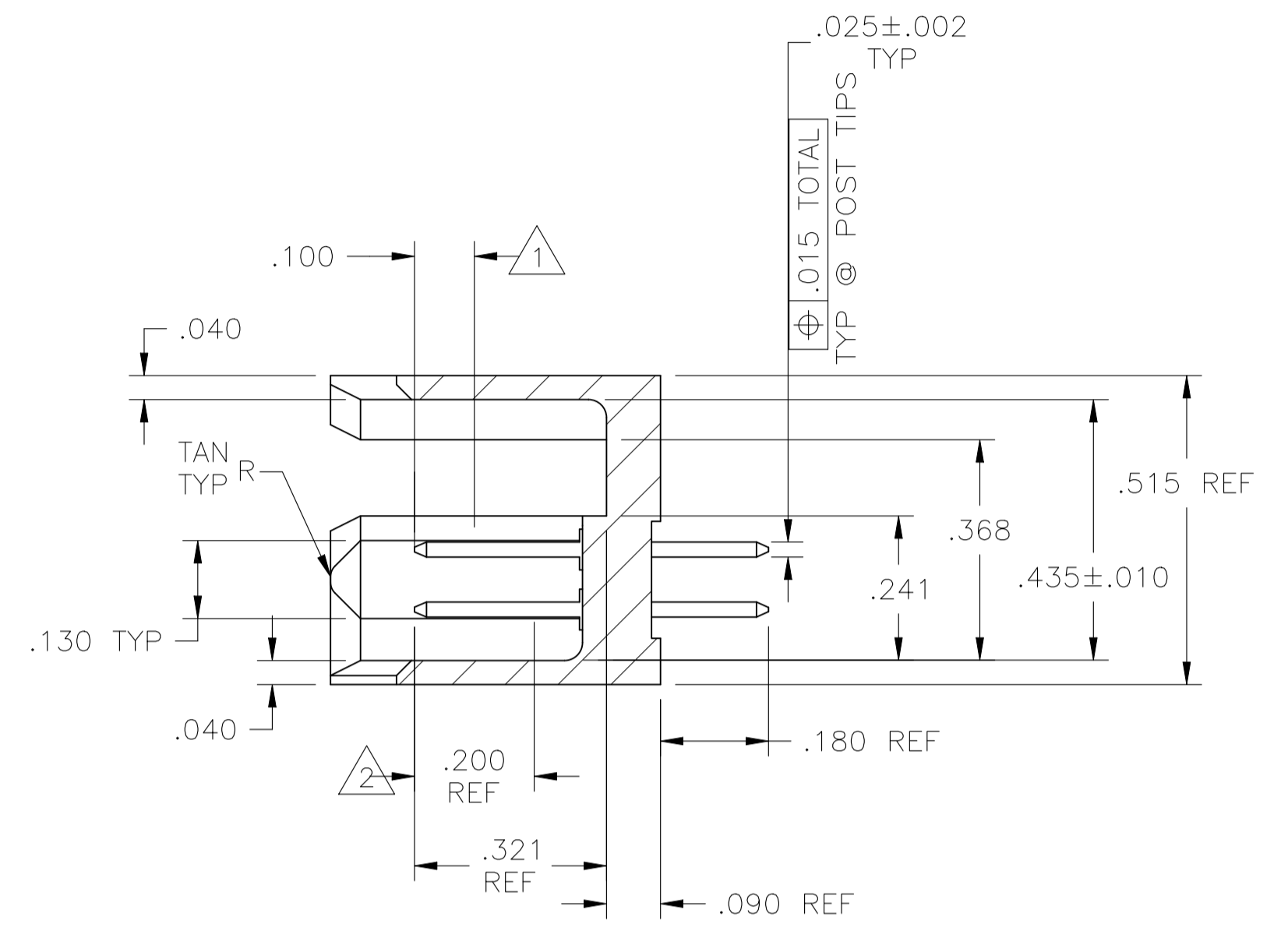
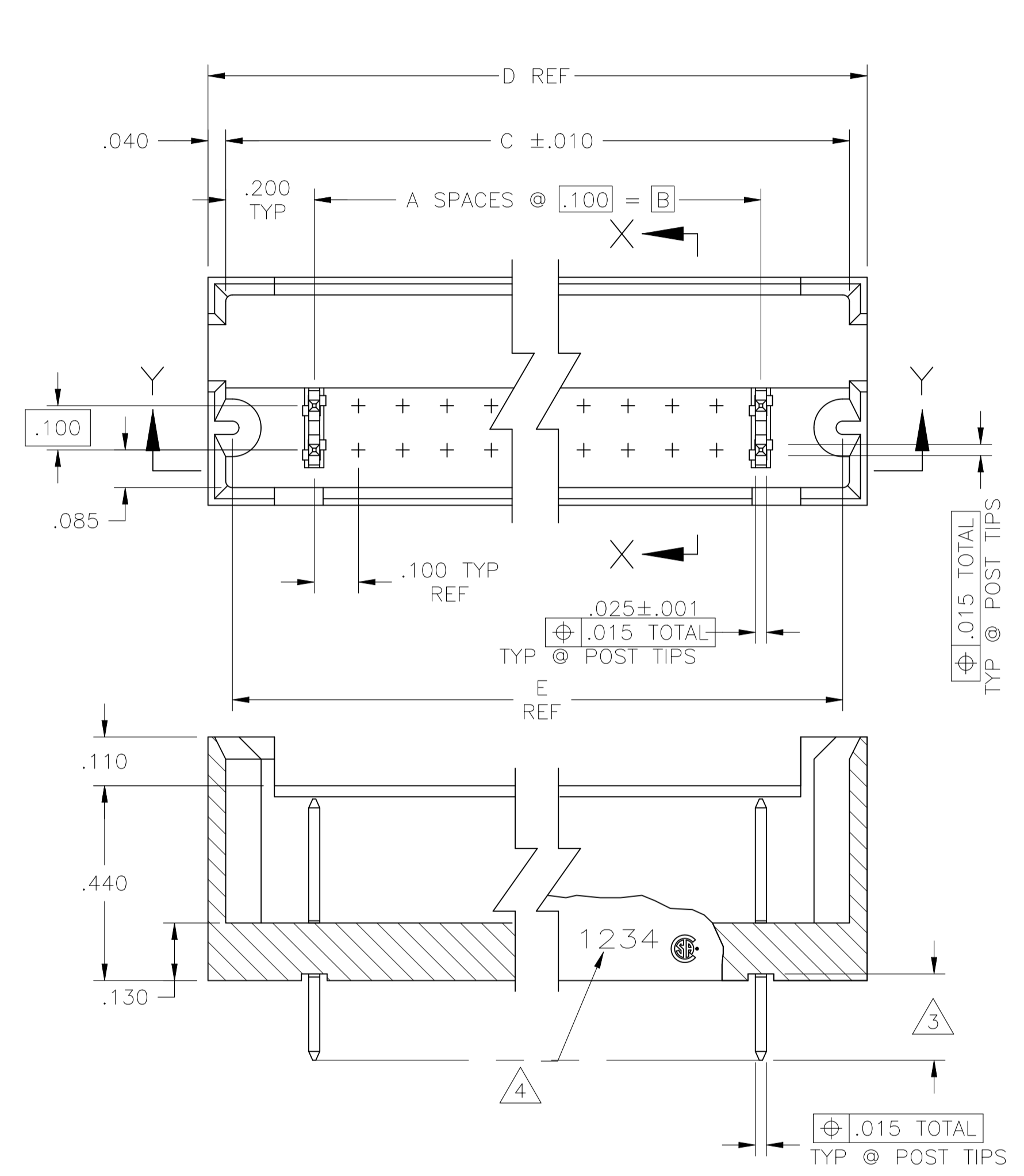
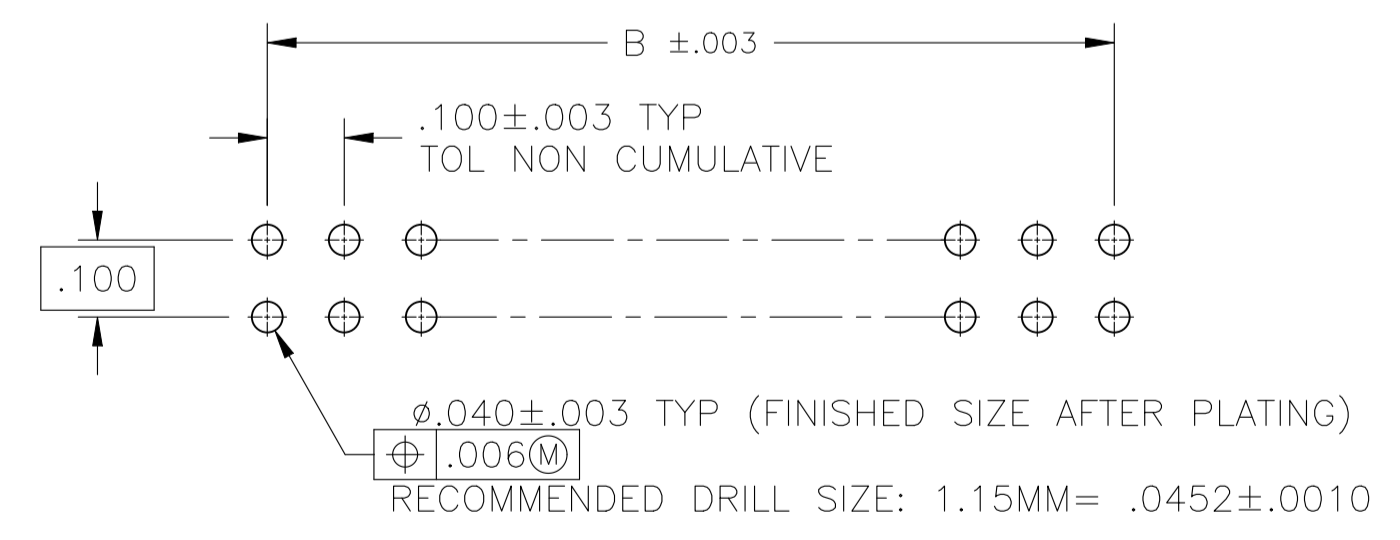


REVISIONS					
P	LTR	DESCRIPTION	DATE	DN	APVD
L6	ECR-25-238910		02APR2025	ABS	PS



SECTION X-X

- 1 POINT OF MEASUREMENT FOR PLATING THICKNESS.
- 2 FINISH OVER INDICATED AREA: .000030 GOLD OVER .000050 NICKEL.
- 3 FINISH OVER INDICATED AREA: .000100-.000200 BRIGHT TIN LEAD OVER .000050 NICKEL.
- 4 RECESSED DATE CODE AND LOGO.
- 5 OBSOLETE PART NUMBER.
- 6 PRELIMINARY PART - NOT RELEASED FOR PRODUCTION
- 7 FINISH OVER INDICATED AREA: .000100-.000200 MATTE TIN OVER .000050 NICKEL.
- 8 ROHS 2002/95/EC COMPLIANT
- 9 OBSOLETE PARTS: OBSOLETE CIS STREAMLINING PER D.RENAUD/D.SINISI



RECOMMENDED HOLE SIZE

NO. OF POSN	A	B	C ±.010	D	E	PART NUMBER
12	26	12	1.200	1.600	1.570	7-102692-9
160	79	79	7.900	8.300	8.270	7-102692-8
21	44	46	2.100	5.080	4.970	7-102692-7
6	14	21	1.600	2.580	2.470	7-102692-6
180	89	6	1.000	1.080	.970	7-102692-5
148	73	89	7.300	7.780	7.670	7-102692-4
128	63	180	6.300	6.780	6.670	7-102692-3
140	69	128	6.900	7.380	7.270	7-102692-2
130	64	140	6.400	6.880	6.770	7-102692-1
86	42	64	4.200	4.680	4.570	6-102692-9
72	35	86	3.500	3.980	3.870	6-102692-8
30	14	72	1.400	1.770	1.770	6-102692-7
20	9	30	.900	1.270	1.270	6-102692-6
16	7	20	.700	1.070	1.070	6-102692-5
70	34	16	3.400	3.770	3.770	6-102692-4
40	19	70	1.900	2.270	2.270	6-102692-3
90	44	40	4.400	4.770	4.770	6-102692-2
200	99	90	9.900	10.270	10.270	6-102692-1
110	54	200	5.400	5.770	5.770	6-102692-0
120	59	110	5.900	6.270	6.270	5-102692-9
100	49	120	4.900	5.270	5.270	5-102692-8
96	47	100	4.700	5.070	5.070	5-102692-7
80	39	96	3.900	4.270	4.270	5-102692-6
60	29	80	2.900	3.270	3.270	5-102692-5
50	24	60	2.400	2.770	2.770	5-102692-4
36	17	50	1.700	2.070	2.070	5-102692-3
24	11	36	1.100	1.470	1.470	5-102692-2
12	5	24	.500	.870	.870	5-102692-1
12	26	12	1.200	1.570	1.570	2-102692-9
160	79	160	7.900	8.270	8.270	2-102692-8
21	44	21	2.100	2.470	2.470	2-102692-7
6	14	6	1.000	1.080	.970	2-102692-6
180	89	6	1.000	1.080	.970	2-102692-5
148	73	180	7.300	7.780	7.670	2-102692-4
128	63	148	6.300	6.780	6.670	2-102692-3
140	69	128	6.900	7.380	7.270	2-102692-2
130	64	140	6.400	6.880	6.770	2-102692-1
86	42	130	4.200	4.680	4.570	1-102692-9
72	35	86	3.500	3.980	3.870	1-102692-8
30	14	72	1.400	1.770	1.770	1-102692-7
20	9	30	.900	1.270	1.270	1-102692-6
16	7	20	.700	1.070	1.070	1-102692-5
70	34	16	3.400	3.770	3.770	1-102692-4
40	19	70	1.900	2.270	2.270	1-102692-3
90	44	40	4.400	4.770	4.770	1-102692-2
200	99	90	9.900	10.270	10.270	1-102692-1
110	54	200	5.400	5.770	5.770	1-102692-0
120	59	110	5.900	6.270	6.270	102692-9
100	49	120	4.900	5.270	5.270	102692-8
96	47	100	4.700	5.070	5.070	102692-7
80	39	96	3.900	4.270	4.270	102692-6
60	29	80	2.900	3.270	3.270	102692-5
50	24	60	2.400	2.770	2.770	102692-4
36	17	50	1.700	2.070	2.070	102692-3
24	11	36	1.100	1.470	1.470	102692-2
12	5	24	.500	.870	.870	102692-1

THIS DRAWING IS A CONTROLLED DOCUMENT.

DIMENSIONS: INCHES	TOLERANCES UNLESS OTHERWISE SPECIFIED:	DIN B HAYMAKER 11JAN01	TE Connectivity
0. PLC ± -	1. PLC ± -	CHK J. GESFORD 12NOV98	NAME
2. PLC ± -	3. PLC ± .005	APVD J. GESFORD 12NOV98	PRODUCT SPEC
4. PLC ± -	ANGLES ± -		APPLICATION SPEC
MATERIAL: HEADER: GLASS FILLED FLAME RETARDANT THERMOPLASTIC COLOR: BLACK POST: COPPER ALLOY	FINISH: SEE TABLE	WEIGHT: -	SIZE: A1
		CAGE CODE: 00779	DRAWING NO: 102692
		CUSTOMER DRAWING	SCALE: 4:1
			SHEET 1 OF 1
			REV L6