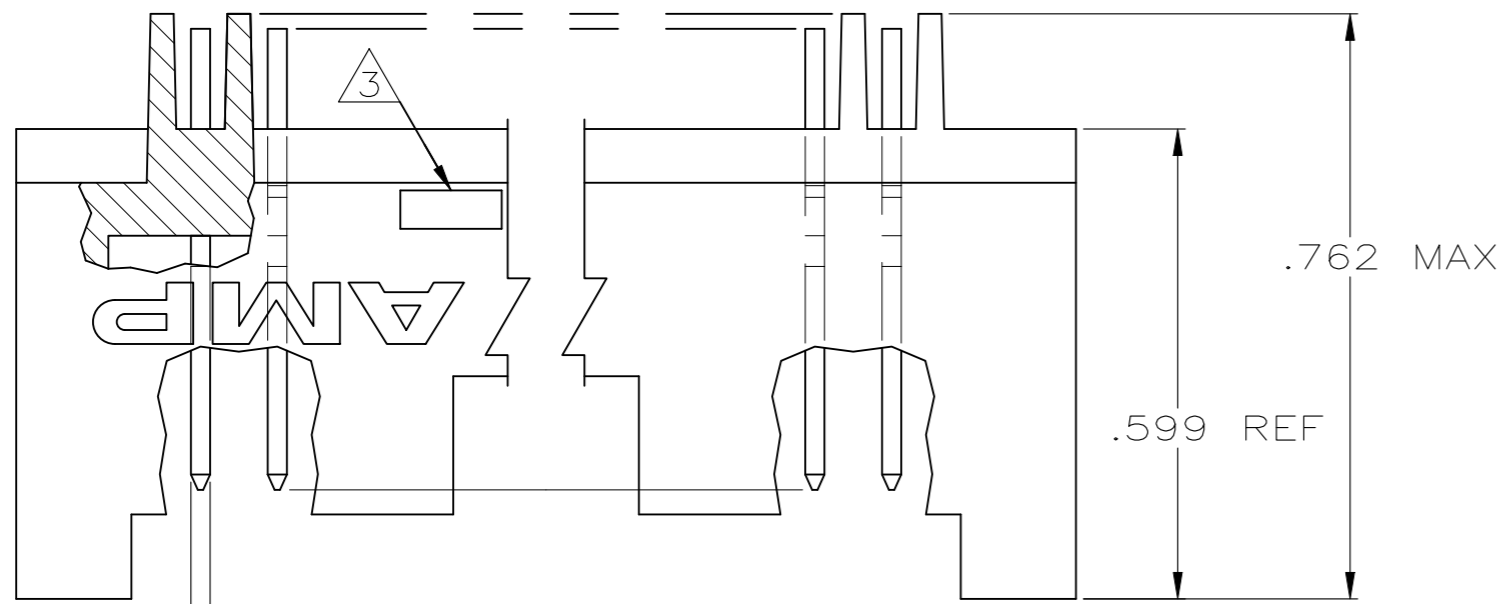
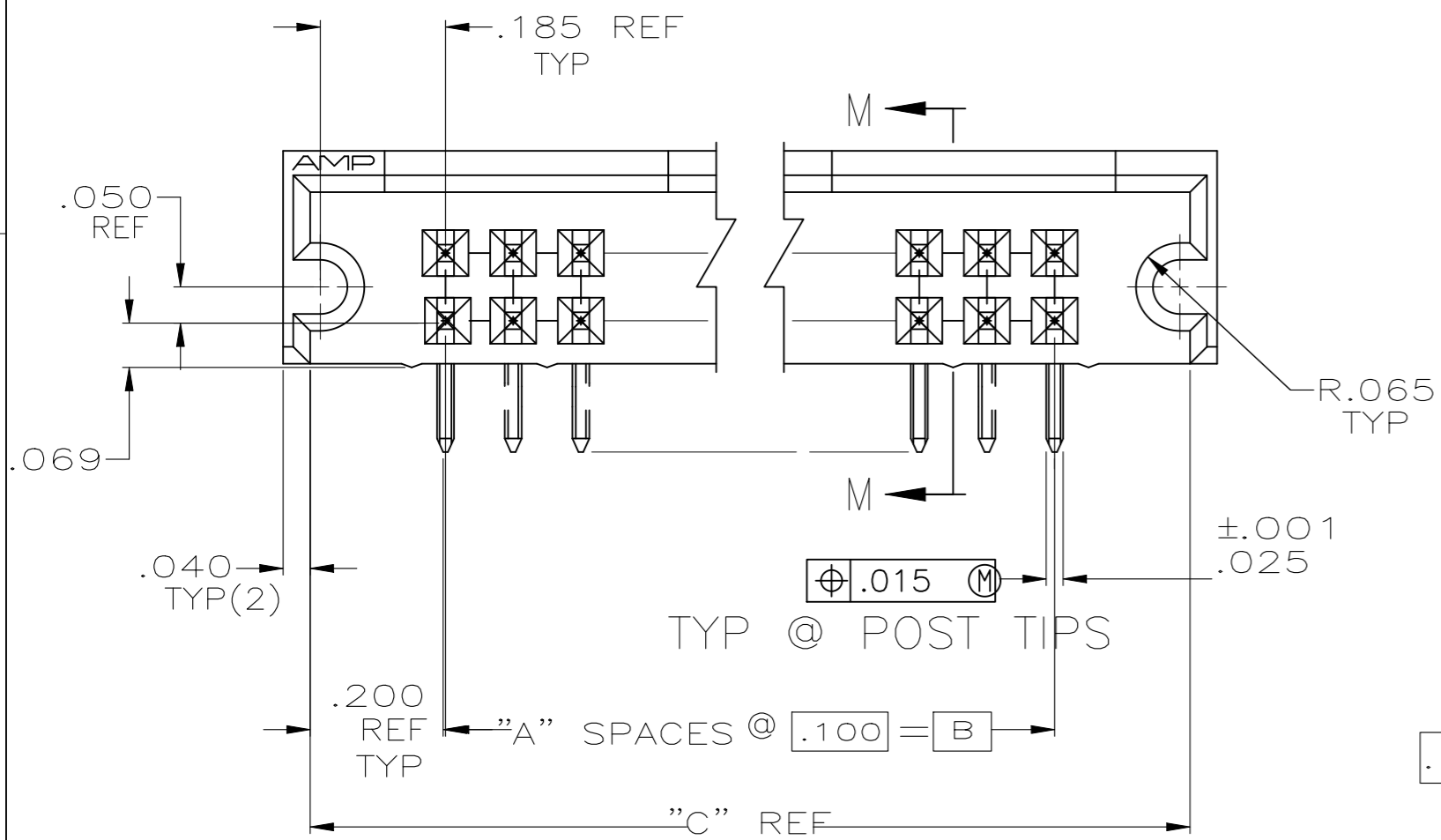


REVISIONS					
P	LTR	DESCRIPTION	DATE	DWN	APVD
P4	ECR-25-238910		02APR2025	ABS	PS

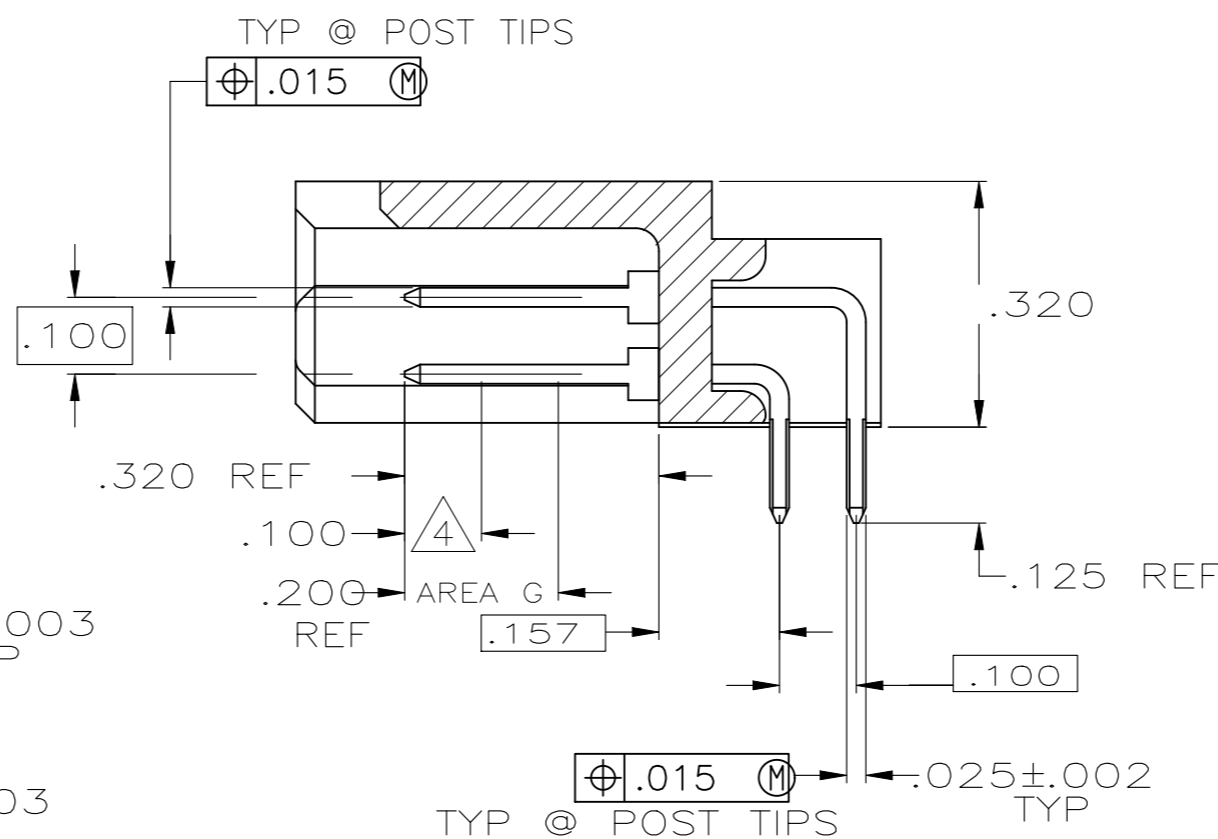


Ø.015 M
TYP @ POST TIPS

- 1 PART NO. OBSOLETE
- 2 .000015 GOLD ON CONTACT AREA G
.000100-.000200 BRIGHT TIN-LEAD
ON SOLDER LEADS, ALL OVER
.000050 NICKEL
- 3 RECESSED DATE CODE AND CSA LOGO
- 4 POINT OF MEASUREMENT FOR
PLATING THICKNESS
- 5 .000015 GOLD ON CONTACT AREA G
.000100-.000200 MATTE TIN ON
SOLDER LEADS, ALL OVER .000050
NICKEL
- 6 ROHS 2002/95/EC COMPLIANT
- 7 OBSOLETE PARTS: OBSOLETE CIS STREAMLINING
PER D.RENAUD/D.SINISI
- 8 SUPERSEDED BY 5-102589-8
- 9 SUPERSEDED BY 5-102589-7
- 10 SUPERSEDED BY 5-102589-6
- 11 SUPERSEDED BY 5-102589-5
- 12 SUPERSEDED BY 5-102589-4
- 13 SUPERSEDED BY 5-102589-2



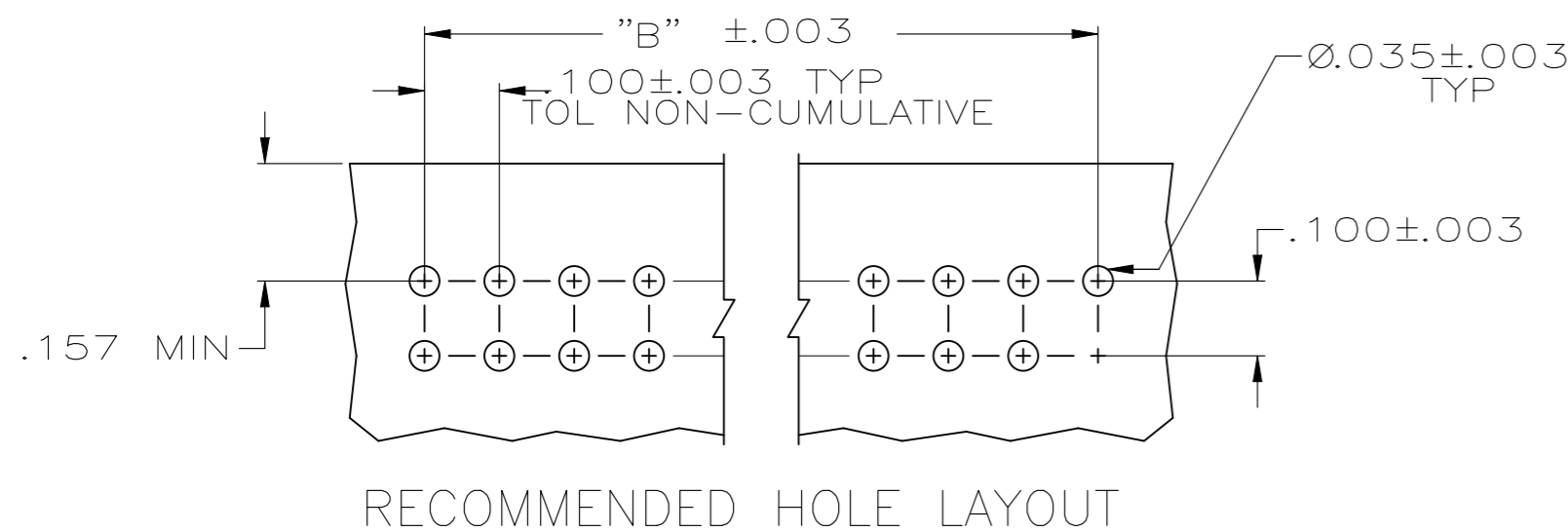
Ø.015 M
TYP @ POST TIPS



Ø.015 M
TYP @ POST TIPS

SECTION M-M

REMARKS	FINISH	"C"	"B"	"A"	NO OF POSN	PART NUMBER
1		.800	.400	4	10	7-102589-2
1		10.300	9.900	99	200	7-102589-1
1		7.300	6.900	69	140	7-102589-0
1		6.800	6.400	64	130	6-102589-9
1		4.600	4.200	42	86	6-102589-8
1		3.900	3.500	35	72	6-102589-7
1		5.800	.700	7	16	6-102589-6
1	5	5.800	5.400	54	110	6-102589-5
1		4.800	4.400	44	90	6-102589-4
		2.300	1.900	19	40	6-102589-3
		1.300	.900	9	20	6-102589-2
1		6.300	5.900	59	120	6-102589-1
1		3.800	3.400	34	70	6-102589-0
1		5.100	4.700	47	96	5-102589-9
		.900	.500	5	12	5-102589-8
		3.300	2.900	29	60	5-102589-7
		1.500	1.100	11	24	5-102589-6
		2.800	2.400	24	50	5-102589-5
		1.800	1.400	14	30	5-102589-4
1		5.300	4.900	49	100	5-102589-3
1		2.100	1.700	17	36	5-102589-2
1		4.300	3.900	39	80	5-102589-1
		.800	.400	4	10	7-102589-2
		10.300	9.900	99	200	2-102589-1
		7.300	6.900	69	140	2-102589-0
		6.800	6.400	64	130	7-102589-9
		4.600	4.200	42	86	1-102589-8
		3.900	3.500	35	72	7-102589-7
		1.100	.700	7	16	1-102589-6
		5.800	5.400	54	110	1-102589-5
		4.800	4.400	44	90	7-102589-4
		2.300	1.900	19	40	1-102589-3
		1.300	.900	9	20	1-102589-2
		6.300	5.900	59	120	7-102589-1
		3.800	3.400	34	70	1-102589-0
		5.100	4.700	47	96	102589-9
		.900	.500	5	12	102589-8
		3.300	2.900	29	60	102589-7
		1.500	1.100	11	24	102589-6
		2.800	2.400	24	50	102589-5
		1.800	1.400	14	30	102589-4
		5.300	4.900	49	100	7-102589-3
		2.100	1.700	17	36	102589-2
		4.300	3.900	39	80	7-102589-1



RECOMMENDED HOLE LAYOUT

THIS DRAWING IS A CONTROLLED DOCUMENT.

DWN	J KNAUB	12-2-93
CHK	H PALEY	12-20-93
APVD	-	-
PRODUCT SPEC	-	-
APPLICATION SPEC	-	-
WEIGHT	-	-

TE Connectivity

ASSY, HEADER, MOD II, .025 SQ POSTS
.100 X.100CL

SIZE: A2 CAGE CODE: 00779 DRAWING NO: C=102589 RESTRICTED TO: -

CUSTOMER DRAWING SCALE: 4:1 SHEET: 1 OF 1 REV: P4