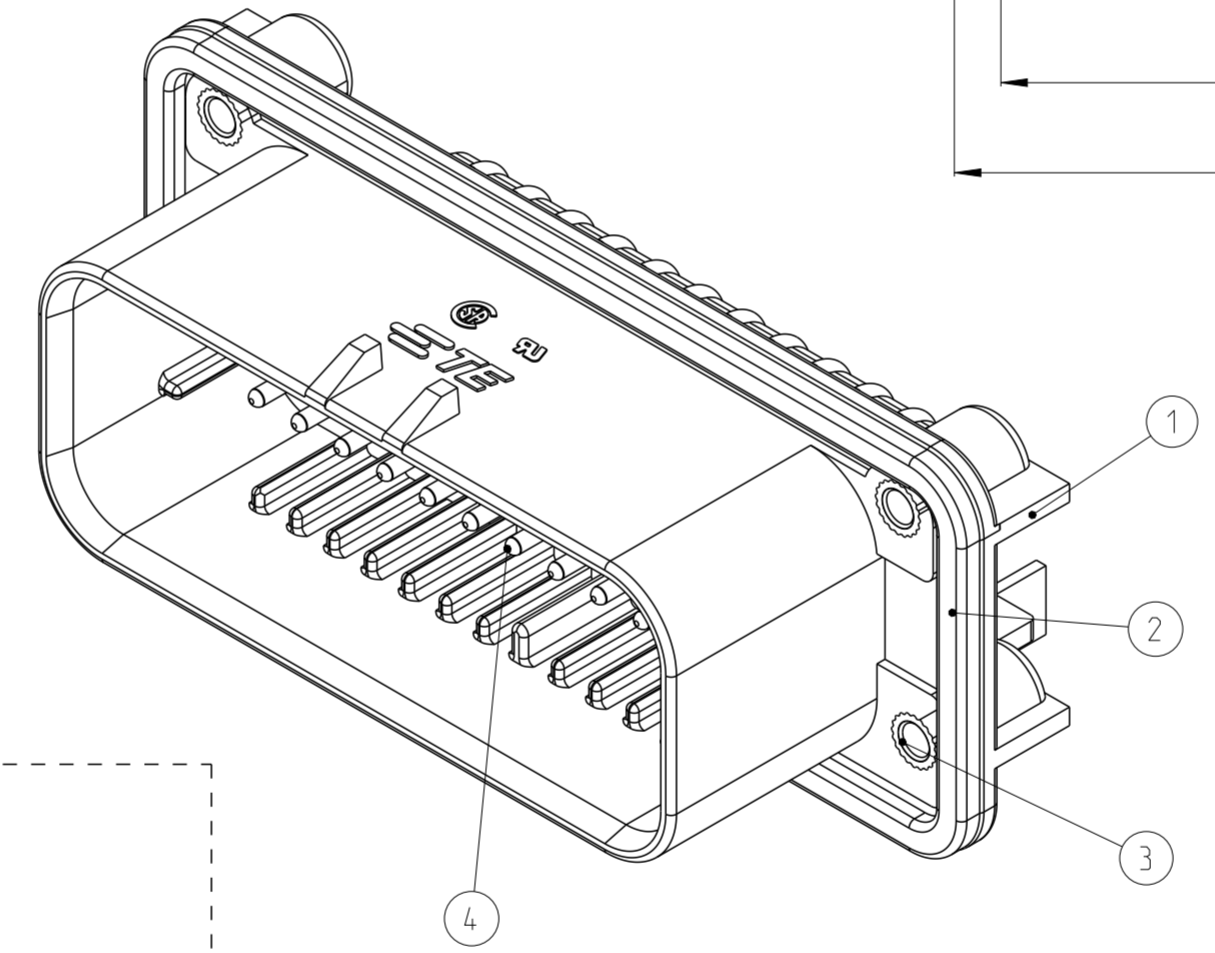
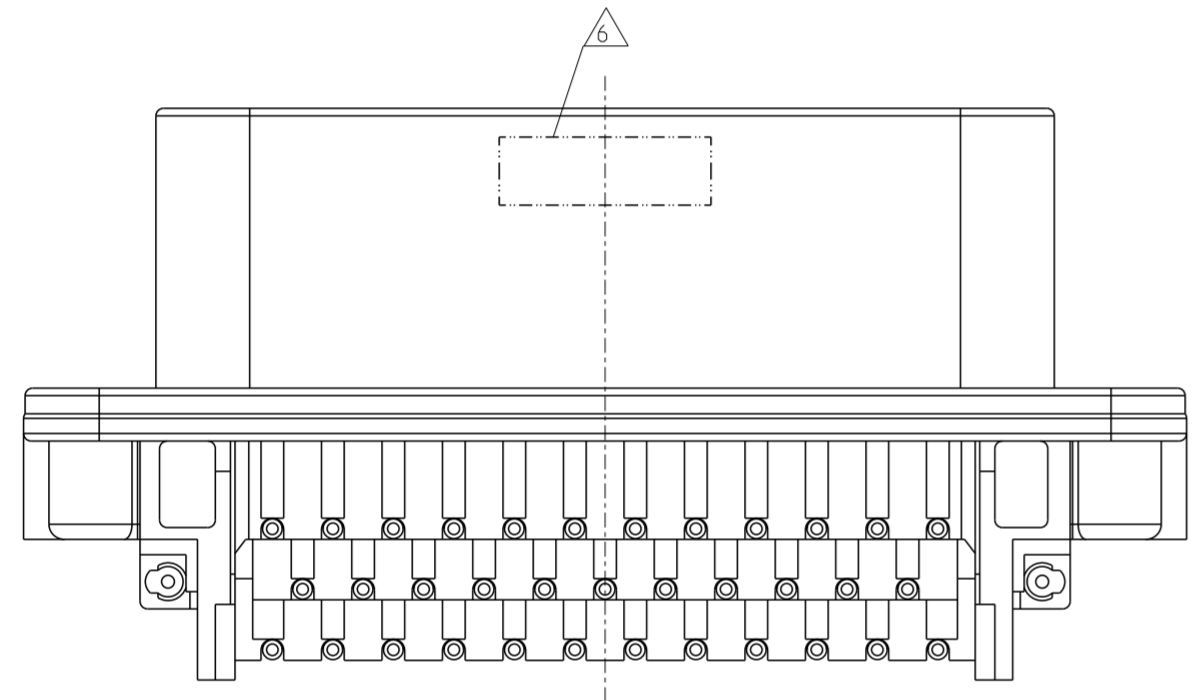
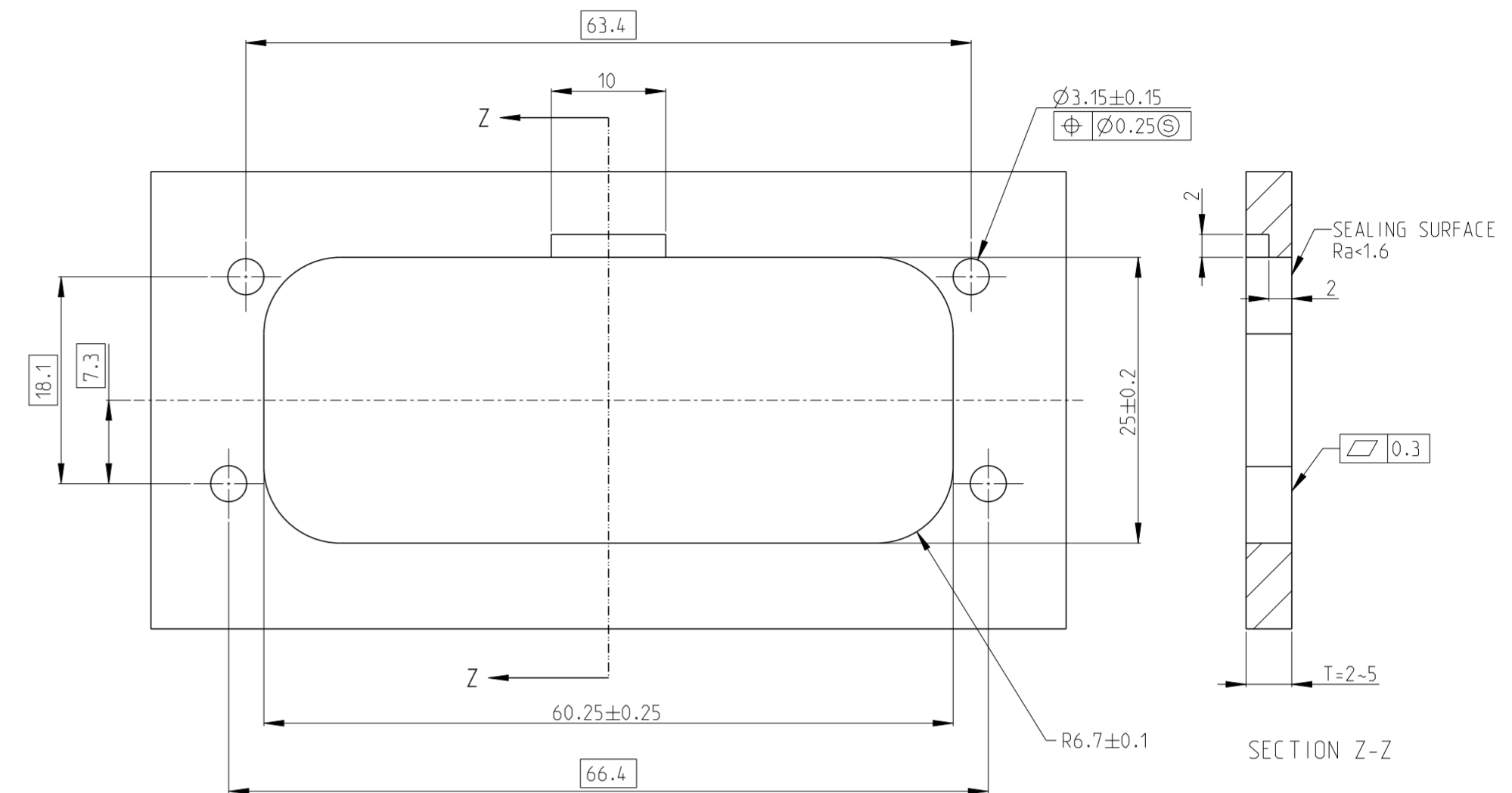
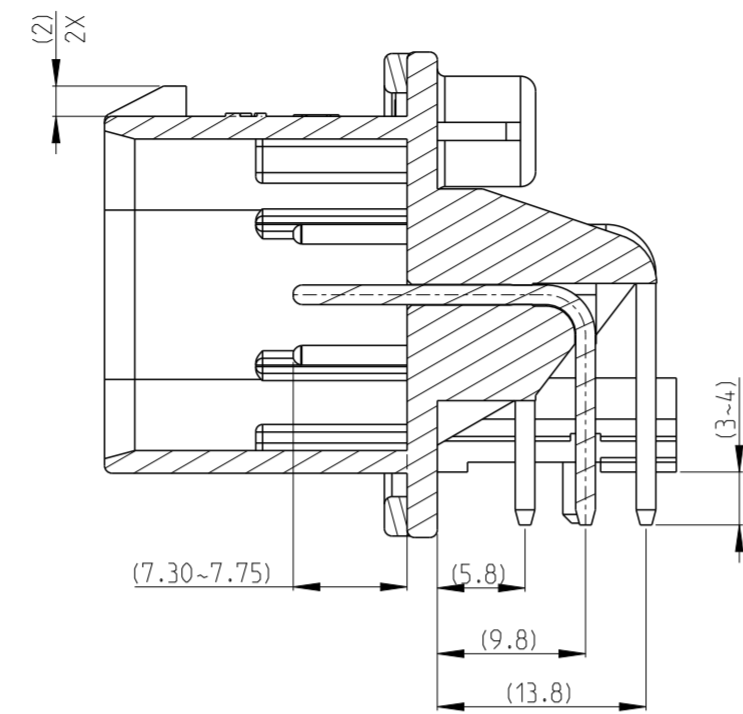
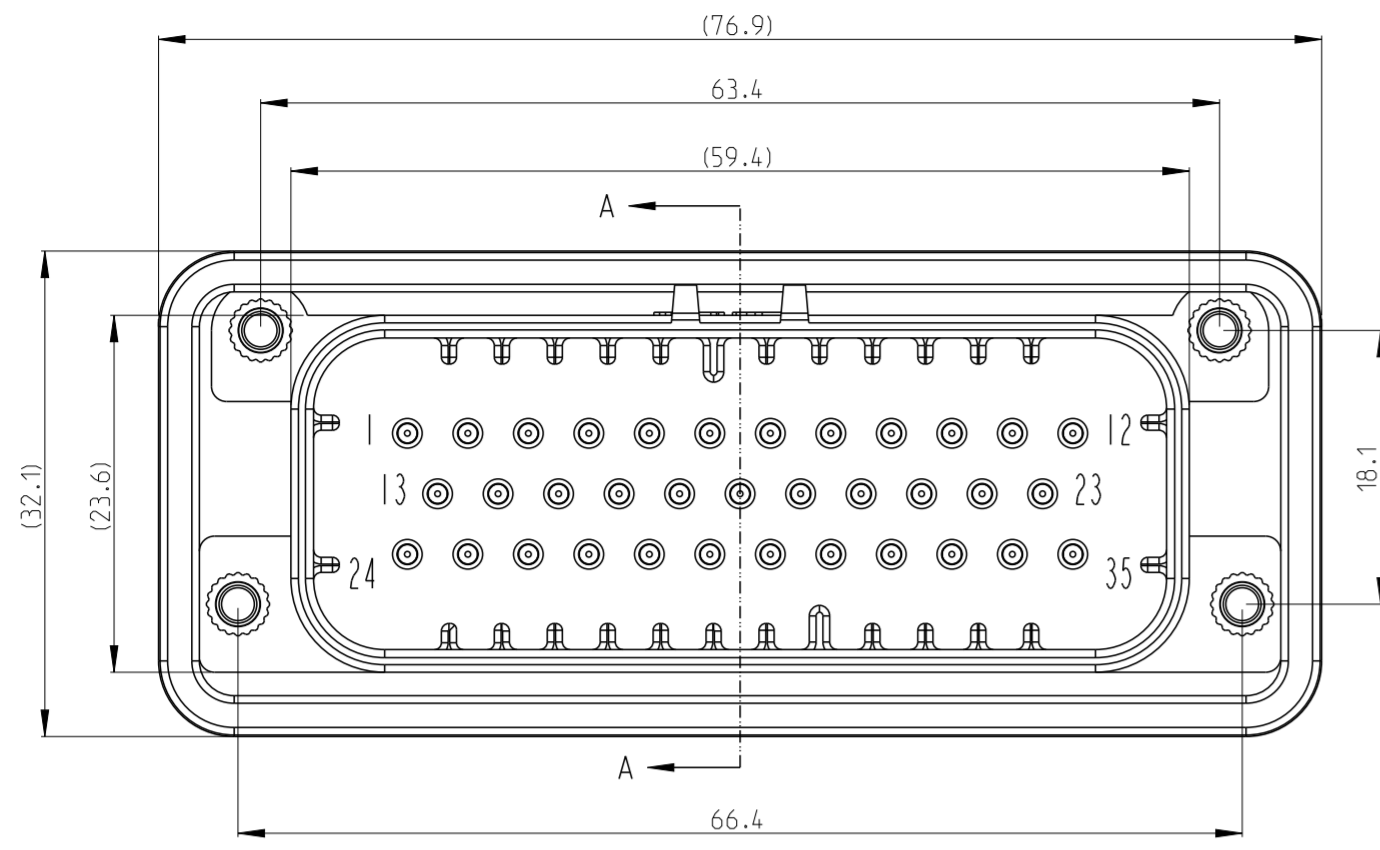
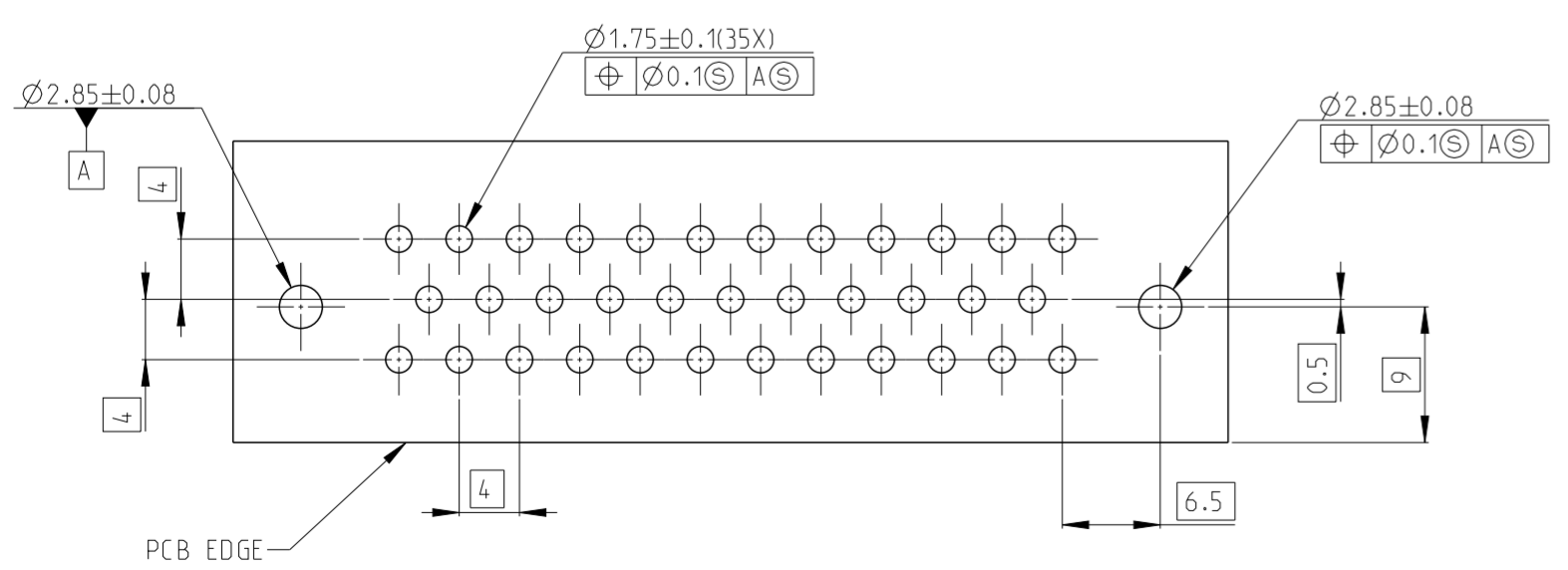


P	LTR	DESCRIPTION	DATE	DWN	APVD
A		INITIAL RELEASE	08JUL2024	J.G	Z.Z
A1		ECN-26-375673	30MAR2026	J.G	C.W



- 1 MATERIAL: SEE BELOW TABLE
- 2. RECOMMEND MOUNTING SCREW: M3XL(L=5+T).
T=THICKNESS OF PANEL
- 3. SCREW TORQUE: 0.6~0.8Nm. ACCORDING TO SCREW TYPE AND ASSEMBLY PROCESS. CUSTOMER SHOULD VERIFY THE ACTUAL MOUNTING TORQUE.
- 4. NO DEFINED DIMENSIONS ACCORDING TO 3D MODEL
- 5. MATED WITH TE PLUG: 776164-1
- 6 D/C IN THIS LOCATION USING 5 DIGIT CODE
FIRST 2 DIGITS = YEAR
SECOND 2 DIGITS = WEEK
LAST DIGIT = DAY
- 7. RECOMMENDED WAVE SOLDER PROCESS: 260°C(MAX.) FOR 3-5S MAX.

RECOMMENDED PCB LAYOUT



QTY	DESCRIPTION	MATERIAL	FINISH/COLOR	ITEM	
35	GOLD PLATED	BRASS	PIN	4	
35	TIN PLATED	BRASS	PIN	4	
4	Zn-Ni PLATED	STEEL	BUSHING(M3)	3	
1	NA	SILICONE	GASKET	2	
1	BLACK	PBT GF30	35P HOUSING	1	
1-2489009-1	2489009-1	FINISH/COLOR	MATERIAL	DESCRIPTION	ITEM

THIS DRAWING IS A CONTROLLED DOCUMENT.

DWN	J.GU	08JUL2024
CHK	C.WAN	08JUL2024
APVD	Z.ZHOU	08JUL2024

TE Connectivity

NAME: AMPSEAL 35P WITH BUSHING

SIZE: A2 CAGE CODE: 00779 DRAWING NO: C-2489009 RESTRICTED TO: -

SCALE: 1:1 SHEET: 1 OF 1 REV: A1

PRODUCT SPEC: 108-1329
APPLICATION SPEC: 114-161142

MATERIAL: - FINISH: - WEIGHT: -

CUSTOMER DRAWING