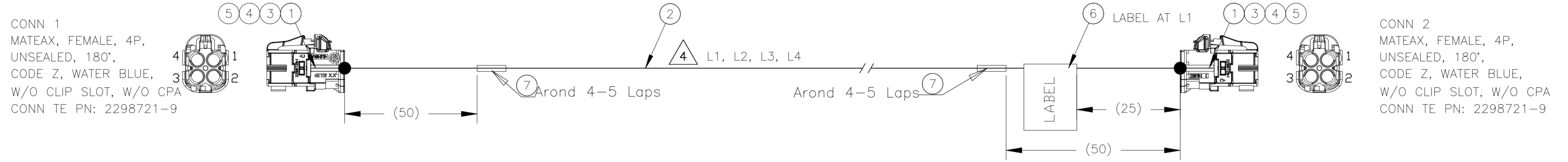


REVISIONS					
P	LTR	DESCRIPTION	DATE	DWN	APVD
B		REVISED AS PER ECN-25-360085	09DEC2025	YS	WZ



TE P/N	L1(mm)	L2(mm)	L3(mm)	L4(mm)
2081392-1	300 ⁺¹⁰	300 ⁺¹⁰	300 ⁺¹⁰	300 ⁺¹⁰
2081392-2	600 ⁺¹⁰	600 ⁺¹⁰	600 ⁺¹⁰	600 ⁺¹⁰
2081392-3	1000 ⁺¹⁵	1000 ⁺¹⁵	1000 ⁺¹⁵	1000 ⁺¹⁵
2081392-4	2000 ⁺²⁰	2000 ⁺²⁰	2000 ⁺²⁰	2000 ⁺²⁰
2081392-5	3000 ⁺³⁰	3000 ⁺³⁰	3000 ⁺³⁰	3000 ⁺³⁰
2081392-6	5000 ⁺⁵⁰	5000 ⁺⁵⁰	5000 ⁺⁵⁰	5000 ⁺⁵⁰
2081392-7	10000 ⁺¹⁰⁰	10000 ⁺¹⁰⁰	10000 ⁺¹⁰⁰	10000 ⁺¹⁰⁰

WIRE FROM		WIRE TO		LENGTH(mm)	CABLE TYPE
CONN 1	CAV 1	CONN 2	CAV 1	L1	RTK031
CONN 1	CAV 2	CONN 2	CAV 2	L2	RTK031
CONN 1	CAV 3	CONN 2	CAV 3	L3	RTK031
CONN 1	CAV 4	CONN 2	CAV 4	L4	RTK031

NOTE:

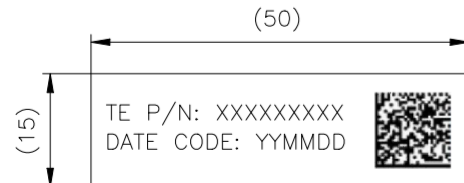
- All CONNECTOR CRIMPING AND ASSEMBLY SHALL BE MADE PER TE SPECIFICATION 114-94413, THE LATEST VERSION SHALL BE USED UNLESS SPECIFIED OTHERWISE
 - 1.1: SOCKET/PIN CONTACT CRIMP HEIGHT
 - ☒ 1.2: FERRULE CRIMP HEIGHT
 - 1.3: CONTACT POSITION(CONCENTRICITY)
 - ☒ 1.4: CONNECTORS TO COAX CABLE RETENTION FORCE
- 100% ONLINE ELECTRICAL TEST ACCORDING TO TE SPECIFICATION 108-18857
 - 2.1: 100% POINT TO POINT CONTINUITY TEST FOR EACH CENTER CONTACT AND OUTER CONDUCTOR, NO OPEN, NO SHORT
 - 2.2: HIGHT VOLTAGE TEST: NO BREAKDOWN AT 800V AC 100MS, MAX 1.5mA
 - 2.3: INSULATION RESISTANCE TEST: 100MΩ MIN AT 500V DC 100MS
 - 2.4: CONNECTING RESISTANCE: MAX 5 OHM
- PRODUCT SPECIFICATION: 108-94515,
 - ⚠ MEASUREMENT BASED ON STRAIGHT CABLE



5. TEMPERATURE RANGE: -40°C TO 105°C

⚠ WIRE POSITION SEE BESIDE TABLE

7. LABEL INFORMATION SEE BELOW



BAR CODE: XXXXXXXX~YYMDDNXXXXXX

- SEQUENCE NUMBER: 6 DIGITALS, STARTED FROM 000001
- SHIFT INFORMATION: "D" DAY OR "N": NIGHT
- MANUFACTURE DATE:
YY: Last digital of the year; MM: Month; DD: Day
- SEPARATOR
- TE PART NUMBER

0.4m	0.4m	0.4m	0.4m	0.4m	0.4m	0.4m	Tesa 51618 TAPE	7
1 PCS	1 PCS	1 PCS	1 PCS	1 PCS	1 PCS	1 PCS	LABLE 15*50	6
8 PCS	8 PCS	8 PCS	8 PCS	8 PCS	8 PCS	8 PCS	FERRULE, MATEAX, RTK031	5
8 PCS	8 PCS	8 PCS	8 PCS	8 PCS	8 PCS	8 PCS	MATE-AX,SOC OTR TRMNL,180DEG,RTK031	4
8 PCS	8 PCS	8 PCS	8 PCS	8 PCS	8 PCS	8 PCS	CENTER CONTACT, MATEAX, FEMALE, RTK031	3
10.0m*4	5.0m*4	3.0m*4	2.0m*4	1.0m*4	0.6m*4	0.3m*4	COAXIAL CABLE 50 OHM RTK031 105°C	2
2 PCS	2 PCS	2 PCS	2 PCS	2 PCS	2 PCS	2 PCS	MATEAX, FEMALE, UNSEALED, LOCAL, 4P, 180°, W/O CLIP SLOT, CODE Z, WATER BLUE, 2298721-9	1
2081392-7	2081392-6	2081392-5	2081392-4	2081392-3	2081392-2	2081392-1	DESCRIPTION	ITEM

THIS DRAWING IS A CONTROLLED DOCUMENT.

DWN	ED	24MAR2023
CHK	RZ	24MAR2023
APVD	WH	24MAR2023

TE Connectivity

MATE AX STR Female TO MATE AX STR Female, WITH RTK031 CABLE,Z CODE

SIZE	CAGE CODE	DRAWING NO	RESTRICTED TO
A2	00779	C=2081392	-

CUSTOMER DRAWING

SCALE	SHEET	REV
-	1 OF 1	B