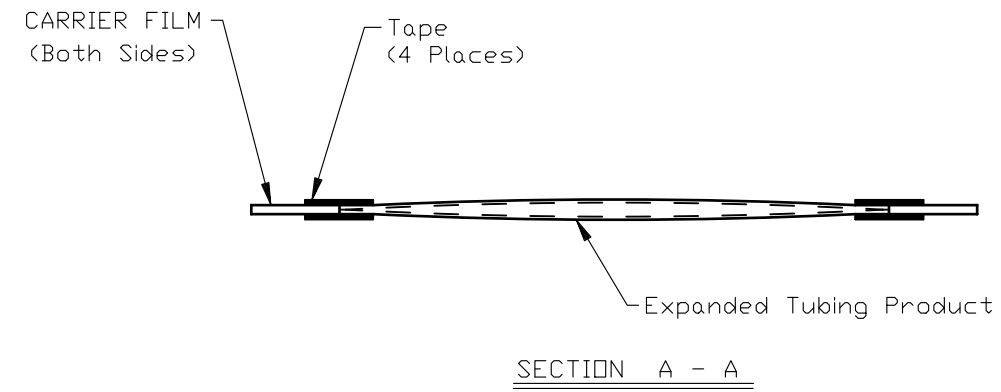
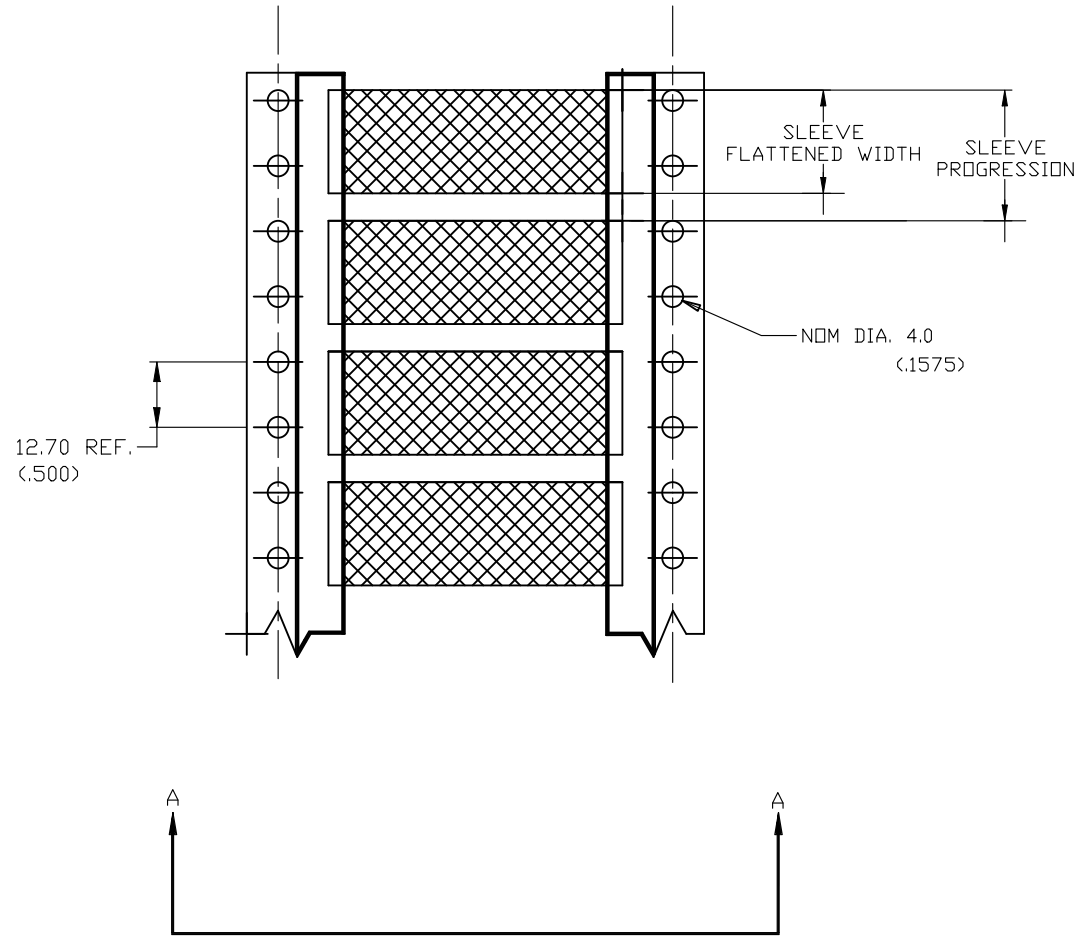
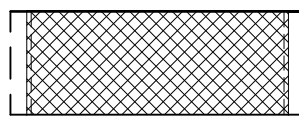


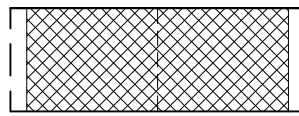
P	LTR	DESCRIPTION	DATE	DWN	APVD
	F2	REVISED PER ECR-25-260387, note added	27OCT2025	AFK	LS



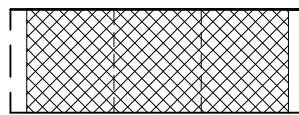
SCORING OPTIONS



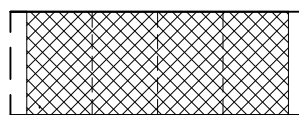
SIDE SCORE



S1



S2



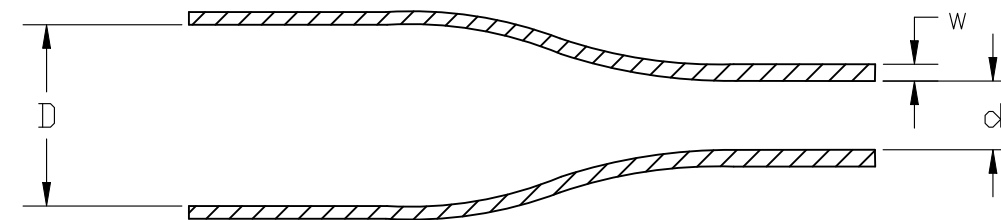
S3

NOTE:  
1. SIDE SCORE ALSO AVAILABLE WITH S1, S2, & S3

Product Size	3/32	1/8	3/16	1/4	3/8	1/2	3/4	1	1-1/2	2	2-1/4
Minimum Sleeve Flattened Width	4.32 (.170)	5.84 (.230)	8.00 (.315)	10.7 (.420)	15.5 (.610)	20.4 (.803)	30.5 (1.200)	40.4 (1.590)	60.3 (2.37)	80.0 (3.15)	88.9 (3.50)
Nominal Sleeve Progression	12.70 (.500)	12.70 (.500)	12.70 (.500)	16.94 (.667)	25.40 (1.000)	29.64 (1.167)	42.34 (1.667)	50.80 (2.00)	71.96 (2.83)	101.60 (4.00)	101.60 (4.00)
"D" Minimum Supplied I.D.	2.36 (.093)	3.18 (.125)	4.75 (.187)	6.35 (.250)	9.53 (.375)	12.70 (.500)	19.05 (.750)	25.40 (1.00)	38.10 (1.50)	50.80 (2.00)	57.15 (2.25)
"d" Maximum Recovered I.D.	0.79 (.031)	1.07 (.042)	1.57 (.062)	2.11 (.083)	3.18 (.125)	4.22 (.166)	6.35 (.250)	8.46 (.333)	19.05 (.750)	25.40 (1.00)	19.05 (.750)
"w" Recovered wall ±0.08 (.003)	0.58 (.023)	0.58 (.023)	0.58 (.023)	0.58 (.023)	0.61 (.024)	0.61 (.024)	0.61 (.024)	0.64 (.025)	0.51 (.020)	0.64 (.025)	0.76 (.030)

DIMENSIONS IN mm (inches)

△ THESE SIZES ARE 2:1 SHRINK RATIO, ALL OTHER ARE 3:1



THIS DRAWING IS A CONTROLLED DOCUMENT.		DWN AFK	08NOV2013	<b>STE</b> TE Connectivity	
DIMENSIONS: mm		CHK -	APVD -		
TOLERANCES UNLESS OTHERWISE SPECIFIED:		PRODUCT SPEC -		APPLICATION SPEC -	
0 PLC ± -		APPLIC. SPEC -		SIZE A3	CAGE CODE 06090
1 PLC ± -		WEIGHT -		DRAWING NO	RESTRICTED TO -
2 PLC ± -		CUSTOMER DRAWING		G=MCD160002	
3 PLC ± -		SCALE 1:1		SHEET 1 OF 1	REV F2
4 PLC ± -					
ANGLES ± -					
FINISH -					
CROSSLINKED POLYOLEFIN					