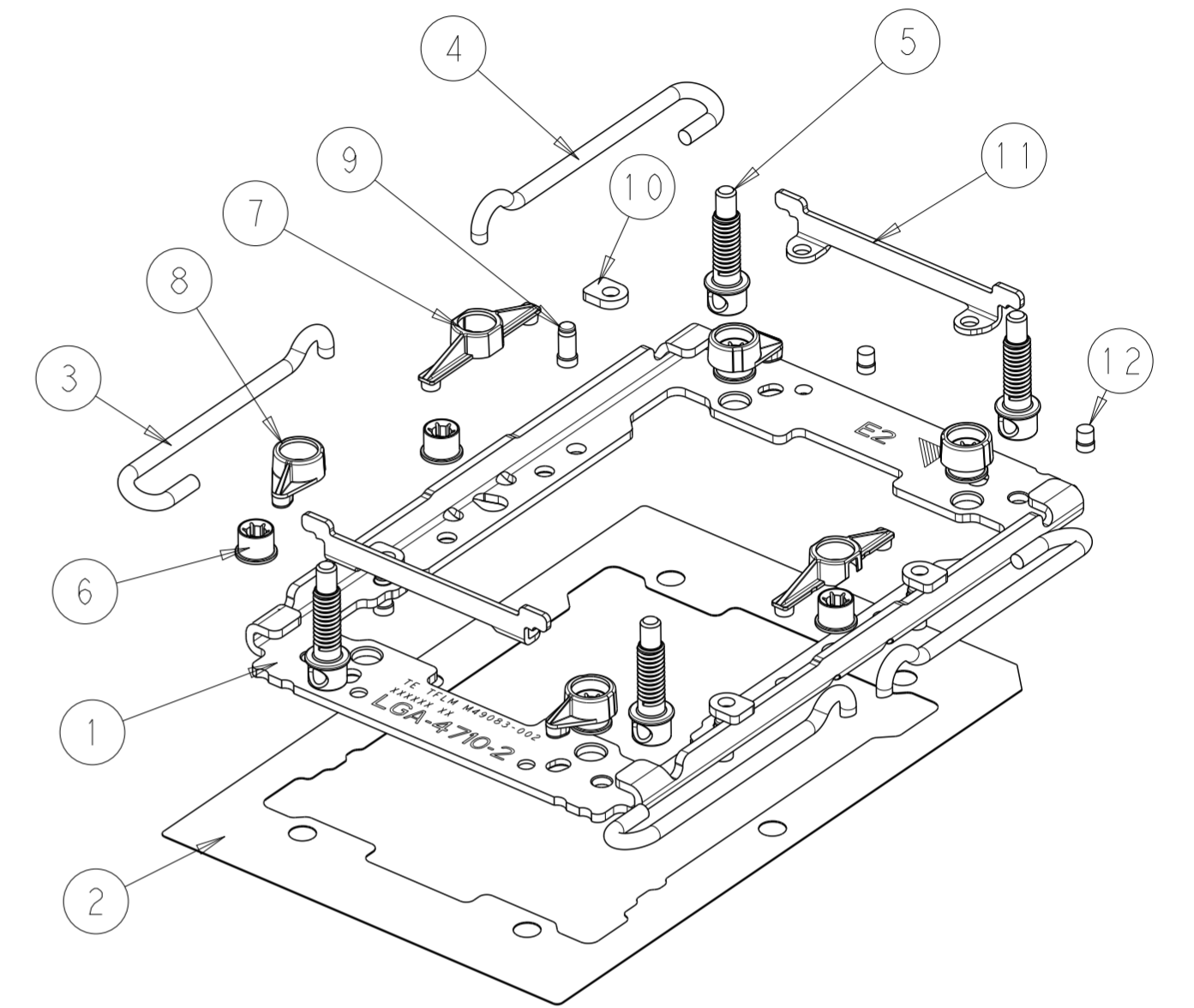
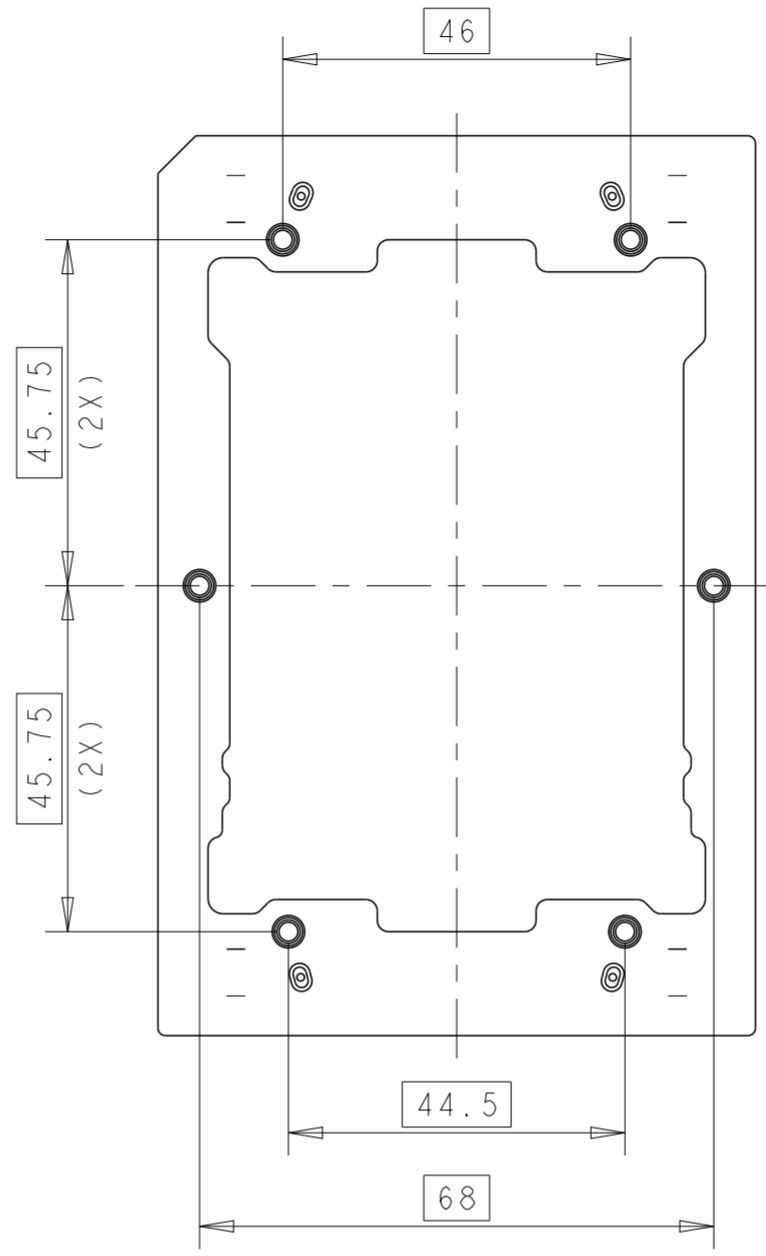
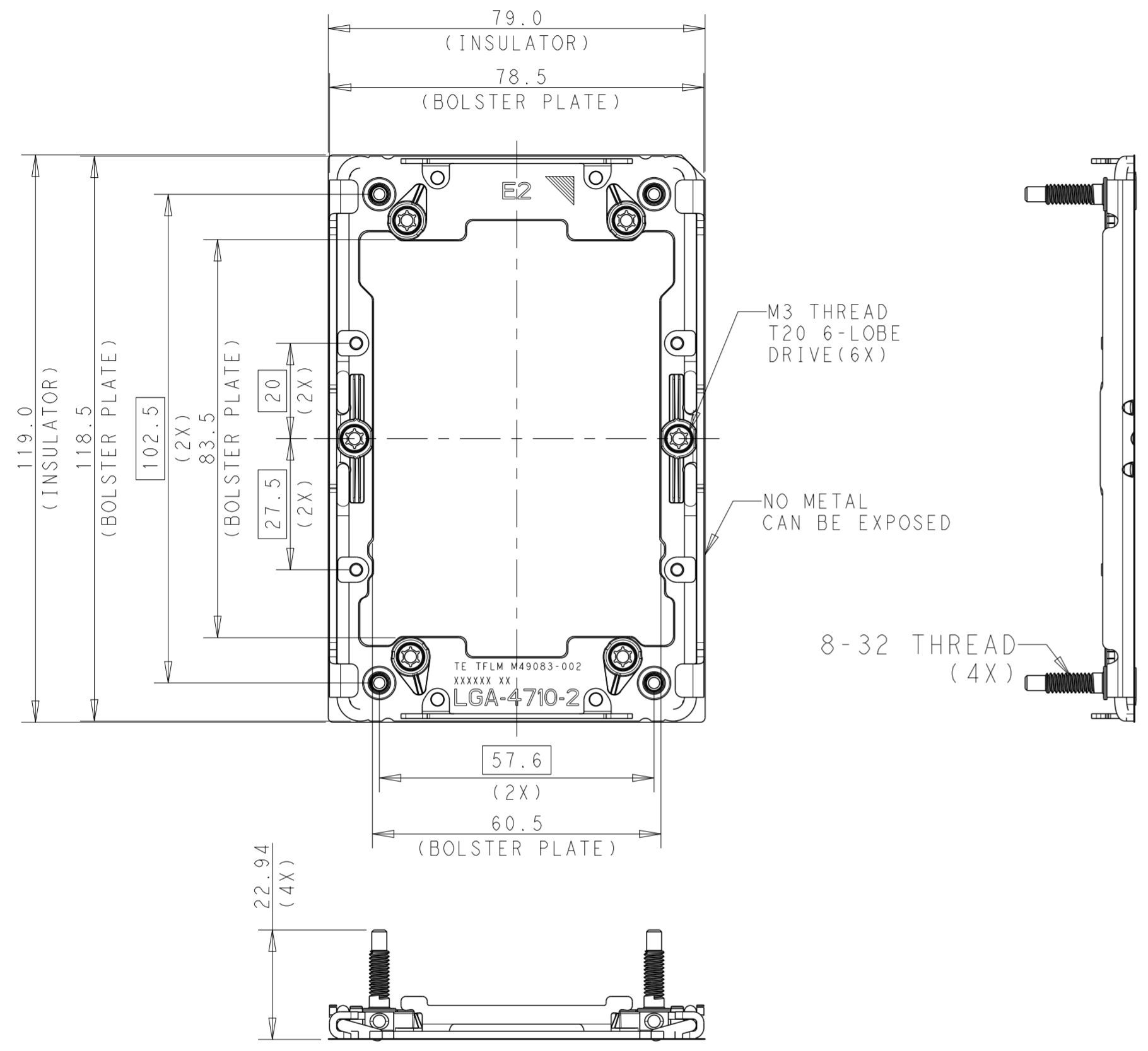


THIS DRAWING IS UNPUBLISHED. RELEASED FOR PUBLICATION
 © COPYRIGHT copyright dbTe- ALL RIGHTS RESERVED.

REVISIONS					
P	LTR	DESCRIPTION	DATE	DWN	APVD
	A	RELEASED	18MAR2024	J.W	S.L
	A1	ECN-25-305760	11FEB2025	BTV	KJ

P/N: 2405568-1/-3 AS SHOW



NOTES:

1. MATERIAL:
 - ① BHS-SP TFLM BOLSTER PLATE: STAINLESS STEEL
 - ② BHS-SP TFLM BOLSTER INSULATOR: -POLYCARBONATE FILM PLUS ACRYLIC ADHESIVE LAYER, UL94V-0
 - ③ EGS TFLM SPRING-1: MUSIC WIRE, NICKEL PLATING
 - ④ EGS TFLM SPRING-2: MUSIC WIRE, NICKEL PLATING
 - ⑤ ICX TFLM SPRING STUD: STAINLESS STEEL
 - ⑥ ICX TFLM M3 NUT : CARBON STEEL, NICKEL PLATING
 - ⑦ EGS TFLM NUT CAP-SIDE: THERMO-PLASTIC, UL94V-0, GREY
 - ⑧ ICX TFLM NUT CAP: THERMO-PLASTIC, UL94V-0, GREY
 - ⑨ EGS TFLM WIRE STOP PIN: STAINLESS STEEL
 - ⑩ EGS TFLM WIRE RETENTION SHIM: STAINLESS STEEL
 - ⑪ BHS-SP ANTI-TILT HOOK BRACKET: STAINLESS STEEL
 - ⑫ BHS-SP DOUBLE FLUSH RIVET: STAINLESS STEEL
2. ASSEMBLED WITH BACKPLATE ASSEMBLY P/N: 2405569 SERIES
3. INDICATED DATE CODE ON THE BOLSTER PLATE

Q'TY	DESCRIPTION	ITEM
4	BHS-SP DOUBLE FLUSH RIVET	12
2	BHS-SP ANTI-TILT HOOK BRACKET	11
4	EGS TFLM WIRE RETENTION SHIM	10
4	EGS TFLM WIRE STOP PIN	9
4	ICX TFLM NUT CAP, GREY	8
2	EGS TFLM SIDE NUT CAP	7
6	ICX TFLM M3 NUT	6
4	ICX TFLM SPRING STUD	5
2	EGS TFLM SPRING-2	4
2	EGS TFLM SPRING-1	3
1	BHS-SP TFLM BOLSTER INSULATOR	2
1	BHS-SP TFLM BOLSTER PLATE	1

THIS DRAWING IS A CONTROLLED DOCUMENT.

DWN	JEFF WANG	28FEB2022
CHK	JEFF WANG	28FEB2022
APVD	SIMON LI	28FEB2022
PRODUCT SPEC	108-115173	
APPLICATION SPEC	114-115032	
WEIGHT	-	
CUSTOMER DRAWING	SCALE	1:4

TE Connectivity

NAME: LGA4710-2 SOCKET
SOCKET E2 TFLM ASSEMBLY

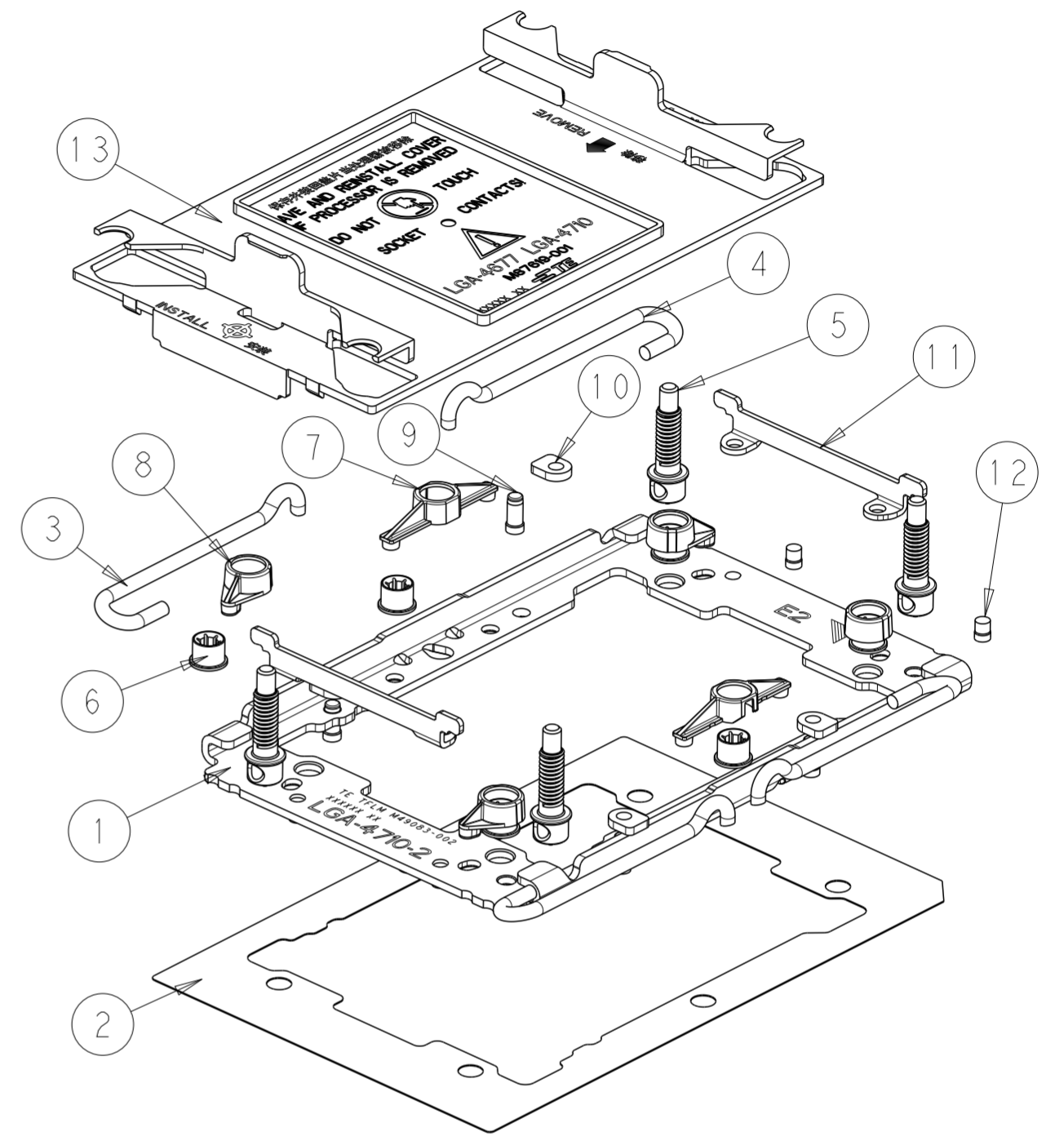
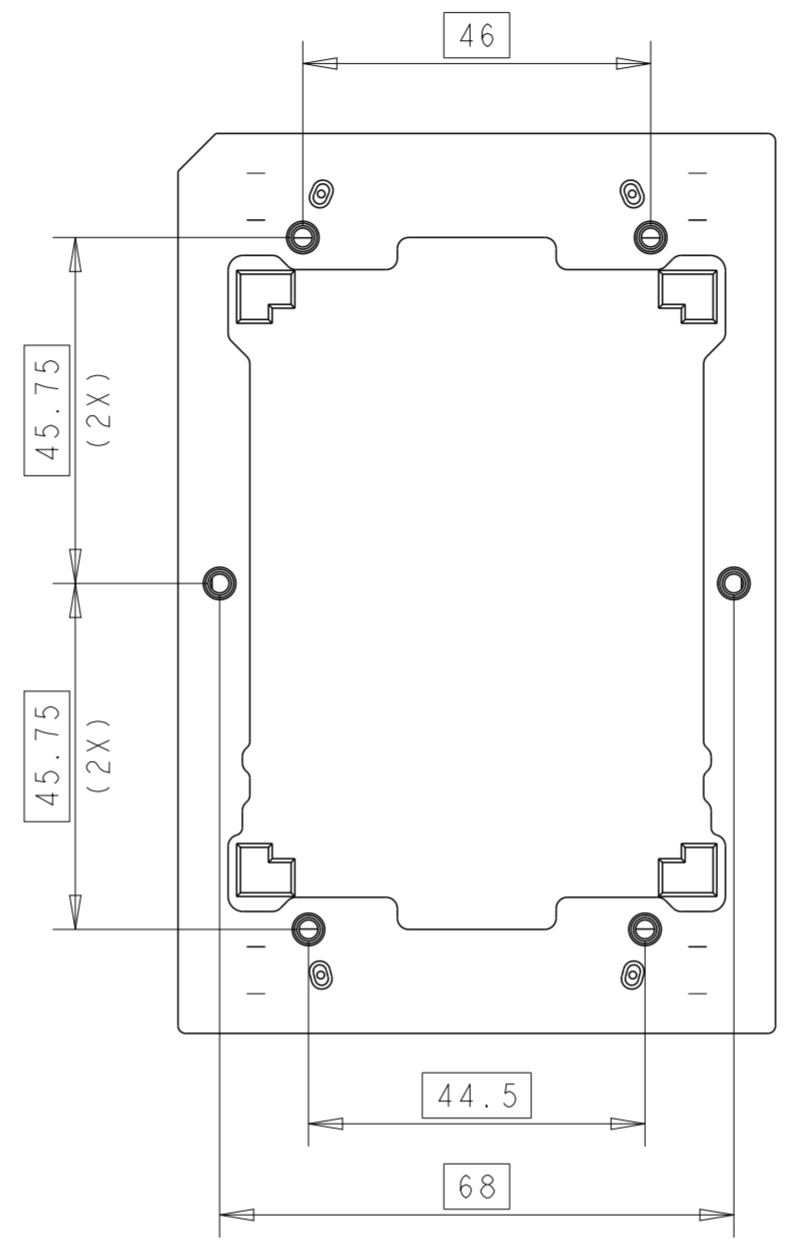
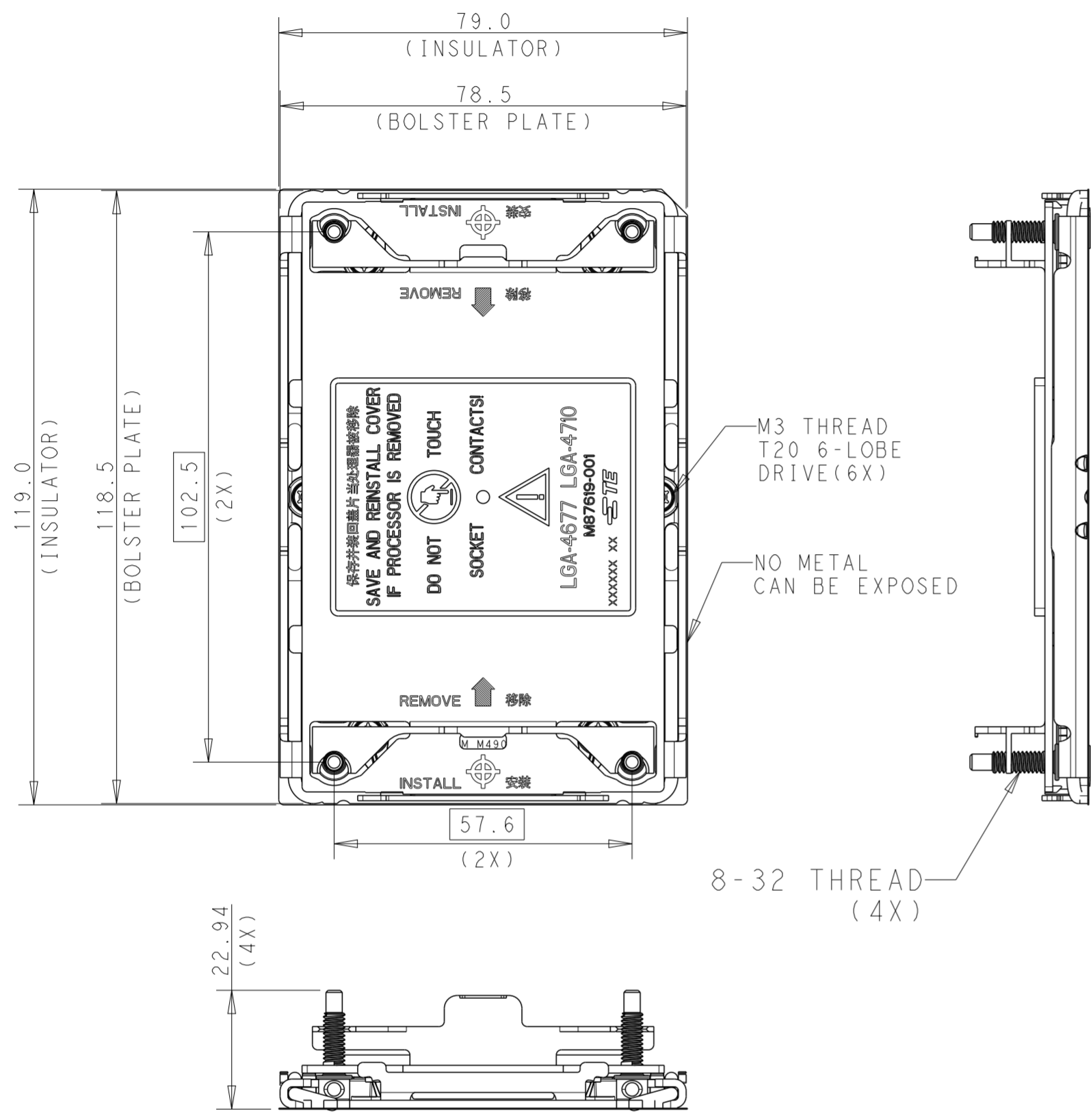
SIZE: A2 CAGE CODE: 00779 DRAWING NO: C-2405568 RESTRICTED TO: -

SHEET 1 OF 4 REV A1

THIS DRAWING IS UNPUBLISHED. RELEASED FOR PUBLICATION
 © COPYRIGHT copyright.d8Te- ALL RIGHTS RESERVED.

REVISIONS					
P	LTR	DESCRIPTION	DATE	DWN	APVD
		SEE SHEET 1			

P/N: 2405568-2/-4 AS SHOW



1	E1/E2 UNIVERSAL SOCKET COVER	13
4	BHS-SP DOUBLE FLUSH RIVET	12
2	BHS-SP ANTI-TILT HOOK BRACKET	11
4	EGS TFLM WIRE RETENTION SHIM	10
4	EGS TFLM WIRE STOP PIN	9
4	ICX TFLM NUT CAP, GREY	8
2	EGS TFLM SIDE NUT CAP	7
6	ICX TFLM M3 NUT	6
4	ICX TFLM SPRING STUD	5
2	EGS TFLM SPRING-2	4
2	EGS TFLM SPRING-1	3
1	BHS-SP TFLM BOLSTER INSULATOR	2
1	BHS-SP TFLM BOLSTER PLATE	1
Q'TY	DESCRIPTION	ITEM

NOTES:

- MATERIAL:
 - BHS-SP TFLM BOLSTER PLATE: STAINLESS STEEL
 - BHS-SP TFLM BOLSTER INSULATOR: -POLYCARBONATE FILM PLUS ACRYLIC ADHESIVE LAYER, UL94V-0
 - EGS TFLM SPRING-1: MUSIC WIRE, NICKEL PLATING
 - EGS TFLM SPRING-2: MUSIC WIRE, NICKEL PLATING
 - ICX TFLM SPRING STUD: STAINLESS STEEL
 - ICX TFLM M3 NUT: CARBON STEEL, NICKEL PLATING
 - EGS TFLM NUT CAP-SIDE: THERMO-PLASTIC, UL94V-0, GREY
 - ICX TFLM NUT CAP: THERMO-PLASTIC, UL94V-0, GREY
 - EGS TFLM WIRE STOP PIN: STAINLESS STEEL
 - EGS TFLM WIRE RETENTION SHIM: STAINLESS STEEL
 - BHS-SP ANTI-TILT HOOK BRACKET: STAINLESS STEEL
 - BHS-SP DOUBLE FLUSH RIVET: STAINLESS STEEL
 - BHS SOCKET COVER: PC+ABS, UL94-0, BLACK
- ASSEMBLED WITH BACKPLATE ASSEMBLY P/N: 2405569 SERIES
- BOLSTER ASSY WITH SOCKET COVER, ALL DIMENSION ARE SAME AS THE PN 2405568-1

THIS DRAWING IS A CONTROLLED DOCUMENT.

DWN	JEFF WANG	28FEB2022
CHK	JEFF WANG	28FEB2022
APVD	SIMON LI	28FEB2022
PRODUCT SPEC	108-115173	
APPLICATION SPEC	114-115032	
WEIGHT	-	
CUSTOMER DRAWING		

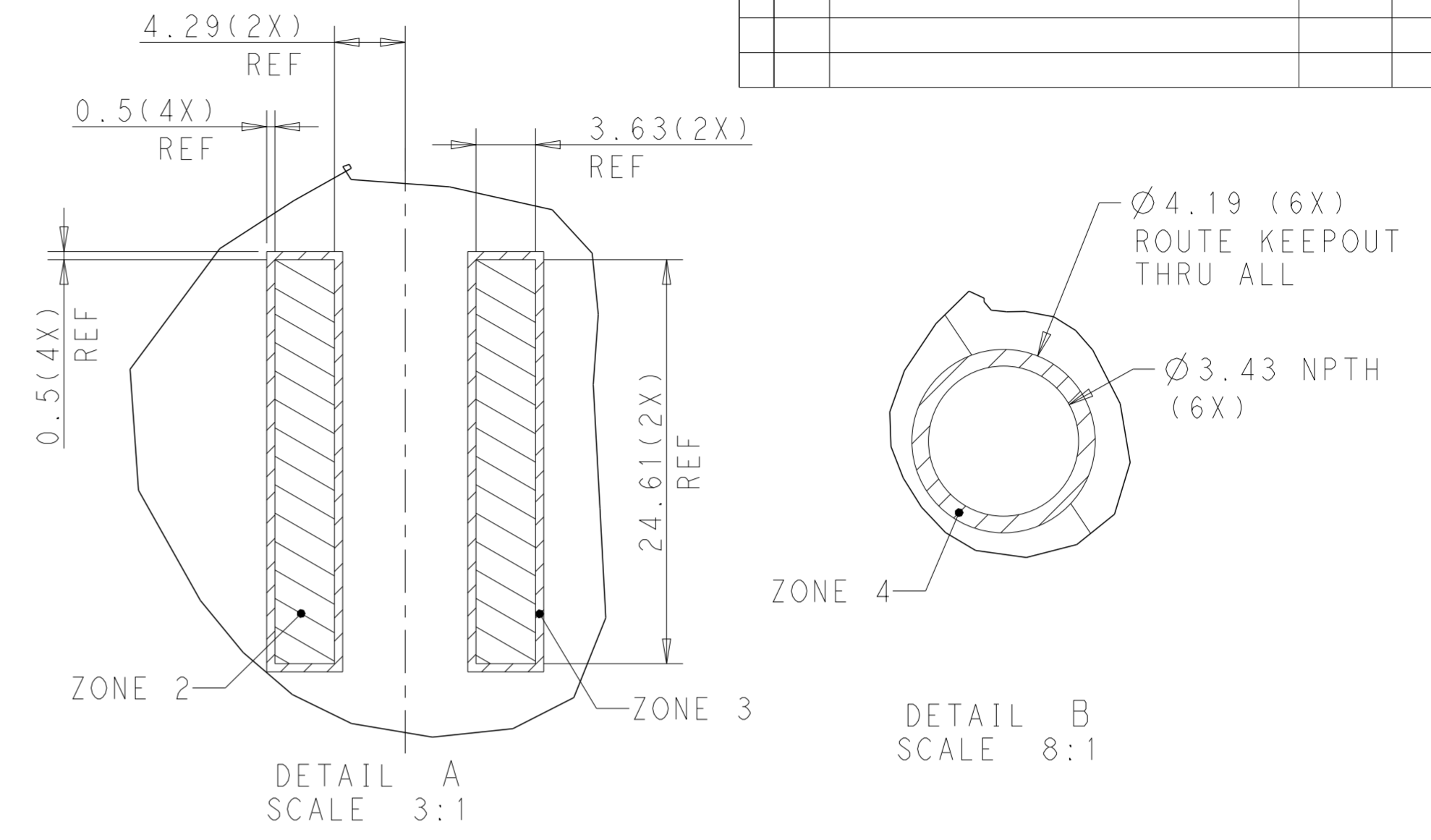
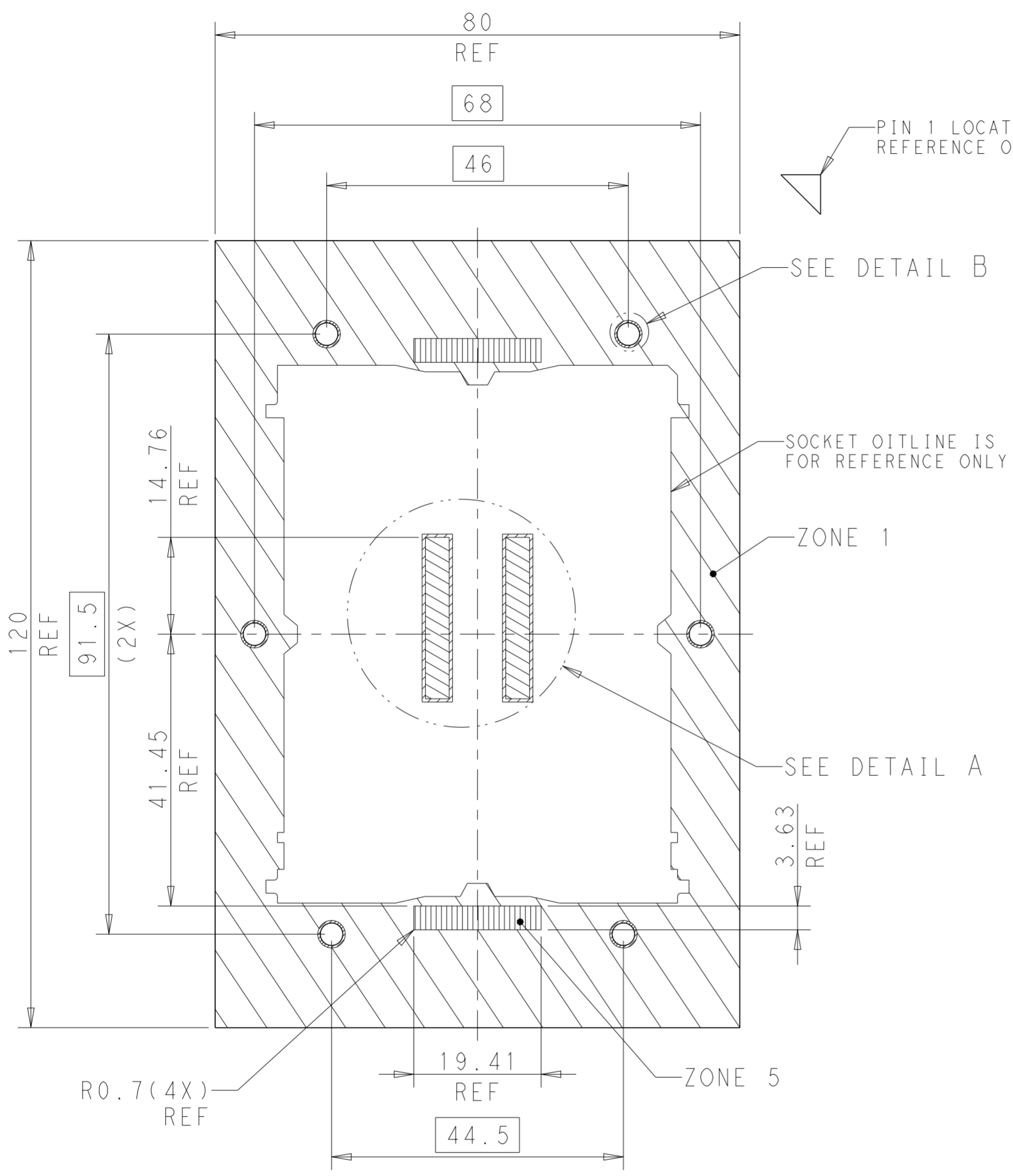
NAME: LGA4710-2 SOCKET SOCKET E2 TFLM ASSEMBLY

SIZE: A2 CAGE CODE: 00779 DRAWING NO: C-2405568 RESTRICTED TO: -

SCALE: 1:4 SHEET: 2 OF 4 REV: A1

THIS DRAWING IS UNPUBLISHED. RELEASED FOR PUBLICATION
 © COPYRIGHT copyright.d8Te- ALL RIGHTS RESERVED.

REVISIONS				
P	LTR	DESCRIPTION	DATE	APVD
		SEE SHEET 1		



KOZ LEGEND	
	ZONE 1: BOLSTER PLATE ZONE, NO OTHER COMPONENT PLACEMENT ALLOWED, 0.0MM HEIGHT RESTRICTION
	ZONE 2: SOCKET CAVITY 1.22 MM MAX HEIGHT RESTRICTION
	ZONE 3: SOCKET CAVITY TO SOCKET ZONE NO COMPONENT PLACEMENT ALLOWED, 0.0MM HEIGHT RESTRICTION
	ZONE 4: NO ROUTE ZONE, THROUGH ALL LAYERS
	ZONE 5: PRIMARY SIDE COMPONENT PLACEMENT ZONE MAX. COMPONENT HEIGHT OF 1.5MM

REFERENCE BOLSTER KEEPOUT ZONE

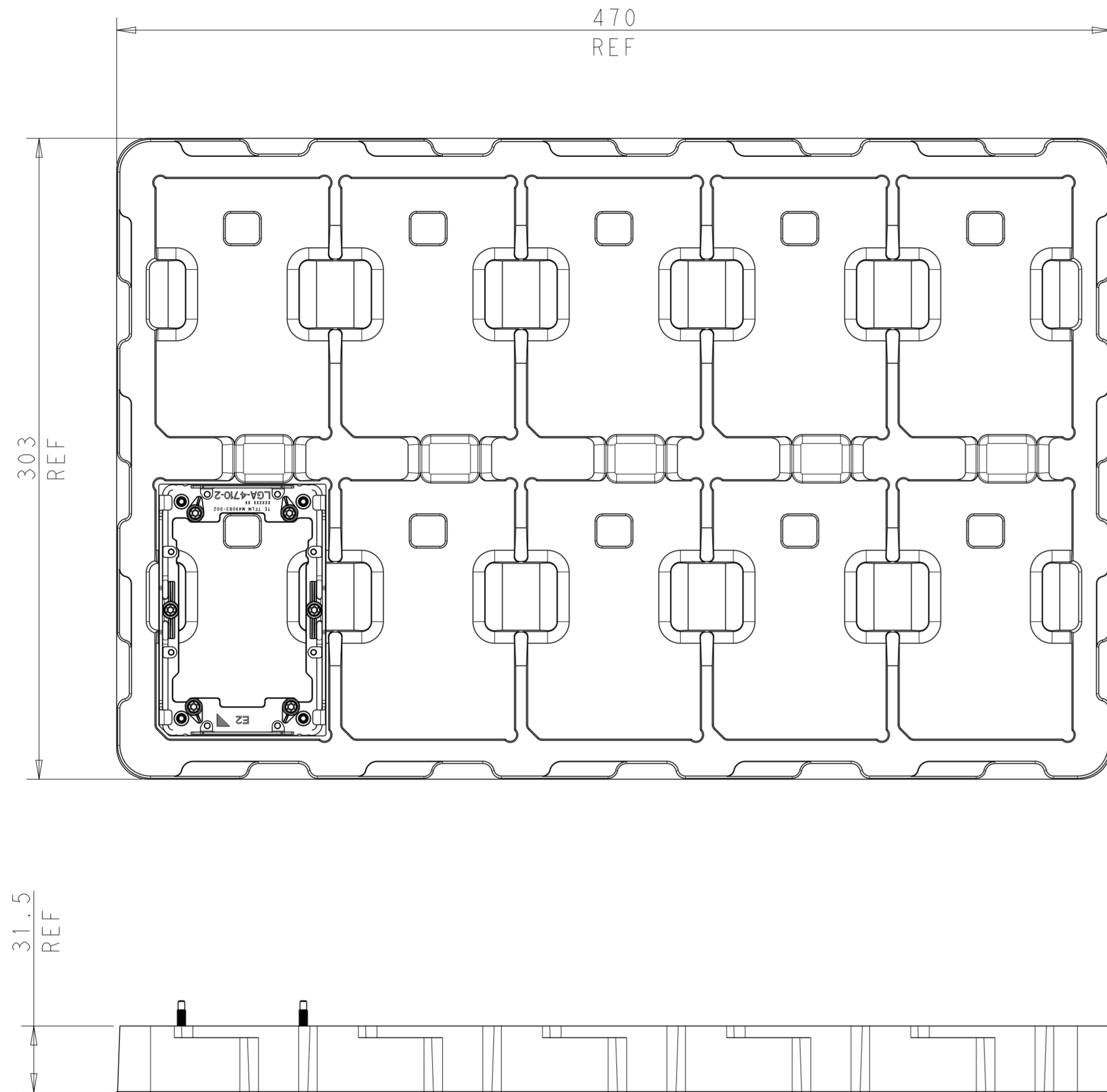
FOR GENERAL BOARD DESIGN, PLEASE REFER TO THE THERMAL AND MECHANICAL DESIGN GUIDELINES PROVIDED BY INTEL

THIS DRAWING IS A CONTROLLED DOCUMENT.		DWN JEFF WANG 28FEB2022	TE Connectivity	
		CHK JEFF WANG 28FEB2022		
DIMENSIONS: mm		APVD SIMON LI 28FEB2022	NAME LGA4710-2 SOCKET SOCKET E2 TFLM ASSEMBLY	
TOLERANCES UNLESS OTHERWISE SPECIFIED: 0 PLC ±0.3 1 PLC ±0.3 2 PLC ±0.3 3 PLC ±0.3 4 PLC ± ANGLES ±3 FINISH -		PRODUCT SPEC -	SIZE A2	CAGE CODE 00779
MATERIAL -		APPLICATION SPEC -	DRAWING NO C-2405568	RESTRICTED TO -
		WEIGHT -	SCALE 1:2	SHEET 3 OF 4
		CUSTOMER DRAWING	REV A1	

THIS DRAWING IS UNPUBLISHED. RELEASED FOR PUBLICATION
 © COPYRIGHT copyright.d8te- ALL RIGHTS RESERVED.

REVISIONS				
P	LTR	DESCRIPTION	DATE	APVD
		SEE SHEET 1		

P/N 2405568-X PACKING AS SHOW



NOTE: PN 2405568-X, 10PCS/TRAY, 80PCS/BOX

THIS DRAWING IS A CONTROLLED DOCUMENT.		DWN JEFF WANG 28FEB2022	TE Connectivity	
DIMENSIONS: mm		CHK JEFF WANG 28FEB2022		
TOLERANCES UNLESS OTHERWISE SPECIFIED: 0 PLC ±0.3 1 PLC ±0.3 2 PLC ±0.3 3 PLC ±0.3 4 PLC ± ANGLES ±3 FINISH -		APVD SIMON LI 28FEB2022	NAME LGA4710-2 SOCKET SOCKET E2 TFLM ASSEMBLY	
MATERIAL -		PRODUCT SPEC -	APPLICATION SPEC -	RESTRICTED TO -
		WEIGHT -	SIZE A2	CAGE CODE 00779
		CUSTOMER DRAWING	DRAWING NO C-2405568	SCALE 1:2
			SHEET 4	OF 4
			REV A1	