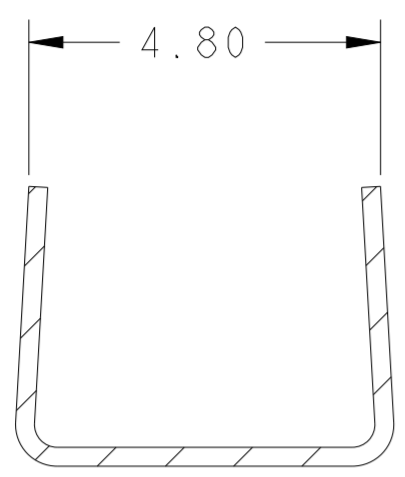


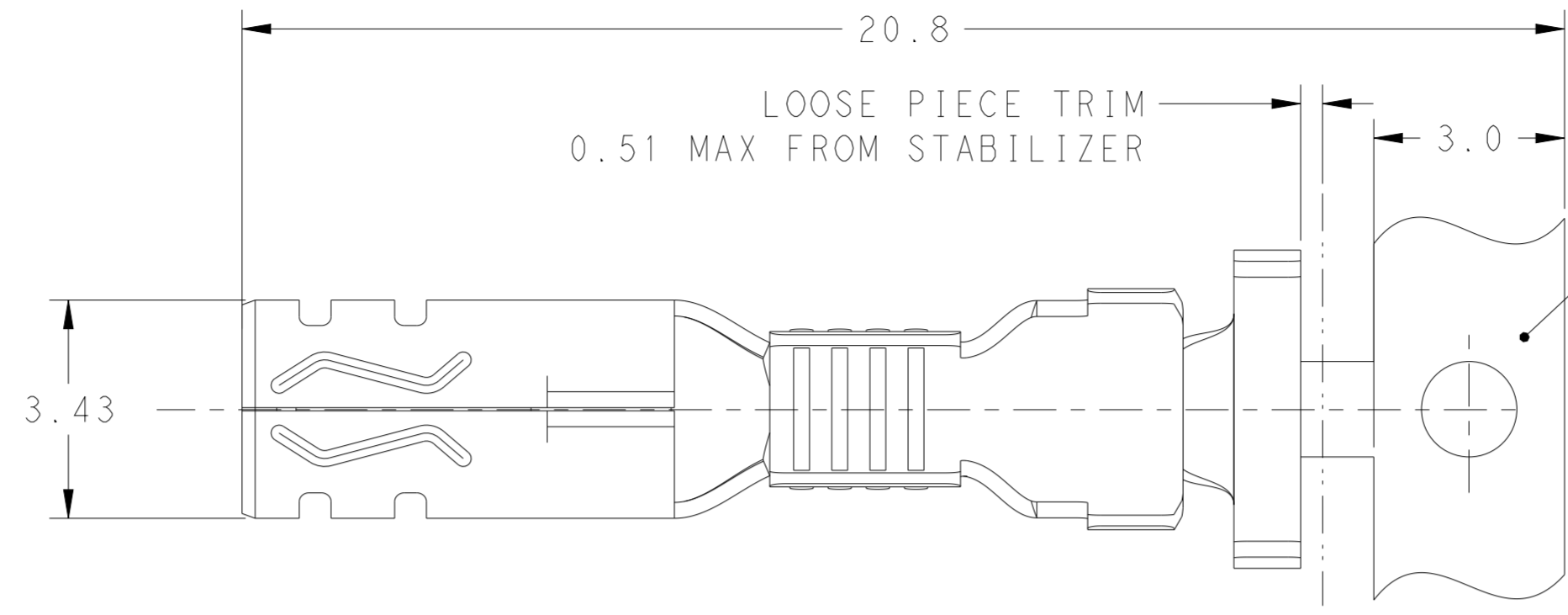
THIS DRAWING IS UNPUBLISHED. RELEASED FOR PUBLICATION 20  
 © COPYRIGHT 20 BY - ALL RIGHTS RESERVED.

LOC ES DIST 00

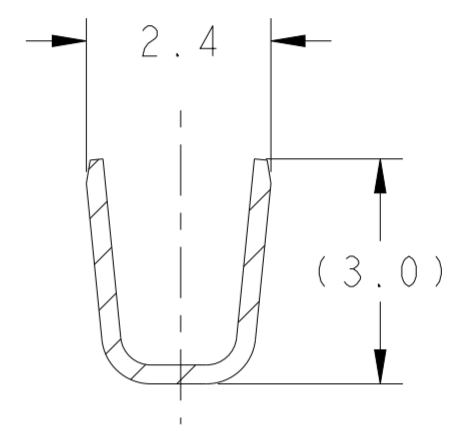
REVISIONS					
P	LTR	DESCRIPTION	DATE	DWN	APVD
E		REVISED PER ECR-21-100678	08APR2021	SS	VS
F		REVISED PER ECR-23-182543	27JUL2023	SKR	DS
G		REVISED PER ECR-25-236464	19MAR2025	SKR	JP
H		REVISED PER ECR-25-260470	19DEC2025	AK	PJ



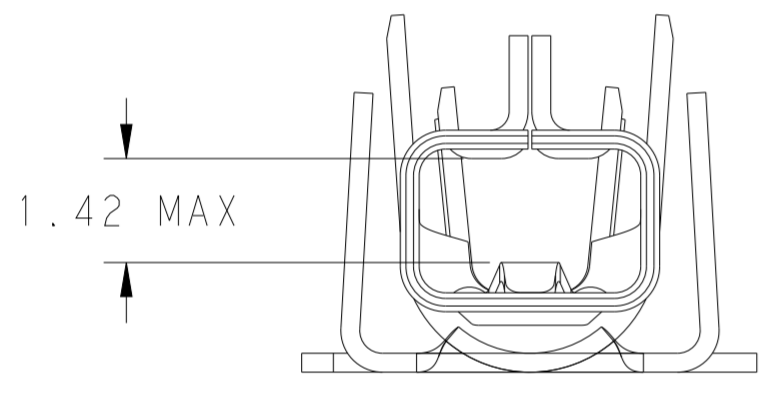
SECTION E-E



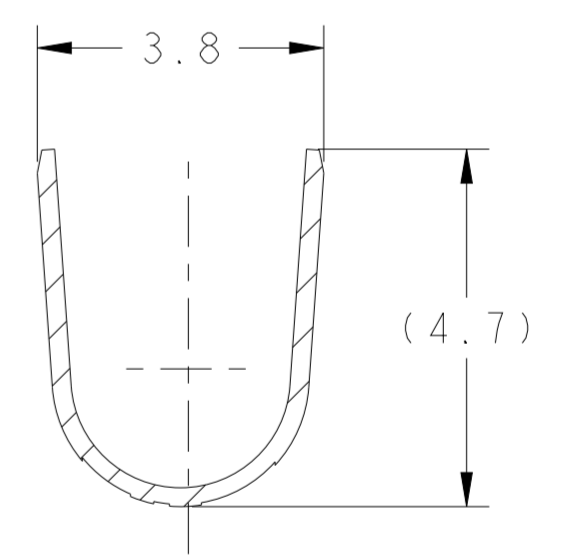
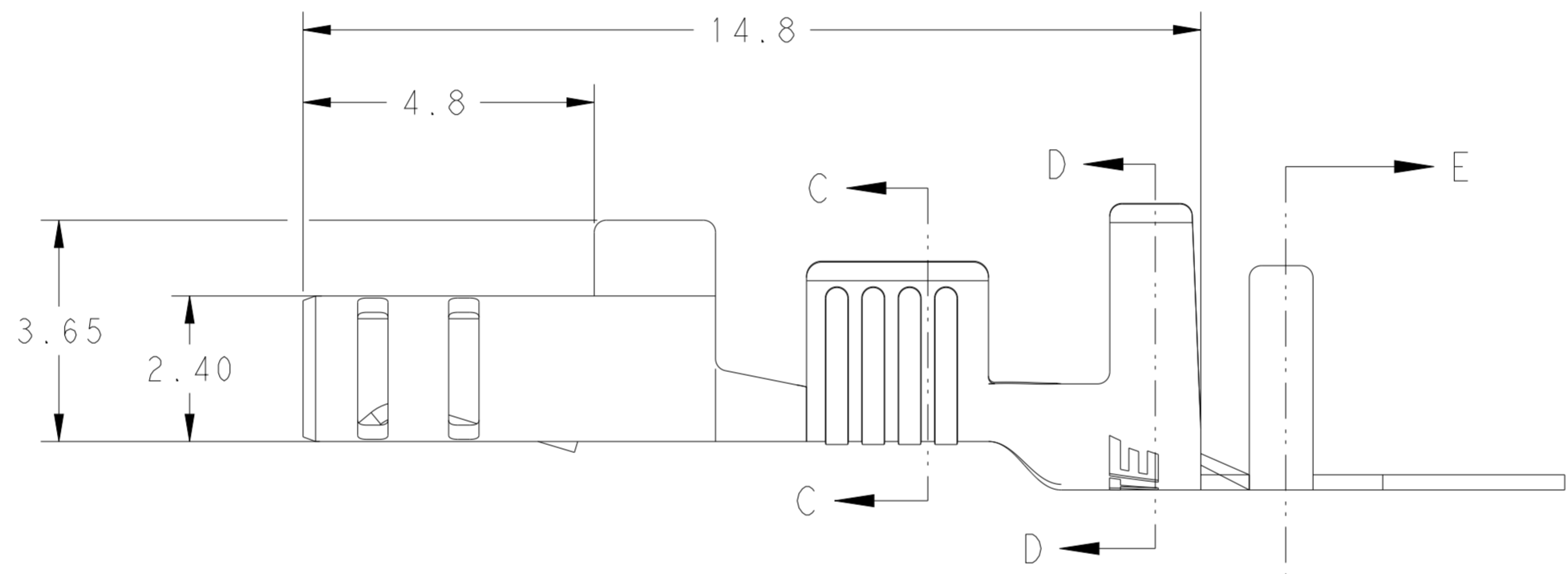
CARRIER NOT PRESENT ON LOOSE PIECE



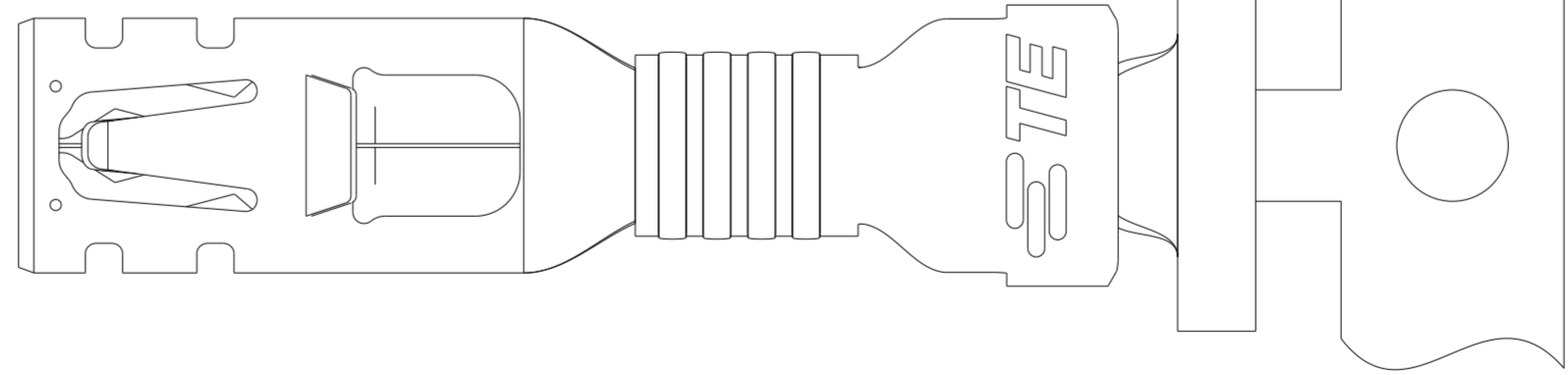
SECTION C-C



1.42 MAX



SECTION D-D



- RECOMMENDED WIRE RANGE: 16~19AWG COPPER STRANDED(1300-2800 CMA) OR 2x 22AWG COPPER STRANDED (1300-2800 CMA TOTAL). FOR A #19 AWG WIRE THE RECOMMENDED MINIMUM CROSS-SECTIONAL AREA IS 0.65mm<sup>2</sup> (1300 CMA).
- FOR WIRE WITH AN AREA/CMA SMALLER THAN INDICATED ABOVE, RECEPTACLE 1971785-( ) IS RECOMMENDED.
- APPLICABLE INSULATION DIAMETER: 2.40~3.30mm. 1.80~3.30mm(2.0 mm MAX EACH WIRE FOR 2x 22AWG) WHEN AN OVERLAP INSULATION APPLICATOR IS USED.
- APPLICABLE MATED PLUG HOUSING P/N:  
 \*-1971773-\*/\*-1971776-\*/\*-1971876-\*/  
 \*-2232265-\*/\*-2232266-\*/\*-2232357-\*

NOTE DELETED.

LOOSE PIECE	COPPER ALLOY	HIGH (150°C)	4-1971783-2
CONTINUOUS W CARRIER	COPPER ALLOY	HIGH(150°C)	1971783-2
CONTINUOUS W CARRIER	COPPER ALLOY	STANDARD(105°C)	1971783-1
CONFIGURATION	MATERIAL	TEMP. RATING	PART NO

THIS DRAWING IS A CONTROLLED DOCUMENT.

DIMENSIONS: mm	TOLERANCES UNLESS OTHERWISE SPECIFIED:	DWN TOMMY WU 11JUL2012	TE Connectivity <b>RECEPTACLE CONTACT POWER TRIPLE LOCK</b>
		CHK HAPYE WU 11JUL2012	
		APVD YUHONG MAO 11JUL2012	
		PRODUCT SPEC 108-106118	
MATERIAL SEE TABLE	PRE-TIN	NAME 114-106118	RESTRICTED TO
		WEIGHT -	SIZE A2 CAGE CODE 00779 DRAWING NO C-1971783
		Customer Drawing	SCALE 6:1 SHEET 1 OF 1 REV H