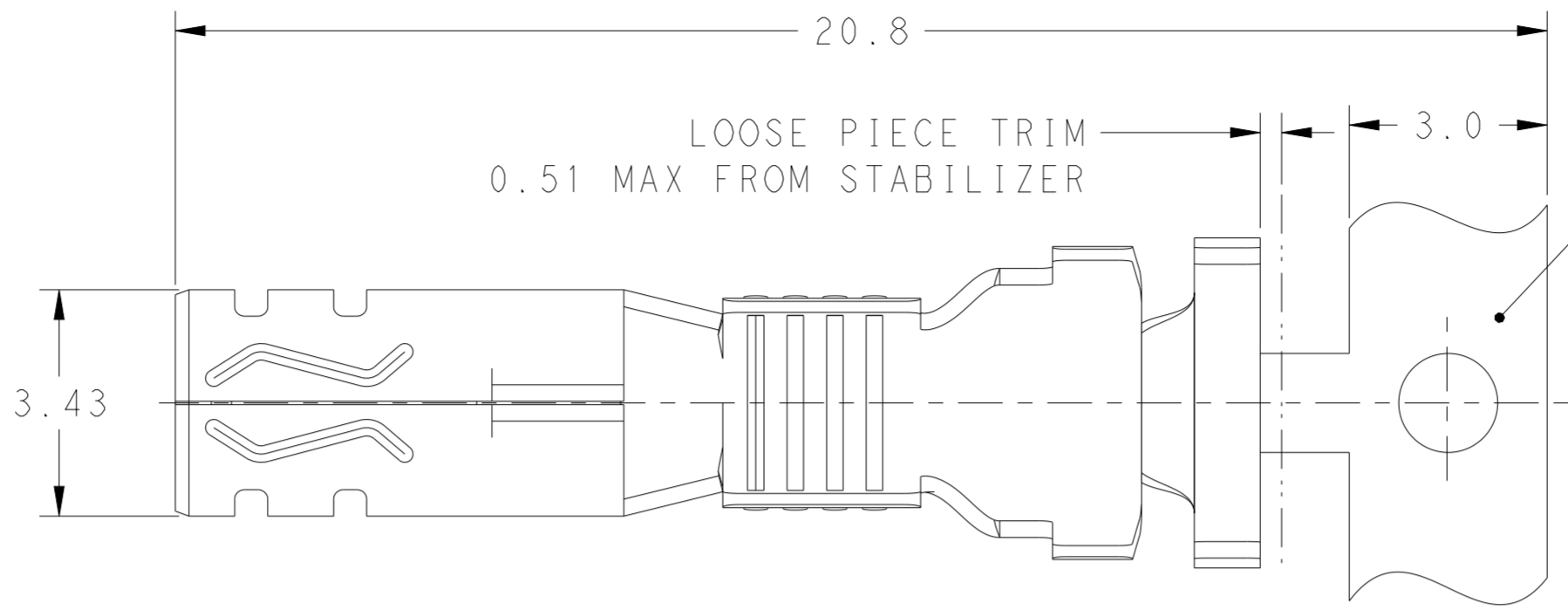
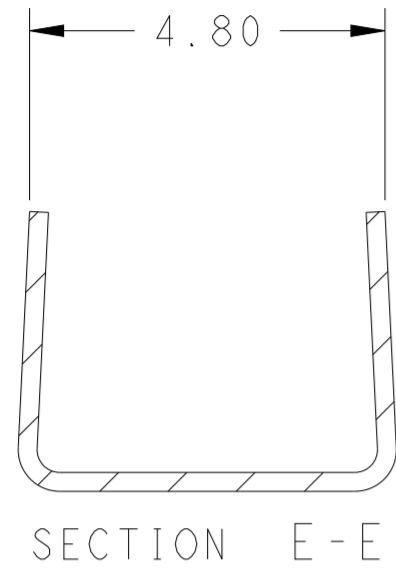
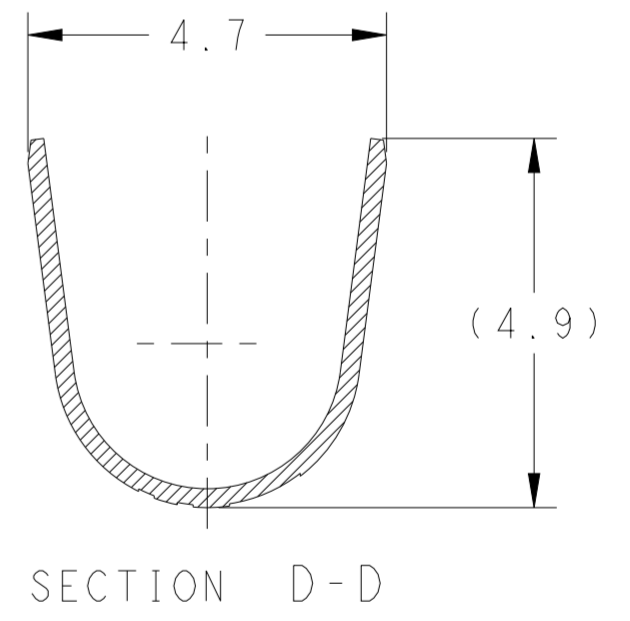
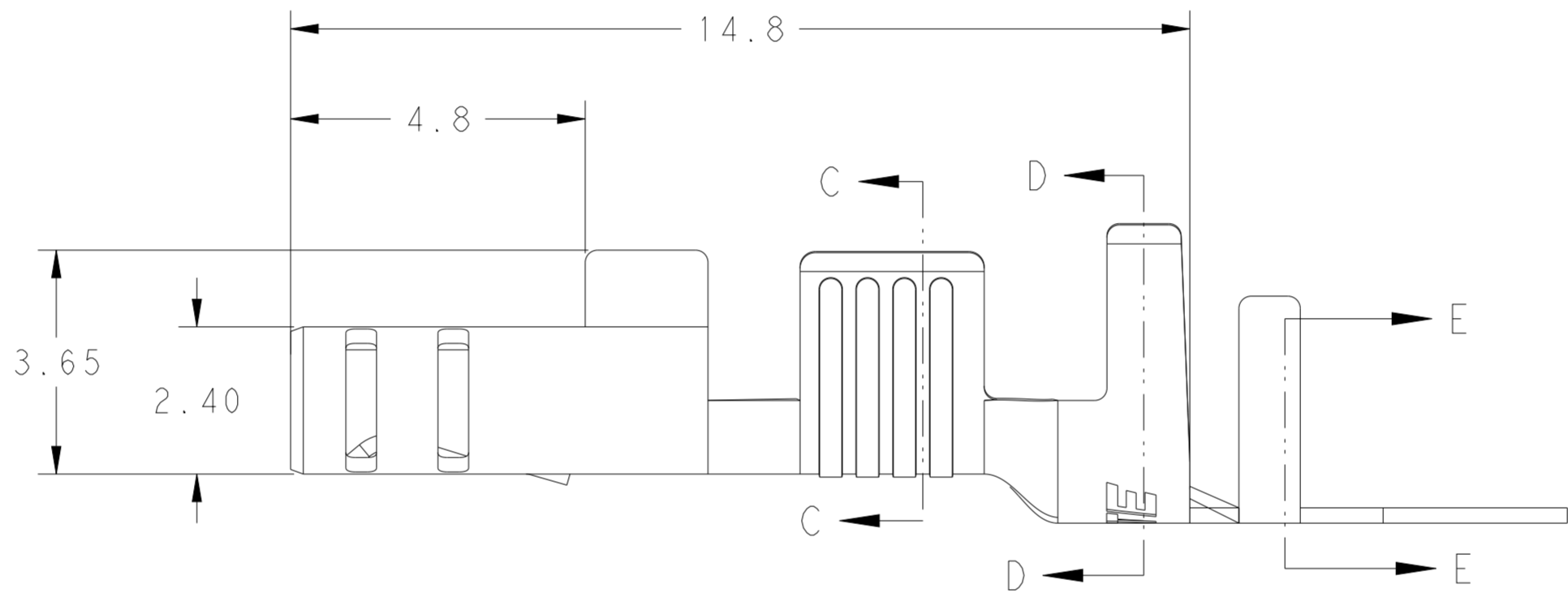
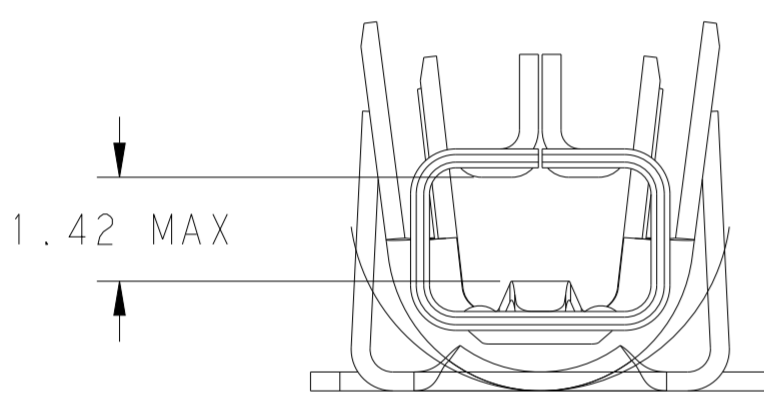
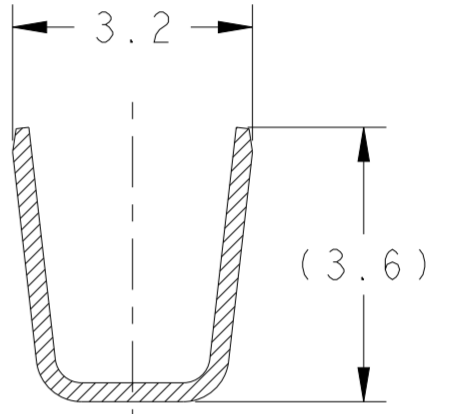


LOC		DIST		REVISIONS			
P	LTR	DESCRIPTION	DATE	DWN	APVD		
E		REVISED PER ECR-21-100678	08APR2021	SS	VS		
F		REVISED PER ECR-23-182543	27JUL2023	SKR	DS		
G		REVISED PER ECR-25-236464	19MAR2025	SKR	JP		
H		REVISED PER ECR-25-260470	19DEC2025	AK	PJ		

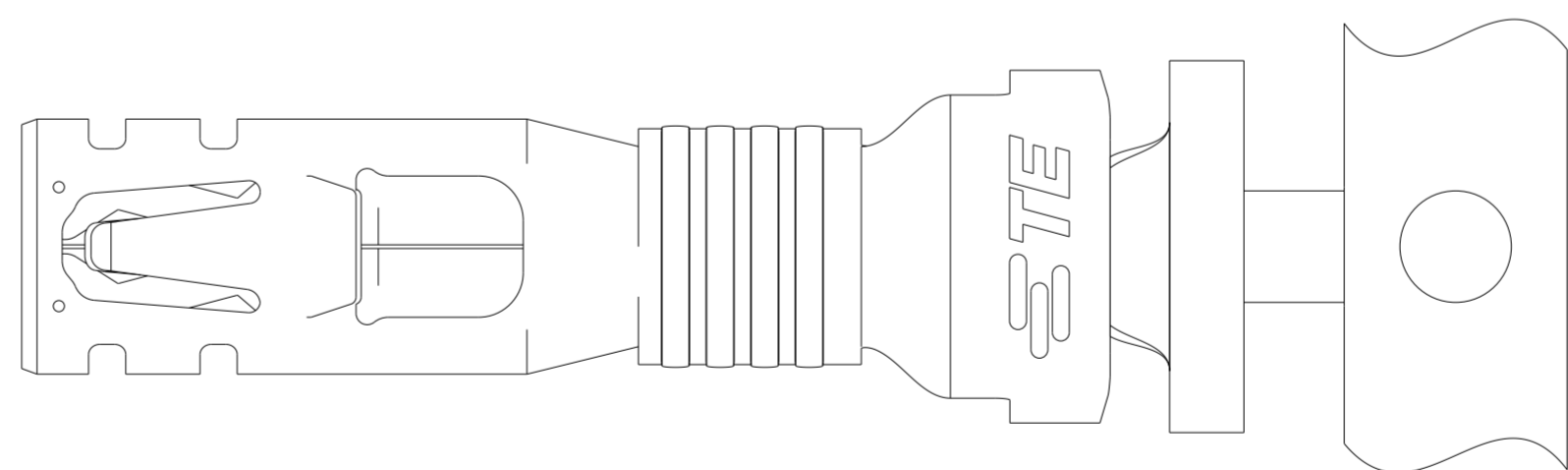


CARRIER NOT PRESENT ON LOOSE PIECE



1. RECOMENDED WIRE RANGE: 14 AWG COPPER STRANDED (3500-4300 CMA)
2. APPLICABLE INSULATION DIAMETER: 3.40~3.70mm,
3. APPLICABLE MATED PLUG HOUSING P/N:
 -1971773-/*-1971776-*/*-1971876-*/
 -2232265-/*-2232266-*/*-2232357-*

NOTE DELETED.



LOOSE PIECE	COPPER ALLOY	HIGH 150°C	4-1971781-2
CONTINUOUS W CARRIER	COPPER ALLOY	HIGH(150°C)	1971781-2
CONTINUOUS W CARRIER	COPPER ALLOY	STANDARD(105°C)	1971781-1
CONFIGURATION	MATERIAL	TEMP. RATING	PART NO

THIS DRAWING IS A CONTROLLED DOCUMENT.

DIMENSIONS: mm	TOLERANCES UNLESS OTHERWISE SPECIFIED: 0 PLC ± 0.5 1 PLC ± 0.5 2 PLC ± 0.30 3 PLC ± 4 PLC ± ANGLES ± FINISH	DWN TOMMY WU 11JUL2012 CHK HAPYE WU 11JUL2012 APVD YUHONG MAO 11JUL2012 PRODUCT SPEC 108-106118 APPLICATION SPEC 114-106118 WEIGHT -	NAME RECEPTACLE CONTACT POWER TRIPLE LOCK
MATERIAL SEE TABLE	PRE-TIN	SIZE A2 CAGE CODE 00779 DRAWING NO. C-1971781	RESTRICTED TO -

Customer Drawing SCALE 6:1 SHEET 1 OF 1 REV H