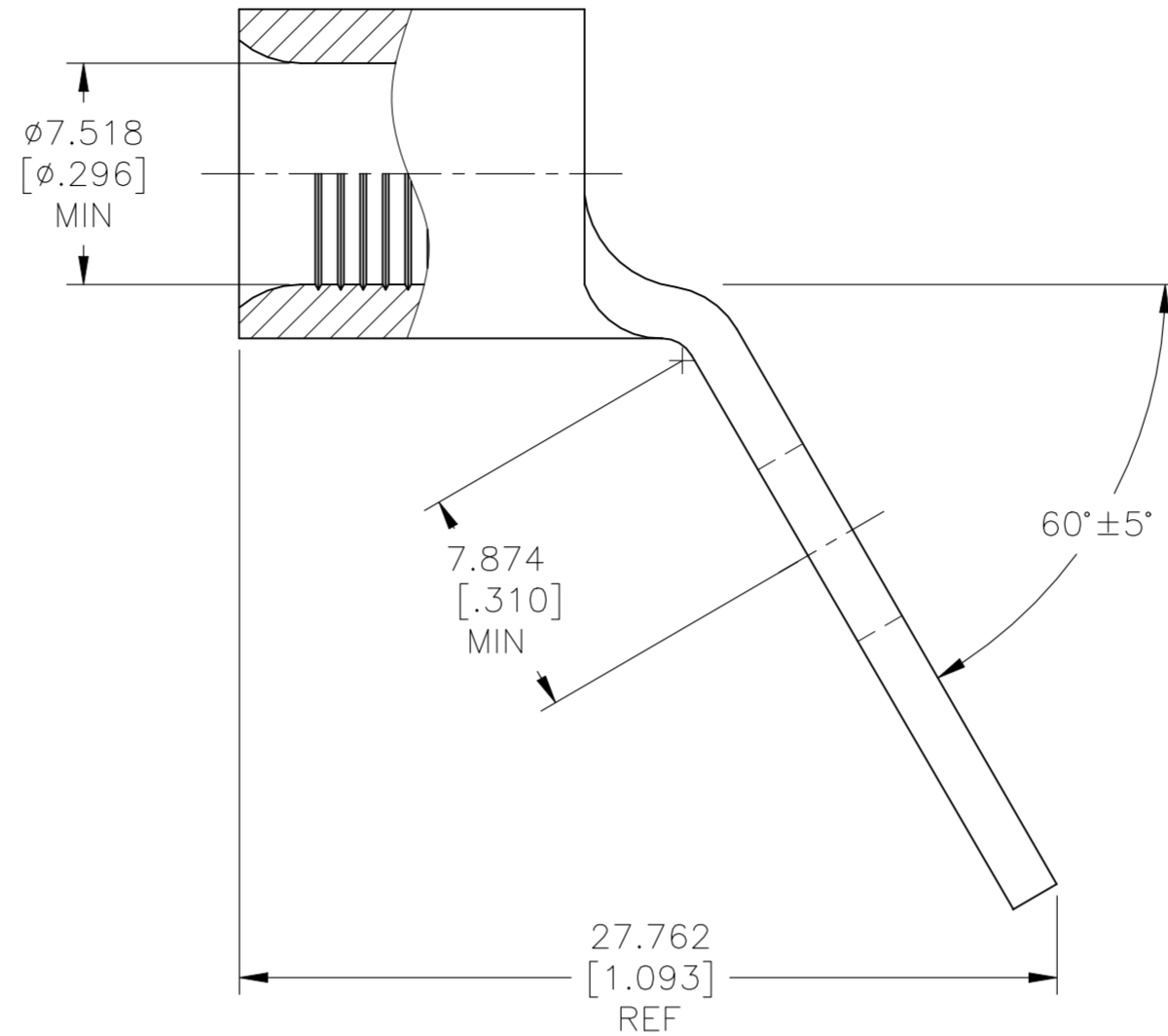
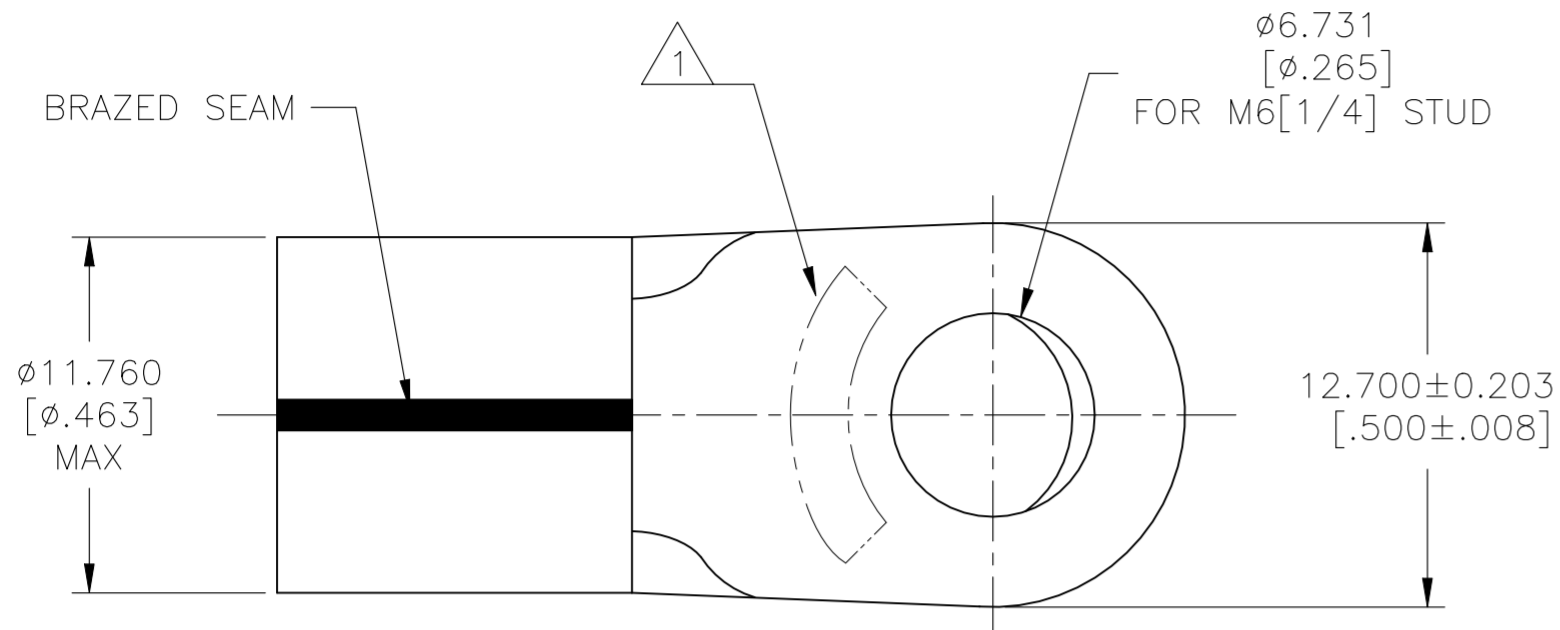


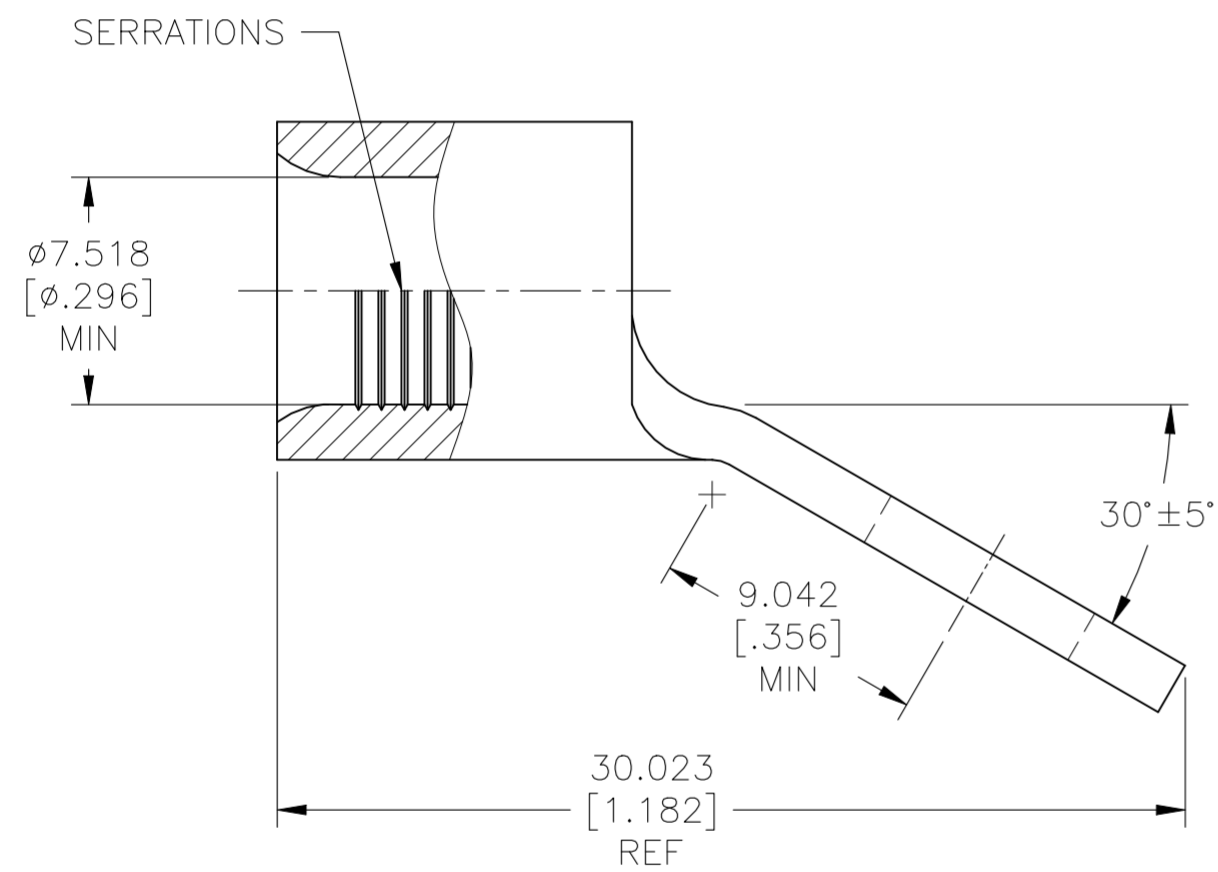
REVISIONS					
P	LTR	DESCRIPTION	DATE	DWN	APVD
C1		REVISED PER ECN-22-176910	29SEP2022	RK	CSD



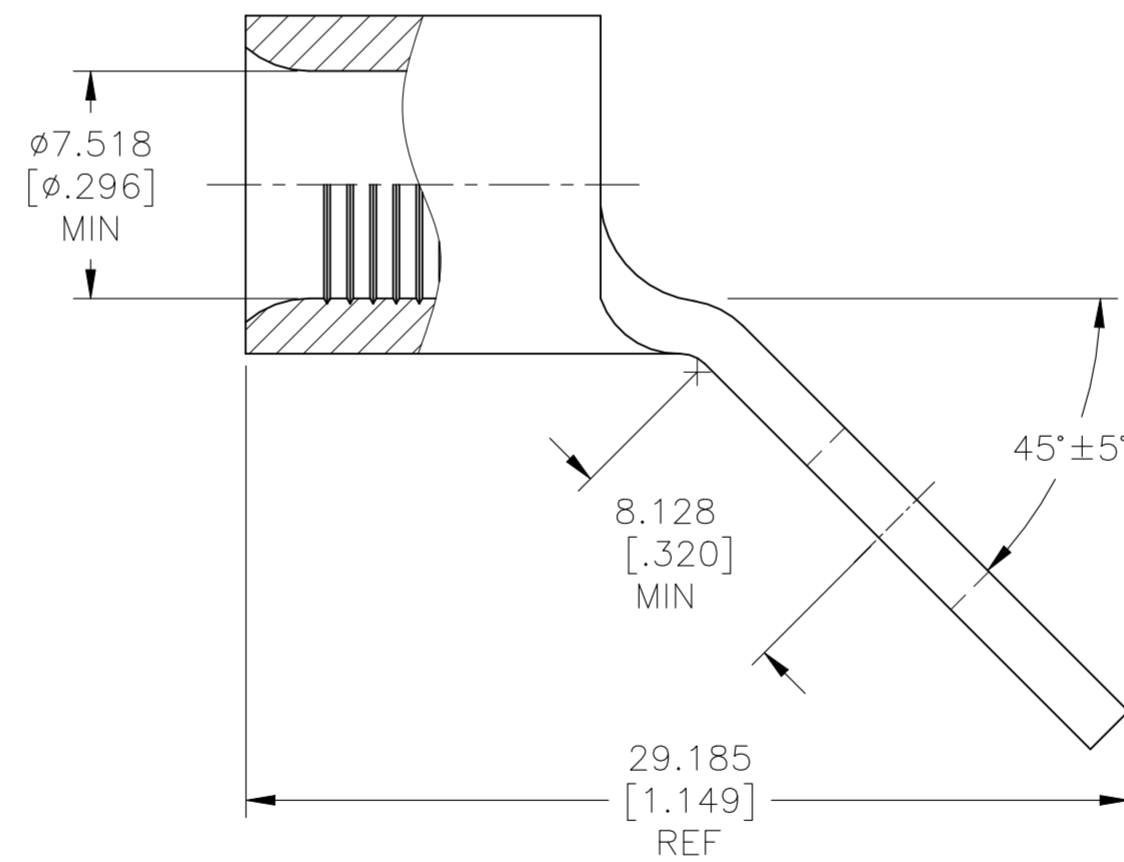
AMP
WIRE RANGE

4 AWG
SOLID OR STRANDED

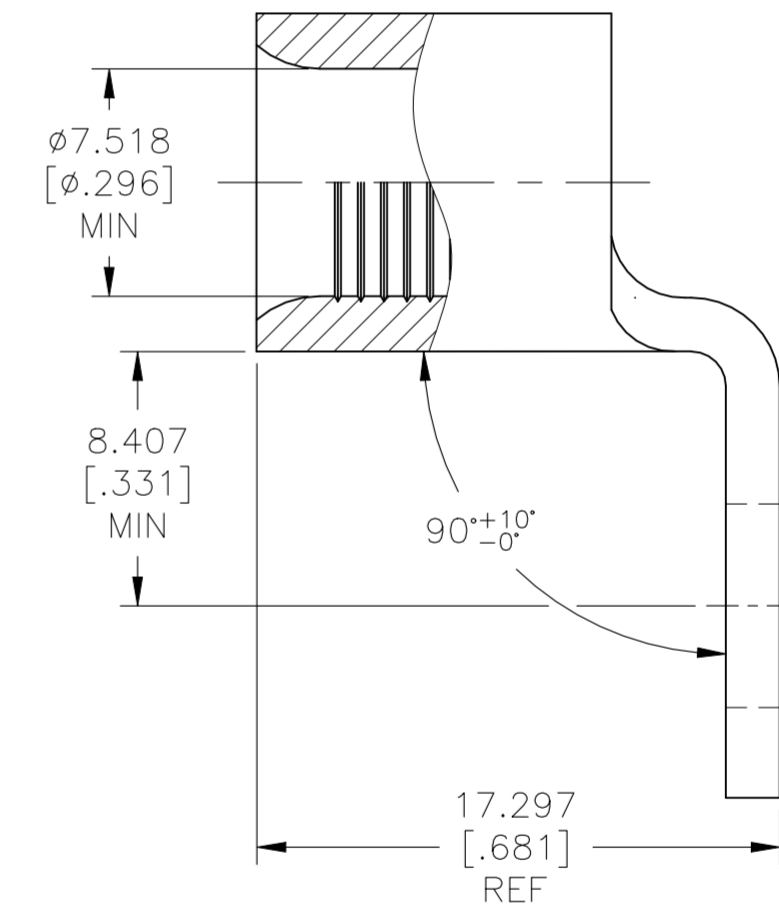
- 1 STAMP AMP 4* APPROX AS SHOWN.
- 2 MATERIAL THK. 1.778±0.076[.070±.003].
- 3 FINISH: NICKEL PLATE 0.00762[.000300] MIN EXT THK PER SAE AMS-QQ-N-290.
- 4 MATERIAL: COPPER PER ASTM B152, ANNEALED



FOR 1958525-4 ONLY



FOR 1958525-2 ONLY



FOR 1958525-3 ONLY

PRELIMINARY	QTY	PACKAGE TYPE	BEND ANGLE	PART NUMBER
	100	LOOSE PIECE	60°	1958525-4
			90°	1958525-3
			45°	1958525-2
			30°	1958525-1

AMP INCORPORATED
CUSTOMER SERVICE SYSTEMS

MAX RECOMMENDED OPERATING TEMPERATURE:
343°C[649°F]

VOLTAGE RATING:
NOT APPLICABLE

WIRE CROSS SECTIONAL AREA RANGE:
16.8-26.7mm² [33,100-52,600] CIR MILS
SOLID OR STRANDED

FOR ADDITIONAL PRODUCT INFORMATION OR COPIES OF DRAWINGS AND TECHNICAL DOCUMENTS

PRODUCT INFORMATION CENTER
1-800-522-6752

FOR APPLICATION TOOLING INFORMATION

TOOLING ASSISTANCE CENTER
1-800-722-1111

FOR ORDER ENTRY

1-800-526-5142

THIS DRAWING IS A CONTROLLED DOCUMENT.

DIMENSIONS:	TOLERANCES UNLESS OTHERWISE SPECIFIED:
mm [INCHES]	0 PLC ± -
	1 PLC ± -
	2 PLC ± -
	3 PLC ± 0.127[.005]
	4 PLC ± -
	ANGLES ± -

MATERIAL 4 FINISH 3

DWN RAVI S 23MAY2018	TE Connectivity	
CHK ROHDE DANIEL F 23MAY2018	NAME	
APVD ROHDE DANIEL F 23MAY2018	PRODUCT SPEC	
108-32046	APPLICATION SPEC	
114-2162	SIZE A2	CAGE CODE 00779
WEIGHT -	DRAWING NO C=1958525	RESTRICTED TO -
CUSTOMER DRAWING	SCALE 4:1	SHEET 1 OF 1
		REV C1