

DC5308P-ADC User Guide

Introduction

The DC5308P-ADC is a daughter card for the Cirrus Logic Dunglass (CDB-PROAUDIO) system for high performance ADC, DAC and codec devices. This user guide details how to connect the DC5308P-ADC to a Dunglass (CDB-PROAUDIO) system platform and how to get started.

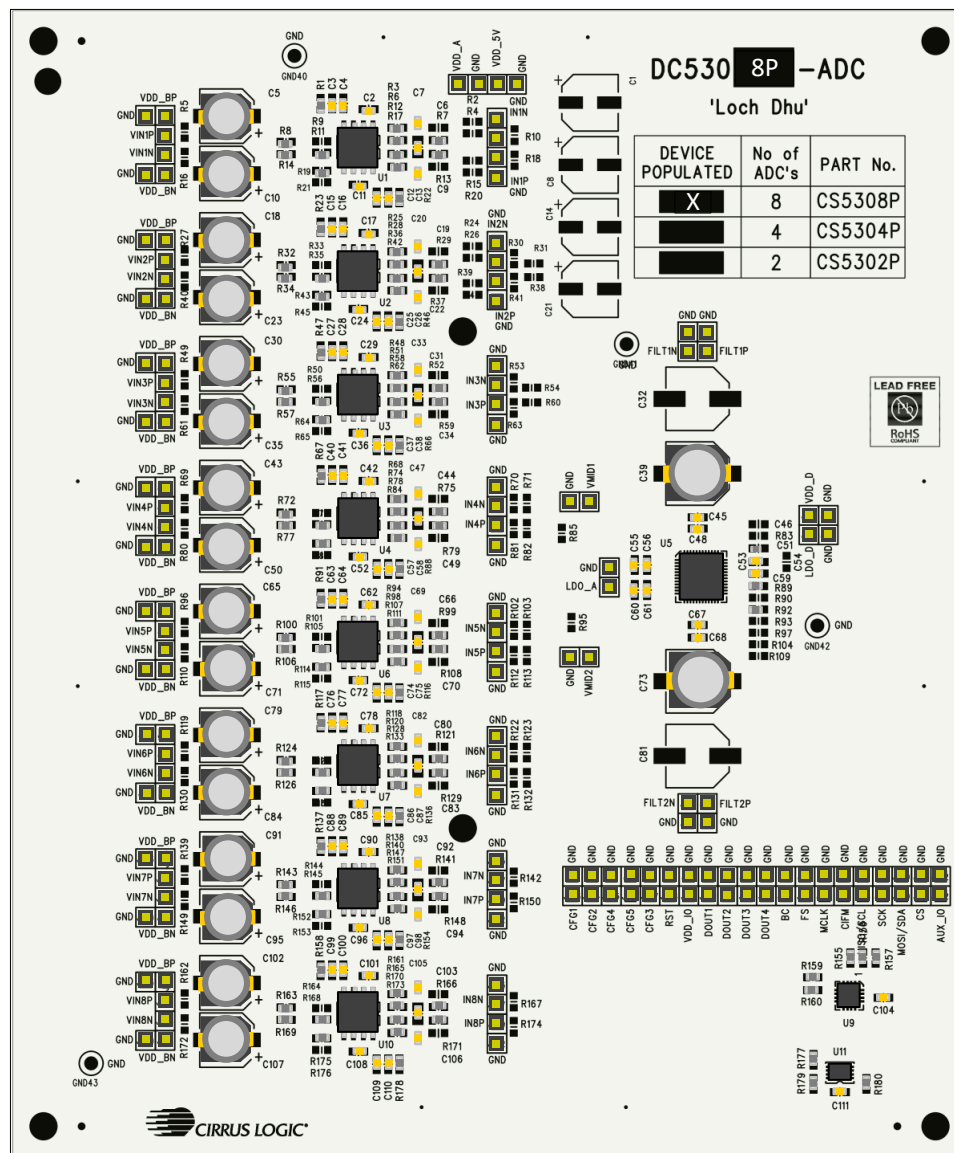


Figure 1: DC5308P-ADC Daughter Card

Table of Contents

1	Hardware Connections.....	3
1.1	How to Connect DC5308P-ADC onto the Dungle System	3
1.2	USB & Power Connection.....	4
1.2.1	JURA Module.....	5
1.2.2	Dungle Boot Procedure with Jura Module	5
1.3	Routing the Digital Audio Signals	6
2	Driver Installation and SoundClear Studio Support.....	7
2.1	SoundClear Studio.....	7
2.1.1	Download SoundClear Studio Software & Drivers	7
2.2	SoundClear Studio Quick Start Guide	8
2.2.1	Installing Packages	8
2.2.2	SoundClear Studio User Guide	8
2.2.3	Creating a Virtual System.....	9
2.2.4	Adding an Existing System.....	10
2.2.5	Executing SoundClear Studio Scripts.....	11
3	DC5308P-ADC Software Mode Quick Start	12
4	Hardware Mode Control	12
4.1	Hardware Mode Rotary Switch Settings.....	13
5	SPDIF Out	15
5.1	Dungle Jumper Config for DC5308P-ADC.....	15
5.2	Digital Audio Signal Routing to S/PDIF Transceiver	16
5.3	Selecting Optical or Electrical S/PDIF	16
6	Notices	17
7	Revision History.....	17

1 Hardware Connections

The Dunglass system supports interchangeable daughter cards for a variety of ADC, DAC and codec devices.

Caution:

Daughter cards should not be inserted or removed while the Dunglass system is powered. Fully disconnect or power down external power supply before changing daughter cards.

For more information on the Dunglass (CDB-PROAUDIO) platform, refer to the CDB-PROAUDIO User Guide.

1.1 How to Connect DC5308P-ADC onto the Dunglass System

The DC5308P is a 4-header daughter card and should be plugged onto DCJ1, DCJ2, DCJ3 & DCJ4. The daughter card connectors are keyed and will only plug in one way. There is also an alignment dot on each board to help with placement.

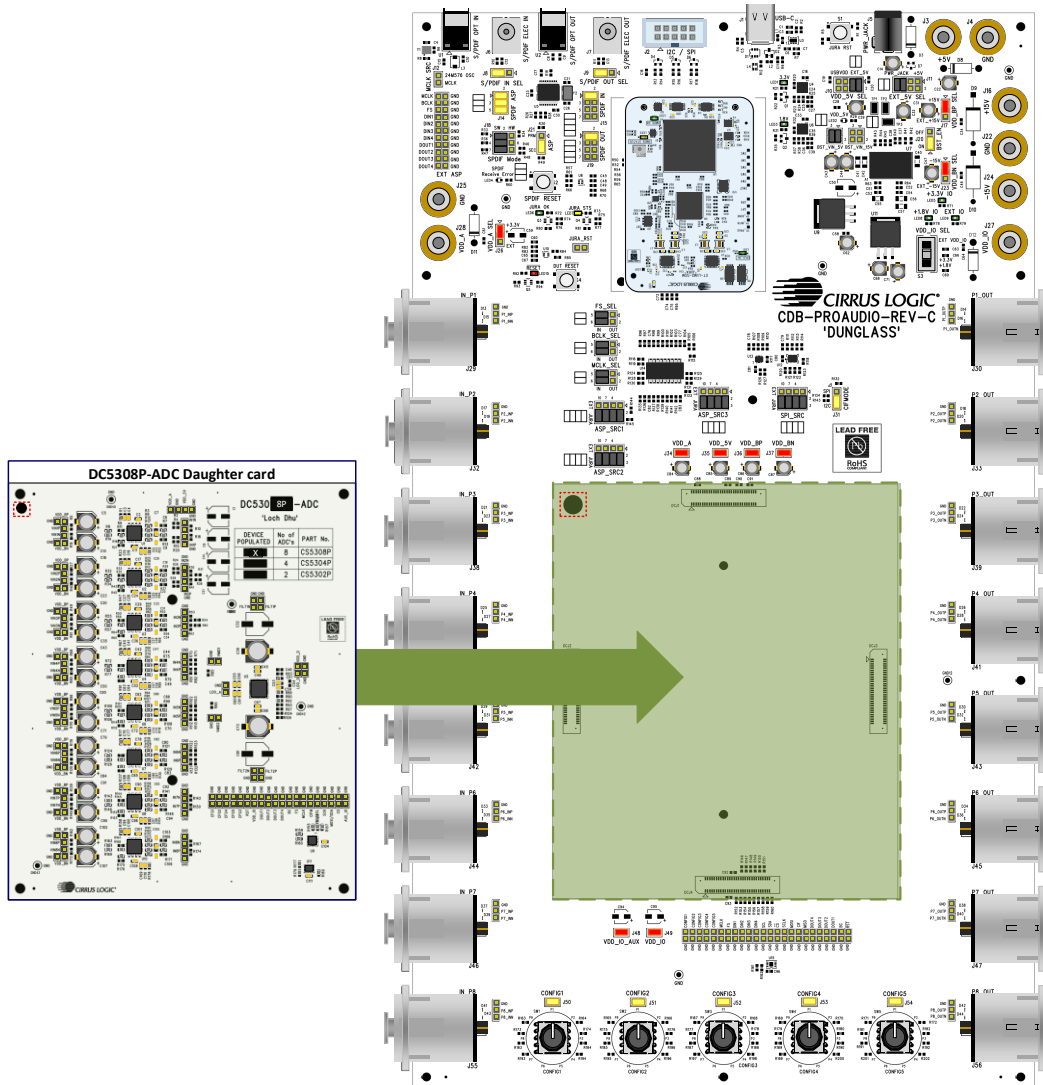


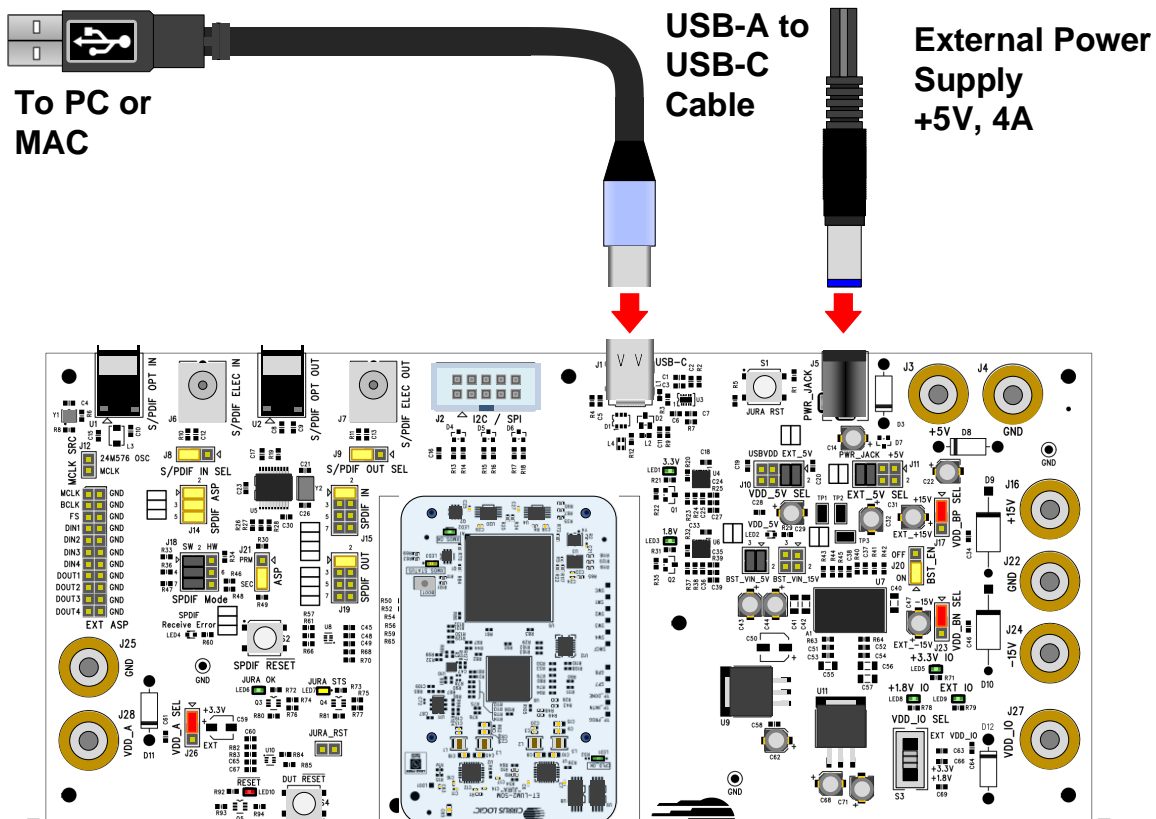
Figure 2: How to Connect DC5308P-ADC onto the Dunglass System

1.2 USB & Power Connection

Dunglass is powered using a 5V external power supply and is controlled via a single USB connection. The Jura module supports the following functions via the USB connection:

- I2C/SPI communications to control device and board.
- Multichannel USB streaming audio (USB class 2).

The board is provided with a USB-A to USB-C cable and a 5V wall supply.



The Jura module supports I2C/SPI communication to control the Dunglass system and daughter card; it also enables multichannel USB streaming audio (USB audio Class 2).

1.2.2 Dunglass Boot Procedure with Jura Module

The boot time of the Dunglass system varies depending on the version of firmware on the Jura module but is typically in the range of 2 to 5 seconds after applying power to the board.

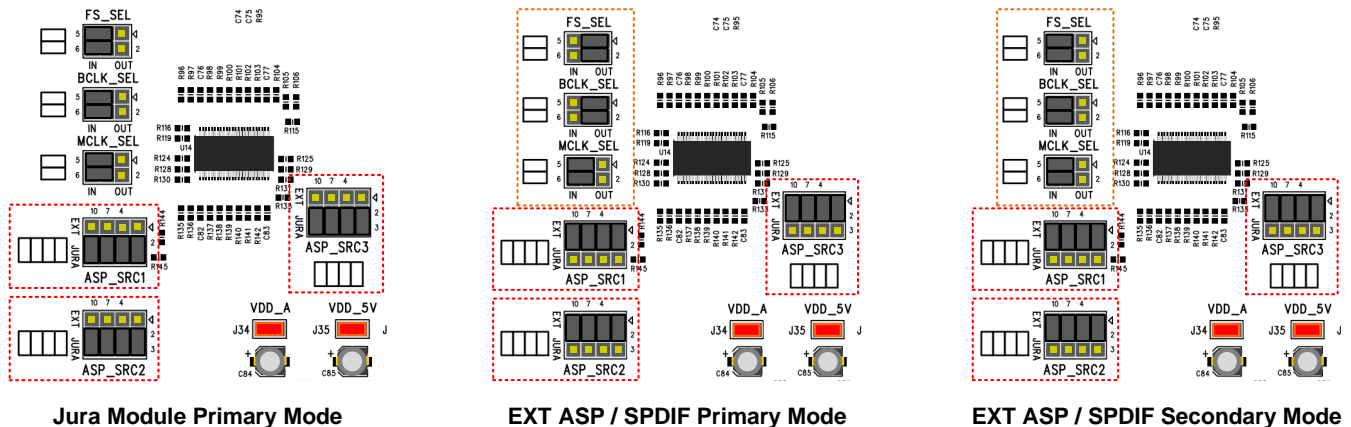
1.3 Routing the Digital Audio Signals

The digital audio paths to/from the daughter card can be routed to the Jura module, or else to the EXT ASP header and S/PDIF transceiver. The routing is configured using the ASP_SRC1, ASP_SRC2 & ASP_SRC3 headers.

- JURA = Digital audio signals routed to Jura module.
- EXT = Digital audio signals routed to EXT ASP header/SPDIF.

The ASP_SRC1, ASP_SRC2 & ASP_SRC3 headers are configured as shown in Table 1.

Table 1 Digital Signal Routing



The Jura module always operates in Primary Mode – the MCLK, BCLK and FSYNCR are generated by the Jura module, as inputs to the daughter card.

If the digital audio is routed to the EXT ASP header and S/PDIF transceiver, the direction of the MCLK, BCLK, and FSYNCR signals must be configured using the MCLK_SEL, BCLK_SEL & FS_SEL headers:

- The MCLK_SEL sets the direction of the MCLK signal to/from the daughter card; IN configures the EXT ASP header/SPDIF as the MCLK input to the daughter card; OUT configures the daughter card as the MCLK source.
- The BCLK_SEL and FS_SEL links select the direction of the BCLK and FSYNCR signals to/from the daughter card.

Note that the EXT ASP header and S/PDIF transceiver use 3.3V logic levels; a level shifter is incorporated to interface with the configured VDD_IO domain.

2 Driver Installation and SoundClear Studio Support

2.1 SoundClear Studio

SoundClear Studio (SCS) is a PC/Mac-based tool used to configure Cirrus Logic devices. The tools suite provides support for evaluation and development and can be used with Dunglass system and associated daughter cards.

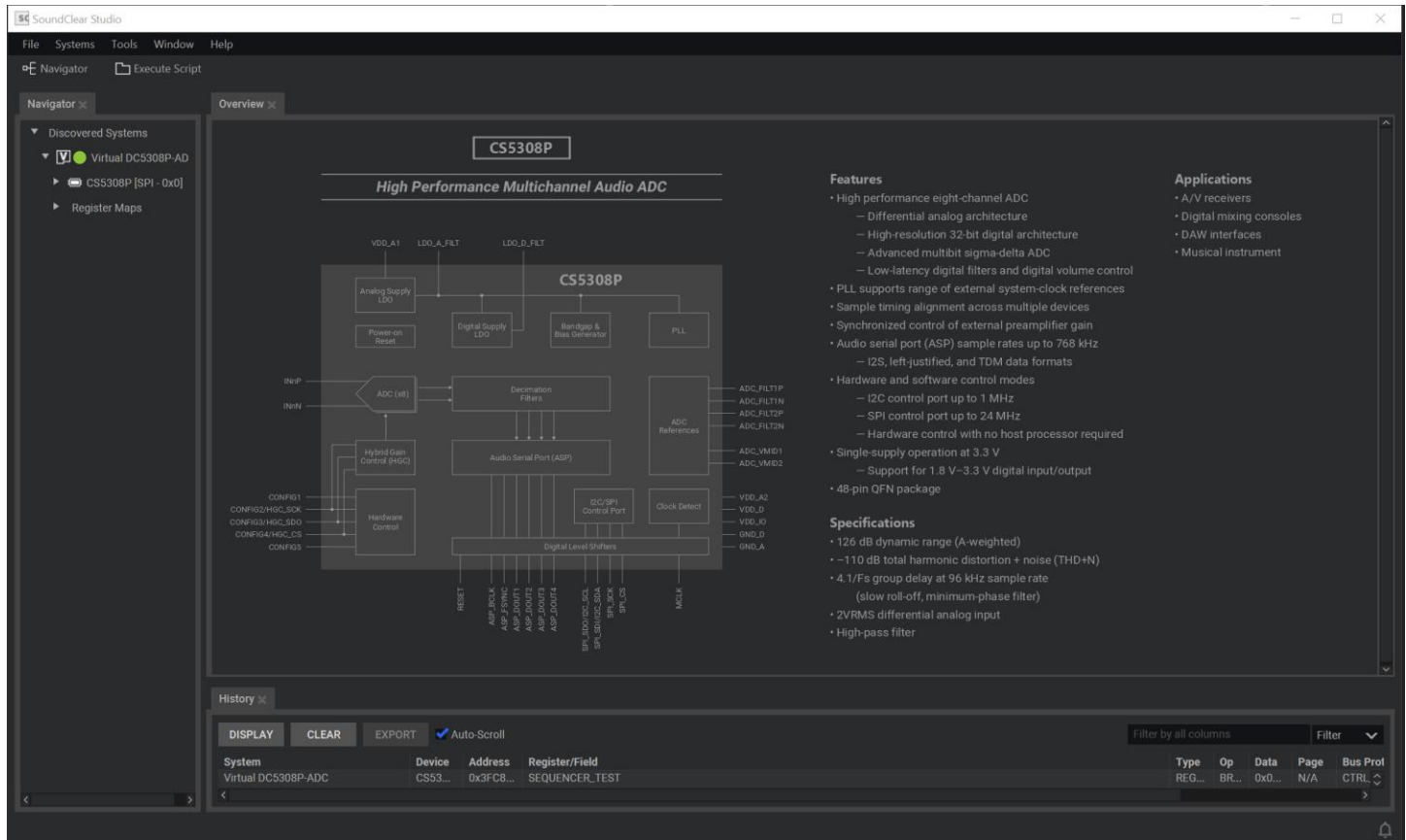


Figure 5: SoundClear Studio

2.1.1 Download SoundClear Studio Software & Drivers

SoundClear Studio and associated software collateral required for the Dunglass system can be downloaded from the CS5308P product page: <https://cirrus.com/products/cs5308p/>

The required components are as follows:

- **SoundClear Studio 2.1.** Run the appropriate installer on your Windows or macOS computer to install SoundClear Studio.
- **CS5308P SCS Package.** Install this in SoundClear Studio to incorporate the CS5308P-specific software components in SoundClear Studio. See Section 2.2.1 for details on how to install an SCS package.
- **Jura Windows Setup.** On Windows computers, run the Cirrus Logic USB Audio Setup to install the driver that enables SoundClear Studio to communicate with the Jura board. (There is no additional setup required on macOS.)

2.2 SoundClear Studio Quick Start Guide

2.2.1 Installing Packages

Each daughter card has its own individual SoundClear Studio package that must be installed separately from the main SoundClear Studio Software. These are installed from the main menu using **"File → Install Package..."**. Multiple packages can be installed together by selecting more than one using the file dialog.

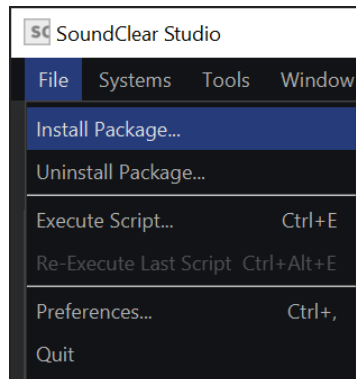


Figure 6: SoundClear Studio – Installing Board Packages

2.2.2 SoundClear Studio User Guide

The SoundClear Studio User Guide can be accessed from the main menu using **"Help → Open Help Contents..."**

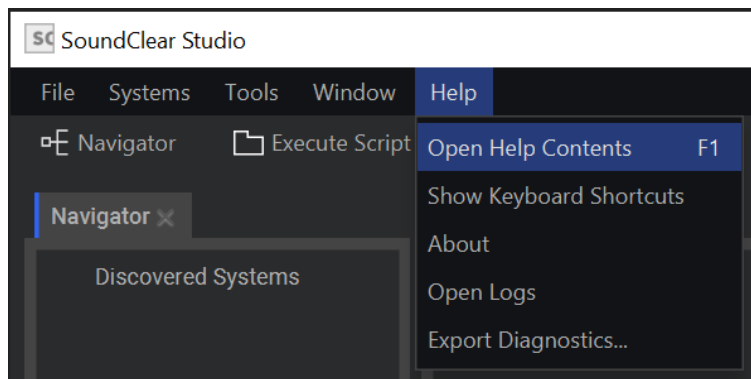


Figure 7: SoundClear Studio – User Guide

2.2.3 Creating a Virtual System

A virtual (non-hardware) version of the system can be created using “**Systems** → **Add Virtual System...**”

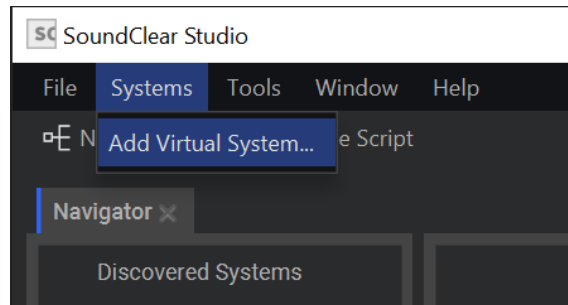


Figure 8: SoundClear Studio – Creating a Virtual System

This opens a dialog to select an installed system (shown here is the DC5308P-ADC):

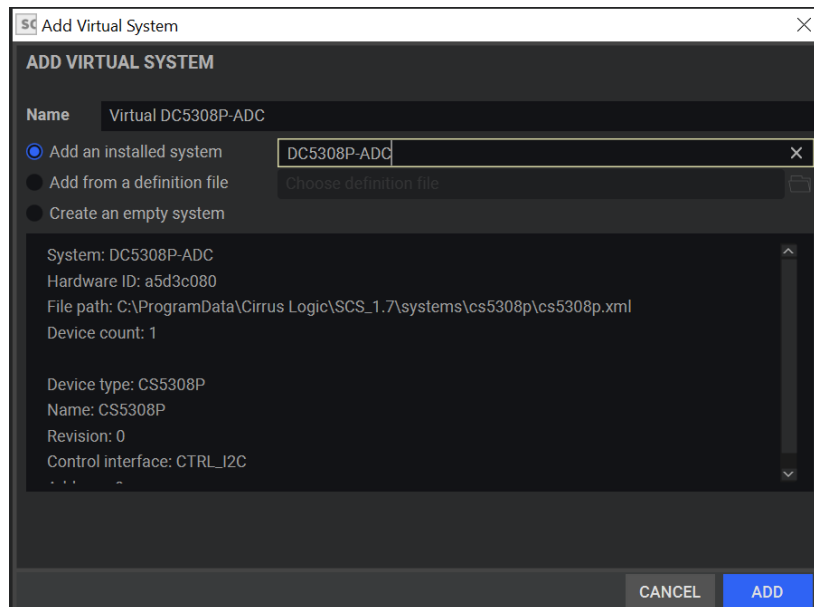


Figure 9: SoundClear Studio – Adding a Virtual System

Once created, a virtual system enables the user to interact with virtual versions of the device register map and helper panels.

2.2.4 Adding an Existing System

SoundClear Studio automatically detects board hardware such as the Jura module and Cirrus Logic devices. In the event of devices not being detected automatically, a device can be added manually. Right click on the system and select “**Add Device...**”

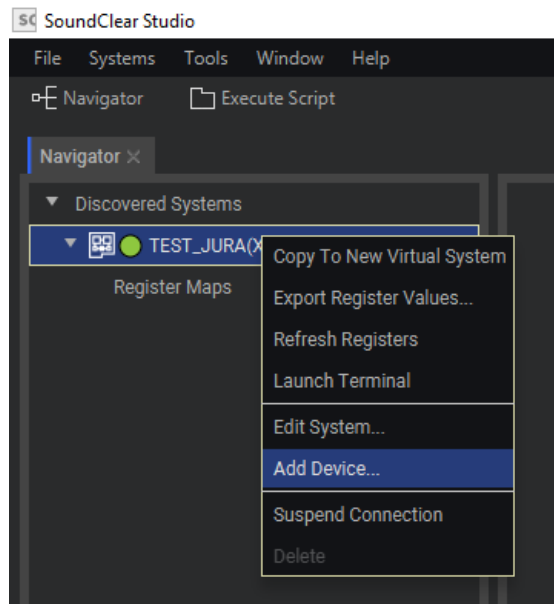


Figure 10: SoundClear Studio – Adding an Existing System

Then select the device from those installed, along with the protocol and address of the part (this can be edited again by right clicking on the device and selected “**Edit Device...**”):

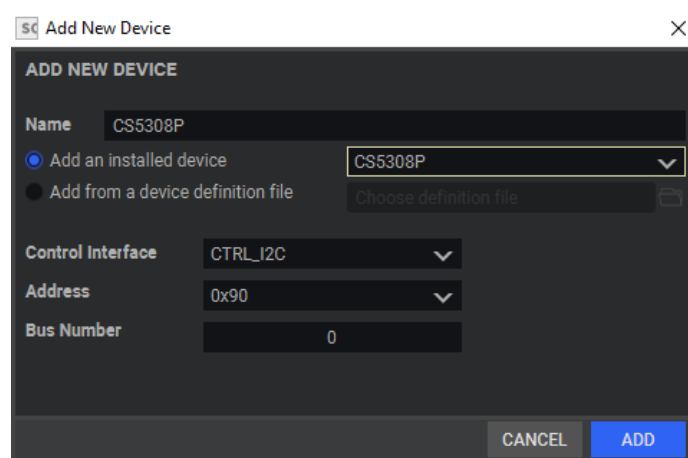


Figure 11: SoundClear Studio – Adding an Existing System

2.2.5 Executing SoundClear Studio Scripts

SoundClear Studio provides the ability to interact with the device register map using Python scripts. These scripts can sequence register operations to configure the device into desired states, which can then be executed from SoundClear Studio using **“File→Execute Script...”**

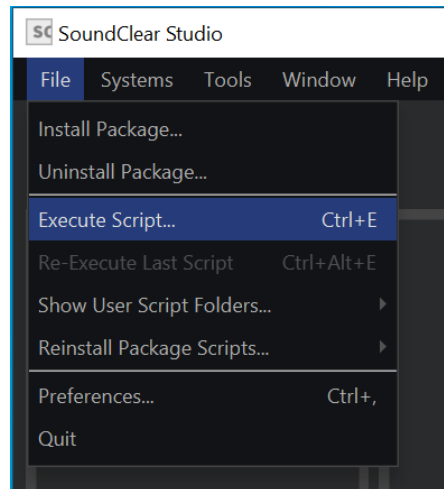


Figure 12: SoundClear Studio – Executing Script

The DC5308P-ADC SoundClear Studio package installs a set of scripts to configure the device for common use cases. The scripts are available at <User Documents>\Cirrus Logic\SCS\Scripts\<Package Name>.

The CS5308P scripts can be accessed from SoundClear Studio using **“File→Show User Script Folder→CS5308P”**

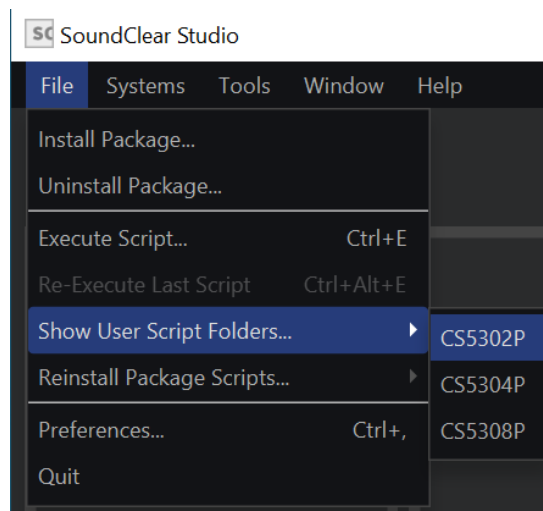


Figure 13: SoundClear Studio – Show User Script Folder

3 DC5308P-ADC Software Mode Quick Start

After installing the SoundClear Studio software and DC5308P-ADC board package, follow the steps below to get up and running quickly:

- Connect the hardware as shown in Figure 2
- Connect USB cable to PC
- Power up the system and ensure JURA OK, 1.8V, 3.3V, VDD_5V LEDs are illuminated.
- Configure signal routing as shown in Table 1
 - For SPDIF output see Section 5
- Start SoundClear Studio
 - SoundClear Studio should auto-detect the DC5308P-ADC daughter card. If not, follow the procedure specified in Section 2.2.4
- Run one of the scripts from the following location.
 - Windows script location: C:\ProgramData\Cirrus Logic\SCS_1.7\scripts
 - Mac script location: /Users/Shared/Cirrus Logic/SCS_1.7/scripts

4 Hardware Mode Control

The Duglass system supports the hardware control modes for Cirrus Logic high performance ADC, DAC and Codec devices. These are supported via the rotary switches on the Duglass system.

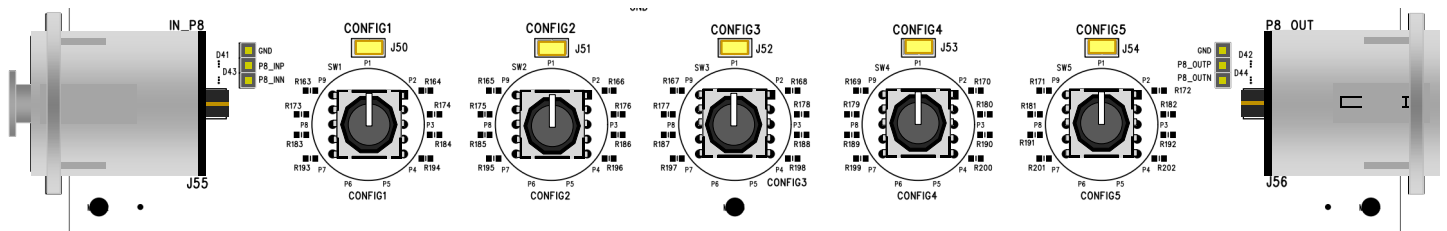


Figure 14: Duglass Rotary Switches for Hardware Control Mode

Each switch has silkscreen on the board to indicate the position of the switch. Each switch position enables a pull resistor on the respective CONFIG pin to VDD_A or ground.

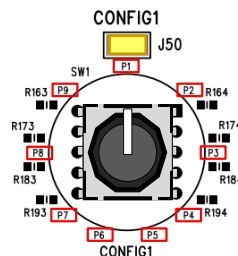


Figure 15: Rotary Switch

4.1 Hardware Mode Rotary Switch Settings

The rotary switch functions are described in the following tables. Refer to the CS5308P datasheet for further details of the hardware-mode control options.

The CONFIG1 pin selects the ASP operating configuration.

Table 2: CONFIG1 Hardware Control – ASP Configuration

Switch Position	Config Pin Configuration		Description
P1	Pull-up to VDD_A	0 Ω	Software control mode (I2C/SPI)
P2		4.7 k Ω	ASP Primary Mode, 44.1 kHz, 48 kHz sample rate
P3		22 k Ω	ASP Primary Mode, 88.2 kHz, 96 kHz sample rate
P4		100 k Ω	ASP Primary Mode, 176.4 kHz, 192 kHz sample rate
P5	Pull-Down to GND	100 k Ω	ASP Secondary Mode, 176.4 kHz, 192 kHz sample rate
P6		22 k Ω	ASP Secondary Mode, 88.2 kHz, 96 kHz sample rate
P7		4.7 k Ω	ASP Secondary Mode, 44.1 kHz, 48 kHz sample rate
P8		0 Ω	ASP Secondary Mode, autodetect sample rate
P9	No Connection		

1. Autodetect sample rate is only supported in MCLK 256 fsb or MCLK 512 fsb clocking configurations.

The CONFIG2 pin selects the ASP format and TDM timeslots option.

Table 3: CONFIG2 Hardware Control – ASP Configuration

Switch Position	Config Pin Configuration		Description
P1	Pull-up to VDD_A	0 Ω	ASP TDM Mode—minimum time slots
P2		4.7 k Ω	ASP TDM Mode—maximum time slots, data output on BCLK falling edge (half-cycle mode)
P3		22 k Ω	ASP TDM Mode—maximum time slots, data output on BCLK rising edge (full-cycle mode)
P4		100 k Ω	
P5	Pull-Down to GND	100 k Ω	
P6		22 k Ω	
P7		4.7 k Ω	ASP Left-Justified Mode
P8		0 Ω	ASP I ² S Mode
P9	No Connection		

The CONFIG3 pin selects the TDM slot selection in TDM Mode.

Table 4: CONFIG3 Hardware Control – TDM Slot Selection

Switch Position	Config Pin Configuration		Description
P1	Pull-up to VDD_A	0 Ω	Slots 8–15
P2		4.7 k Ω	
P3		22 k Ω	
P4		100 k Ω	
P5	Pull-Down to GND	100 k Ω	Slots 0–7
P6		22 k Ω	
P7		4.7 k Ω	
P8		0 Ω	
P9	No Connection		

The CONFIG4 pin selects the clock reference and ASP channel ordering.

Table 5: CONFIG4 Hardware Control – Clocking Configuration

Switch Position	Config Pin Configuration		Clock Reference	PLL	Channel Order
P1	Pull-up to VDD_A	0 Ω	BCLK = 64 fs	Enabled	Default
P2		4.7 k Ω	MCLK = 512 fsb	Bypass	Default
P3		22 k Ω	MCLK = 256 fsb	Enabled	Default
P4		100 k Ω	MCLK = 512 fsb	Enabled	Default
P5	Pull-Down to GND	100 k Ω	MCLK = 512 fsb	Enabled	Reversed
P6		22 k Ω	MCLK = 256 fsb	Enabled	Reversed
P7		4.7 k Ω	MCLK = 512 fsb	Enabled	Reversed
P8		0 Ω	BCLK = 64 fs	Bypass	Reversed
P9	No Connection				

1. fsb is the base sample rate. fsb = 48 kHz for 48 kHz-related sample rates; fsb = 44.1 kHz for 44.1 kHz-related sample rates.
2. BCLK 64 fs configuration is only supported in ASP Secondary Mode.

The CONFIG5 pin selects the digital filter.

Table 6: CONFIG5 Hardware Control – Digital Filter Selection

Switch Position	Config Pin Configuration		Description
P1	Pull-up to VDD_A	0 Ω	Minimum phase, slow roll-off, HPF bypass
P2		4.7 k Ω	Minimum phase, fast roll-off, HPF bypass
P3		22 k Ω	Linear phase, slow roll-off, HPF bypass
P4		100 k Ω	Linear phase, fast roll-off, HPF bypass
P5	Pull-Down to GND	100 k Ω	Linear phase, fast roll-off, HPF enabled
P6		22 k Ω	Linear phase, slow roll-off, HPF enabled
P7		4.7 k Ω	Minimum phase, fast roll-off, HPF enabled
P8		0 Ω	Minimum phase, slow roll-off, HPF enabled
P9	No Connection		

The DC5308P-ADC daughtercard supports S/PDIF output via optical and electrical connectors in software mode for sample rates up to 96 kHz (optical) or up to 192 kHz (electrical). The Duglass system supports S/PDIF output at 48 kHz, 96 kHz, and 192 kHz sample rates.

When using the S/PDIF transceiver on the Dunglass system, the jumper links must be configured as in Table 7. The WM8804 S/PDIF transceiver operates in software mode. Configuration scripts are provided as part of the DC5308P-ADC daughter card SoundClear Studio package.

The SPDIF Receive Error (LED4) is lit when there is no S/PDIF input source present.

5.2 Digital Audio Signal Routing to S/PDIF Transceiver

The signal source for the S/PDIF output transmitter is configured using the SPDIF OUT header; the source can be selected from any of the ASP_DOUTn pins from the ADC device.

Note that the S/PDIF output is compatible with ASP I2S and Left-Justified Modes only. The ASP_DOUTn pins support Channels 1–2, 3–4, 5–6, and 7–8 respectively.

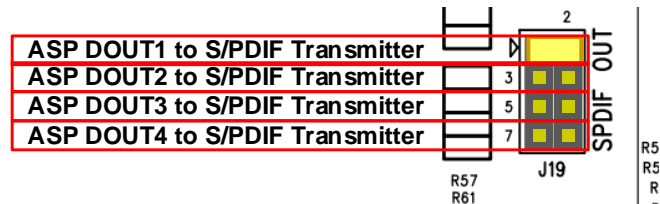


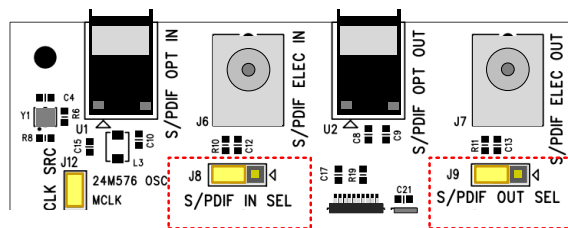
Figure 16: SPDIF IN and SPDIF out Jumper Link Configuration

5.3 Selecting Optical or Electrical S/PDIF

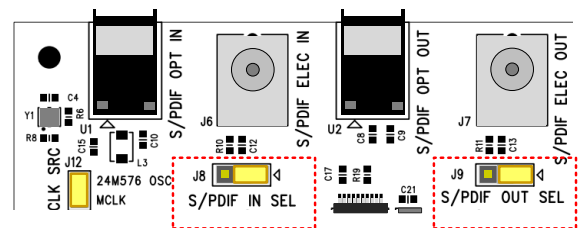
The S/PDIF IN SEL and S/PDIF OUT SEL headers configure the S/PDIF input and output paths in optical or electrical modes. The headers are configured as shown in Table 8.

The Duglass system supports S/PDIF input/output at sample rates up to 96 kHz (optical) or up to 192 kHz (electrical).

Table 8 SPDIF I/O Configuration



Optical Input & Output



Electrical Input & Output

6 Notices

Jura firmware development utilizes components under the following licenses:

1. XMOS PUBLIC LICENCE: Version 1, available at www.xmos.ai/license-agreements/
2. The MIT License, available at www.github.com/microsoft/uf2/blob/master/LICENSE.txt. Copyright © Microsoft Corporation

Unmodified USB Audio 2.0 Device Software source code is available from www.xmos.ai under XMOS PUBLIC LICENCE: Version 1.

7 Revision History

Revision History	
Revision	Changes
R1 JUNE 2023	• Initial version.
R2 OCT 2023	• Updated description for executing SCS scripts

Contacting Cirrus Logic Support

For all product questions and inquiries, contact a Cirrus Logic Sales Representative.

To find the one nearest you, go to www.cirrus.com.

IMPORTANT NOTICE

The products and services of Cirrus Logic International (UK) Limited; Cirrus Logic, Inc.; and other companies in the Cirrus Logic group (collectively either "Cirrus Logic" or "Cirrus") are sold subject to Cirrus Logic's terms and conditions of sale supplied at the time of order acknowledgment, including those pertaining to warranty, indemnification, and limitation of liability. Software is provided pursuant to applicable license terms. Cirrus Logic reserves the right to make changes to its products and specifications or to discontinue any product or service without notice. Customers should therefore obtain the latest version of relevant information from Cirrus Logic to verify that the information is current and complete. Testing and other quality control techniques are utilized to the extent Cirrus Logic deems necessary. Specific testing of all parameters of each device is not necessarily performed. In order to minimize risks associated with customer applications, the customer must use adequate design and operating safeguards to minimize inherent or procedural hazards. Cirrus Logic is not liable for applications assistance or customer product design. The customer is solely responsible for its overall product design, end-use applications, and system security, including the specific manner in which it uses Cirrus Logic components. Certain uses or product designs may require an intellectual property license from a third party. Features and operations described herein are for illustrative purposes only and do not constitute a suggestion or instruction to adopt a particular product design or a particular mode of operation for a Cirrus Logic component.

CERTAIN APPLICATIONS USING SEMICONDUCTOR PRODUCTS MAY INVOLVE POTENTIAL RISKS OF DEATH, PERSONAL INJURY, OR SEVERE PROPERTY OR ENVIRONMENTAL DAMAGE ("CRITICAL APPLICATIONS"). CIRRUS LOGIC PRODUCTS ARE NOT DESIGNED, AUTHORIZED OR WARRANTED FOR USE IN PRODUCTS SURGICALLY IMPLANTED INTO THE BODY, AUTOMOTIVE SAFETY OR SECURITY DEVICES, NUCLEAR SYSTEMS, LIFE SUPPORT PRODUCTS OR OTHER CRITICAL APPLICATIONS. INCLUSION OF CIRRUS LOGIC PRODUCTS IN SUCH APPLICATIONS IS UNDERSTOOD TO BE FULLY AT THE CUSTOMER'S RISK AND CIRRUS LOGIC DISCLAIMS AND MAKES NO WARRANTY, EXPRESS, STATUTORY OR IMPLIED, INCLUDING THE IMPLIED WARRANTIES OF MERCHANTABILITY AND FITNESS FOR PARTICULAR PURPOSE, WITH REGARD TO ANY CIRRUS LOGIC PRODUCT THAT IS USED IN SUCH A MANNER. IF THE CUSTOMER OR CUSTOMER'S CUSTOMER USES OR PERMITS THE USE OF CIRRUS LOGIC PRODUCTS IN CRITICAL APPLICATIONS, CUSTOMER AGREES, BY SUCH USE, TO FULLY INDEMNIFY CIRRUS LOGIC, ITS OFFICERS, DIRECTORS, EMPLOYEES, DISTRIBUTORS AND OTHER AGENTS FROM ANY AND ALL LIABILITY, INCLUDING ATTORNEYS' FEES AND COSTS, THAT MAY RESULT FROM OR ARISE IN CONNECTION WITH THESE USES.

This document is the property of Cirrus Logic, and you may not use this document in connection with any legal analysis concerning Cirrus Logic products described herein. No license to any technology or intellectual property right of Cirrus Logic or any third party is granted herein, including but not limited to any patent right, copyright, mask work right, or other intellectual property rights. Any provision or publication of any third party's products or services does not constitute Cirrus Logic's approval, license, warranty or endorsement thereof. Cirrus Logic gives consent for copies to be made of the information contained herein only for use within your organization with respect to Cirrus Logic integrated circuits or other products of Cirrus Logic, and only if the reproduction is without alteration and is accompanied by all associated copyright, proprietary and other notices and conditions (including this notice). This consent does not extend to other copying such as copying for general distribution, advertising or promotional purposes, or for creating any work for resale. This document and its information is provided "AS IS" without warranty of any kind (express or implied). All statutory warranties and conditions are excluded to the fullest extent possible. No responsibility is assumed by Cirrus Logic for the use of information herein, including use of this information as the basis for manufacture or sale of any items, or for infringement of patents or other rights of third parties. Cirrus Logic, Cirrus, the Cirrus Logic logo design, and SoundClear are among the trademarks of Cirrus Logic. Other brand and product names may be trademarks or service marks of their respective owners.

Copyright © 2023 Cirrus Logic, Inc. and Cirrus Logic International Semiconductor Ltd. All rights reserved.