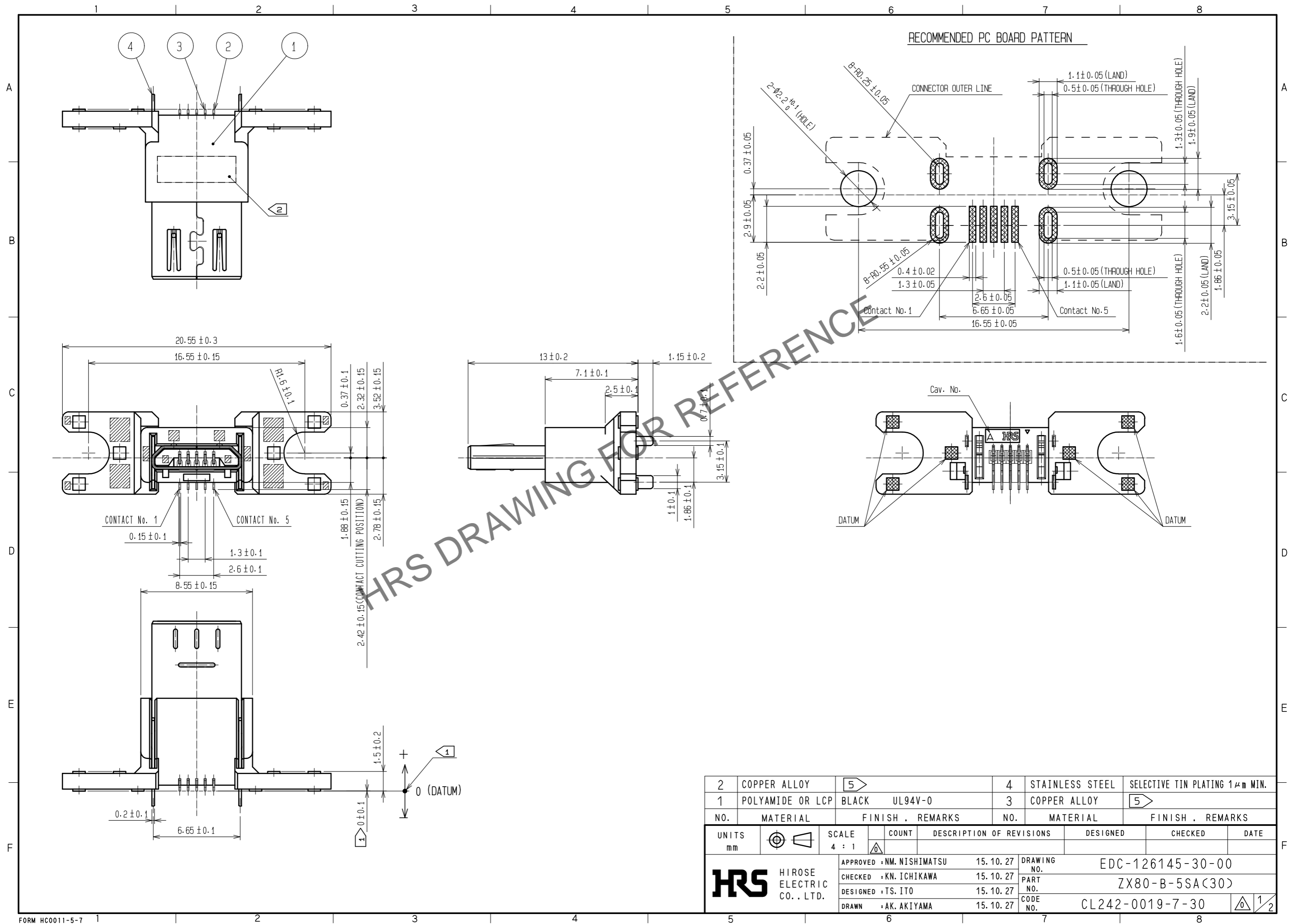





Dec.1.2025 Copyright 2025 HIROSE ELECTRIC CO., LTD. All Rights Reserved.
In case of consideration for using Automotive equipment / device which demand high reliability, kindly contact our sales window correspondents.

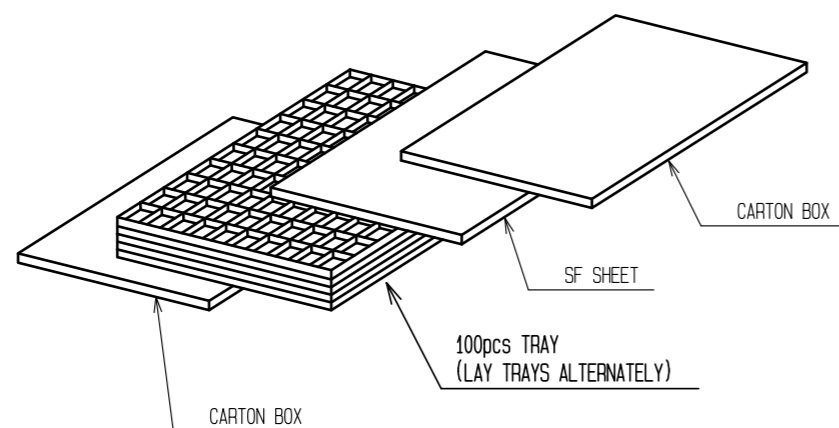


2	COPPER ALLOY	<div>5</div>		4	STAINLESS STEEL	SELECTIVE TIN PLATING 1μm MIN.			
1	POLYAMIDE OR LCP	BLACK	UL94V-0	3	COPPER ALLOY	<div>5</div>			
NO.	MATERIAL	FINISH , REMARKS			NO.	MATERIAL	FINISH , REMARKS		
UNITS mm		SCALE 4 : 1	<div>COUNT</div> <div></div>	DESCRIPTION OF REVISIONS		DESIGNED	CHECKED	DATE	
<div>HRSHIROSE ELECTRIC CO., LTD.</div>		APPROVED : NM. NISHIMATSU	15. 10. 27	DRAWING NO.		EDC-126145-30-00			
		CHECKED : KN. ICHIKAWA	15. 10. 27	PART NO.		ZX80-B-5SA(30)			
		DESIGNED : TS. ITO	15. 10. 27	CODE NO.		CL242-0019-7-30			
		DRAWN : AK. AKIYAMA	15. 10. 27			<div><div></div><div>1/2</div></div>			

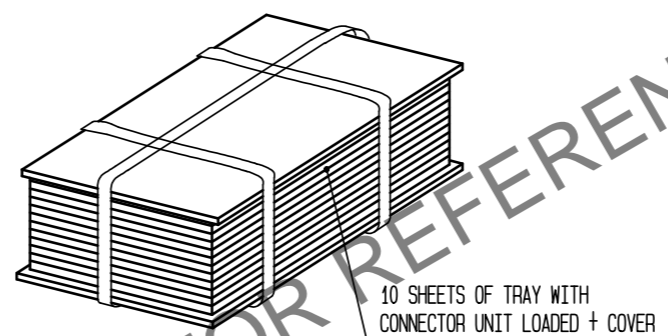
Dec.1.2025 Copyright 2025 HIROSE ELECTRIC CO., LTD. All Rights Reserved.
In case of consideration for using Automotive equipment / device which demand high reliability, kindly contact our sales window correspondents.

3 FIG-2 DRAWING FOR PACKING(AT 2000 pcs PACKING.)
THIS IS ONE EXAMPLE OF PACKING METHOD, AND IT MAY CHANGE WITHOUT
ANY NOTICE, DEPENDING ON VOLUME.

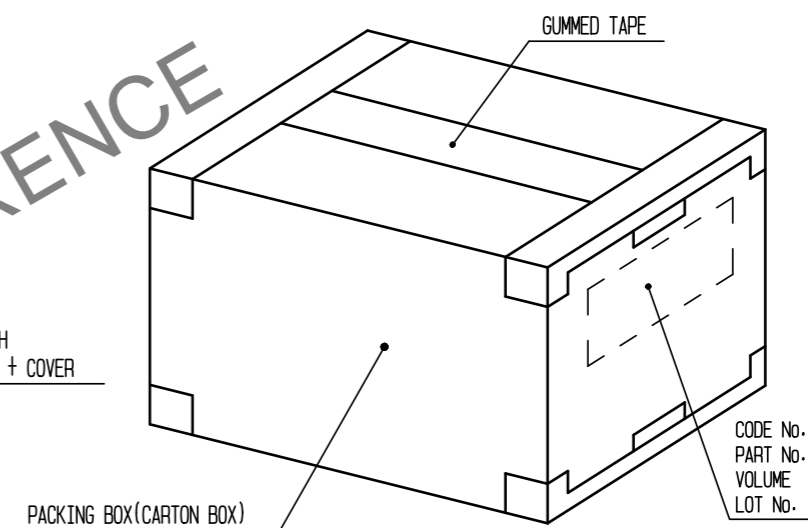
1. STORE CONNECTORS IN A TRAY.



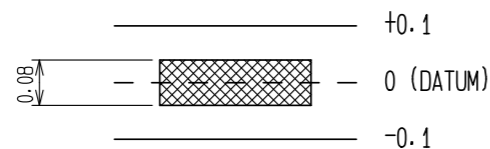
2. BAND TRAYS AS SHOWN BELOW.




3. STORE 2 UNITS OF BANDED TRAY INTO A CARTON BOX(K-1)
(STORE A BOUNDARY PLATE ON TOP OF THE SURFACE, THEN CLOSE
THE BOX BY STICKING GUMMED TAPE IN FOUR PARTS)



NOTES. 1 DIMENSIONS OF SMT RANGE AND CO-PLANARITY ARE AS SHOWN BEROW.



- 2 LOT No. SHALL BE INDICATED AT THE POSITION AS SHOWN.
3 THIS PRODUCT IS TRAY PACKING, AND 100 CONNECTORS FOR EACH TRAY.
MINIMUM ORDER QUANTITY WILL BE 100 pcs PER UNIT.
4 THE SHADED AREAS  SHOW LOCATIONS OF EJECTOR PINS.
5 PLATING
CONTACT AREA : GOLD 0.75μm MIN.
READ AREA : GOLD 0.03μm MIN.
UNDER PLATING: NICKEL 2μm MIN.

HRS

DRAWING NO.	EDC-126145-30-00
PART NO.	ZX80-B-5SA(30)
CODE NO.	CL242-0019-7-30

2/2