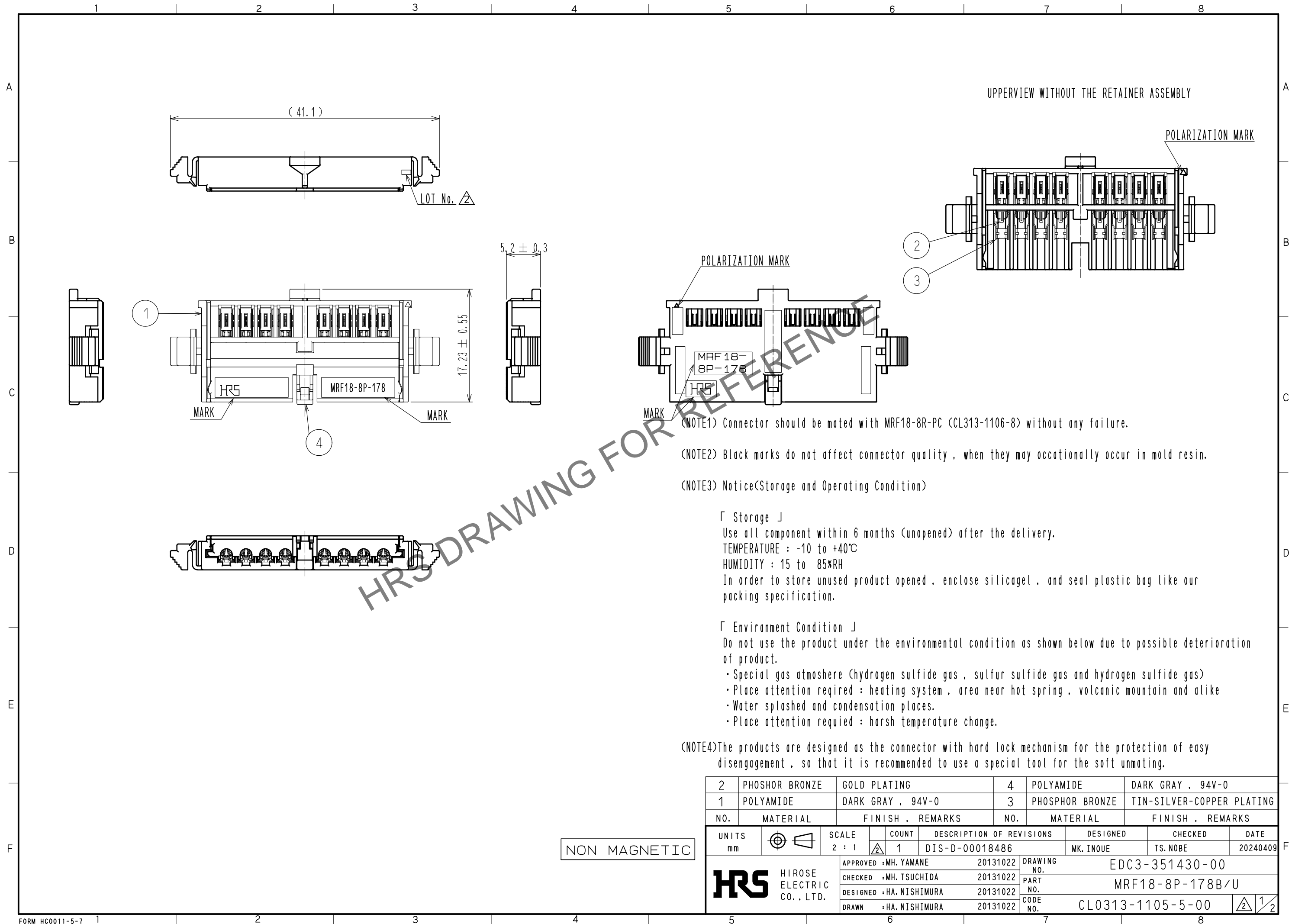


Dec.1.2025 Copyright 2025 HIROSE ELECTRIC CO., LTD. All Rights Reserved.
In case of consideration for using Automotive equipment / device which demand high reliability, kindly contact our sales window correspondents.



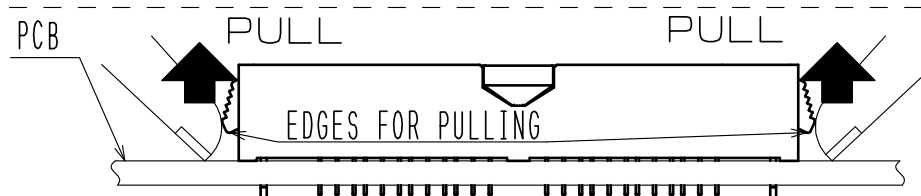
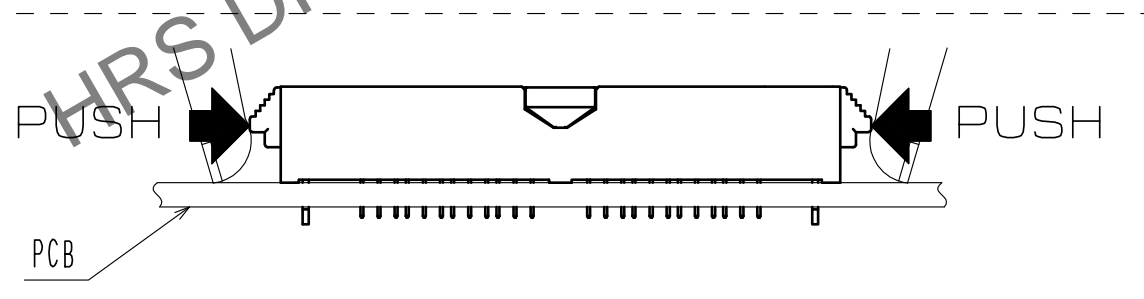
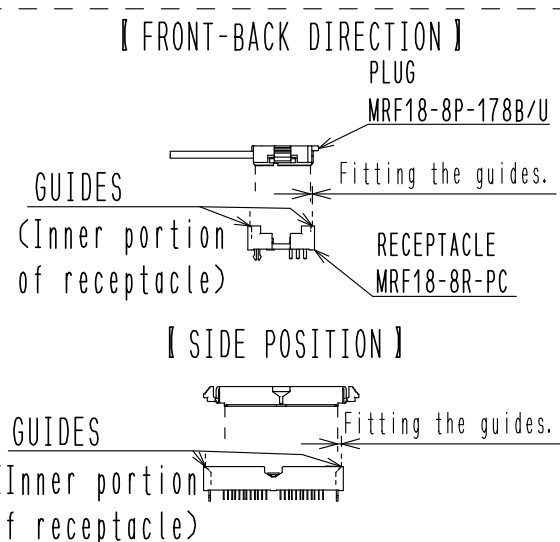
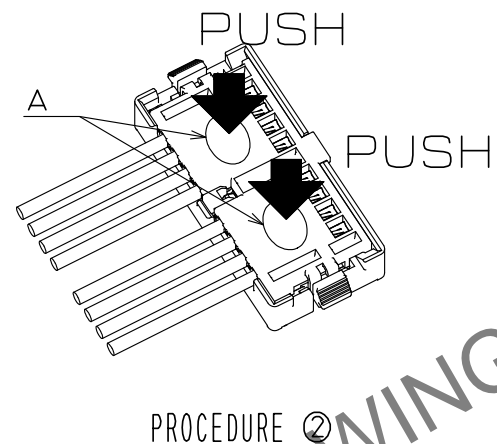
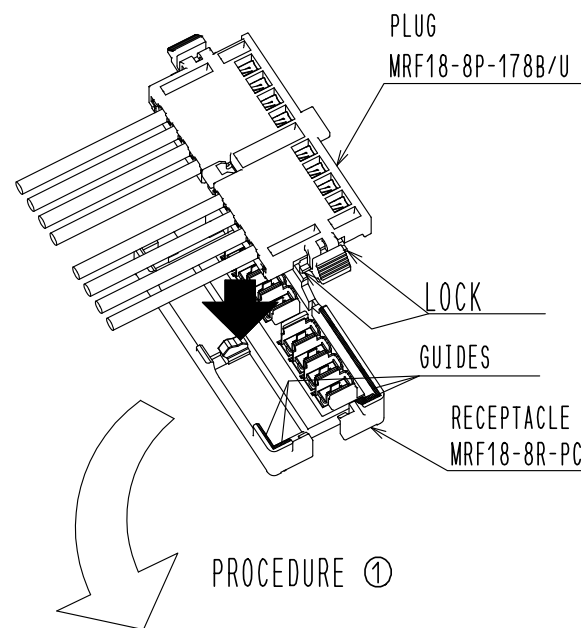
Dec.1.2025 Copyright 2025 HIROSE ELECTRIC CO., LTD. All Rights Reserved.
In case of consideration for using Automotive equipment / device which demand high reliability, kindly contact our sales window correspondents.

OPERATION MANUAL FOR MRF18 SERIES

MATING PROCEDURE

- ①Insert the plug into the receptacle along the guides of the corner edges of receptacle.
- ②Push two center areas of the plug , which shown is the drawing below.
You can get the click feeling when the lock of the plug is set.

NOTE : Push the plug completely to the end.



Pull up the front lever and the edges of lock levers of the plug vertically at the same time , catching and pushing the edges of lock levers with finger at the both sides

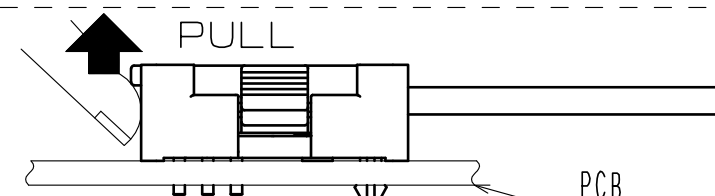
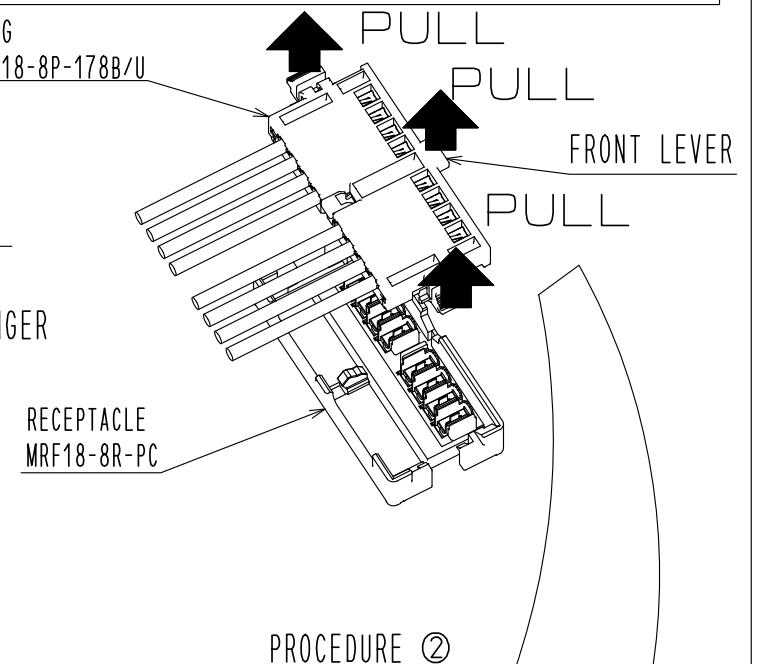
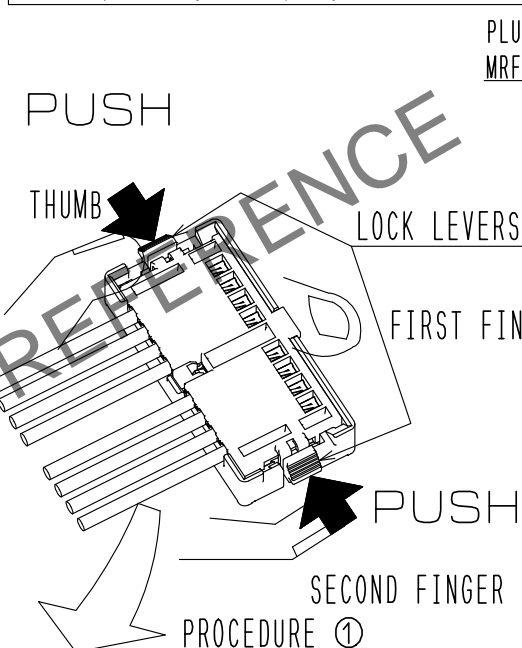
Please be careful not hurt nails and others because the unmating force is strong when pulling the plug.

UNMATING PROCEDURE

- ①Push the lock levers of the plug at the both sides in the direction of the arrows.
- ②Pull up the front lever of the plug vertically in the condition of pushing both side lock levers.

NOTE : Push the lock levers of the plug as completely as possible.

Please be careful not hurt nails and others because the unmating force is strong when pulling the plug.



HRS

DRAWING NO.	EDC3-351430-00
PART NO.	MRF18-8P-178B/U
CODE NO.	CL0313-1105-5-00

2/2