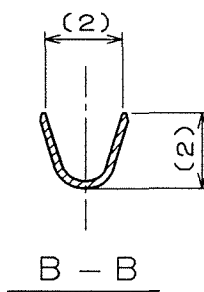
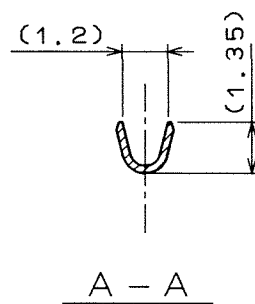
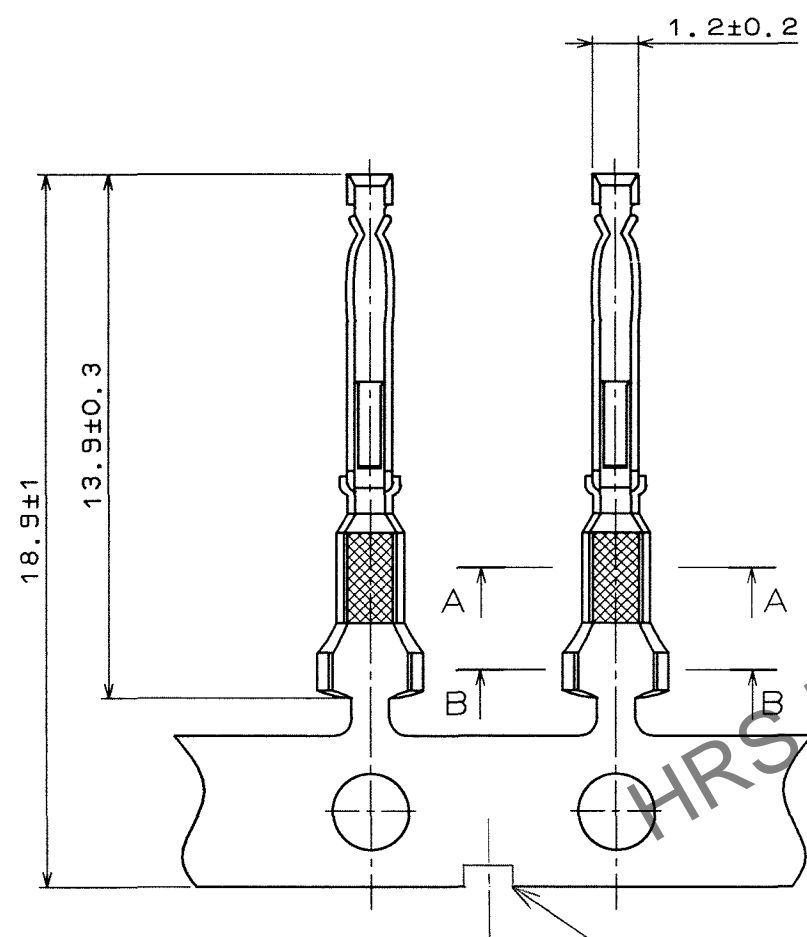
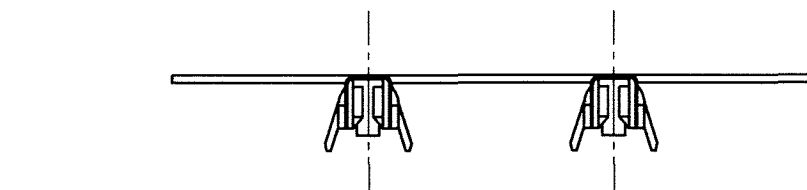


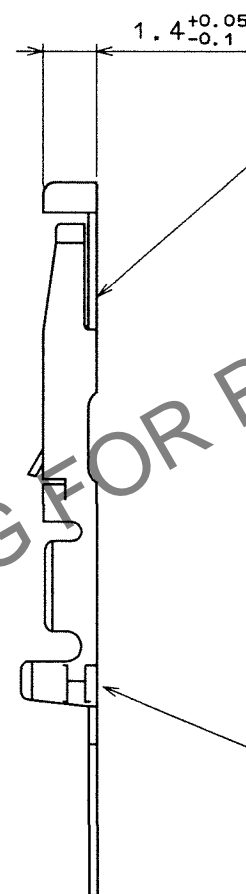
Jan.1.2026 Copyright 2026 HIROSE ELECTRIC CO., LTD. All Rights Reserved.  
In case of consideration for using Automotive equipment / device which demand high reliability, kindly contact our sales window correspondents.

TO
R

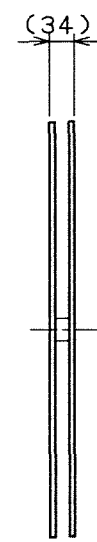
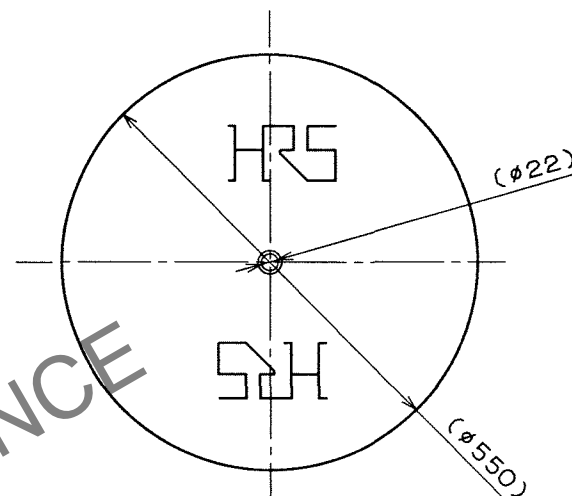
A  
B  
C  
D  
E  
F



(REVISED CONFIGURATION)



(2) REEL (10:1)



NOTE 1 APPLICABLE WIRE : AWG#24~28.  
2 CRIMPING CONDITION AS CRIMP HEIGHT IS SPECIFIED INDIVIDUALLY DEPENDING ON WIRE USED.

1	PHOSPHOR BRONZE	SILVER PLATING (N=10000)	2	CARTON	(REEL)
NO.	MATERIAL	FINISH, REMARKS	NO.	MATERIAL	FINISH, REMARKS
CODE NO. (OLD)			DRAWN	DESIGNED	CHECKED
			H. Kawaguchi	H. Kishi	M. Goshida
			96.8.24	96.8.24	96.8.29
DRAWING NO.			PART NO.		
EDC3-009287			RP13A-SC-222		
UNITS			CODE NO.		
mm			CL113-0151-0		
HRS HIROSE ELECTRIC CO., LTD.			1/1		