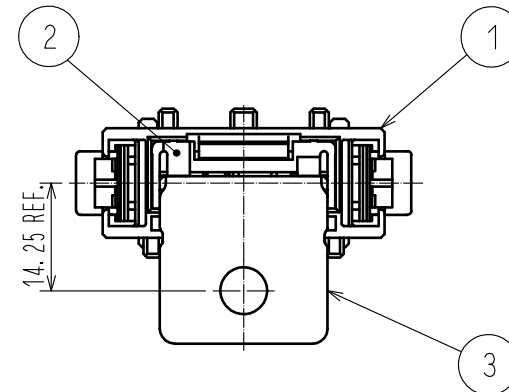
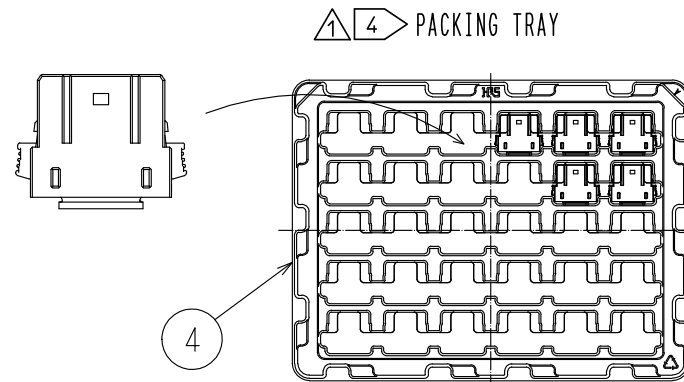
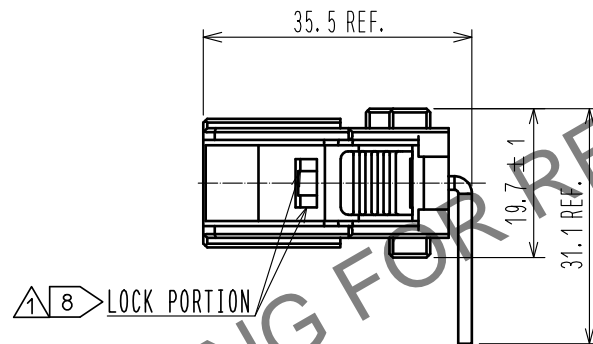
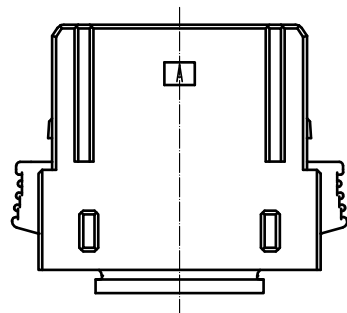
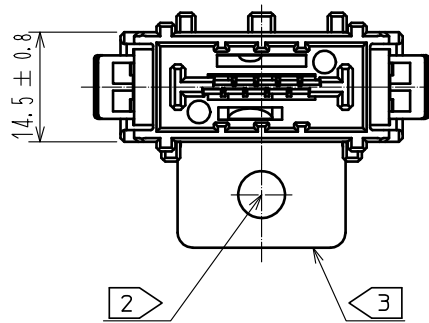
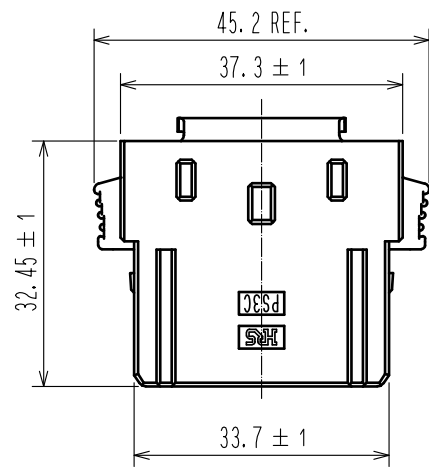


Dec.1.2025 Copyright 2025 HIROSE ELECTRIC CO., LTD. All Rights Reserved.
In case of consideration for using Automotive equipment / device which demand high reliability, kindly contact our sales window correspondents.



| | | | | | | |
|---------------------------|----------|---------------------------|------------|--|----------|-------------------------|
| 2 | PBT | BLACK | UL94V-0 | 4 | PP | |
| 1 | PBT | RED | UL94V-0 | 3 | COPPER | SILVER PLATING 3 μm MIN |
| NO. | MATERIAL | FINISH . REMARKS | | NO. | MATERIAL | FINISH . REMARKS |
| UNITS mm | | SCALE 1 : 1 | COUNT 4 | DESCRIPTION OF REVISIONS DIS-E-00000029 | | DESIGNED WR. YAMADA |
| HIROSE ELECTRIC CO., LTD. | | APPROVED : NM. NISHIMATSU | 14. 07. 23 | DRAWING NO. EDC3-128555-00 | | |
| | | CHECKED : NM. NISHIMATSU | 14. 07. 23 | PART NO. PS3C-B-1UP | | |
| | | DESIGNED : WR. YAMADA | 14. 07. 22 | CODE NO. CL236-1065-8-00 | | |
| | | DRAWN : WR. YAMADA | 14. 07. 22 | | | |
| | | | | | | 1/2 |

Dec.1.2025 Copyright 2025 HIROSE ELECTRIC CO., LTD. All Rights Reserved.
In case of consideration for using Automotive equipment / device which demand high reliability, kindly contact our sales window correspondents.

6 CONDITION OF SAFETY STANDARD(UL, C-UL, TUV STANDARD)

6
TABLE 1. UL, C-UL CONDITION

| | CONDITION 1 | CONDITION 2 |
|------------------------|----------------|----------------|
| CURRENT VOLTAGE(AC/DC) | 600V | |
| CURRENT RATING | 100A | 150A |
| CABLE | 14 TO 22sq(※1) | 38 TO 50sq(※1) |
| CREEPAGE DISTANCE(※2) | MIN:3.2mm | |
| CLEARANCE DISTANCE(※2) | MIN:3.2mm | |

6
TABLE 2. TUV CONDITION

| | CONDITION I | CONDITION II | CONDITION III |
|------------------------|---|--------------|---------------|
| CURRENT VOLTAGE(AC/DC) | 800V | 600V | 1000V |
| CURRENT RATING | 100A(CABLE 14 TO 22sq ※1) 125A(CABLE 38sq ※1) 150A(CABLE 50sq ※1) | | |
| OVER VOLTAGE CATEGORY | II | III | |
| POLLUTION DEGREE | 3 | | |
| CREEPAGE DISTANCE(※2) | MIN:12.6mm | MIN:12.6mm | MIN:16mm |
| CLEARANCE DISTANCE(※2) | MIN:6mm | MIN:6mm | MIN:8mm |
| INSULATION SYSTEM | BASIC INSULATION(PANEL HAS THE EARTH) | | |

※1 : AS SCREWS AND CRIMP TERMINAL ATTACHED WITH POWER CONTACT HAVE AN IMPACT ON THE CREEPAGE DISTANCE AND THE CLEARANCE DISTANCE.PLEASE USE RECOMMENDED SCREWS AND CRIMP TERMINALS. IN CASE YOU USE CABLES OTHER THAN FOLLOWING RECOMMENDED SCREWS AND CONTACTS, PLEASE BE CAREFUL THAT THE CREEPAGE DISTANCE AND THE CLEARANCE DISTANCE MEET THE STANDARD OF UL, C-UL, TUV.

※2 : THE COVERAGE OF THE CREEPAGE DISTANCE AND THE CLEARANCE DISTANCE IS AS FOLLOWS.
-BETWEEN PLUS POWER SUPPLY CONTACT AND MINUS POWER SUPPLY CONTACT
-BETWEEN PLUS CRIMP TERMINAL AND MINUS CRIMP TERMINAL
-BETWEEN POWER CONTACT AND PANEL
-BETWEEN CRIMP TERMINAL AND PANEL
-BETWEEN SCREWS (ATTACHEHD WITH POWER CONTACT) AND PANEL

NOTE 1. THE MATING PARTNER OF THIS PRODUCT IS PS3C-B-1US(CCL236-1063-2-00).

2 PLEASE USE M6 SCREW AND NUT FOR MOUNTING REF NO.③ AND THE CRIMP TERMINAL. THE RECOMMENDED SCREW AND CRIMP TERMINAL IS AS FOLLOWS.

<SET1>
-RECOMMENDED SCREW : JIS B 1188 SPRING WASHER + CROSS RECESSED PAN HEAD SCREW WITH CAPTIVE POLISHED CIRCULAR WASHER M6 X 12
-RECOMMENDED NUT : JIS B 1181 M6 STYLE 1

<SET2>
-RECOMMENDED HEXAGON HEAD SCREW : JIS B 1180 HEXAGON HEAD SCREW M6 X 14
-RECOMMENDED NUT : HARD LOCK INDUSTRY CO.,LTD. HLN-R M6

<RECOMMENDED CRIMP TERMINAL>
CABLE 14sq : JIS C 2805 R14-6
CABLE 22sq : JIS C 2805 R22-6
CABLE 38sq : MANUFACTURED BY NICHIFU CO.,LTD R38-6S
CABLE 50sq : MANUFACTURED BY NICHIFU CO.,LTD R60-6S

3 SINCE THE POWER CONTACTS ARE SILVER PLATED, THEY MAY REACT WITH SULFIDE IN THE ATOMOSPHER TO CHANGE THE COLOUR TO BLACKISH BROWN.

1 4 THE SALES UNIT IS ONE PIECE AND ONE BOX IS 60 PIECES. PLEASE YOUR ORDER IN UNIT OF 60 PIECES. PLEASE REFER ETAP-E3129.

5. THIS PRODUCT IS RECOMMENDED THE COVER 'PS3C-1UP-CVL(236-1066-0-00)' THAT COVERS THE POWER SUPPLY TERMINAL FOR THE SAFETY. IF THE COVER IS NOT BE USED, PLEASE PREPARE THE SHRINK TUBE OR
6 LIKE COVERING THE POWER SUPPLY TERMINAL.

THIS ITEM IS PLANNING TO BE APPROVED BY SASFETY STANDARD(UL, C-UL, TUV STANDARD) UNDER THE CONDITION OF TABLE 1 AND TABLE 2
SAFETY STANDARD IS DEFERRENT UP TO THE APPLIED RATED VOLTAGE AND CURRENT
PLEASE SEE THE TABLE 1 AND TABLE 2.

7. THE POWER CONTACT OF THIES PRODUCT IS NOT APPLICABLE FOR HOT-SWAP. IT CAN NOT BE USED TO INTERRUPT THE POWER.

1 8 PLEASE MAKE SURE THE LOCK PORTION AND MATING COMPLETELY WITH PS3C-B-1US.

HRS

| | | | |
|-------------|-----------------|---|-----|
| DRAWING NO. | EDC3-128555-00 | | |
| PART NO. | PS3C-B-1UP | | |
| CODE NO. | CL236-1065-8-00 | 1 | 2/2 |