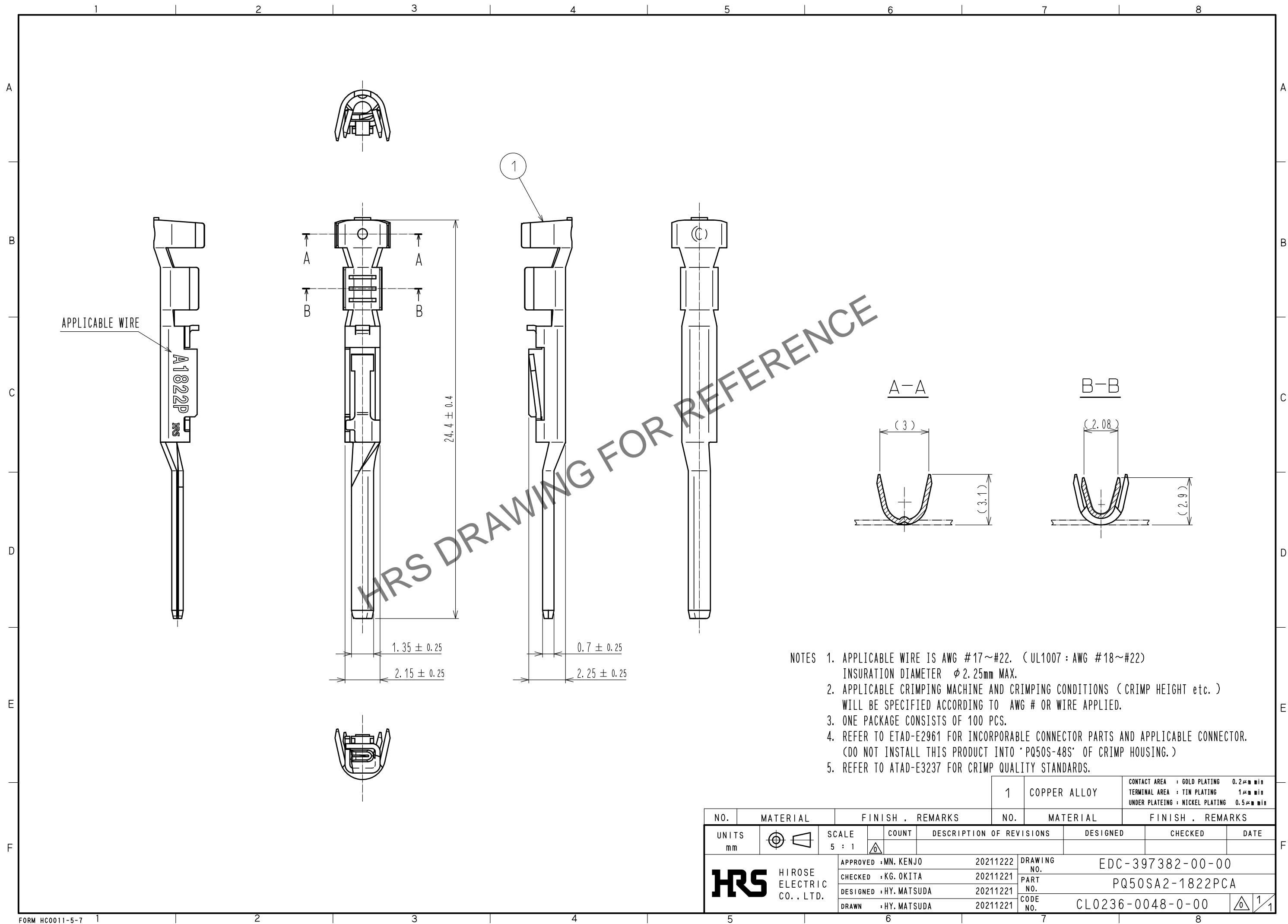
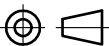





Jan.1.2026 Copyright 2026 HIROSE ELECTRIC CO., LTD. All Rights Reserved.
In case of consideration for using Automotive equipment / device which demand high reliability, kindly contact our sales window correspondents.



- NOTES
1. APPLICABLE WIRE IS AWG #17~#22. (UL1007 : AWG #18~#22)
INSURATION DIAMETER ϕ 2.25mm MAX.
 2. APPLICABLE CRIMPING MACHINE AND CRIMPING CONDITIONS (CRIMP HEIGHT etc.)
WILL BE SPECIFIED ACCORDING TO AWG # OR WIRE APPLIED.
 3. ONE PACKAGE CONSISTS OF 100 PCS.
 4. REFER TO ETAD-E2961 FOR INCORPORABLE CONNECTOR PARTS AND APPLICABLE CONNECTOR.
(DO NOT INSTALL THIS PRODUCT INTO 'PQ50S-48S' OF CRIMP HOUSING.)
 5. REFER TO ATAD-E3237 FOR CRIMP QUALITY STANDARDS.

| | | | | | | | | | |
|---|---|----------------|---|--------------------------|------------------------------|----------|--|------------------|------|
| | | | | 1 | COPPER ALLOY | | CONTACT AREA : GOLD PLATING 0.2μm min TERMINAL AREA : TIN PLATING 1μm min UNDER PLATING : NICKEL PLATING 0.5μm min | | |
| NO. | MATERIAL | | FINISH , REMARKS | | NO. | MATERIAL | | FINISH , REMARKS | |
| UNITS mm |  | SCALE 5 : 1 | COUNT | DESCRIPTION OF REVISIONS | | DESIGNED | | CHECKED | DATE |
| | | |  | | | | | | |
| | | | APPROVED : MN. KENJO 20211222 | | DRAWING NO. EDC-397382-00-00 | | | | |
| | | | CHECKED : KG. OKITA 20211221 | | PART NO. PQ50SA2-1822PCA | | | | |
| | | | DESIGNED : HY. MATSUDA 20211221 | | CODE NO. CL0236-0048-0-00 | | | | |
|  HIROSE ELECTRIC CO., LTD. | DRAWN : HY. MATSUDA 20211221 | | | | | |  1/1 | | |