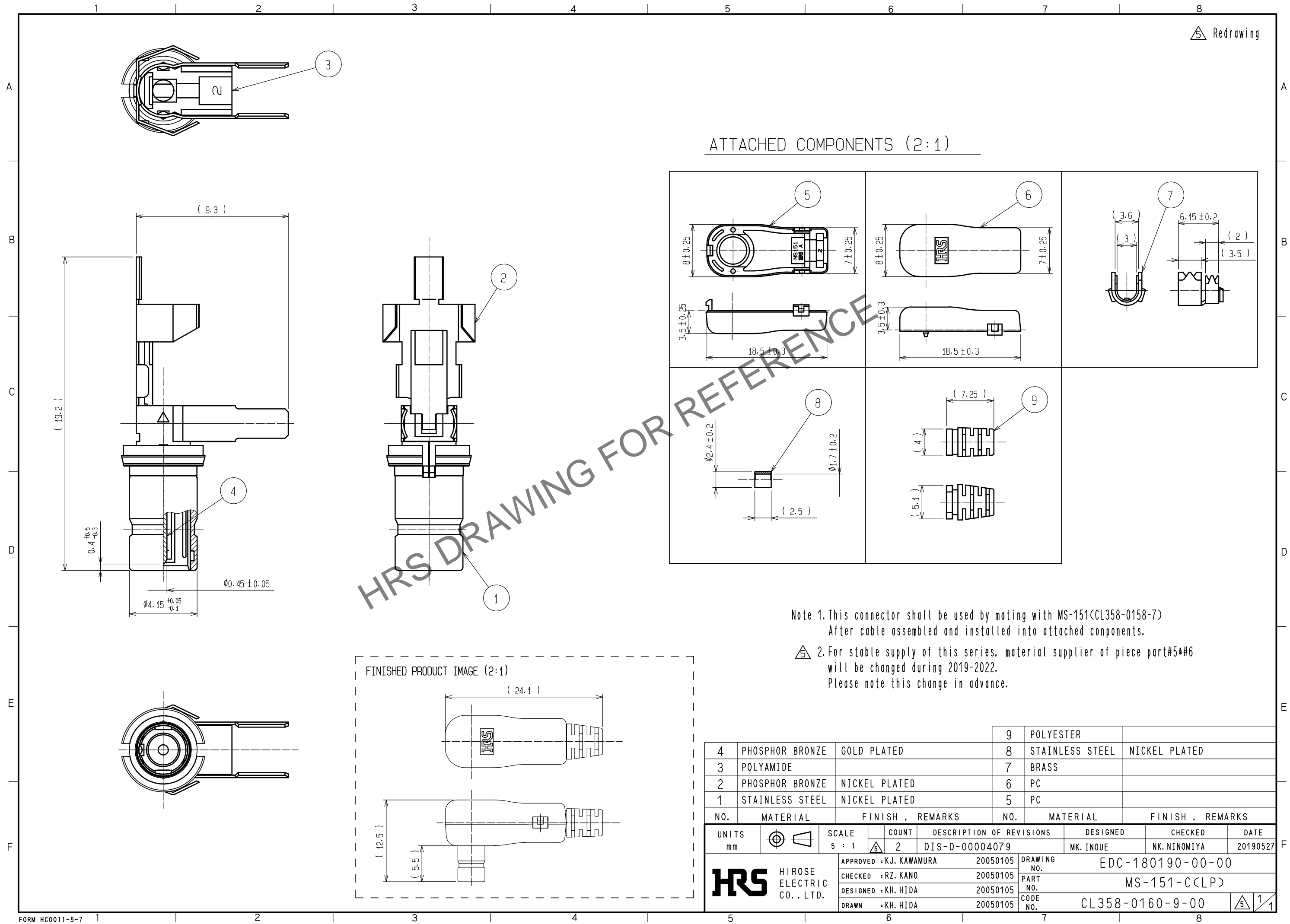
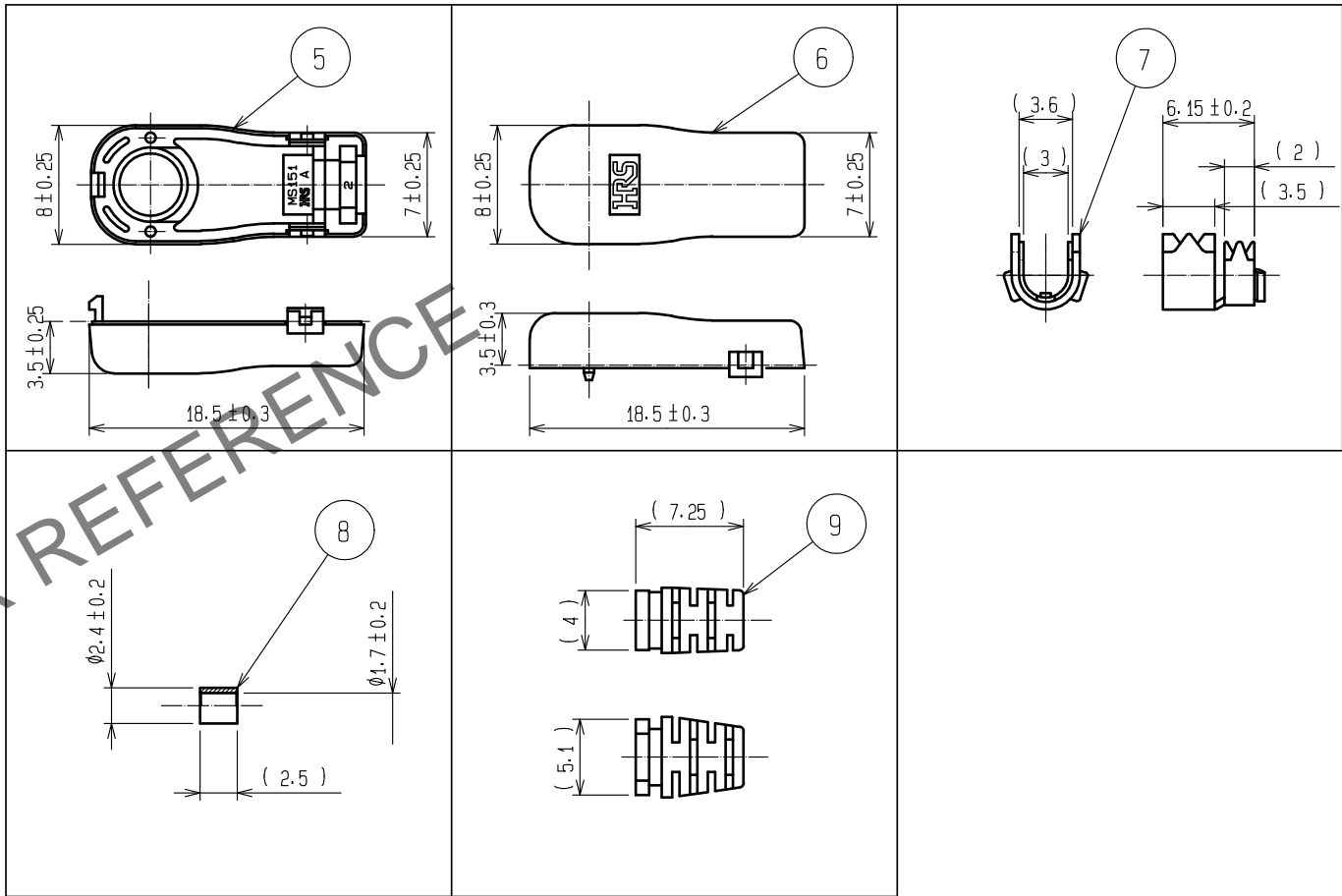


Feb.1.2026 Copyright 2026 HIROSE ELECTRIC CO., LTD. All Rights Reserved.
In case of consideration for using Automotive equipment / device which demand high reliability, kindly contact our sales window correspondents.



Redrawing

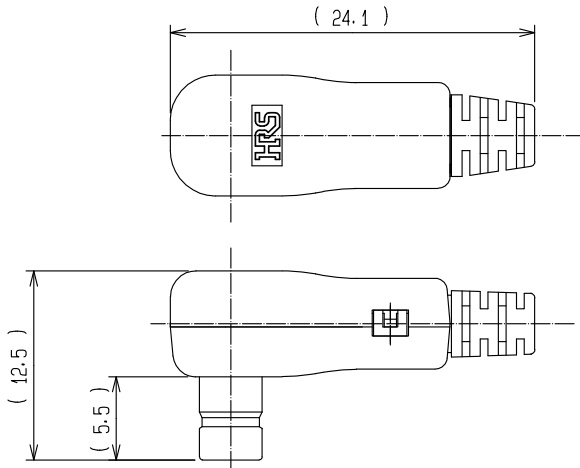
ATTACHED COMPONENTS (2:1)



Note 1. This connector shall be used by mating with MS-151 (CL358-0158-7)
After cable assembled and installed into attached components.

2. For stable supply of this series, material supplier of piece part #5 & #6
will be changed during 2019-2022.
Please note this change in advance.

FINISHED PRODUCT IMAGE (2:1)



4	PHOSPHOR BRONZE	GOLD PLATED	9	POLYESTER	
3	POLYAMIDE		8	STAINLESS STEEL	NICKEL PLATED
2	PHOSPHOR BRONZE	NICKEL PLATED	7	BRASS	
1	STAINLESS STEEL	NICKEL PLATED	6	PC	
			5	PC	
NO.	MATERIAL	FINISH . REMARKS	NO.	MATERIAL	FINISH . REMARKS
UNITS mm		SCALE 5 : 1	COUNT 2	DESCRIPTION OF REVISIONS DIS-D-00004079	DESIGNED MK. INOUE
HIROSE ELECTRIC CO., LTD.		APPROVED : KJ. KAWAMURA	20050105	DRAWING NO.	EDC-180190-00-00
		CHECKED : RZ. KANO	20050105	PART NO.	MS-151-C (LP)
		DESIGNED : KH. HIDA	20050105	CODE NO.	CL358-0160-9-00
		DRAWN : KH. HIDA	20050105		
					DATE 20190527