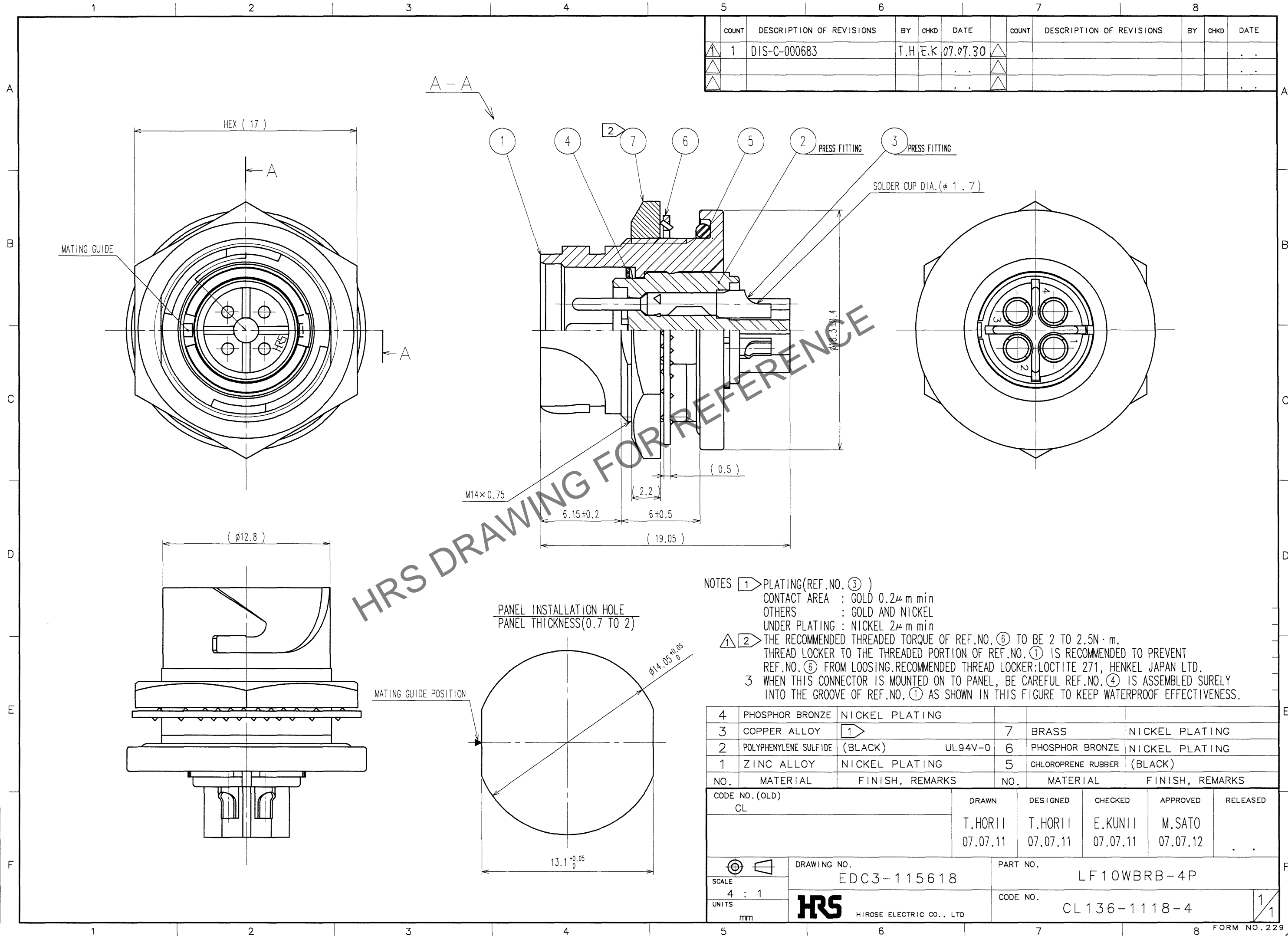


Dec.1.2025 Copyright 2025 HIROSE ELECTRIC CO., LTD. All Rights Reserved.  
In case of consideration for using Automotive equipment / device which demand high reliability, kindly contact our sales window correspondents.

TO  
R



COUNT	DESCRIPTION OF REVISIONS	BY	CHKD	DATE	COUNT	DESCRIPTION OF REVISIONS	BY	CHKD	DATE
1	DIS-C-000683	T.H	E.K	07.07.30					

NOTES ① PLATING(REF.NO.③ )  
CONTACT AREA : GOLD 0.2 $\mu$ m min  
OTHERS : GOLD AND NICKEL  
UNDER PLATING : NICKEL 2 $\mu$ m min  
② THE RECOMMENDED THREADED TORQUE OF REF.NO.⑥ TO BE 2 TO 2.5N·m.  
THREAD LOCKER TO THE THREADED PORTION OF REF.NO.① IS RECOMMENDED TO PREVENT  
REF.NO.⑥ FROM LOOSING.RECOMMENDED THREAD LOCKER:LOCTITE 271, HENKEL JAPAN LTD.  
③ WHEN THIS CONNECTOR IS MOUNTED ON TO PANEL, BE CAREFUL REF.NO.④ IS ASSEMBLED SURELY  
INTO THE GROOVE OF REF.NO.① AS SHOWN IN THIS FIGURE TO KEEP WATERPROOF EFFECTIVENESS.

4	PHOSPHOR BRONZE	NICKEL PLATING			
3	COPPER ALLOY	①	7	BRASS	NICKEL PLATING
2	POLYPHENYLENE SULFIDE	(BLACK) UL94V-0	6	PHOSPHOR BRONZE	NICKEL PLATING
1	ZINC ALLOY	NICKEL PLATING	5	CHLOROPRENE RUBBER	(BLACK)
NO.	MATERIAL	FINISH, REMARKS	NO.	MATERIAL	FINISH, REMARKS
CODE NO.(OLD) CL			DRAWN	DESIGNED	CHECKED
			T.HORII	T.HORII	E.KUNII
			07.07.11	07.07.11	07.07.11
				APPROVED	RELEASED
				M.SATO	
				07.07.12	
DRAWING NO. EDC3-115618			PART NO. LF10WBRB-4P		
SCALE 4 : 1			CODE NO. CL136-1118-4		
UNITS mm			1/1		