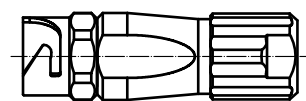
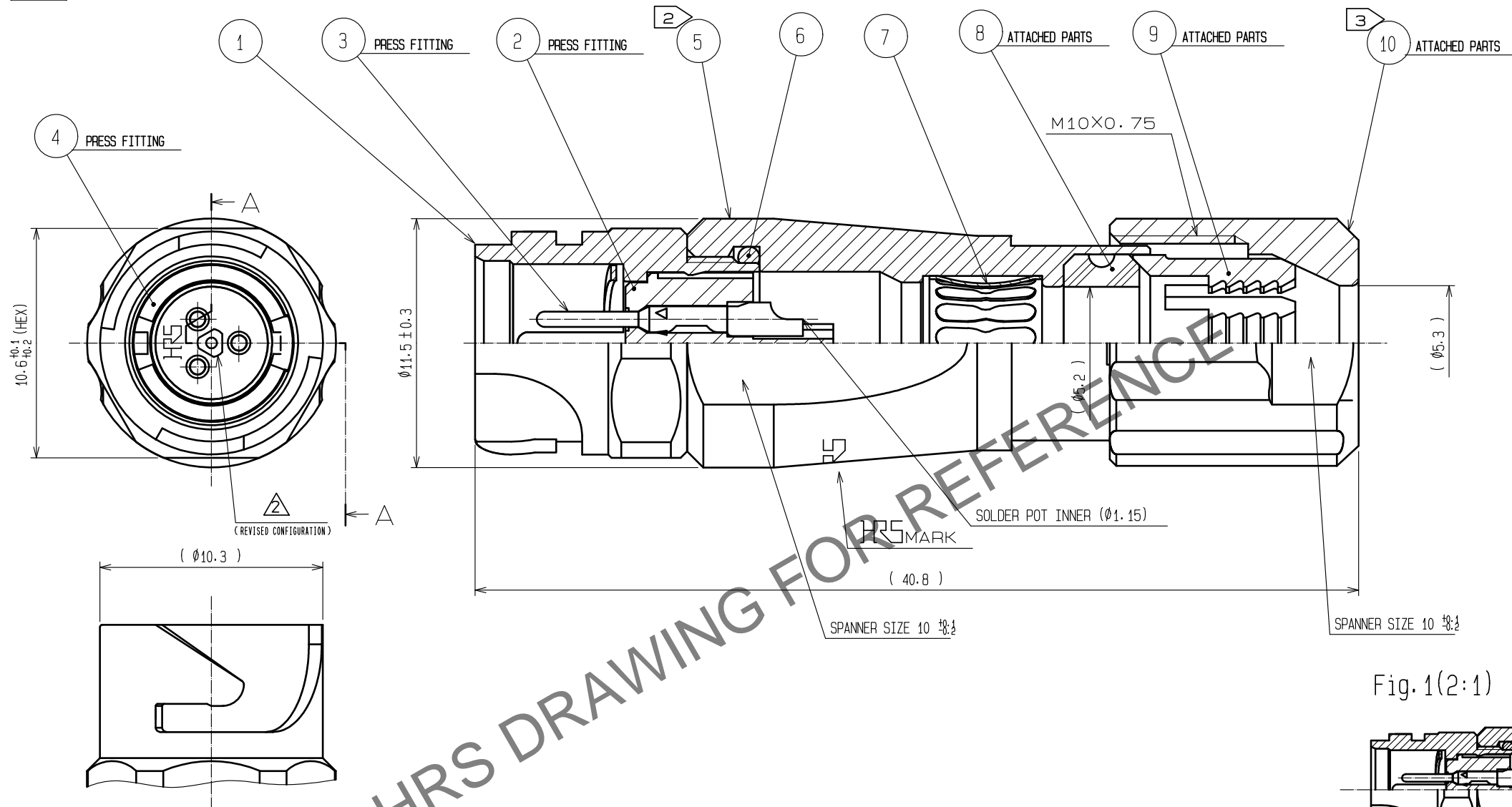


Feb.1.2026 Copyright 2026 HIROSE ELECTRIC CO., LTD. All Rights Reserved.
In case of consideration for using Automotive equipment / device which demand high reliability, kindly contact our sales window correspondents.

Fig.2(1:1)

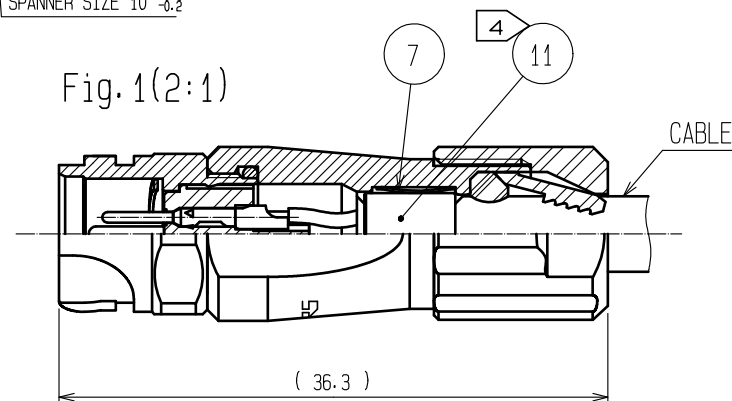


A-A



- NOTES
- 1 PLATING(REF.NO. ③)
CONTACT AREA : GOLD 0.2μm min
OTHERS : GOLD AND NICKEL
UNDER PLATING : NICKEL 2μm min
 - 2 THE RECOMMENDED CLAMP TORQUE OF REF.NO. ⑤ TO BE 1 TO 1.5N·m.
THREAD LOCKER TO THE THREADED PORTION OF REF.NO. ④ IS RECOMMENDED TO PREVENT REF.NO. ⑤ FROM LOOSING.
 - 3 THE RECOMMENDED CLAMP TORQUE OF REF.NO. ⑩ TO BE 0.8 TO 1N·m.
THREAD LOCKER AND LOCK PRIMER TO THE THREADED PORTION M10X0.75 OF REF.NO. ⑤ IS RECOMMENDED TO PREVENT REF.NO. ⑩ FROM LOOSING.
 - 4 RECOMMENDED THREAD LOCKER AND LOCK PRIMER : LOCTITE 263, LOCK PRIMER 7649, HENKEL JAPAN LTD.
 - 4 FASTEN REF.NO. ⑪ TO THE CABLE WITH THE CABLE CRIMPING TOOL.
AND MAKE REF.NO. ⑪ CONTACT WITH REF.NO. ⑦ (REFER TO Fig.1).
REFER TO THE TECHNICAL SPECIFICATION ATAD-C0099 FOR DETAILS.
APPLICABLE CABLE CRIMPING TOOL : HR10A-TC-02(CL150-0041-2)(THE HOLE DIAMETER FOR CRIMPING:Ø5.3)
 - 5 Fig.2 SHOWS THE APPEARANCE AFTER ASSEMBLY.
 - 6 ROTATION EXAMPLES OF REF. NOS. ⑤ AND ⑩ TO ① ARE SHOWN.
 - 7 APPLICABLE CABLE ASSEMBLY FIXTURE : LF07BJ-T01(CL150-0233-3)
CABLE ASSEMBLY FIXTURE IS USED AS A RECEPTACLE STAND OF EXTRACT
AND THE PART No. ① OF AN ASSEMBLY.

Fig.1(2:1)



6	CHLOROPRENE RUBBER	(BLACK)			
5	ZINC ALLOY	NICKEL PLATING	11	BRASS	NICKEL PLATING
4	PHOSPHOR BRONZE	NICKEL PLATING	10	PPS	(NATURAL·BROWN) UL94V-0
3	COPPER ALLOY	①	9	POLYAMIDE	(NATURAL·MILKY WHITE) UL94V-0
2	PPS	(BLACK) UL94V-0	8	CHLOROPRENE RUBBER	(BLACK)
1	ZINC ALLOY	NICKEL PLATING	7	PHOSPHOR BRONZE	NICKEL PLATING
NO.	MATERIAL	FINISH , REMARKS	NO.	MATERIAL	FINISH , REMARKS
UNITS mm	⊕	SCALE 4 : 1	COUNT 3	DESCRIPTION OF REVISIONS DIS-C-00001700	DESIGNED HY. KISHI
HRS HIROSE ELECTRIC CO., LTD.		APPROVED : MR. YOSHIDA	05.01.05	DRAWING NO. EDC3-114150-00	CHECKED HY. KOBAYASHI
		CHECKED : MO. SATOH	05.01.05	PART NO. LF07WBJ-3P	DATE 17.08.11
		DESIGNED : YH. YAMADA	05.01.05	CODE NO. CL136-2003-8-00	
		DRAWN : YH. YAMADA	05.01.05		