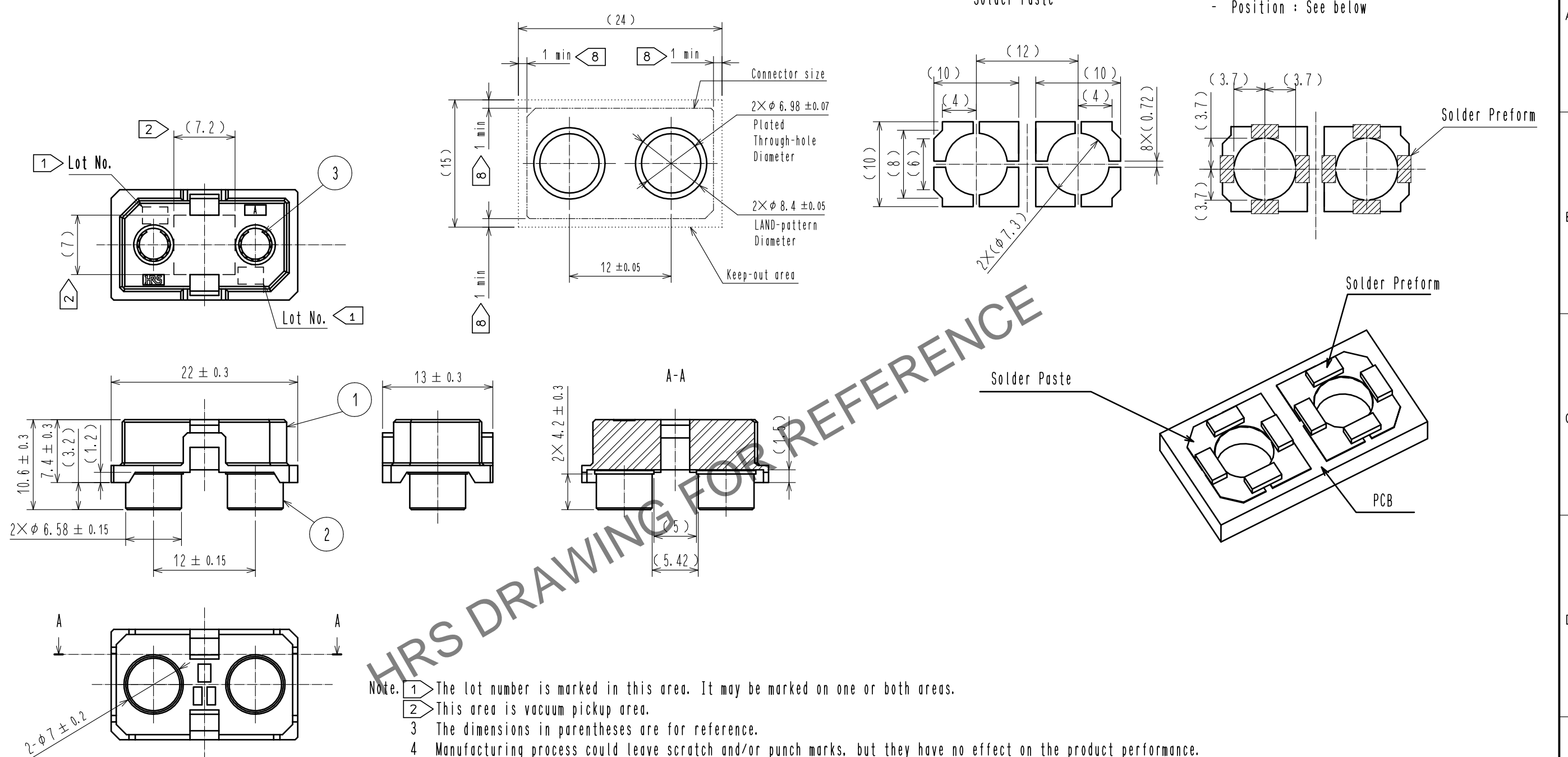


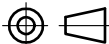



Feb.1.2026 Copyright 2026 HIROSE ELECTRIC CO., LTD. All Rights Reserved.
In case of consideration for using Automotive equipment / device which demand high reliability, kindly contact our sales window correspondents.



- Note.
- 1 The lot number is marked in this area. It may be marked on one or both areas.
 - 2 This area is vacuum pickup area.
 - 3 The dimensions in parentheses are for reference.
 - 4 Manufacturing process could leave scratch and/or punch marks, but they have no effect on the product performance. And the dark spots might occasionally occur on molded plastic.
 - 5 Since silver plating is used for this product, if it is left in the atmosphere for a long time, plating may become drab.
 - 6 Since this product is point symmetry, direction of mounting does not have a rule.
 - 7 This product is RoHS compliant.
 - 8 Please do not mount other devices in this area.
 - 9 Packing for this product is embossed carrier tape packing. (250pcs/RL)
 - 10 The insertion direction of a connector may change.
 - 11 This connector can be soldered as part of the normal SMT process. Please use the solder preform design outlined above. For more detail on this process, please refer to the design guide (EATD-F0804-00).

ing. (250pcs/RL)

				5	Polyester	(Top Cover Tape)
2	Brass	Over Plating : Silver 5.1μm		4	Polystyrene	(Embossed Carrier Tape)
		Under Plating : Nickel 1.3μm		3	Capper alloy	Contact Area : Gold 0.76μm
1	LCP	Gray	UL94V-0			Under Plating : Nickel 1.3μm
NO.	MATERIAL	FINISH . REMARKS		NO.	MATERIAL	FINISH . REMARKS

UNITS mm			SCALE 2 : 1		COUNT	DESCRIPTION OF REVISIONS	DESIGNED	CHECKED	DATE
 HIROSE ELECTRIC CO., LTD.		APPROVED : TM. MATSUO		20220216	DRAWING NO. EDC-339734-00-02				
		CHECKED : TS. OSHIDA		20220215	PART NO. IT-PD-2S-DIR				
		DESIGNED : KM. KUBOTA		20220215	CODE NO. CL0636-0601-0-00				
		DRAWN : KM. KUBOTA		20220215	 1				

5

6

7

8

Feb.1.2026 Copyright 2026 HIROSE ELECTRIC CO., LTD. All Rights Reserved.
In case of consideration for using Automotive equipment / device which demand high reliability, kindly contact our sales window correspondents.

