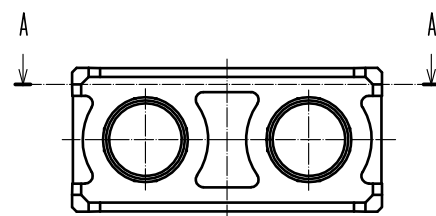
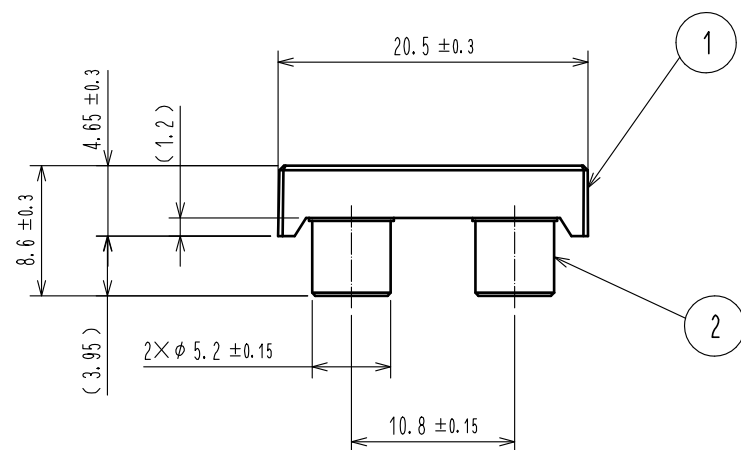
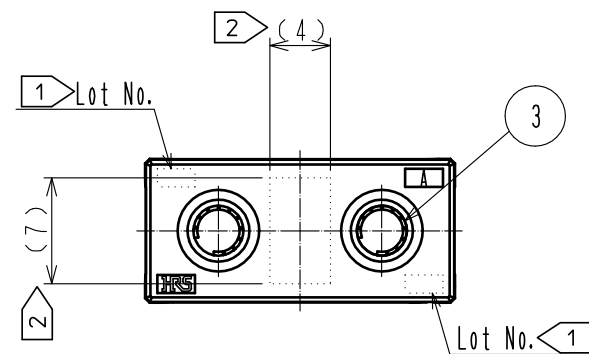
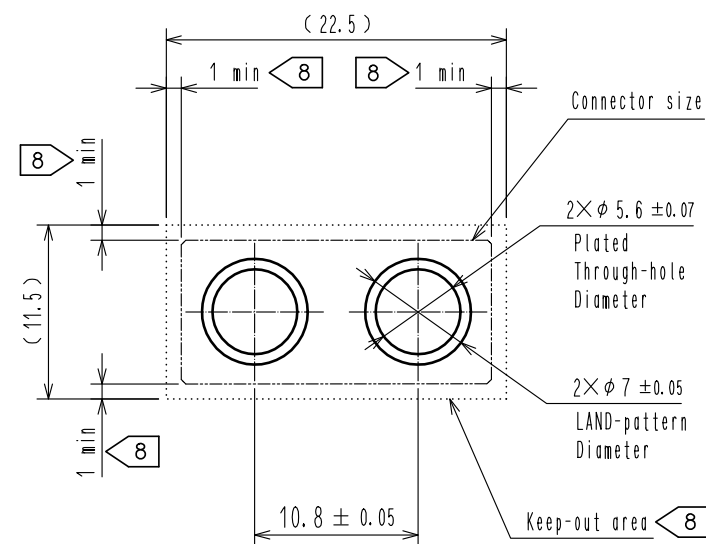


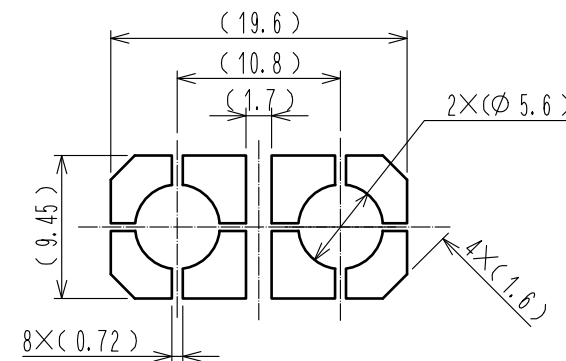
Jan.1.2026 Copyright 2026 HIROSE ELECTRIC CO., LTD. All Rights Reserved.
In case of consideration for using Automotive equipment / device which demand high reliability, kindly contact our sales window correspondents.



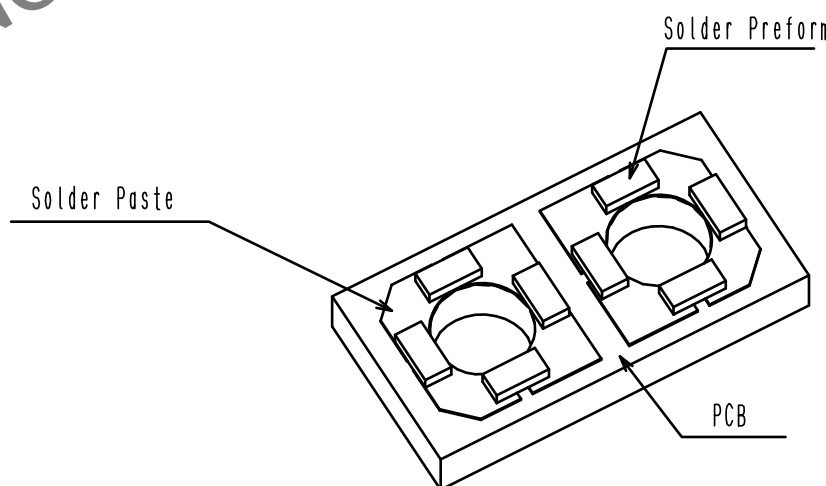
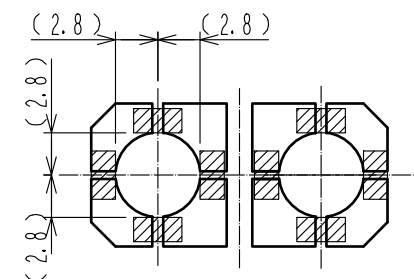
Recommended Footprint design (2:1)



11 Recommended Stencil design (2:1)
(Stencil thickness : 0.12mm)
Solder Paste



11 Recommended Solder Preform (2:1)
- Quantity : 4pcs/TH (8pcs/Conn)
- Individual Size : 3.2 x 1.6 x 0.8
- Position : See below



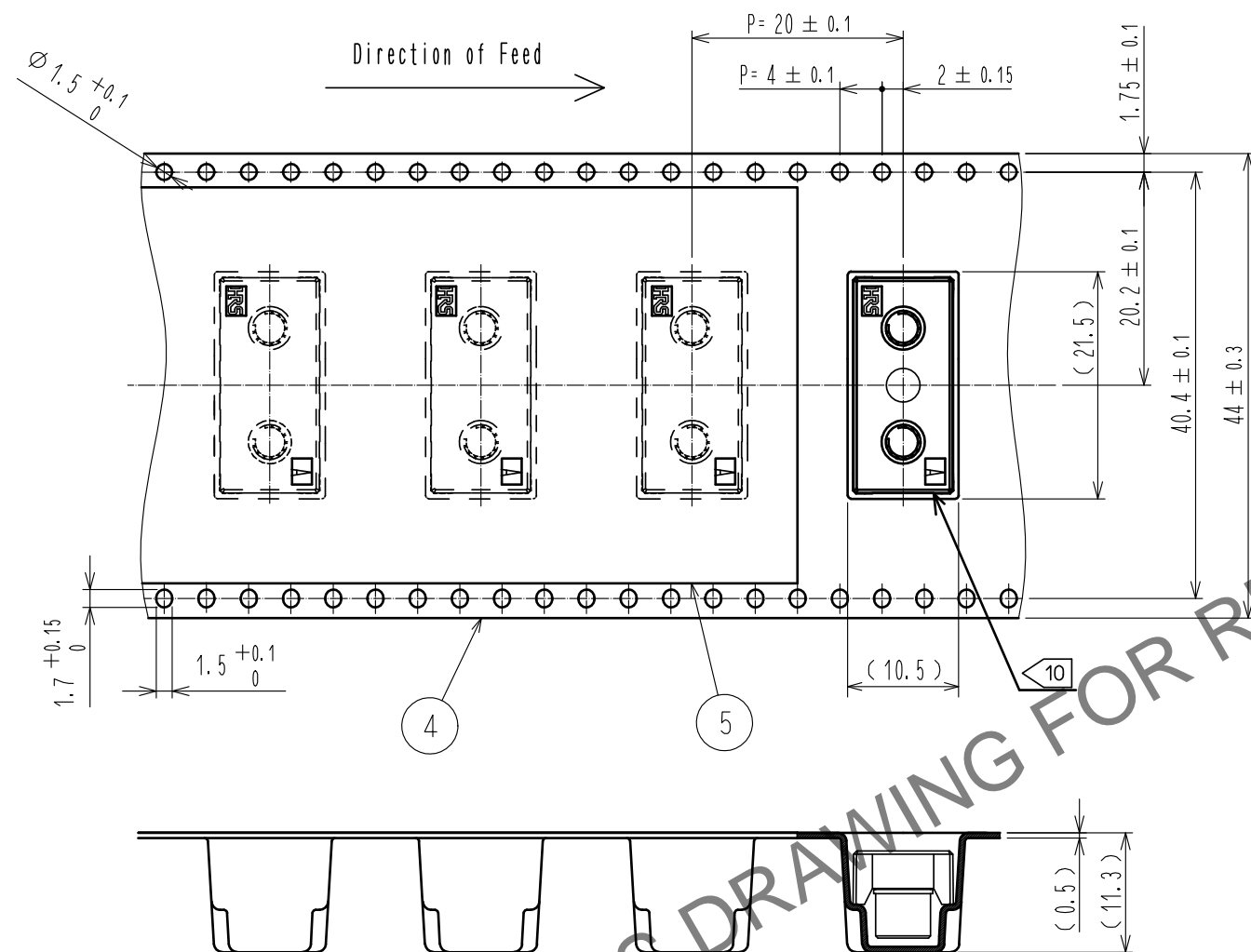
Notes:

- 1 The lot number is marked in this area. It may be marked on one or both areas.
- 2 Vacuum pickup area.
- 3 The dimensions in parentheses () are for reference.
- 4 Scratches and/or punch marks left by the manufacturing process will not affect the product performance. Dark spots might occasionally occur on the molded plastic.
- 5 Prolonged exposure to the atmosphere may cause the silver plating to tarnish.
- 6 This product is symmetric along the center axis. The mounting orientation is optional.
- 7 This product is RoHS compliant.
- 8 Please do not mount other devices in this area.
- 9 Packing for this product is embossed carrier tape packing. (250pcs per reel)
- 10 Connector direction in the pocket may vary.
- 11 This connector can be soldered as part of the normal SMT process. Please use the solder preform design outlined above. For more detail on this process, please refer to the design guide (EATD-F0804-00).

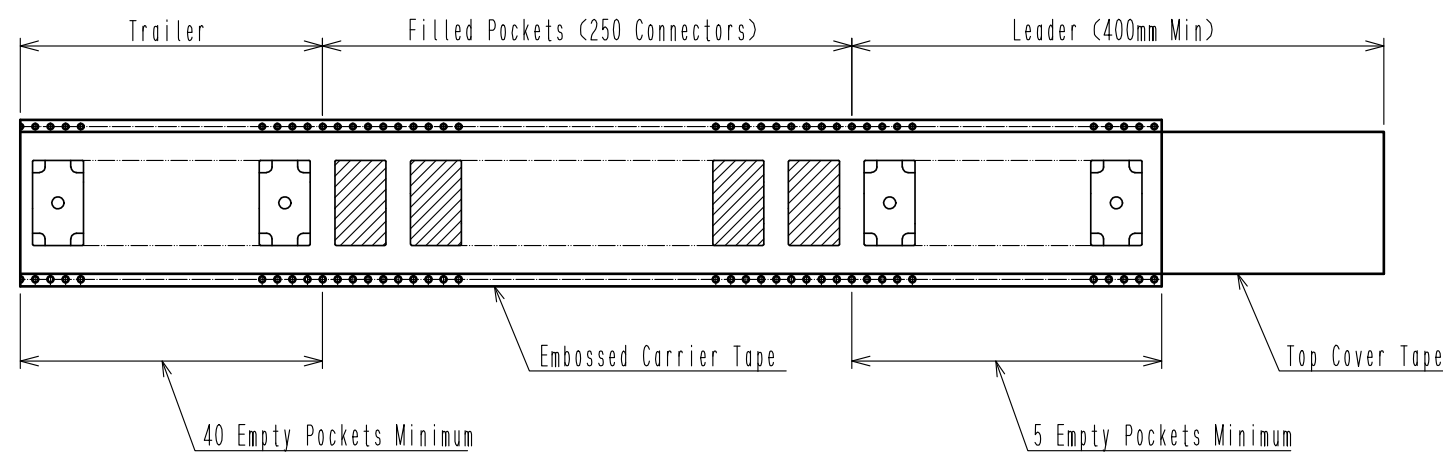
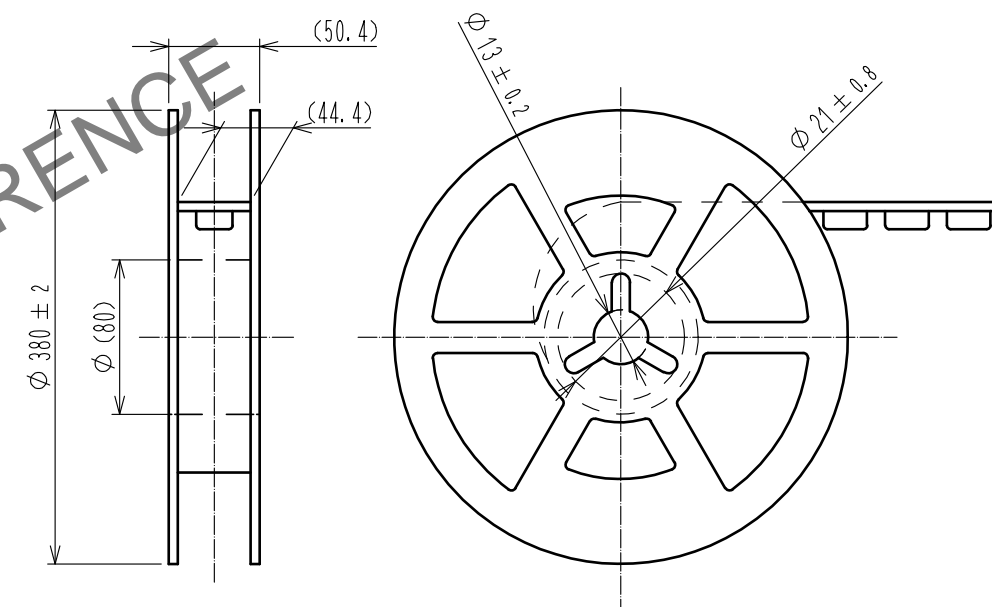
2		Brass	Over Plating : Silver 5.1μm min Under Plating : Nickel 3.5μm min	5	Polyester	(Top Cover Tape)
1		LCP	Black UL94V-0	4	Polystyrene	(Embossed Carrier Tape)
NO.		MATERIAL	FINISH , REMARKS	3	Copper Alloy	Contact Area : Gold 0.76μm min Under Plating : Nickel 1.3μm min
NO.		MATERIAL	FINISH , REMARKS	NO.	MATERIAL	FINISH , REMARKS
UNITS mm		SCALE 2 : 1	COUNT △	DESCRIPTION OF REVISIONS		
HRS		HIROSE ELECTRIC CO., LTD.	APPROVED : TM. MATSUO CHECKED : TS. OSHIDA DESIGNED : KM. KUBOTA DRAWN : KM. KUBOTA	20220216 20220215 20220215 20220215	DRAWING NO. PART NO. CODE NO.	
					EDC-363448-00-02 IT-PB-2S-DIRL CL0636-0631-0-00	
					1/2	

Jan.1.2026 Copyright 2026 HIROSE ELECTRIC CO., LTD. All Rights Reserved.
In case of consideration for using Automotive equipment / device which demand high reliability, kindly contact our sales window correspondents.

Drawing For Packing (Not to Scale)



Reel Dimensions (Not to Scale)



HRS

DRAWING NO.	EDC-363448-00-02
PART NO.	IT-PB-2S-DIRL
CODE NO.	CL0636-0631-0-00

2/2