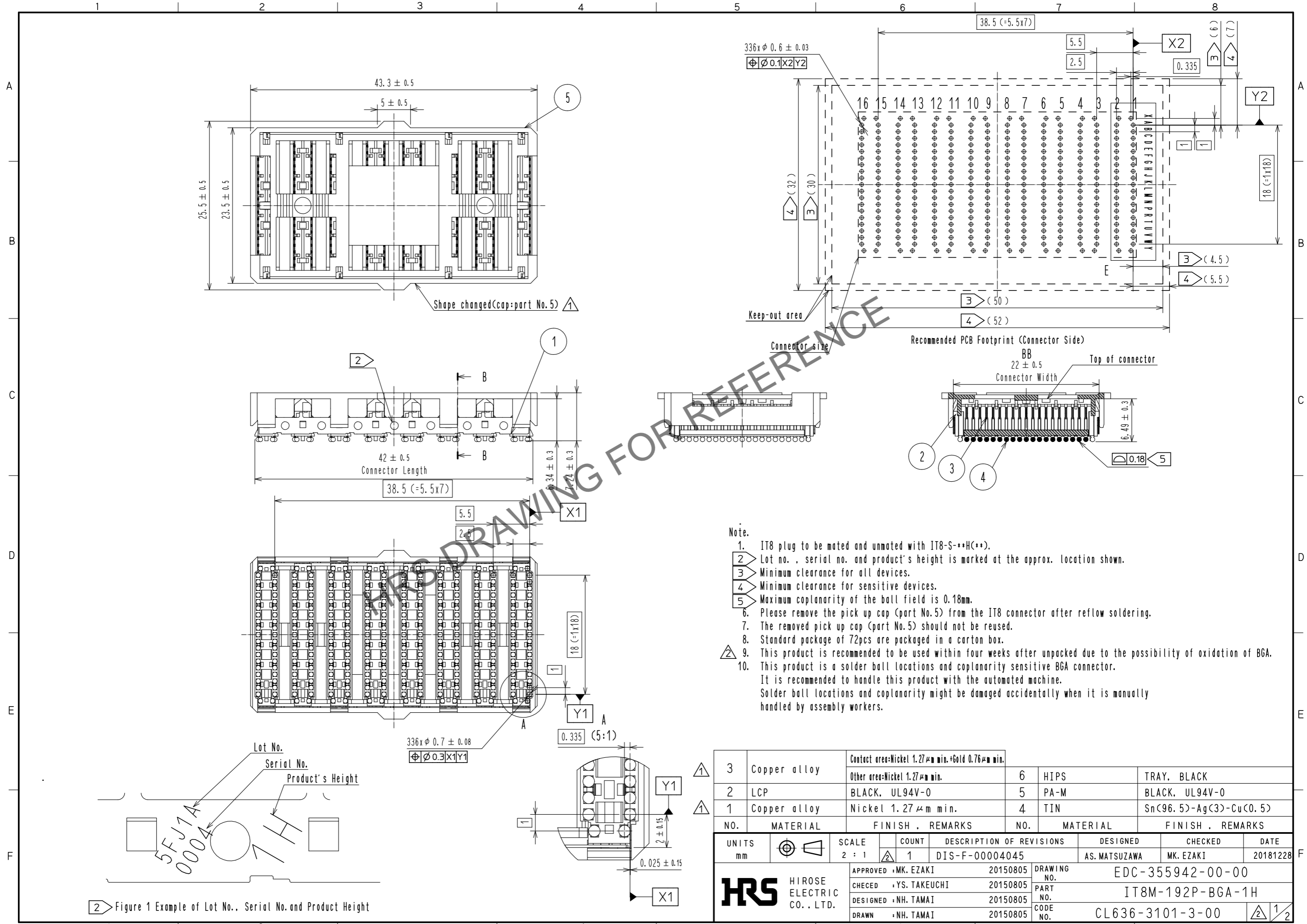


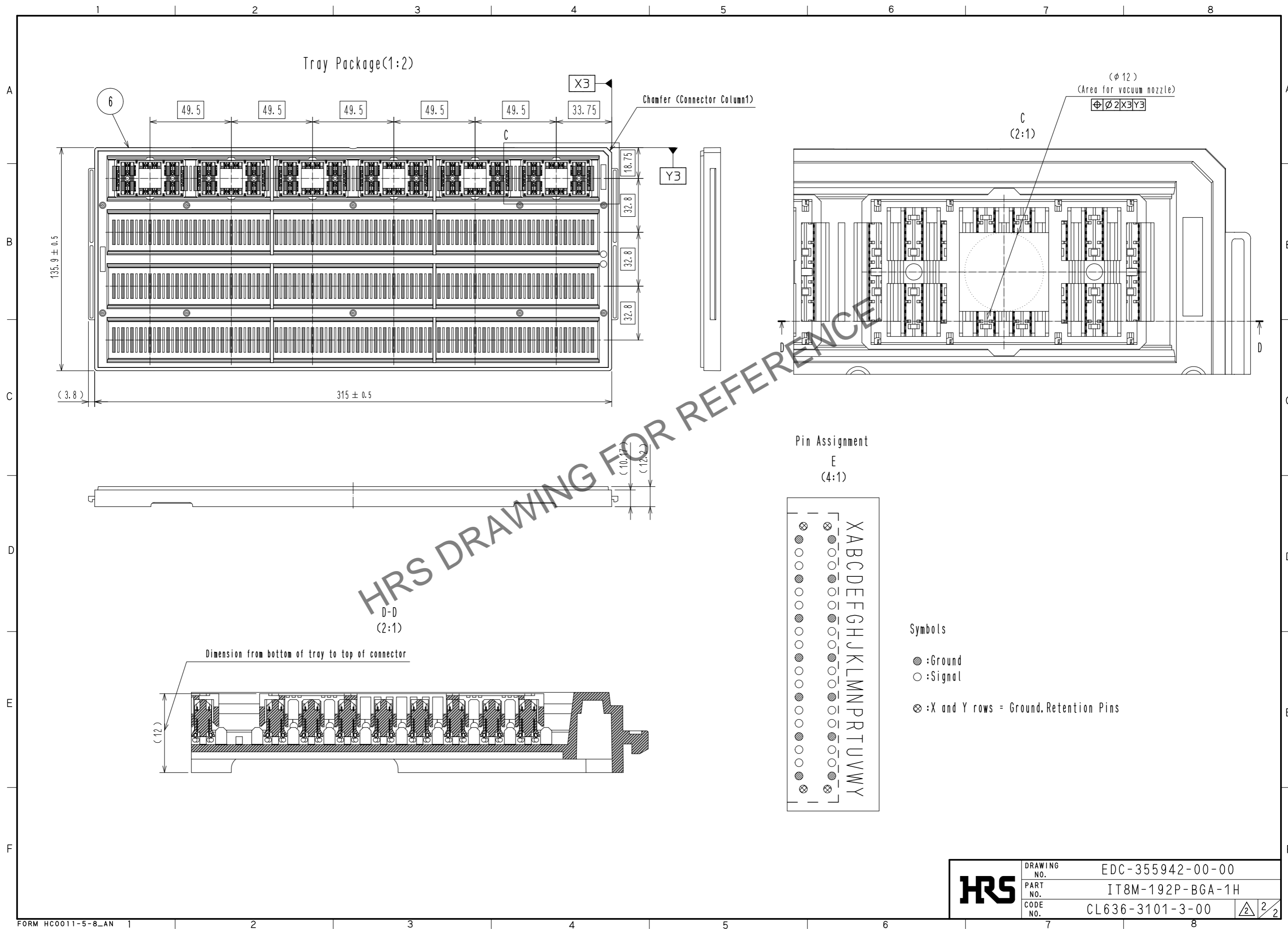
Jan.1.2026 Copyright 2026 HIROSE ELECTRIC CO., LTD. All Rights Reserved.  
 In case of consideration for using Automotive equipment / device which demand high reliability, kindly contact our sales window correspondents.



- Note.
- IT8 plug to be mated and unmated with IT8-S-\*\*H(\*\*).
  - Lot no. , serial no. and product's height is marked at the approx. location shown.
  - Minimum clearance for all devices.
  - Minimum clearance for sensitive devices.
  - Maximum coplanarity of the ball field is 0.18mm.
  - Please remove the pick up cap (part No.5) from the IT8 connector after reflow soldering.
  - The removed pick up cap (part No.5) should not be reused.
  - Standard package of 72pcs are packaged in a carton box.
  - This product is recommended to be used within four weeks after unpacked due to the possibility of oxidation of BGA.
  - This product is a solder ball locations and coplanarity sensitive BGA connector. It is recommended to handle this product with the automated machine. Solder ball locations and coplanarity might be damaged accidentally when it is manually handled by assembly workers.

3	Copper alloy	Contact area:Nickel 1.27µm min.+Gold 0.76µm min.	6	HIPS	TRAY, BLACK
2	LCP	Other area:Nickel 1.27µm min.	5	PA-M	BLACK, UL94V-0
1	Copper alloy	Nickel 1.27µm min.	4	TIN	Sn(96.5)-Ag(3)-Cu(0.5)
NO.	MATERIAL	FINISH . REMARKS	NO.	MATERIAL	FINISH . REMARKS
UNITS	mm	SCALE	2 : 1	COUNT	1
		DESCRIPTION OF REVISIONS	DESIGNED	CHECKED	DATE
		DIS-F-00004045	AS. MATSUZAWA	MK. EZAKI	20181228
APPROVED :MK. EZAKI		20150805	DRAWING NO. EDC-355942-00-00		
CHECKED :YS. TAKEUCHI		20150805	PART NO. IT8M-192P-BGA-1H		
DESIGNED :NH. TAMAI		20150805	CODE NO. CL636-3101-3-00		
DRAWN :NH. TAMAI		20150805	1/2		

Jan.1.2026 Copyright 2026 HIROSE ELECTRIC CO., LTD. All Rights Reserved.  
 In case of consideration for using Automotive equipment / device which demand high reliability, kindly contact our sales window correspondents.



<b>HRS</b>	DRAWING NO.	EDC-355942-00-00
	PART NO.	IT8M-192P-BGA-1H
	CODE NO.	CL636-3101-3-00
		2/2