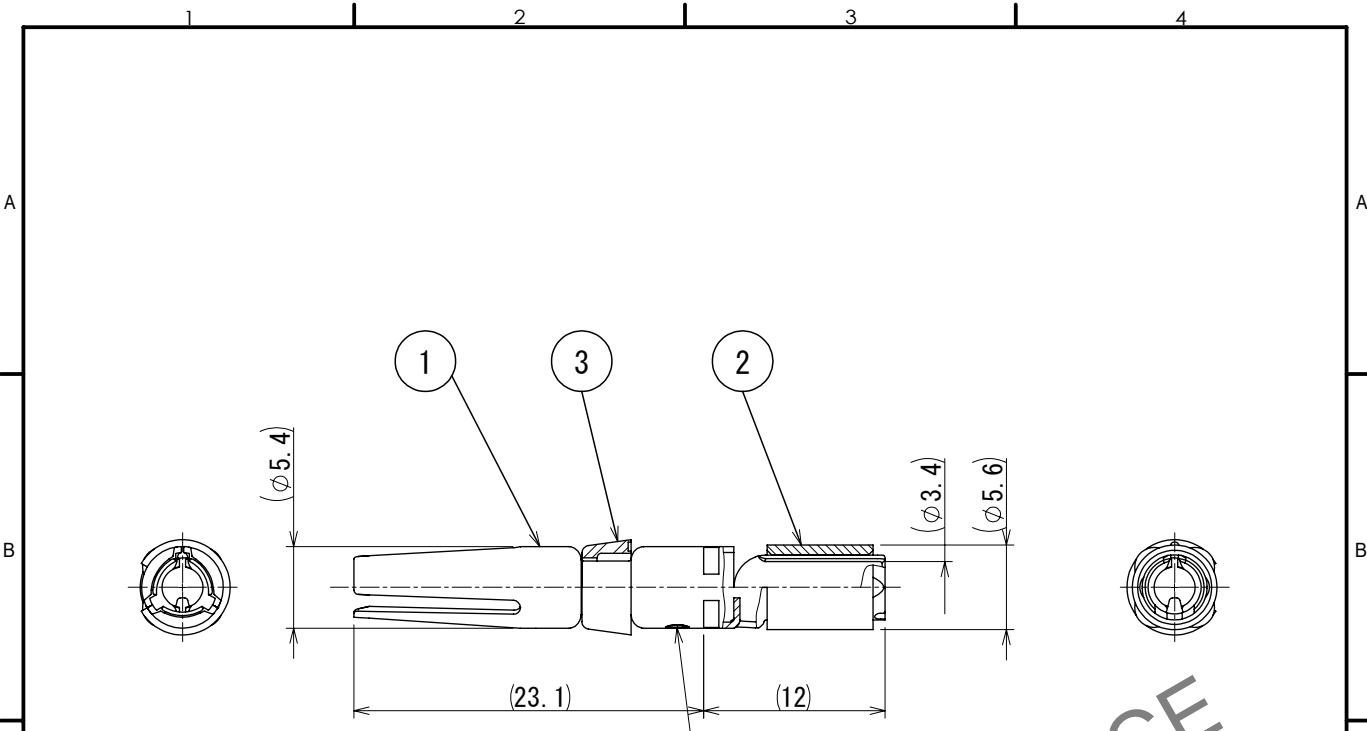


Feb.1.2026 Copyright 2026 HIROSE ELECTRIC CO., LTD. All Rights Reserved.
 In case of consideration for using Automotive equipment / device which demand high reliability, kindly contact our sales window correspondents.



Making position of applicable wire size '10'

HRS DRAWING FOR REFERENCE

- Notes
- 1 Applicable crimping tool: JIS C 9711
 (Compression tools for wire connectors of interior wiring)
 Applicable die size : 5.5
 - 2 Applicable extraction tool : HR41-TP
 - 3 One bag includes 3pcs of products.
 - 4 Plating (Ref. No. ①)
 Contact plating : Gold 0.2 μm min.
 Terminal area : Tin 1 μm min.
 Others : Nickel 2 μm min.

△ CAD change

2	Copper	Tin plating					
1	Copper alloy	4	3	Polybutylene terephthalate	(White) UL94V-0		
NO.	MATERIAL	FINISH	REMARKS	NO.	MATERIAL	FINISH	REMARKS

UNITS mm		SCALE 2:1	COUNT	DESCRIPTION OF REVISIONS	DESIGNED	CHECKED	DATE
			1	DIS-C-00018381	TY. SUZUKI	KS. TAKAHASHI	2024. 09. 24

HIROSE ELECTRIC CO., LTD.	APPROVED : SU. OBARA	2013. 01. 18	DRAWING NO.	EDC-117433-00-00
	CHECKED : HY. KOBAYASHI	2013. 01. 18	PART NO.	HR41-SC-111
	DESIGNED : TY. SUZUKI	2013. 01. 18	CODE NO.	CL0141-0001-7-00
	DRAWN : KN. IKEHARA	2013. 01. 15		