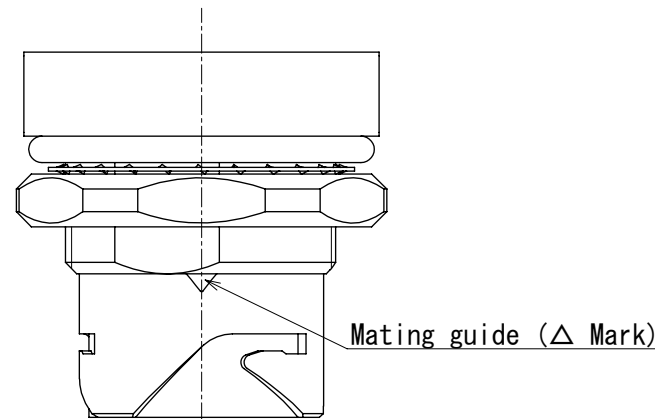
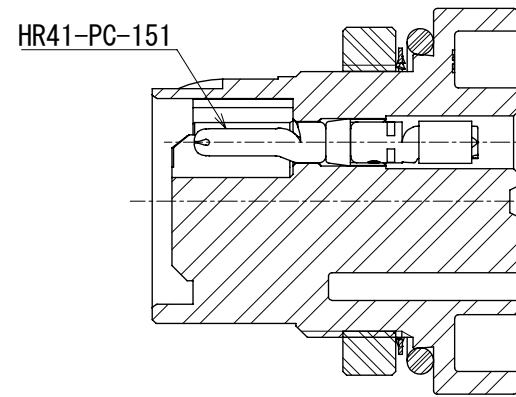
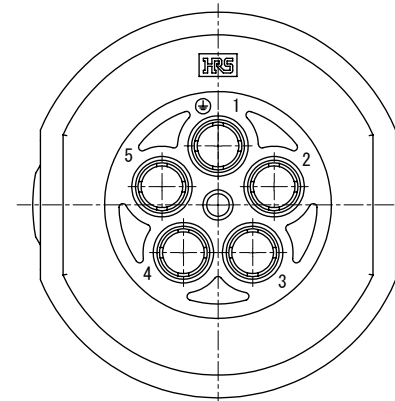
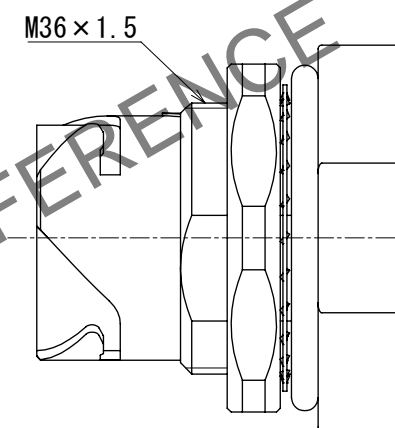
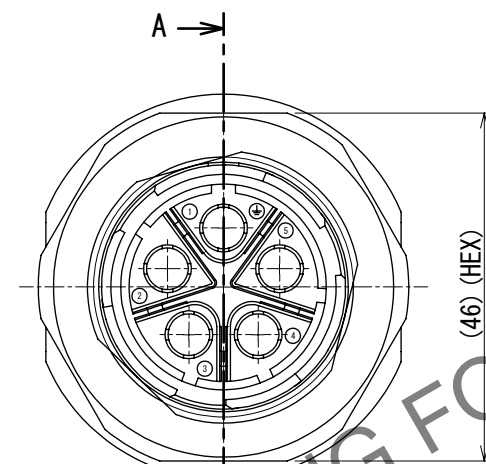
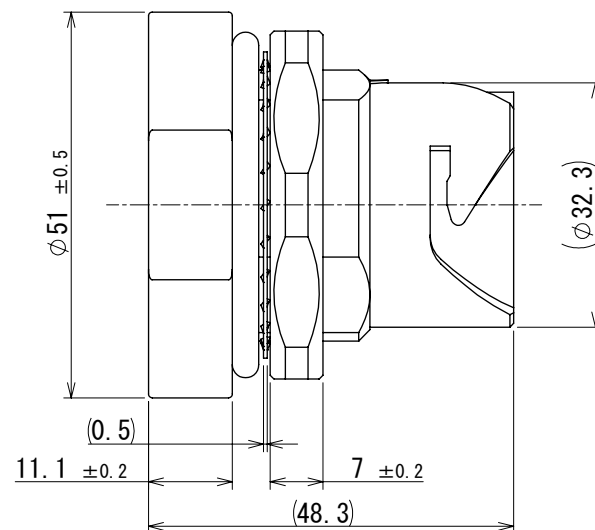
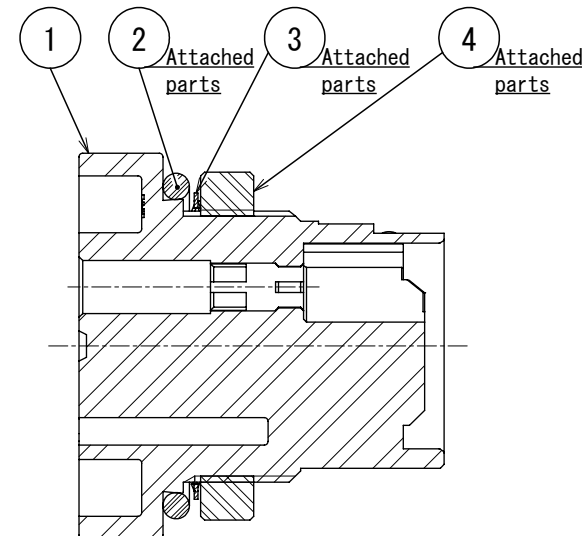


Jan.1.2026 Copyright 2026 HIROSE ELECTRIC CO., LTD. All Rights Reserved.
In case of consideration for using Automotive equipment / device which demand high reliability, kindly contact our sales window correspondents.

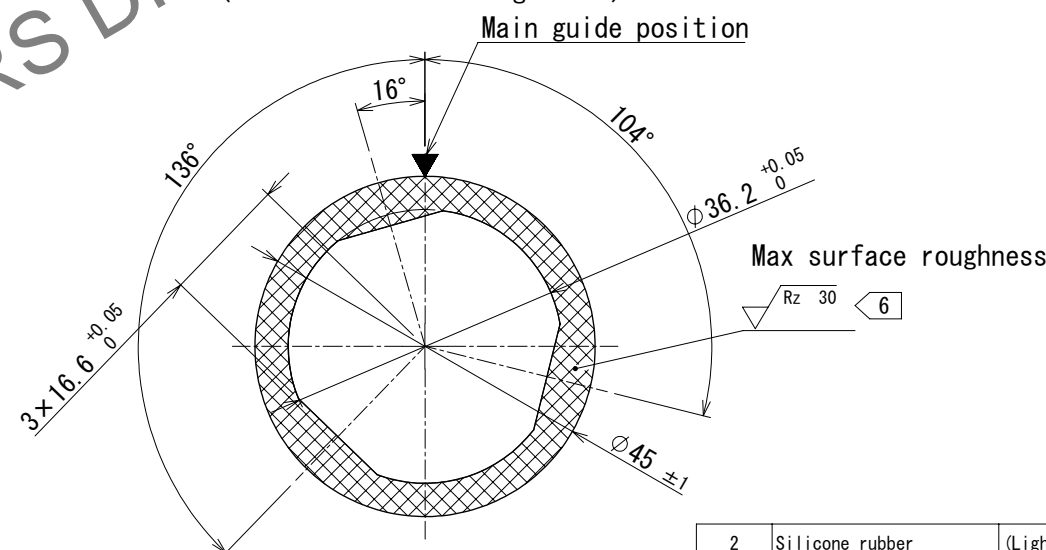
1 Fig.1 The state applicable contact assembled



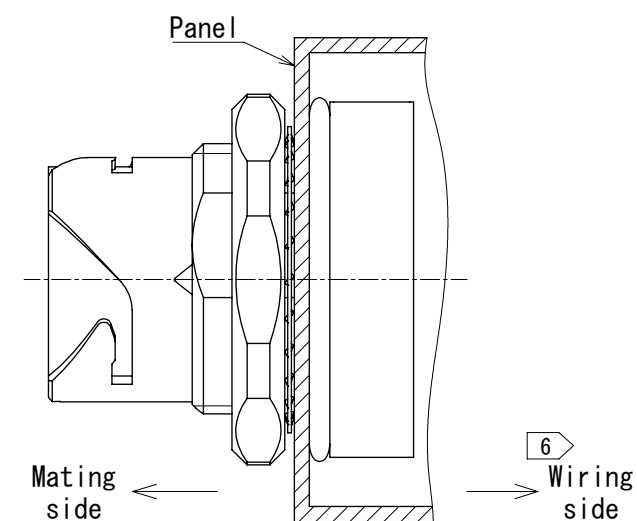
A-A



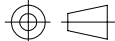
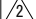

4 Fig.2 The recommendd panel dimention. (t=5.5(MAX))
(As viewed from mating side.)



4 Fig.3 The state applicable connector set up.



- Notes
- Fig.1 shows the state applicable contact assembled applicable crimping contact:HR41-PC-151
 - Applicable crimp contact extraction tool:HR41-TP
 - The recommended tightening torque of Ref. No. ④ to be 5 to 5.5 N・m.
 - Fig.2 shows the recommendd panel dimention. Fig.3 shows the state applicable connector set up. When connector set up, it in order of Ref.②, panel, Ref.③, Ref.④. Please check Ref No.② is properly set at the groove of Ref.No.①. While mounting the connector,make sure that Ref No.② is not caught.
 - The assembly of this product applies to the manual ETAD-C0288
 - The surface roughness of the cross-hatched part should be applied to the wiring side.

2	Silicone rubber	(Light red)		4	Polyamide	(Black) UL94V-0			
1	Polyamide	(Black) UL94V-0		3	Stainless steel				
NO.	MATERIAL	FINISH , REMARKS		NO.	MATERIAL	FINISH , REMARKS			
UNITS mm		SCALE	COUNT	DESCRIPTION OF REVISIONS		DESIGNED	CHECKED	DATE	
		1:1		1	DIS-C-00019058		TY. SUZUKI	KN. IKEHARA	2025. 01. 24
		APPROVED : SU. OBARA		2012. 06. 20	DRAWING NO. EDC-117699-00-00				
		CHECKED : HY. KOBAYASHI		2012. 06. 20	PART NO. HR41-25WBRA-5PC				
		DESIGNED : TY. SUZUKI		2012. 06. 20	CODE NO. CL0141-0010-8-00				
 HIROSE ELECTRIC CO., LTD.		DRAWN : TY. SUZUKI		2012. 06. 20				