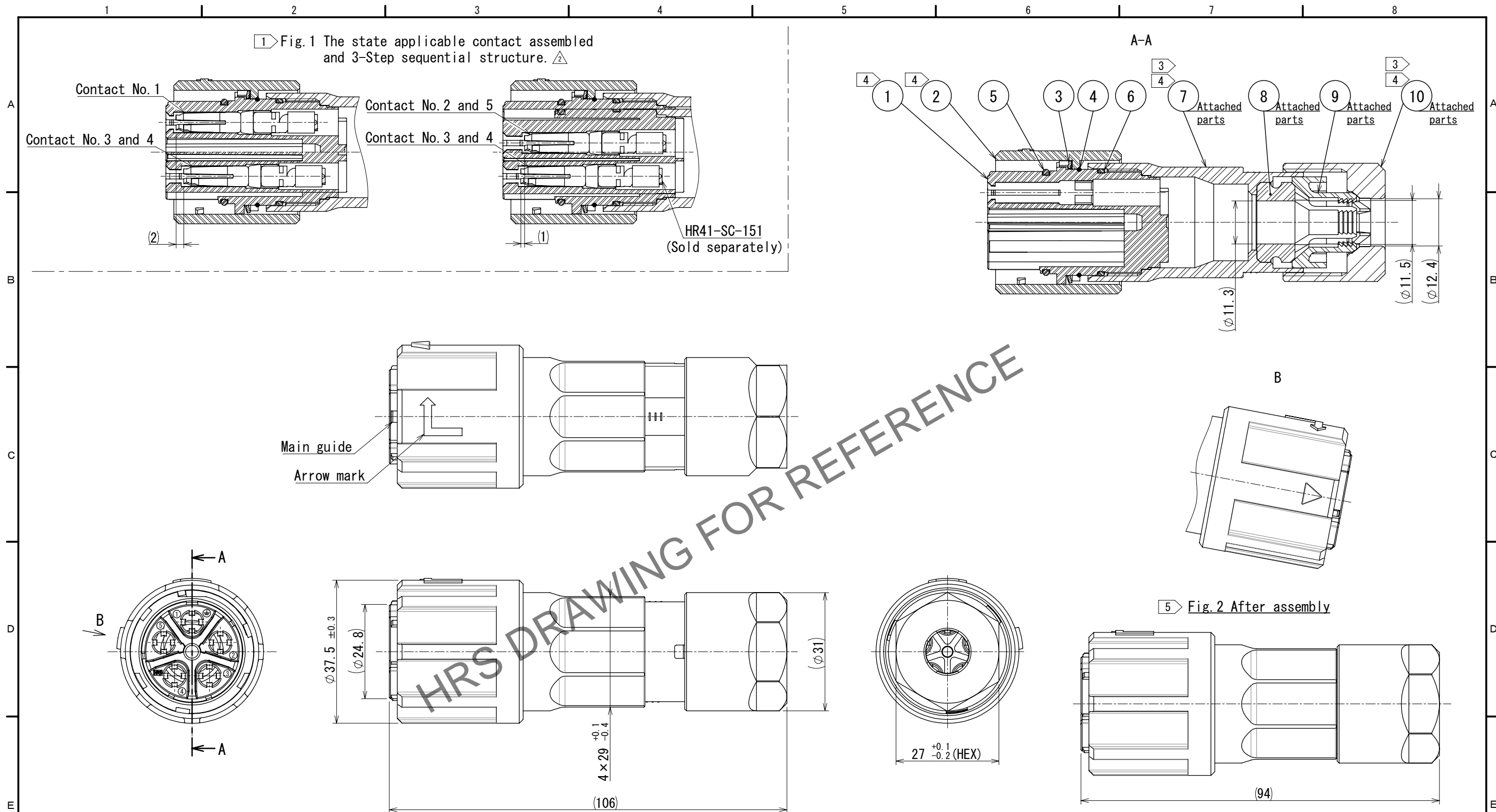


Jan.1.2026 Copyright 2026 HIROSE ELECTRIC CO., LTD. All Rights Reserved.
In case of consideration for using Automotive equipment / device which demand high reliability, kindly contact our sales window correspondents.



- Notes
- Fig.1 shows the state applicable contact assembled and 3-Step sequential structure.
Applicable crimping contact:HR41-SC-151
 - Applicable crimp contact extraction tool:HR41-TP
 - The recommended tightening torque of Ref. No. ⑦ and ⑩ to be 5 to 5.5 N・m
The adhesive for prevention of looseness is not necessary in the first time.
 Loctite 263, Locprimer 7649, Henkel Japan apply to prevent Ref No. ⑦, ⑩ from loosening after the second time.
 - Rotation examples are shown for Ref No. ①, ②, ⑦ and ⑩.
 - Fig.2 shows the appearance after assembly.
 - The cable pull force, twisting strength, water tightness and other characteristics may differ, depending on cable structure. Please confirm before the use.
 - The assembly of this product applies to the manual ETAD-C0288.

5	Silicone rubber	(Light red)	10	Polyamide	(Black) UL94V-0					
4	Stainless steel		9	Polyamide	(NC, White) UL94V-0					
3	Stainless steel		8	Silicone rubber	(Black)					
2	Polyamide	(Black) UL94V-0	7	Polyamide	(Black) UL94V-0					
1	Polybutylene terephthlate	(Black) UL94V-0	6	Silicone rubber	(Red)					
NO.	MATERIAL	FINISH , REMARKS		NO.	MATERIAL	FINISH , REMARKS				
UNITS mm				SCALE 1:1	COUNT <div>2</div> 3	DESCRIPTION OF REVISIONS DIS-C-00019052		DESIGNED TY. SUZUKI	CHECKED KN. IKEHARA	DATE 2025. 01. 22
<div>HR5</div> <div>HIROSE ELECTRIC CO., LTD.</div>				APPROVED : SU. OBARA		2012. 06. 20	DRAWING NO.	EDC-117698-00-00		
				CHECKED : HY. KOBAYASHI		2012. 06. 20	PART NO.	HR41-25WBP-5SC		
				DESIGNED : TY. SUZUKI		2012. 06. 20	CODE NO.	CL0141-0009-9-00		
				DRAWN : TY. SUZUKI		2012. 06. 20				
										<div>2</div> <div>1</div>