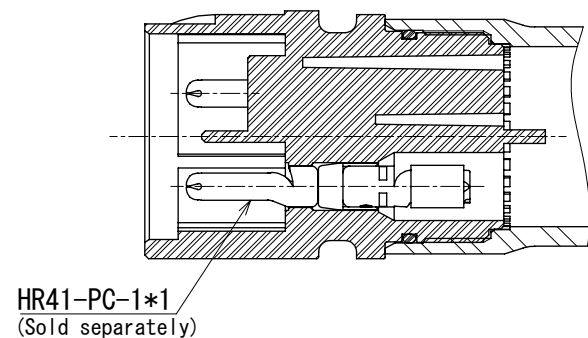
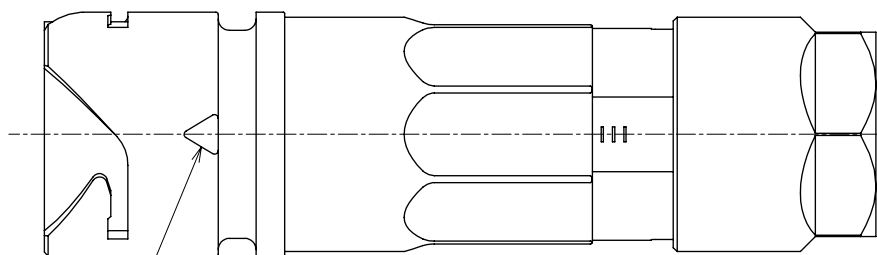


Feb.1.2026 Copyright 2026 HIROSE ELECTRIC CO., LTD. All Rights Reserved.
In case of consideration for using Automotive equipment / device which demand high reliability, kindly contact our sales window correspondents.

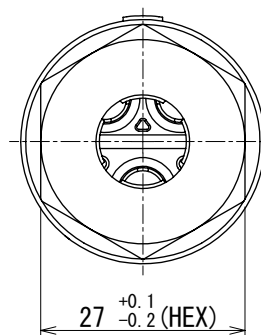
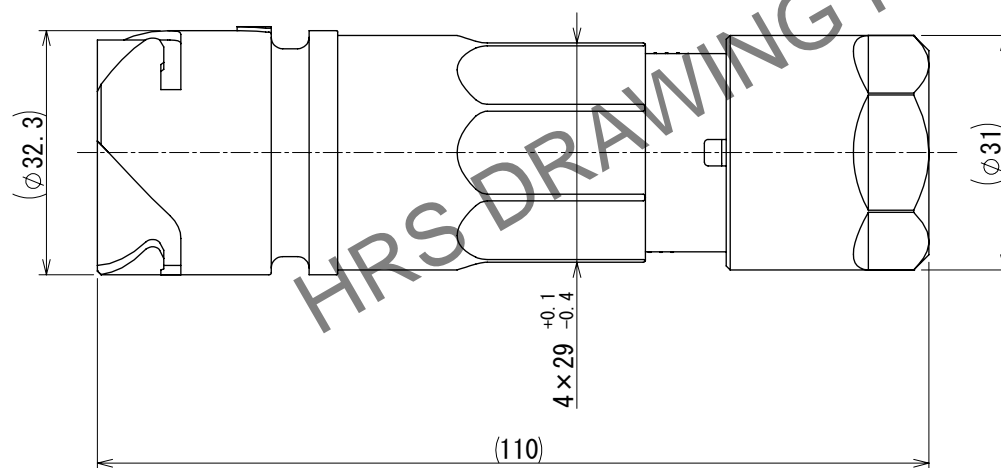
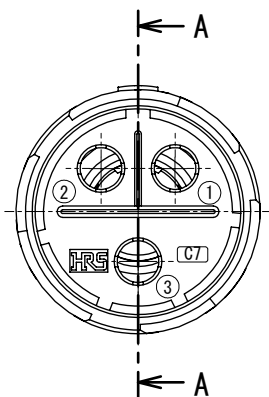
1 Fig.1 The state incorporate applicable crimp contact.



HR41-PC-1*1
(Sold separately)

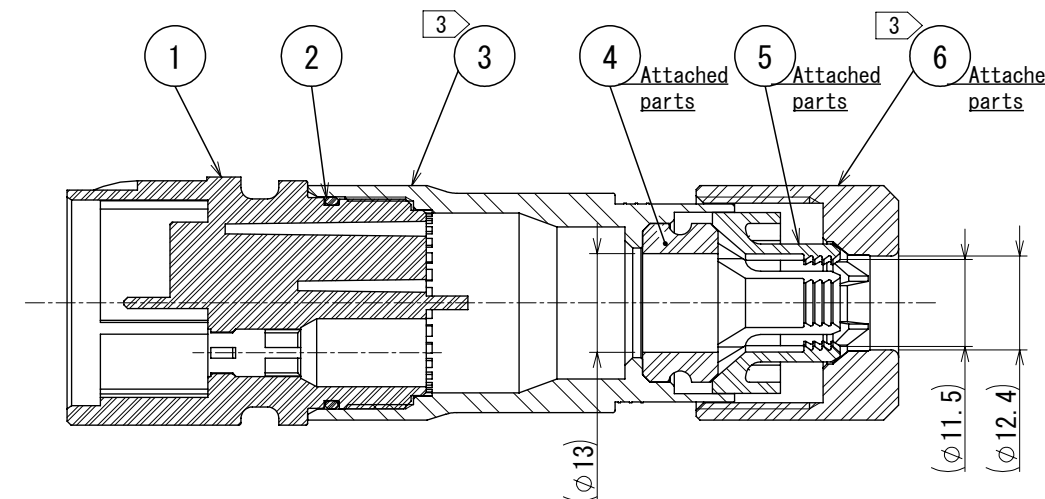


Main guide position marking

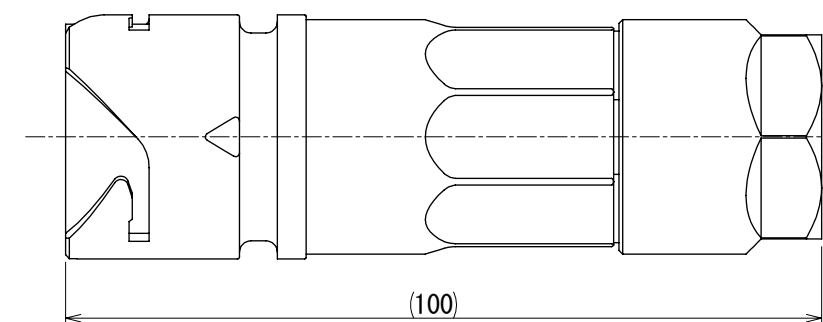


27 +0.1 -0.2 (HEX)

A-A



5 Fig.2 The appearance after assembly.



Notes 1 Fig.1 shows the state incorporate applicable crimp contact.

Applicable crimp contact :HR41-PC-1*1(Sold separately)

2 Applicable crimp contact extraction tool:HR41-TP

3 The recommended tightening torque of Ref. No. ③ and ⑥ to be 5 to 5.5 N・m
The adhesive tor prevention of looseness is not necessary in the first time.
Loctite 263, Locprimer 7649, Henkel Japan apply to prevent Ref. No. ①,③ from loosening.
After the second time.

4 Rotation examples are shown for Ref. No.③ and ⑥.

5 Fig.2 shows the appearance after assembly.

6 The cable pull and twisting strength and other characteristics may differ, depending on the cable structure, please confirm before the use.

7 The assembly of this product applies to the manual ETAD-C0298.

△(※Due to data anomalies, drawings were not generated as per CAD data.)

3	Polyamide	(Black) UL94V-0	6	Polyamide	(Black) UL94V-0
2	Silicone rubber	(Red)	5	Polyamide	(White) UL94V-0
1	Polyamide	(Black) UL94V-0	4	Silicone rubber	(Red)
NO.	MATERIAL	FINISH , REMARKS	NO.	MATERIAL	FINISH , REMARKS
UNITS mm		SCALE 1:1	COUNT 1	DESCRIPTION OF REVISIONS DIS-C-00019243	DESIGNED TY. SUZUKI
		APPROVED : SU. OBARA	2013. 03. 14	DRAWING NO. EDC-117998-00-00	DATE 2025. 02. 10
		CHECKED : HY. KOBAYASHI	2013. 03. 14	PART NO. HR41-25WBJB-3PC	
		DESIGNED : TY. SUZUKI	2013. 03. 14	CODE NO. CL0141-0017-7-00	
		DRAWN : KN. IKEHARA	2013. 03. 14		