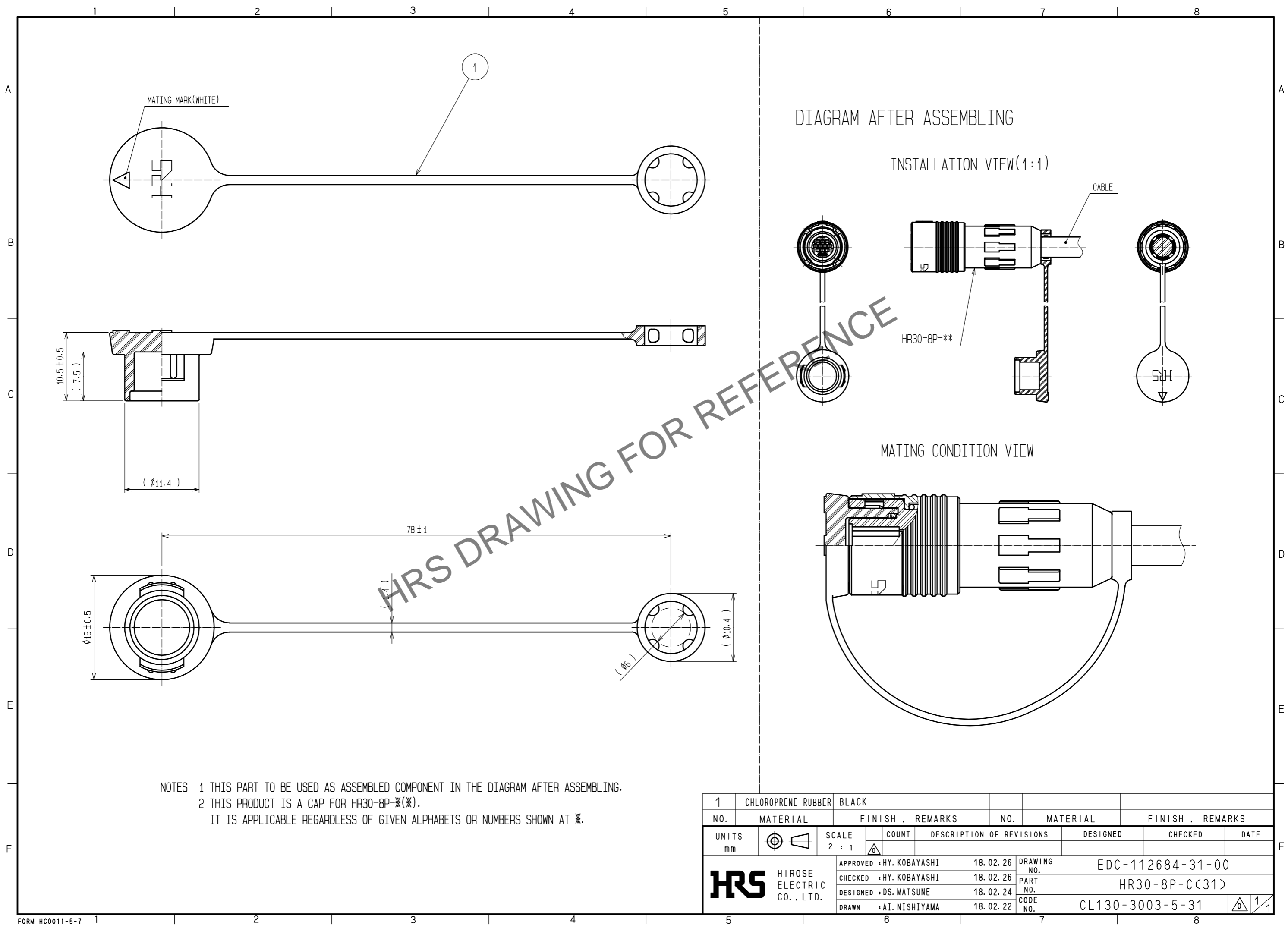


Feb.1.2026 Copyright 2026 HIROSE ELECTRIC CO., LTD. All Rights Reserved.
In case of consideration for using Automotive equipment / device which demand high reliability, kindly contact our sales window correspondents.



NOTES 1 THIS PART TO BE USED AS ASSEMBLED COMPONENT IN THE DIAGRAM AFTER ASSEMBLING.
2 THIS PRODUCT IS A CAP FOR HR30-8P-*(※).
IT IS APPLICABLE REGARDLESS OF GIVEN ALPHABETS OR NUMBERS SHOWN AT ※.

1	CHLOROPRENE RUBBER	BLACK						
NO.	MATERIAL	FINISH . REMARKS	NO.	MATERIAL	FINISH . REMARKS			
UNITS mm		SCALE 2 : 1	COUNT 	DESCRIPTION OF REVISIONS	DESIGNED	CHECKED	DATE	
HIROSE ELECTRIC CO., LTD.		APPROVED	HY. KOBAYASHI	18.02.26	DRAWING NO.	EDC-112684-31-00		
		CHECKED	HY. KOBAYASHI	18.02.26	PART NO.	HR30-8P-C(31)		
		DESIGNED	DS. MATSUNE	18.02.24	CODE NO.	CL130-3003-5-31		
		DRAWN	AI. NISHIYAMA	18.02.22				1/1