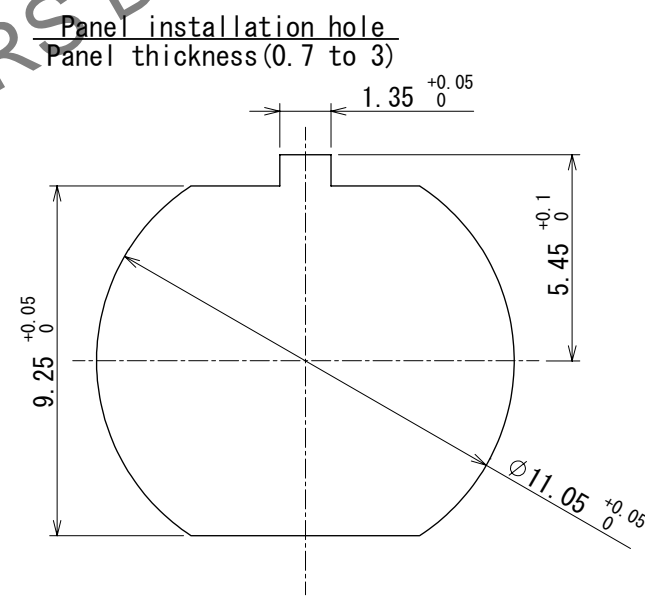
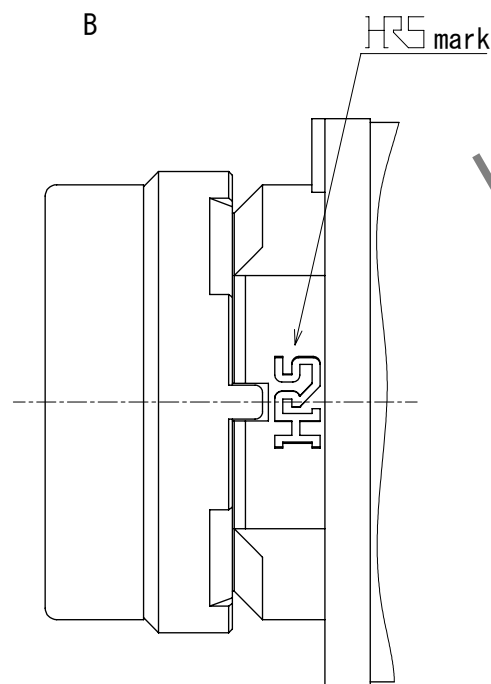
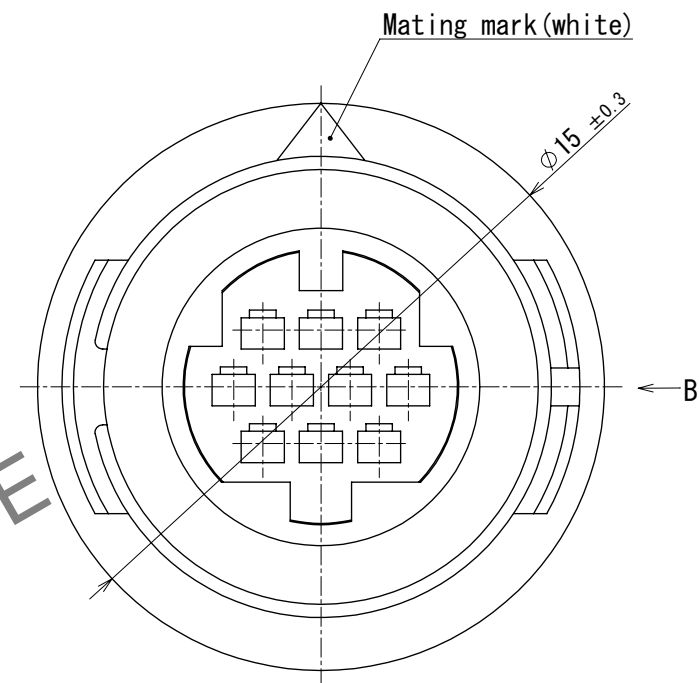
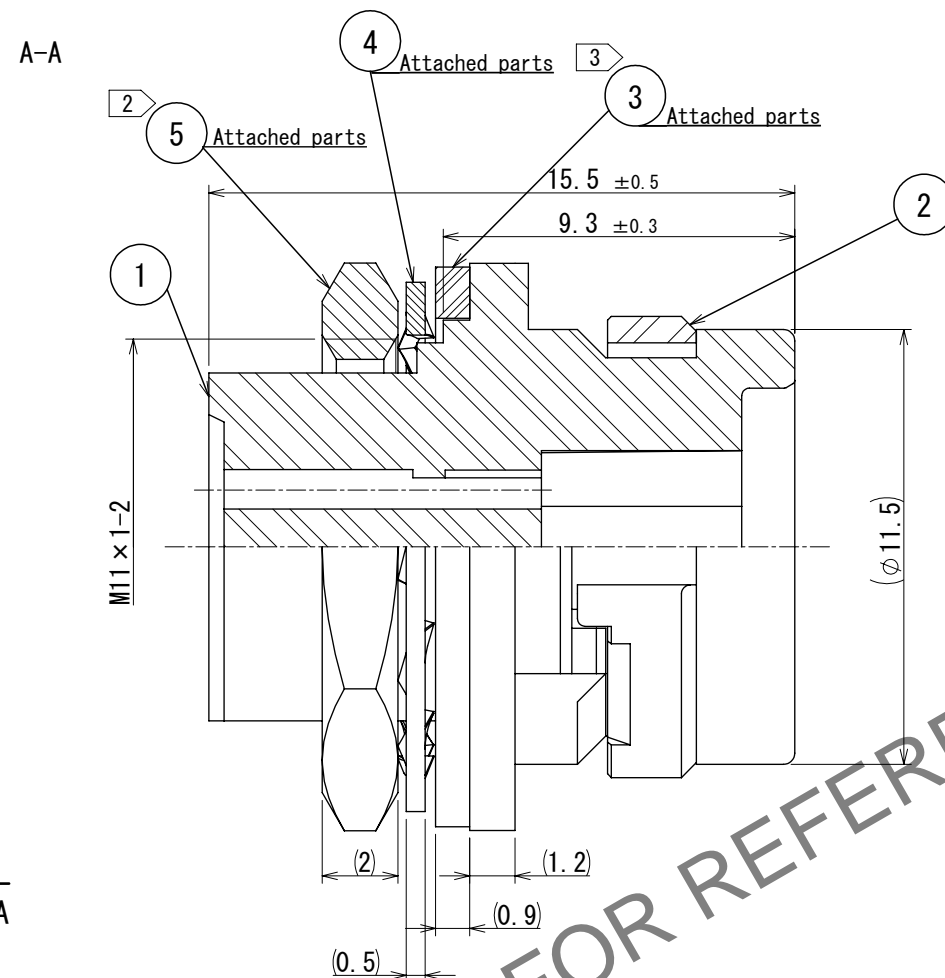
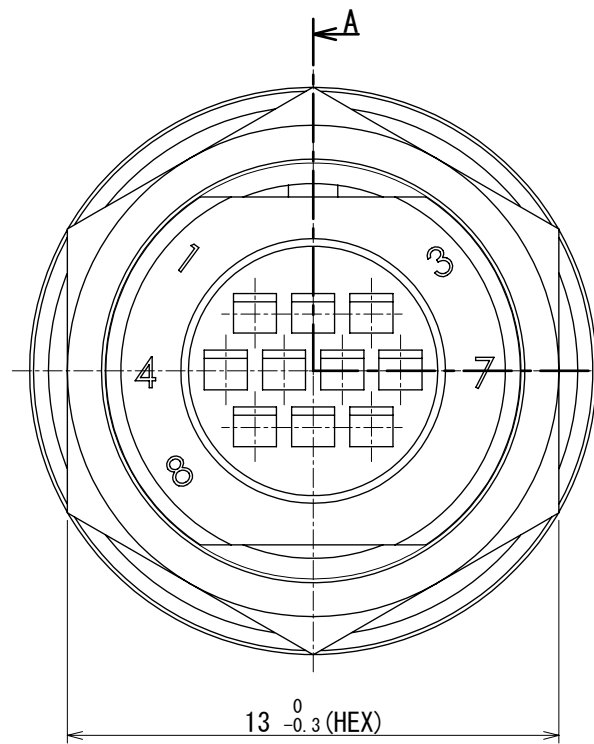
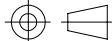


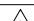
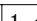


Oct.1.2025 Copyright 2025 HIROSE ELECTRIC CO., LTD. All Rights Reserved.
In case of consideration for using Automotive equipment / device which demand high reliability, kindly contact our sales window correspondents.



- Notes 1 Applicable crimping contact:HR30-PC-211
(Applicable wire: 26 to 30 AWG wire jacket diameter: $\phi 1$ max)
Applicable crimp contact extraction tool:HR30-TP
2 The recommended clump torque of Ref. No. 5 to be 0.8N·m.
3 LOCTITE 263, LOCPRIMER 7649, ROCTITE JAPAN apply to prevent Ref. No. 5 from loosening.
4 When this connector is mounted on to panel, be careful Ref. No. 3 is assembled surely Ref. No. 1 as shown in this figure to keep waterproof effectiveness.
5 The assembly of this product applies to the manual ETAD-C0302-00.

△ CAD change

3	Chloroprene rubber	(Black)					
2	Polyphenylene sulfide	(Black) UL94V-0	5	Brass	Nickel plating		
1	Polyphenylene sulfide	(Black) UL94V-0	4	Phosphor bronze	Nickel plating		
NO.	MATERIAL	FINISH , REMARKS		NO.	MATERIAL	FINISH , REMARKS	
<div>UNITS mm</div> <div></div> <div> HIROSE ELECTRIC CO. , LTD.</div>	SCALE 5:1	<div></div> COUNT 2	DESCRIPTION OF REVISIONS DIS-C-00019241		DESIGNED KS. TAKAHASHI	CHECKED TP. KOMATSU	DATE 2025. 02. 12
	APPROVED : HY. KOBAYASHI	2018. 02. 26	DRAWING NO. EDC-112154-31-00				
	CHECKED : HY. KOBAYASHI	2018. 02. 26	PART NO. HR30-7R-10PC (31)				
	DESIGNED : DS. MATSUNE	2018. 02. 26	CODE NO. CL0130-1012-5-31				
	DRAWN : DS. MATSUNE	2018. 02. 26					
		<div></div>	<div></div>				