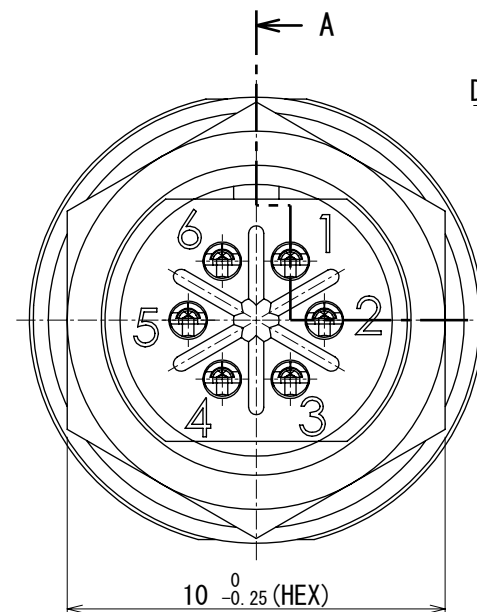
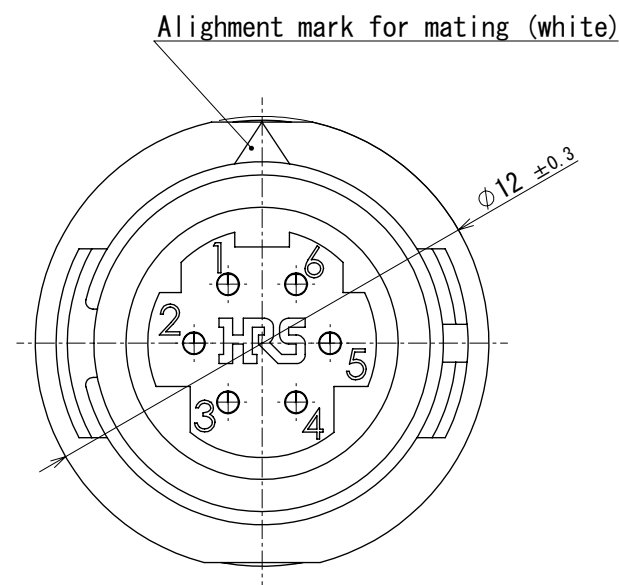
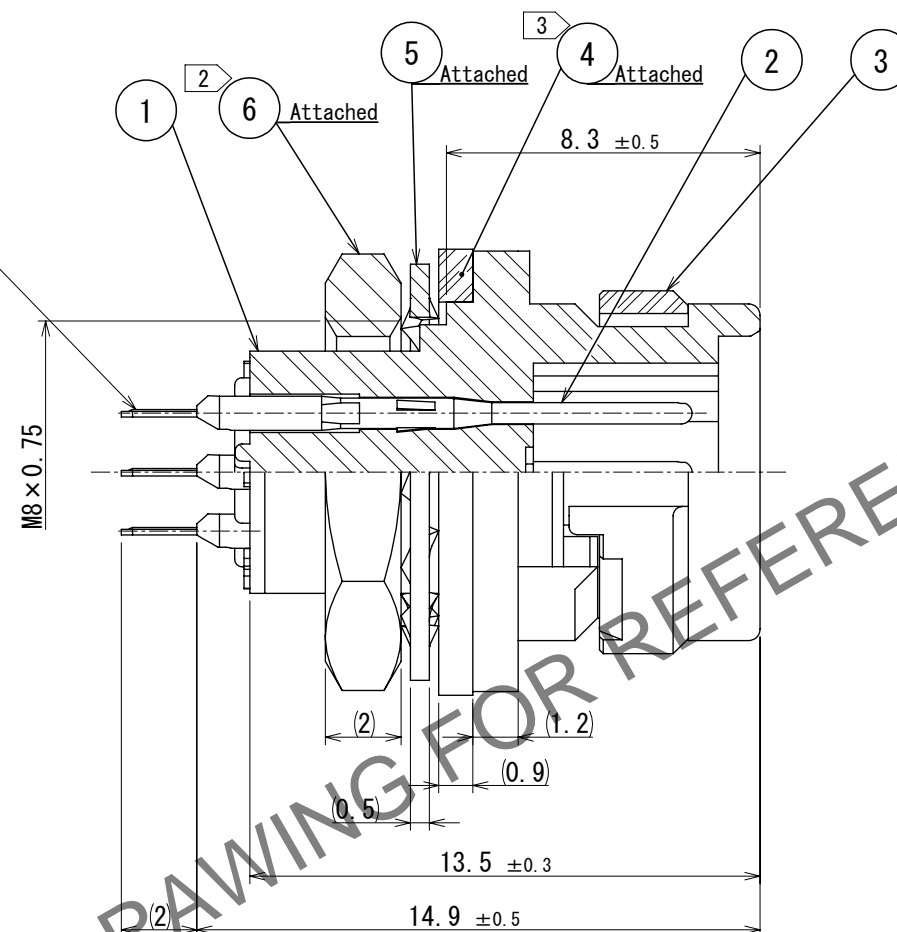


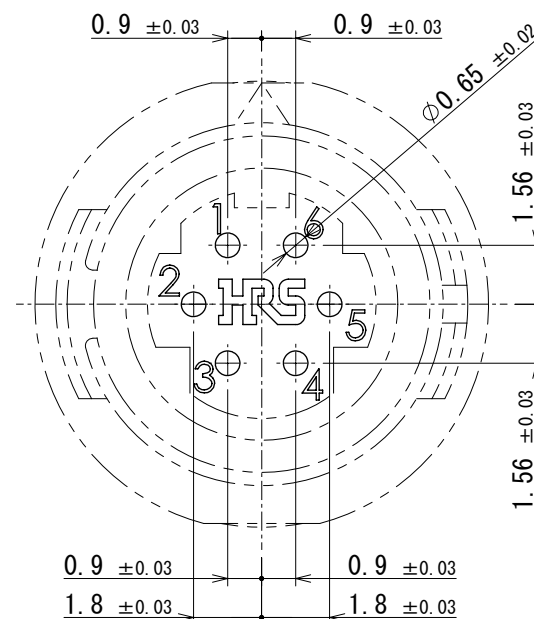
Dec.1.2025 Copyright 2025 HIROSE ELECTRIC CO., LTD. All Rights Reserved.
In case of consideration for using Automotive equipment / device which demand high reliability, kindly contact our sales window correspondents.



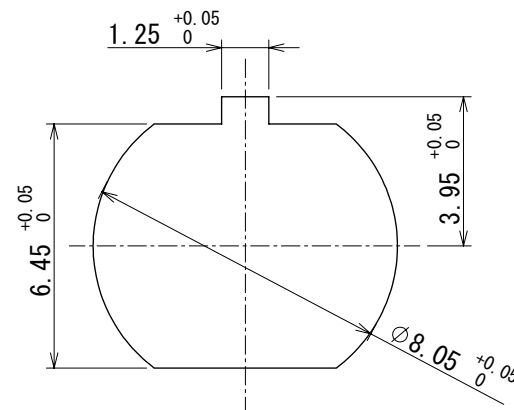
Dip post (0.2 × 0.5)



Dip post location dimensions in the view
from connector opening side
(Recommended maximum panel thickness : 1.2)



Panel installation hole
Panel thickness (0.7~2)



- Notes ① Finish of Ref. No. ②
Contact area : gold 0.2 μm min.
Dip area : gold flash.
Under plating: nickel 2 μm min.
- ② Recommended tightening torque of Ref. No. ⑥ : 0.5 N · m.
Loosened nut may cause the deterioration of water-resistancy.
The use of loosening-preventive adhesive is strongly recommended.
Recommended thread locker : LOCTITE 263 , LOCKPRIMER 7649, HENKEL JAPAN LTD.
- ③ After Ref. No. ④ is inserted to Ref. No. ④ , Ref. No. ① is mounted on the panel.
Make sure that Ref. No. ④ does not have any factors to reduce water-resistancy,
such as scratch, twist, pinching, or dust.
- 4 The assembly of this product applies to the manual ETAD-C0302-00.

CAD change ③

3	Polyphenylene sulfide	(Black) UL94V-0	6	Brass	Nickel plating
2	Copper alloy	①	5	Phosphor bronze	Nickel plating
1	Polyphenylene sulfide	(Black) UL94V-0	4	Chloroprene rubber	(Black)
NO.	MATERIAL	FINISH , REMARKS	NO.	MATERIAL	FINISH , REMARKS
UNITS mm		SCALE 5:1	COUNT ③ 1	DESCRIPTION OF REVISIONS DIS-C-00021291	DESIGNED KS. TAKAHASHI
HIROSE ELECTRIC CO., LTD.		APPROVED : MO. SATOH	2005. 10. 21	DRAWING NO.	EDC-113558-71-71
		CHECKED : MO. SATOH	2005. 10. 21	PART NO.	HR30-6R-6PD (71)
		DESIGNED : EJ. KUNII	2005. 10. 21	CODE NO.	CL0130-1020-3-71
		DRAWN : EJ. KUNII	2005. 10. 21		
					DATE 2025. 12. 26
					CHECKED HY. KOBAYASHI