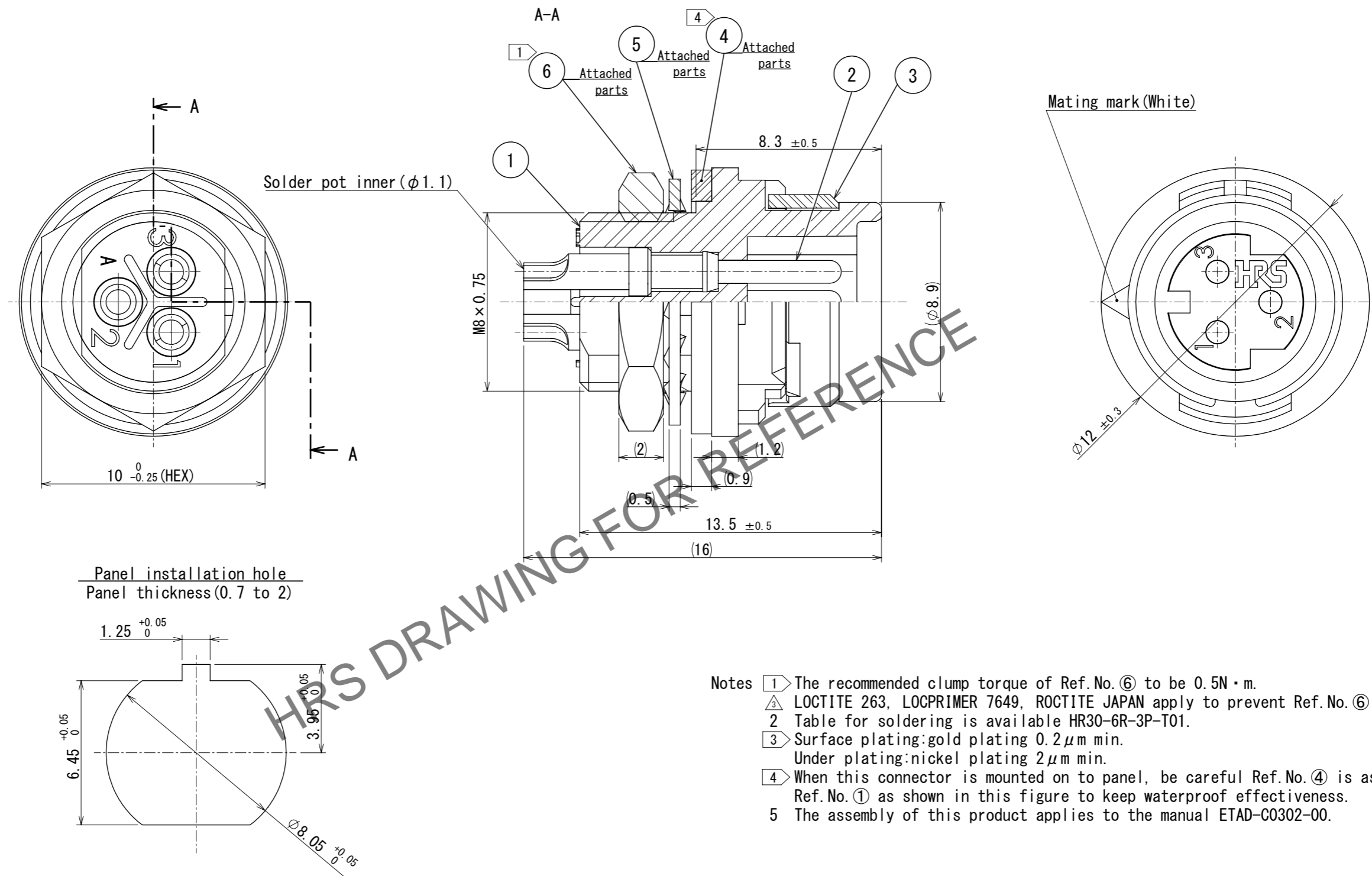


Feb.1.2026 Copyright 2026 HIROSE ELECTRIC CO., LTD. All Rights Reserved.  
In case of consideration for using Automotive equipment / device which demand high reliability, kindly contact our sales window correspondents.



- Notes
- ① The recommended clump torque of Ref.No.⑥ to be 0.5N・m.
  - ② LOCTITE 263, LOCPRIMER 7649, ROCTITE JAPAN apply to prevent Ref.No.⑥ from loosening.
  - ③ Table for soldering is available HR30-6R-3P-T01.
  - ④ Surface plating:gold plating 0.2μm min.  
Under plating:nickel plating 2μm min.
  - ⑤ When this connector is mounted on to panel, be careful Ref.No.④ is assembled surely Ref.No.① as shown in this figure to keep waterproof effectiveness.
  - ⑥ The assembly of this product applies to the manual ETAD-C0302-00.

CAD change ③

3	Polyphenylene sulfide	(Black) UL94V-0	6	Brass	Nickel plating
2	Brass	③	5	Phosphor bronze	Nickel plating
1	Polyphenylene sulfide	(Black) UL94V-0	4	Chloroprene rubber	(Black)
NO.	MATERIAL	FINISH , REMARKS	NO.	MATERIAL	FINISH , REMARKS
UNITS mm		SCALE 5:1	COUNT ③ 2	DESCRIPTION OF REVISIONS DIS-C-00020746	DESIGNED KS. TAKAHASHI
		APPROVED : MR. YOSHIDA	2005.01.05	DRAWING NO. EDC-112017-71-71	
		CHECKED : MO. SATOH	2005.01.05	PART NO. HR30-6R-3P (71)	
		DESIGNED : YH. YAMADA	2005.01.05	CODE NO. CL0130-1003-4-71	
		DRAWN : YH. YAMADA	2005.01.05		
				③ 1	1