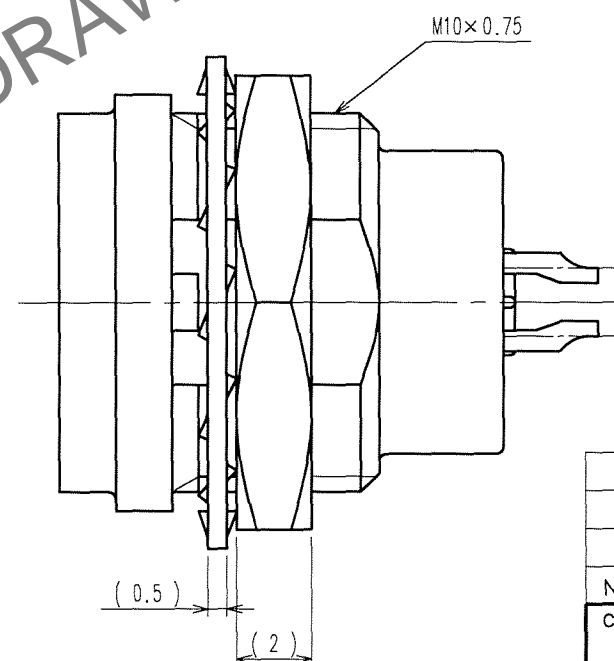
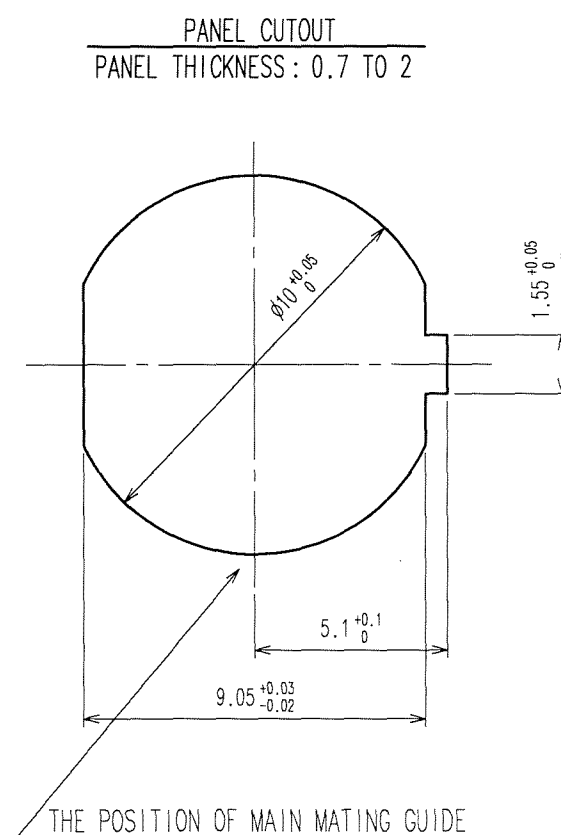
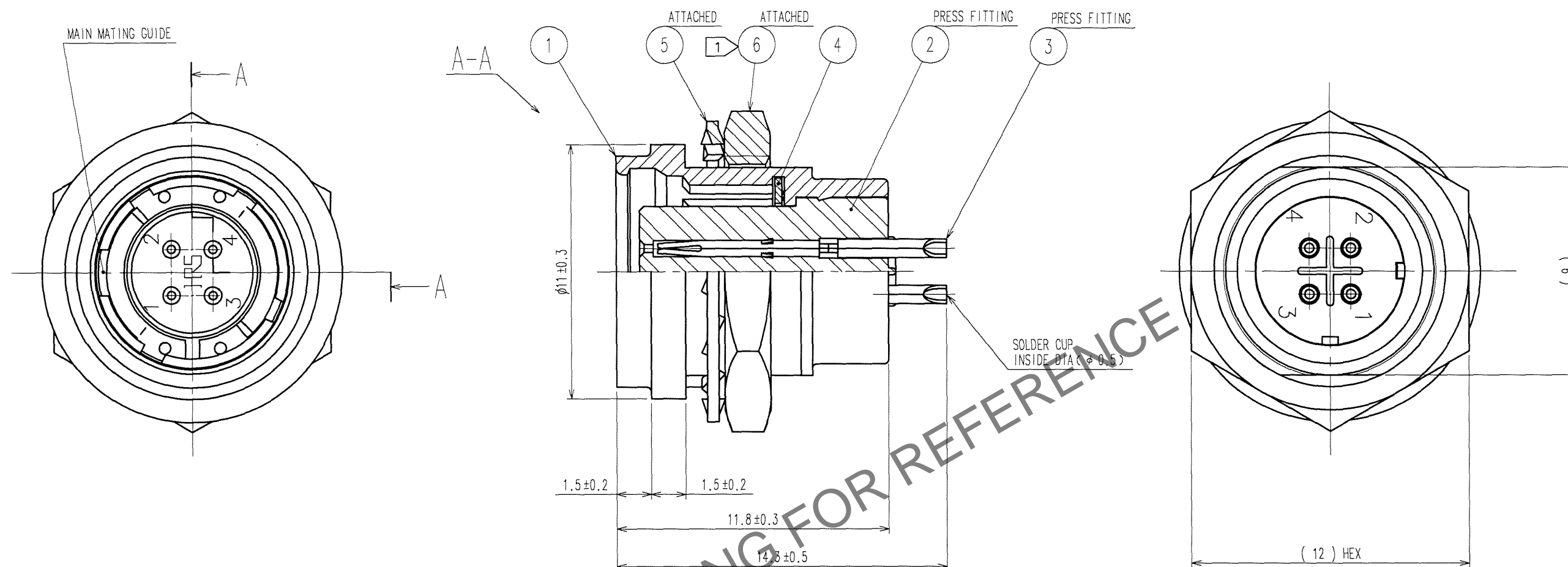



	COUNT	DESCRIPTION OF REVISIONS	BY	CHKD	DATE		COUNT	DESCRIPTION OF REVISIONS	BY	CHKD	DATE
▲	1	DIS-C-000585	T.K	E,K	07.07.27	▲					. .
▲					. .	▲					. .
▲						▲					. .



- NOTES ① THE RECOMMENDED TIGHTENING TORQUE OF REF. No. ⑥ TO BE 1 N·m.  
COATING WITH LOCTITE 242 MANUFACTURED BY HENKEL JAPAN OR EQUIVALENT IS RECOMMENDED  
TO PREVENT LOOSENESS.
- ② CONTACT AREA : GOLD 0.2μm min.  
TERMINAL AREA : GOLD FLASH.  
UNDER PLATING : NICKEL 2μm min.

3	PHOSPHOR BRONZE	2	5	BRASS	1	NICKEL PLATING	
2	POLYPHENYLENE SULFIDE	(BLACK) 94V-0	5	PHOSPHOR BRONZE		NICKEL PLATING	
1	ZINC ALLOY	MATTE FINISH NICKEL PLATING	4	BERYLLIUM COPPER		NICKEL PLATING	
NO.	MATERIAL	FINISH, REMARKS	NO.	MATERIAL		FINISH, REMARKS	
CODE NO. (OLD) CL			DRAWN M.SATO '06 09 27	DESIGNED Y.YAMADA '06 09 28	CHECKED /	APPROVED M.SATO '06 09 29	RELEASED /
		DRAWING NO. EDC3-115064		PART NO. HR25A-7R-4S			
SCALE 5 : 1		 HIROSE ELECTRIC CO., LTD		CODE NO. CL125-0622-5-00			1
UNITS mm							