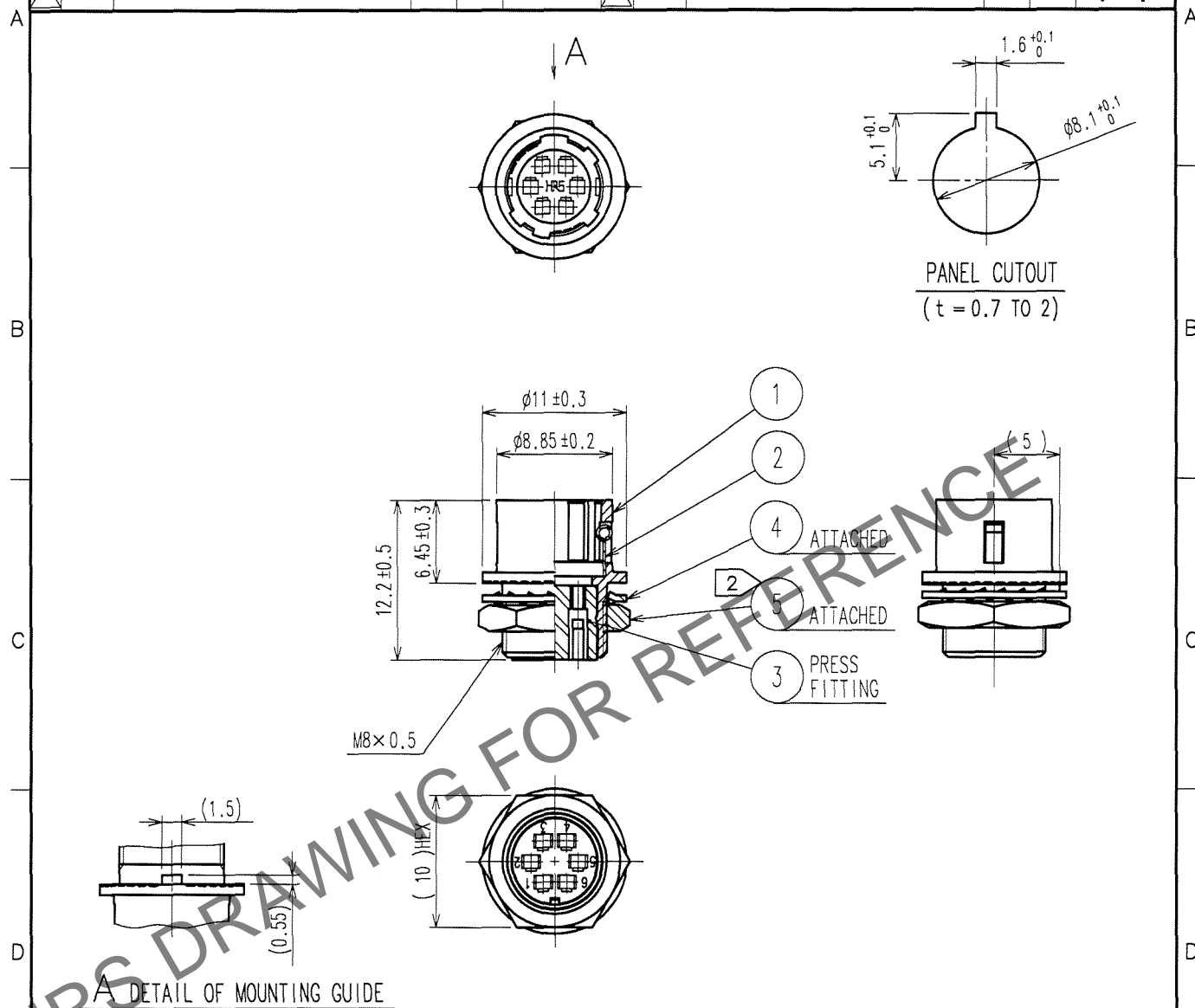
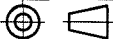



1					2					3					4				
COUNT	DESCRIPTION OF REVISIONS				BY	CHKD	DATE			COUNT	DESCRIPTION OF REVISIONS				BY	CHKD	DATE		
△										△									
△										△									
△										△									



- NOTES 1 APPLICABLE CRIMP CONTACT:HR10-PC-212(CL110-0514-3)
APPLICABLE WIRE:AWG#26 TO #30(COVERED WIRE MAX,OUTSIDE DIA.φ 1)
APPLICABLE CONTACT REMOVAL TOOL(EXTRACTION TOOL):RP6-SC-TP(CL150-0039-0)
2 THE RECOMMENDED CLAMP TORQUE OF REF. NO. ⑤ TO BE 1.5 N · m.
LOCTITE 242, HENKEL JAPAN OR EQUIVALENT IS RECOMMENDED TO
PREVENT REF. NO. ⑤ FROM LOOSENING.

3	POLYBUTYLENE TEREPHTHALATE	(BLACK)	UL94V-0				
2	STAINLESS STEEL			5	BRASS	NICKEL PLATING	
1	ZINC ALLOY	MATTE FINISH NICKEL PLATED		4	PHOSPHOR BRONZE	NICKEL PLATING	
NO.	MATERIAL	FINISH, REMARKS		NO.	MATERIAL	FINISH, REMARKS	
CODE NO. (OLD) CL			DRAWN	DESIGNED	CHECKED	APPROVED	RELEASED
			M. Sato 07.04.11	T. Hosoi 07.04.11	E. Kunita 07.04.11	M. Sato 07.04.11	
		DRAWING NO. EDC4-042729-73		PART NO. HR10G-7R-6PC(73)			
SCALE 2 : 1		 HIROSE ELECTRIC CO., LTD.		CODE NO. CL110-1706-0-73			1/1
UNITS mm							

HR

HIROSE ELECTRIC CO.,LTD.

CL110-1706-0-73