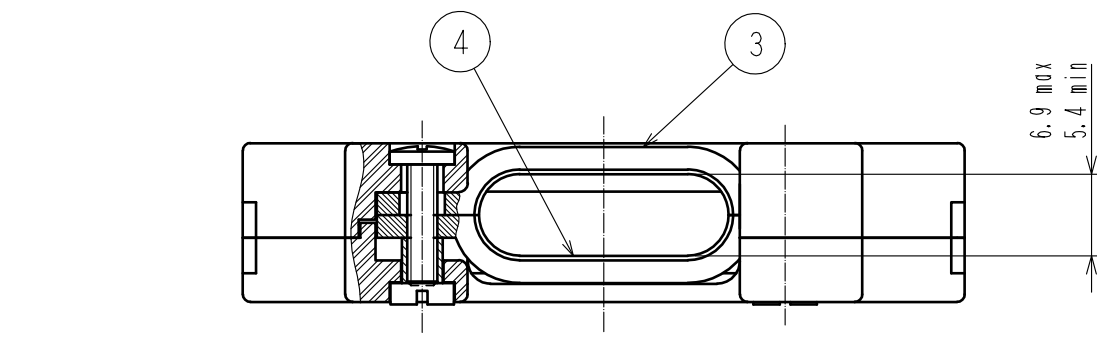
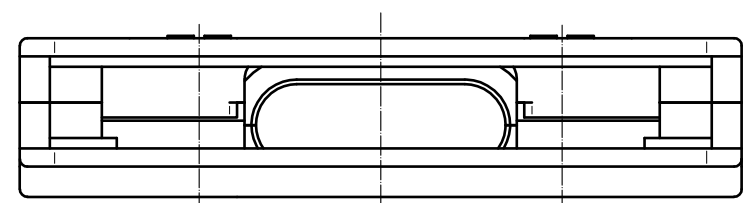
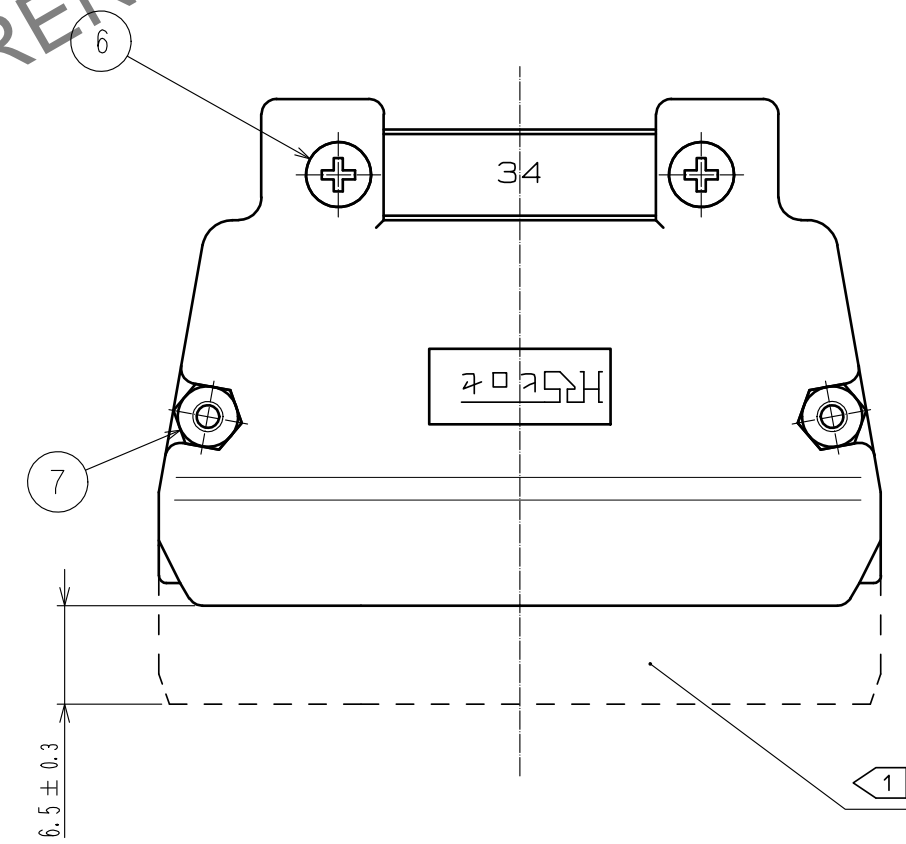
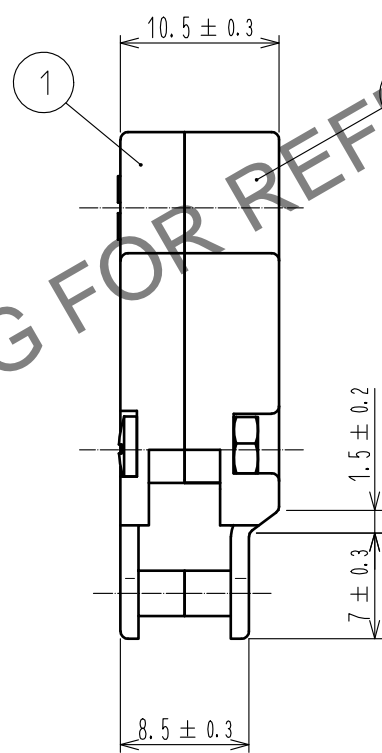
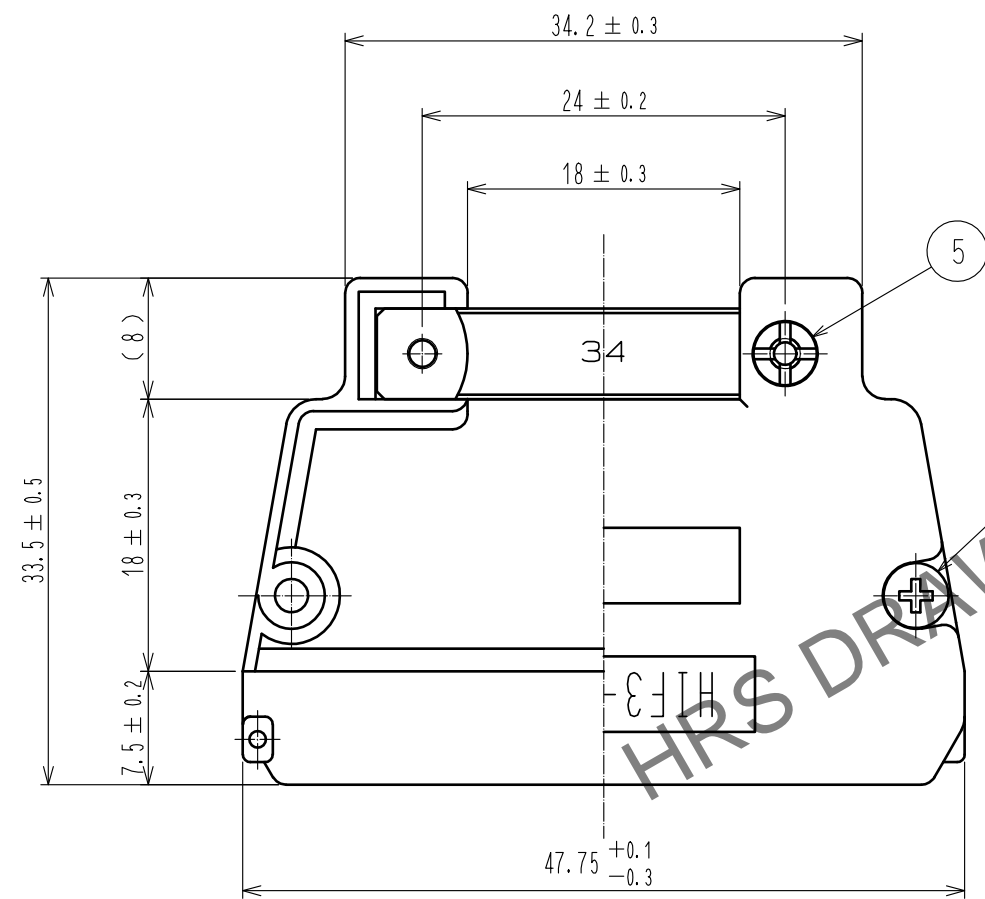
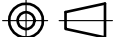





Dec.1.2025 Copyright 2025 HIROSE ELECTRIC CO., LTD. All Rights Reserved.
In case of consideration for using Automotive equipment / device which demand high reliability, kindly contact our sales window correspondents.



- Notes
- 1 Applicable housing to the Cover Case.
HIF3BA-34D-2.54C
 - 2 Pack part 3-7 in one bag. The bag, case(A) and (B) are to be packed together.
 - 3 The dimensions in parentheses are for reference.
 - 4 This product does not accept a pin header with F type lock as a corresponding connector.



4	STEEL	NICKEL PLATING		7	BRASS	NICKEL PLATING. M2 NUT				
3	STEEL	NICKEL PLATING		6	BRASS	NICKEL PLATING				
2	ABS	BLACK	UL94V-0			M2. L=8. SELF-BINDING SCREW				
1	ABS	BLACK	UL94V-0	5	BRASS	NICKEL PLATING				
NO.	MATERIAL	FINISH . REMARKS		NO.	MATERIAL	FINISH . REMARKS				
UNITS mm		SCALE 2 : 1		COUNT		DESCRIPTION OF REVISIONS		DESIGNED	CHECKED	DATE
						DIS-F-00003539		TM. NAKAJIMA	HT. YAMAGUCHI	18. 08. 02
 HIROSE ELECTRIC CO., LTD.			APPROVED : HS. OKAWA		12. 09. 11	DRAWING NO.	EDC3-016704-72			
			CHECKED : HT. YAMAGUCHI		12. 09. 11	PART NO.	HIF3-34CV<72>			
			DESIGNED : KJ. NISHIWAKI		12. 09. 11	CODE NO.	CL562-0204-8-72			
			DRAWN : CR. TAKESHIMA		12. 09. 11		 1/1			