

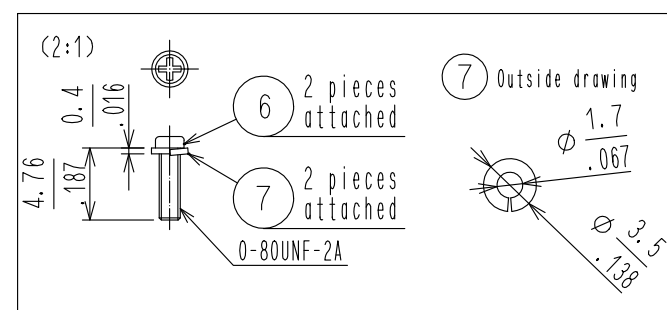
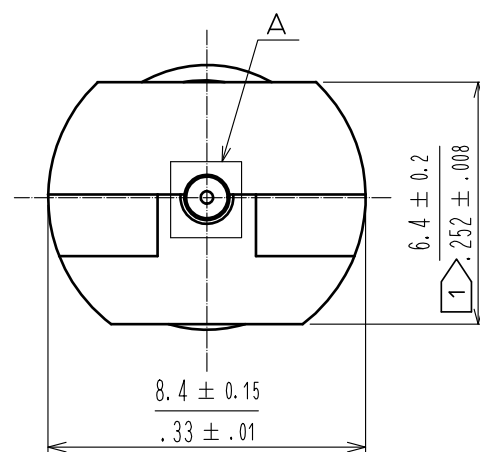
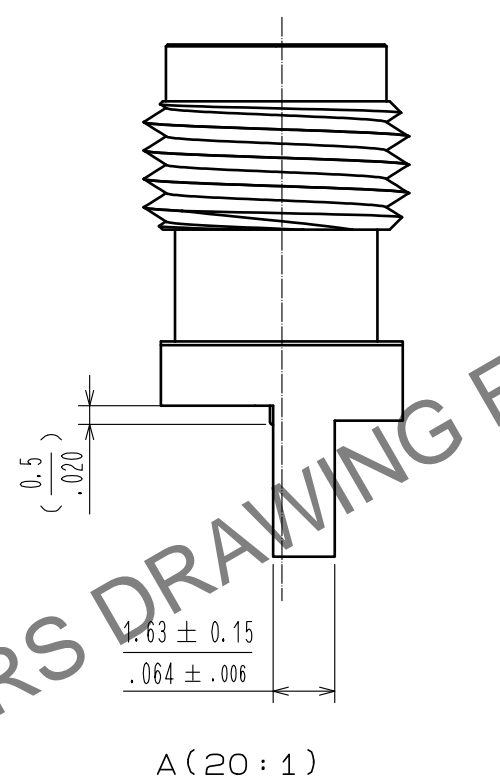
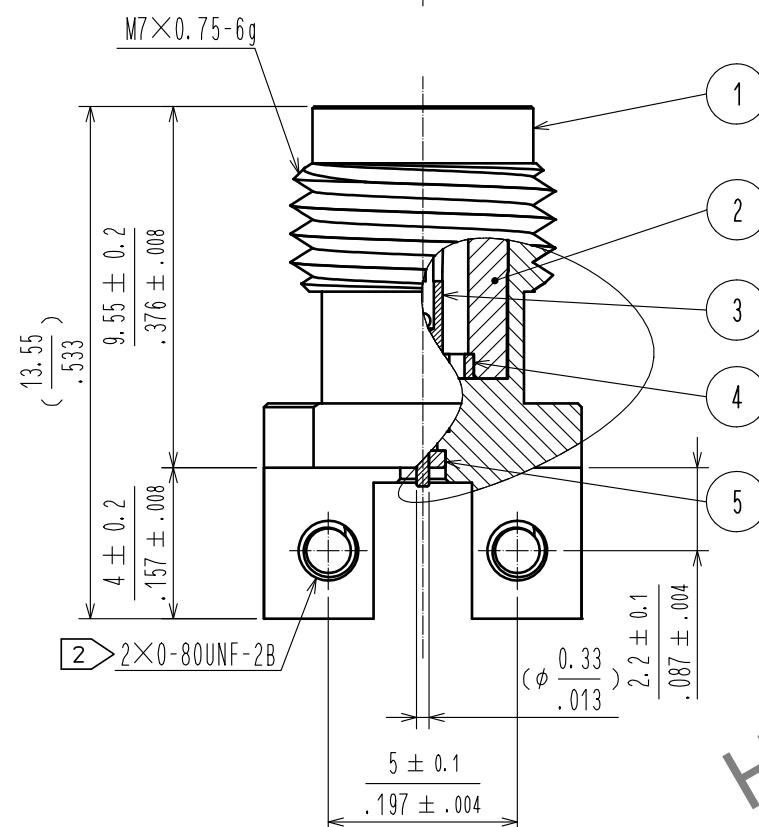
MARKING 2.4

MARKING HRS

2.4

HRS

The diagram shows a bolt and nut assembly. The bolt has a marking '2.4' on its head and 'HRS' on its shank. The nut has a marking 'HRS' on its top surface. The bolt is threaded into the nut.

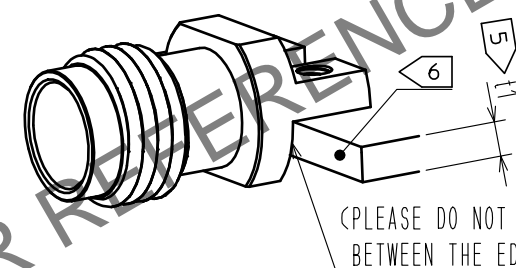


- NOTES

 - 1 WHEN MATING THE CONNECTOR, PLEASE HOLD MILLING AREA OF 6.4 ± 0.2 WITH A WRENCH.
 - 2 0-80UNF-2B SCREW TIGHTENING TORQUE IS $0.09 \text{ N} \cdot \text{m}$. PLEASE TIGHTEN THE SCREWS EVENLY WHEN MOUNTING THE CONNECTORS TO ENSURE STABLE ELECTRICAL CONTACT.
 - 3 PLEASE USE A PCB MOUNTING SCREW OF THE LENGTH OF $L(\text{mm})$.
THE LENGTH OF $L(\text{mm})$ IS PCB THICKNESS $t_1(\text{mm})$ + SPRING WASHER THICKNESS $t_2(\text{mm})$ + $1.8(\text{mm})$.
PLEASE USE A SCREW WITH SPRING WASHER.
 - 4 THE INDICATED DIMENSION IS THE CASE OF WHICH DIELECTRIC CONSTANT OF SUBSTRATE IS 3.35 AND THICKNESS IS $t=0.2\text{mm}$. LAND PATTERN LAYOUT DEPENDS ALSO ON ELECTRIC CONSTANT, THICKNESS AND LAYER CONSTRUCTION OF PCB. FOR BETTER PERFORMANCE, SIMULATION OF PCB WITH CONNECTOR IS RECOMMENDED.
 - 5 RECOMMENDED PCB THICKNESS t_1 IS GREATER THAN 1.0mm .
 - 6 SIDE PLATING OF THE BOARD IS RECOMMENDED.
 - 4 7. THIS PRODUCT IS A SOLDERLESS CONNECTOR FOR PROTOTYPE EVALUATION OF HIGH SPEED TRANSMISSION BOARDS. IT IS NOT RECOMMENDED FOR USE IN ACTUAL COMMERCIAL EQUIPMENT.

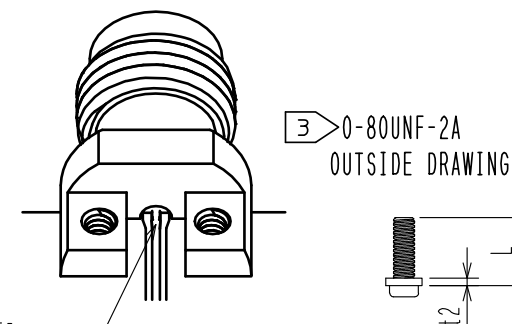
(1) WHEN THE CONNECTOR IS MOUNTED ON PCB, PLEASE DO NOT ALLOW A GAP BETWEEN THE EDGE OF PCB AND CONNECTOR.
(2) PLEASE MOUNT THE CONNECTOR AS LOCATED IN THE MIDDLE OF THE SIGNAL PAD OF PCB.

△ (Deleted (3))



(PLEASE DO NOT ALLOW A GAP
BETWEEN THE EDGE OF PCB AND CONNECTOR.)

(PLEASE MOUNT THE CONNECTOR AS LOCATED
IN THE MIDDLE OF THE SIGNAL PAD OF PCB.)



RECOMMENDED DIMENSIONS FOR THROUGH-HOLE MOUNTING

SIGNAL PAD

THE EDGE OF PCB

4.3 MIN

1.69

2.2 ± 0.05

0.087 ± .002

B

0.335 MIN

5 ± 0.03

0.197 ± .001

2 × Ø 1.7 ± 0.05

0.067 ± .002

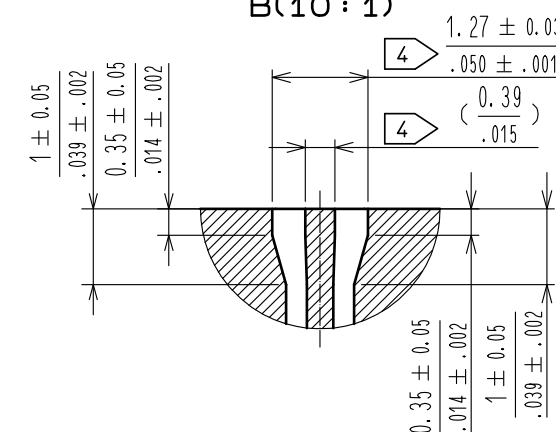
THROUGH HOLE


GROUND PAD

SIGNAL LINE

REGIST FOR SIGNAL PAD AND GROUND PAD IS PROHIBITED.

(DRAWING CHANGED)

$$B(10 : 1)$$


3	BERYLLIUM COPPER	GOLD PLATING	7	STAINLESS STEEL	Spring washer				
2	STAINLESS STEEL	PASSIVATE	6	STEEL	O-80UNF-2A Screw				
1	BRASS	NICKEL PLATING	5	POLYETHER IMIDE					
			4	POLYETHER IMIDE					
NO.	MATERIAL	FINISH . REMARKS		NO.	MATERIAL	FINISH . REMARKS			
UNITS mm/inch		SCALE 5 : 1		COUNT 2	DESCRIPTION OF REVISIONS DIS-D-00016641		DESIGNED TS. KANEKO	CHECKED TS. NAKAGAWA	DATE 2023082
 HIROSE ELECTRIC CO., LTD.	APPROVED : KH. IKEDA		20170123		DRAWING NO. EDC-368795-12-01				
	CHECKED : TS. NOBE		20170120		PART NO. H2. 4-LR-SR2<12>				
	DESIGNED : TP. MATSUMOTO		20170120		CODE NO. CL0338-0603-0-12				
	DRAWN : TP. MATSUMOTO		20170120		