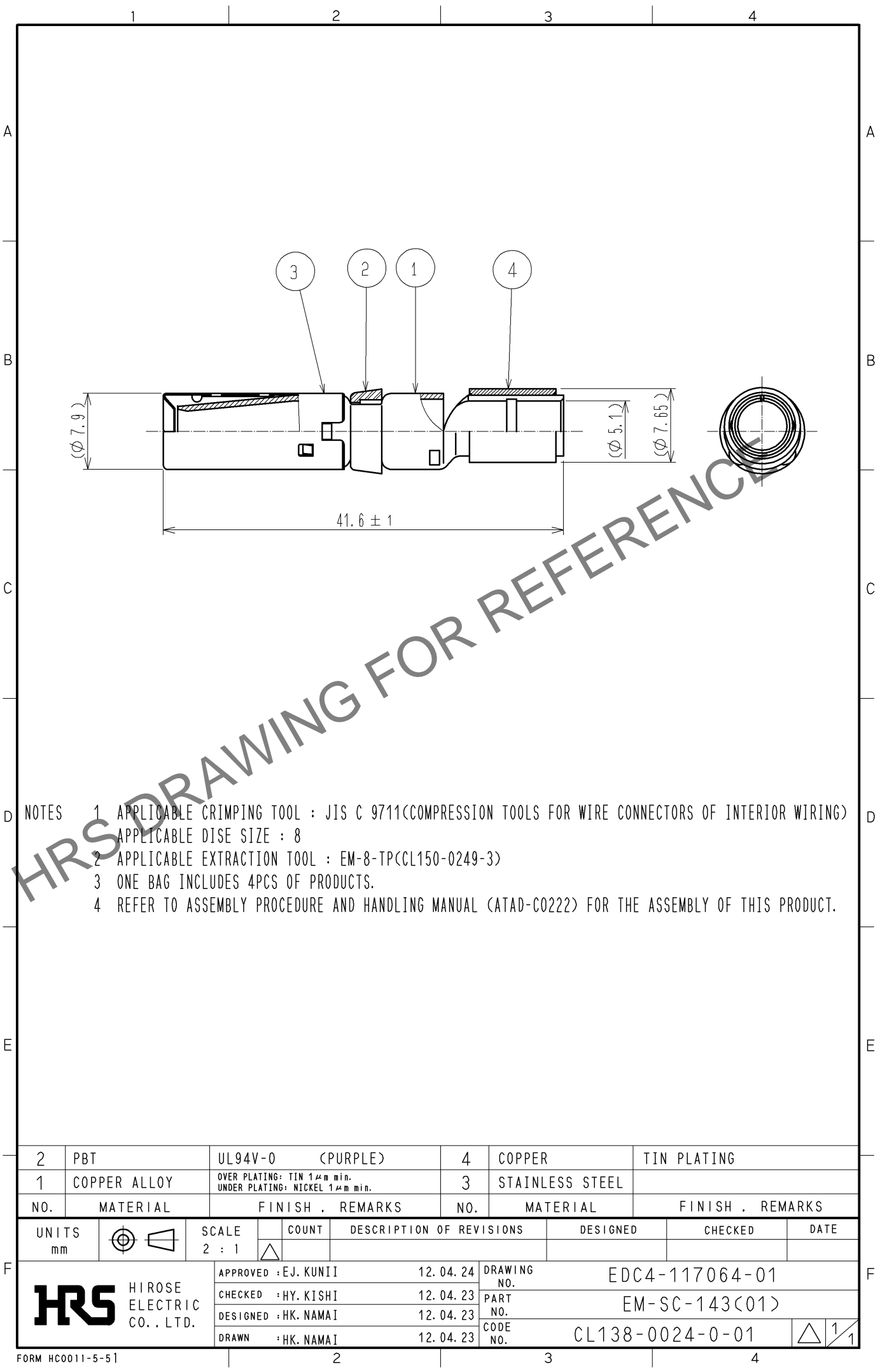


Sep.1.2025 Copyright 2025 HIROSE ELECTRIC CO., LTD. All Rights Reserved.  
In case of consideration for using Automotive equipment / device which demand high reliability, kindly contact our sales window correspondents.



- NOTES
- 1 APPLICABLE CRIMPING TOOL : JIS C 9711<COMPRESSION TOOLS FOR WIRE CONNECTORS OF INTERIOR WIRING>  
APPLICABLE DISE SIZE : 8
  - 2 APPLICABLE EXTRACTION TOOL : EM-8-TP<CL150-0249-3>
  - 3 ONE BAG INCLUDES 4PCS OF PRODUCTS.
  - 4 REFER TO ASSEMBLY PROCEDURE AND HANDLING MANUAL (ATAD-C0222) FOR THE ASSEMBLY OF THIS PRODUCT.

|     |              |  |     |                 |                  |
|-----|--------------|--|-----|-----------------|------------------|
| 2   | PBT          | UL94V-0 (PURPLE)   | 4   | COPPER          | TIN PLATING      |
| 1   | COPPER ALLOY | OVER PLATING: TIN 1μm min.<br>UNDER PLATING: NICKEL 1μm min. | 3   | STAINLESS STEEL |                  |
| NO. | MATERIAL     | FINISH , REMARKS   | NO. | MATERIAL        | FINISH , REMARKS |

|                           |  |                |           |                                 |                            |         |      |
|---------------------------|--|----------------|-----------|---------------------------------|----------------------------|---------|------|
| UNITS<br>mm               |  | SCALE<br>2 : 1 | COUNT<br> | DESCRIPTION OF REVISIONS        | DESIGNED                   | CHECKED | DATE |
| HIROSE ELECTRIC CO., LTD. |  |                |           | APPROVED : EJ. KUNII 12. 04. 24 | DRAWING NO. EDC4-117064-01 |         |      |
|                           |  |                |           | CHECKED : HY. KISHI 12. 04. 23  | PART NO. EM-SC-143<01>     |         |      |
|                           |  |                |           | DESIGNED : HK. NAMAI 12. 04. 23 | CODE NO. CL138-0024-0-01   |         |      |
|                           |  |                |           | DRAWN : HK. NAMAI 12. 04. 23    | 1/1                        |         |      |