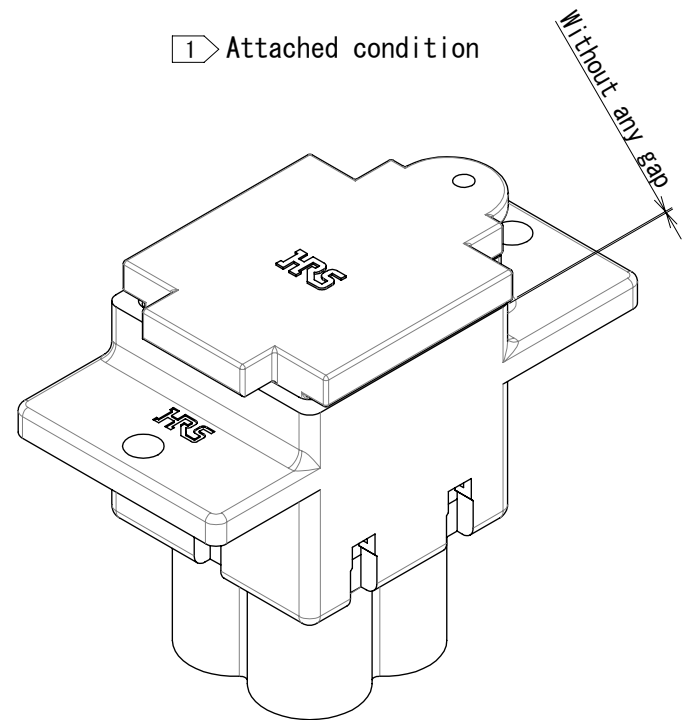
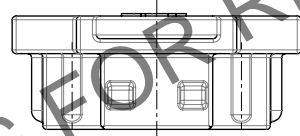
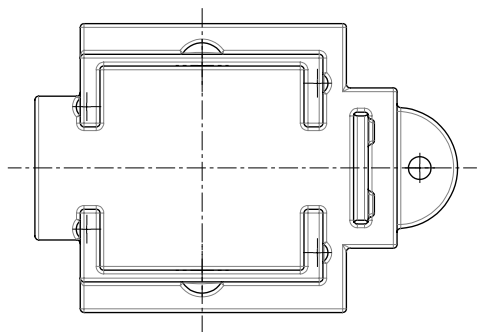
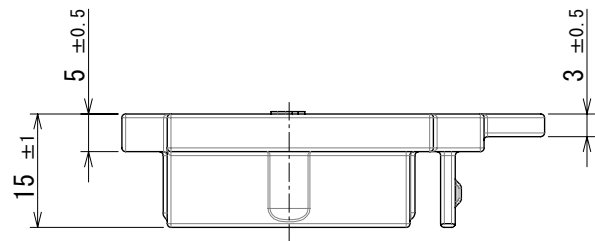
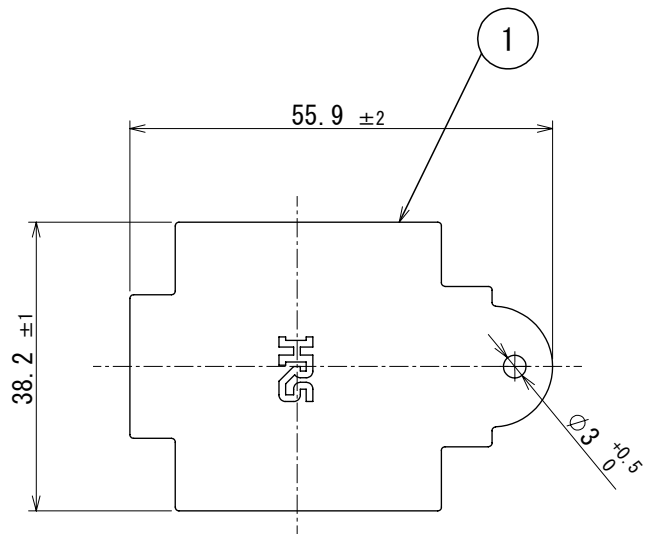


Dec.1.2025 Copyright 2025 HIROSE ELECTRIC CO., LTD. All Rights Reserved.
In case of consideration for using Automotive equipment / device which demand high reliability, kindly contact our sales window correspondents.



HRS DRAWING FOR REFERENCE

- Notes 1 This product shall be fitted to the connector without any gap such as attached condition.
2 This product is a cap for EM35MR※-4※.
It is applicable regardless of given alphabets or numbers shown at ※.

CAD change 1

1	Chloroprene rubber	(Black)						
NO.	MATERIAL	FINISH	REMARKS	NO.	MATERIAL	FINISH	REMARKS	
UNITS mm		SCALE 1:1	COUNT 1	DESCRIPTION OF REVISIONS DIS-C-00020795		DESIGNED HR. SATO	CHECKED KI. NAGANUMA	DATE 2025. 10. 20
HRS HIROSE ELECTRIC CO., LTD.		APPROVED : EJ. KUNII	2014. 02. 19	DRAWING NO.		EDC-117874-00-00		
		CHECKED : HY. KISHI	2014. 02. 19	PART NO.		EM35MR-C		
		DESIGNED : DS. MATSUNE	2014. 02. 18	CODE NO.		CL0138-0029-3-00		
		DRAWN : DS. MATSUNE	2014. 02. 18					