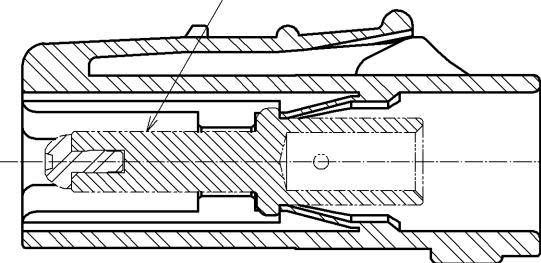


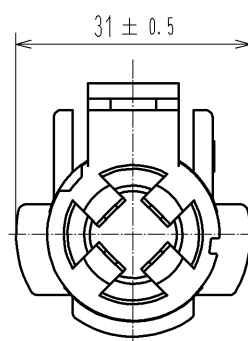
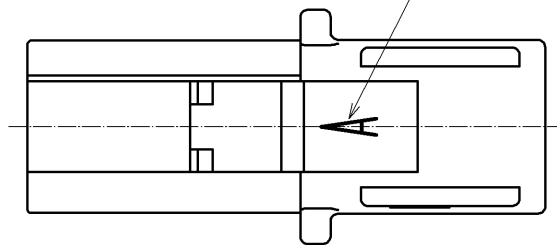
Feb.1.2026 Copyright 2026 HIROSE ELECTRIC CO., LTD. All Rights Reserved.
In case of consideration for using Automotive equipment / device which demand high reliability, kindly contact our sales window correspondents.

The state applicable contact assembled

2
Applicable contact(別売)

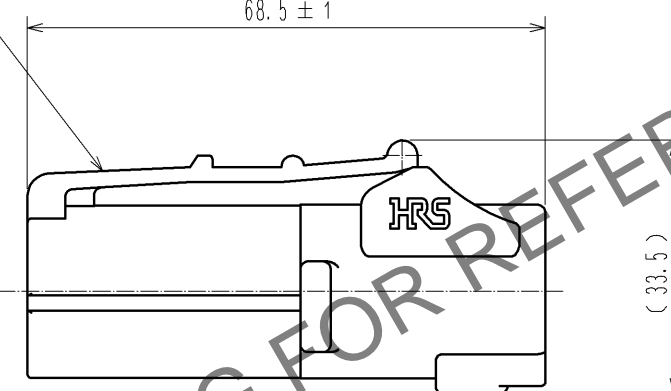


Mating mark

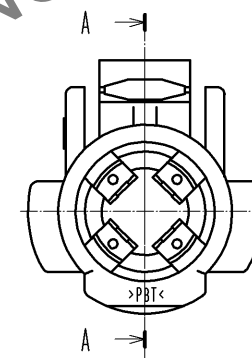


1

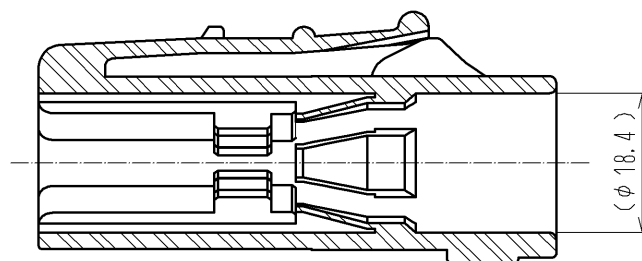
68.5 ± 1



(33.5)



A-A



(φ18.4)

Dimension in mated condition (1:2)
When mated, the plug is to be
at this indicated position.

M4 pan head machine screw
(Commercial item)

(60.75)

Applicable cable

EM12MR-1SCA(10)

Applicable cable

EM12MP-1PCA(10)(Plug)

Notes ⚠ WARNING 1 This connector is not hot pluggable.

2 Applicable crimp contacts:
EV1-PC-112(02)(CL139-0004-9-02)
EV1-PC1-112(02)(CL139-0005-1-02)

⚠ WARNING 3 Make sure that the connector is inserted
to the end and locked when mated.
Confirm that the connector is not unintentionally released
by pulling the cable with light force
to prevent incomplete mating condition.

1	PBT	UL94V-0 (Red)							
NO.	MATERIAL	FINISH . REMARKS	NO.	MATERIAL	FINISH . REMARKS				
UNITS mm		SCALE 1 : 1	COUNT △	DESCRIPTION OF REVISIONS	DESIGNED	CHECKED	DATE		
		APPROVED : SU. OBARA	14. 02. 04	DRAWING NO.	EDC3-118305-10				
		CHECKED : HY. KOBAYASHI	14. 02. 04	PART NO.	EM12MP-1PCA(10)				
		DESIGNED : HS. KAWASHIMA	14. 02. 04	CODE NO.	CL138-0031-5-10				
		DRAWN : HS. KAWASHIMA	14. 02. 04						