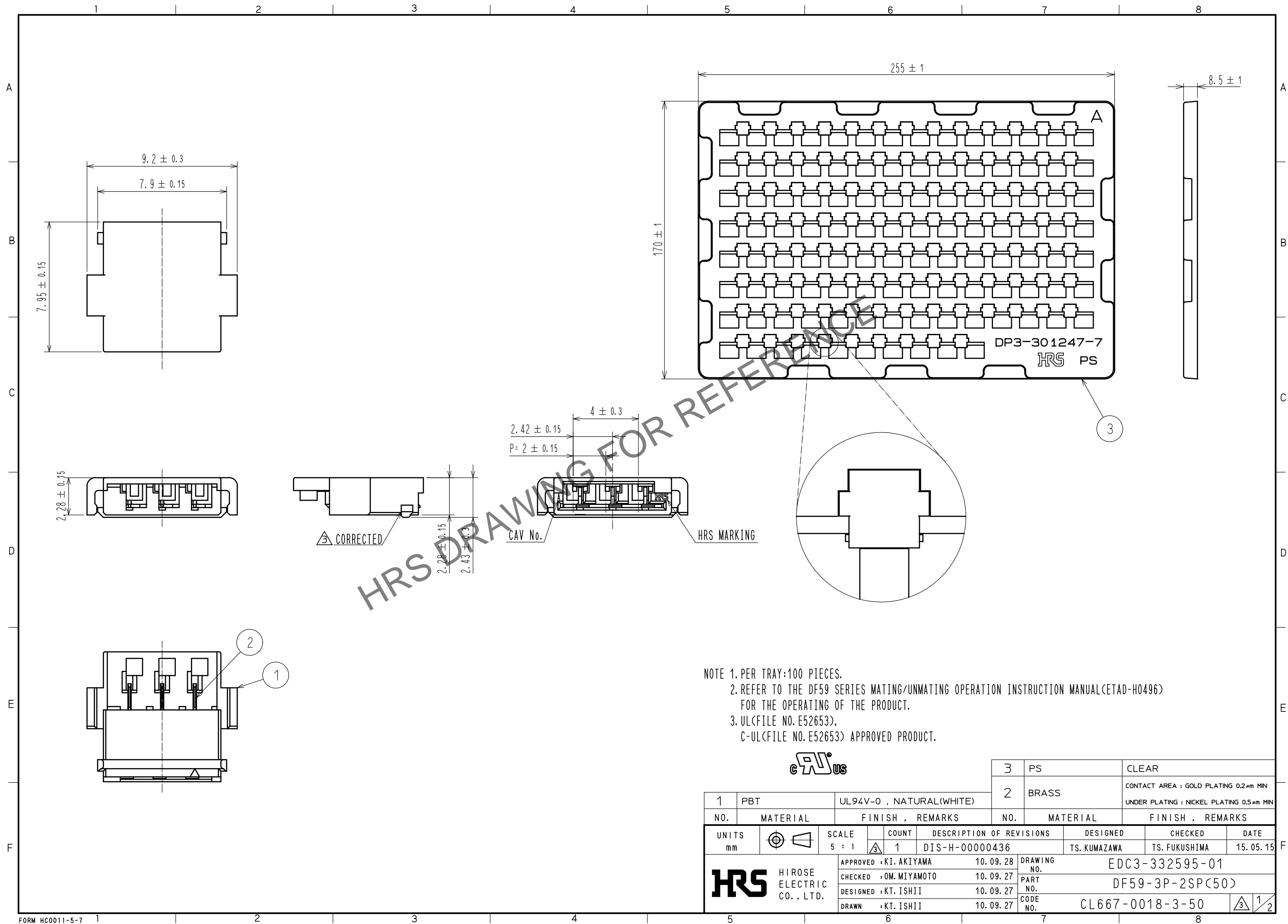


Sep.1.2025 Copyright 2025 HIROSE ELECTRIC CO., LTD. All Rights Reserved.  
In case of consideration for using Automotive equipment / device which demand high reliability, kindly contact our sales window correspondents.



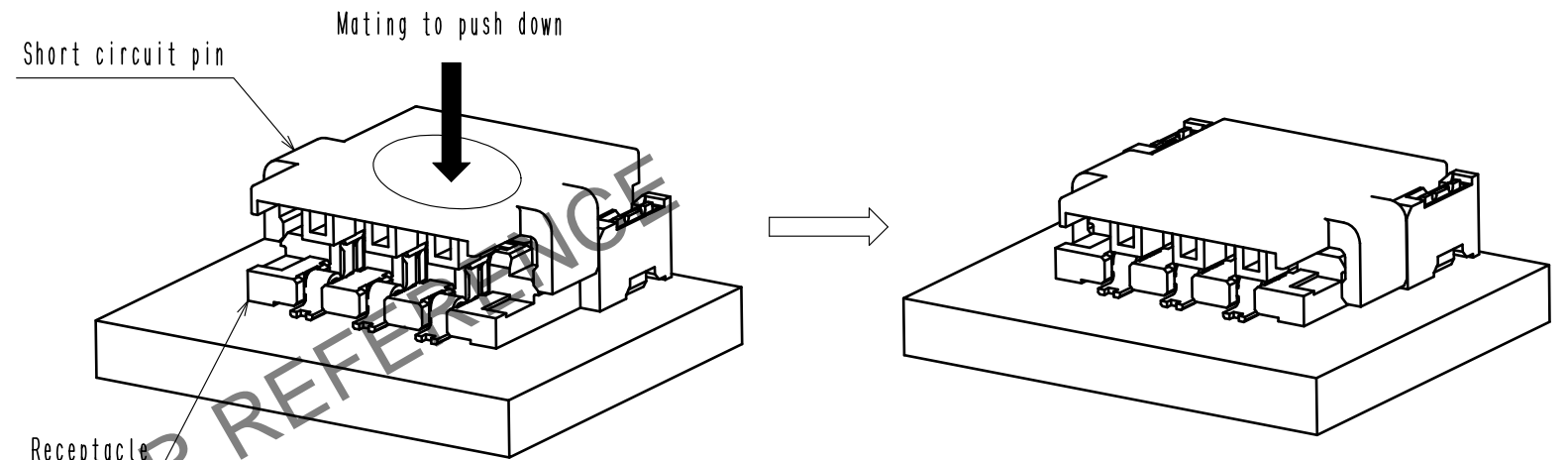
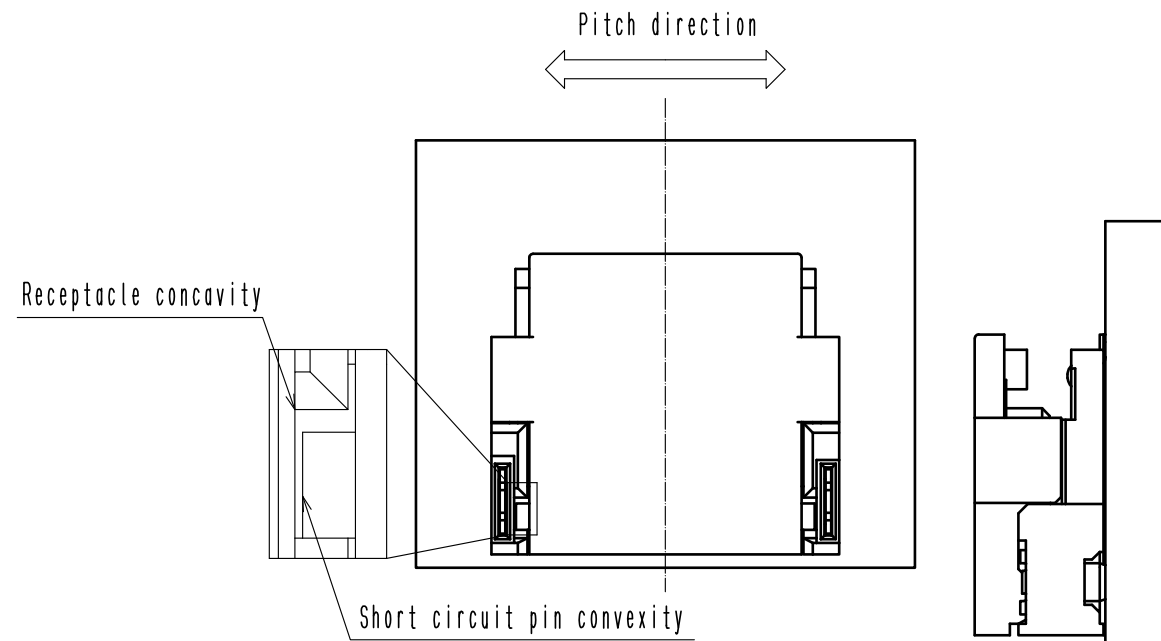
Sep.1.2025 Copyright 2025 HIROSE ELECTRIC CO., LTD. All Rights Reserved.  
In case of consideration for using Automotive equipment / device which demand high reliability, kindly contact our sales window correspondents.

# Operation Procedures for Crimp Socket

## 【 Mating 】

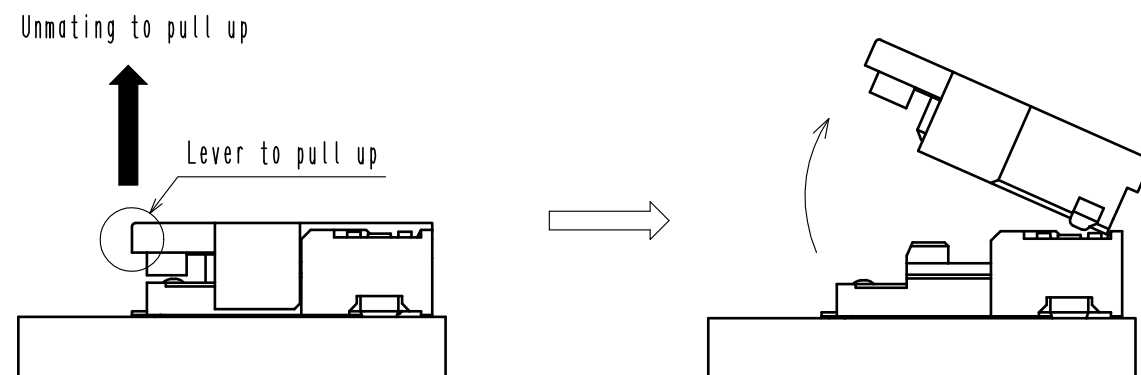
1. By positioning the convexity of the short circuit pin sides to the receptacle concavity, align the centers of the short circuit pin and the receptacle in pitch direction.

2. Press down at the center surface of short circuit pin.  
Note>Press down until the short circuit pin touches to the receptacle.



## 【 Unmating 】

1. Hook the lever with finger and lift up to the upper direction for unlock.



**HRS**

図番：	EDC3-332595-01
製品名：	DF59-3P-2SP<50>
製品コード	CL667-0018-3-50

3	2
---	---