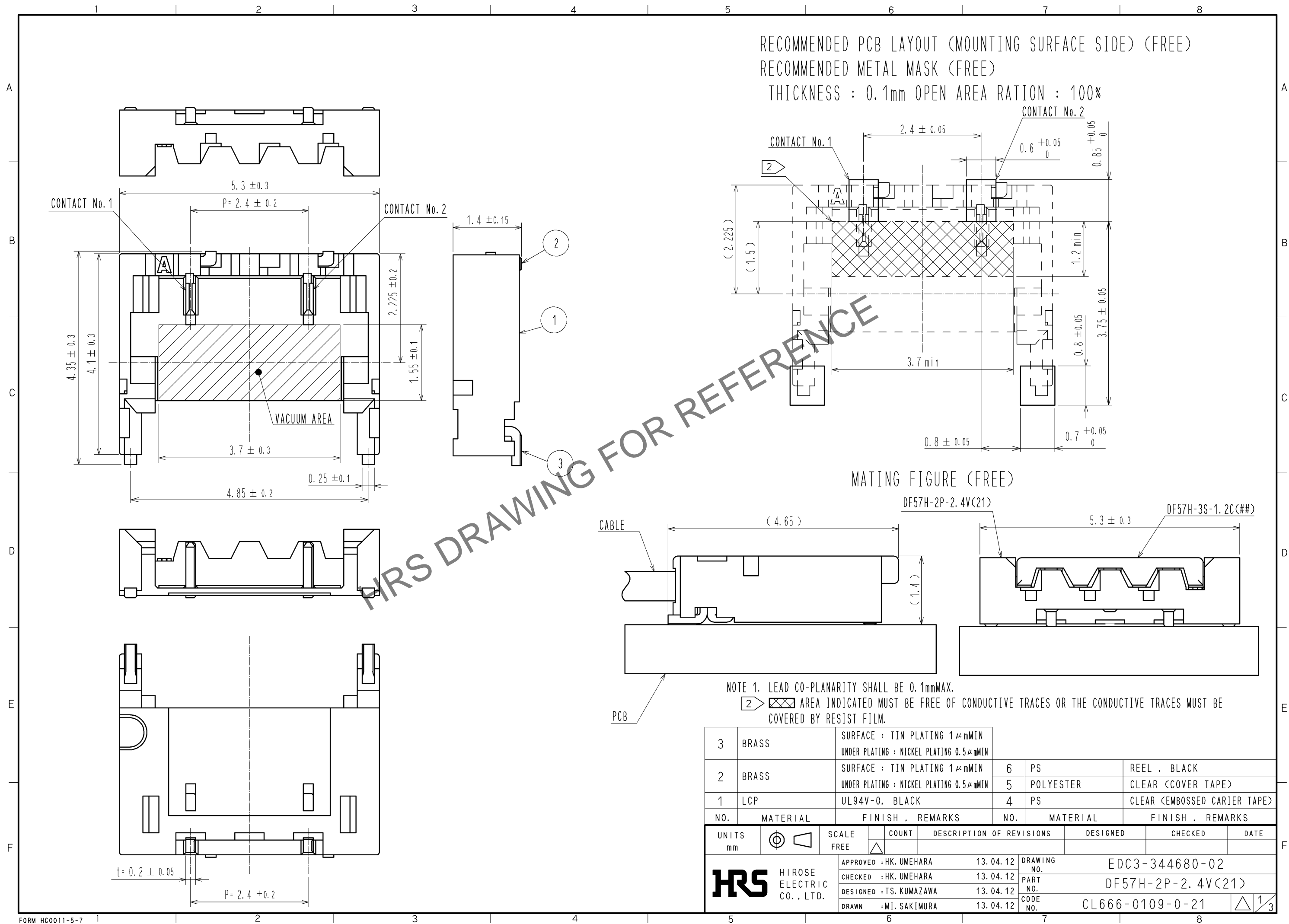
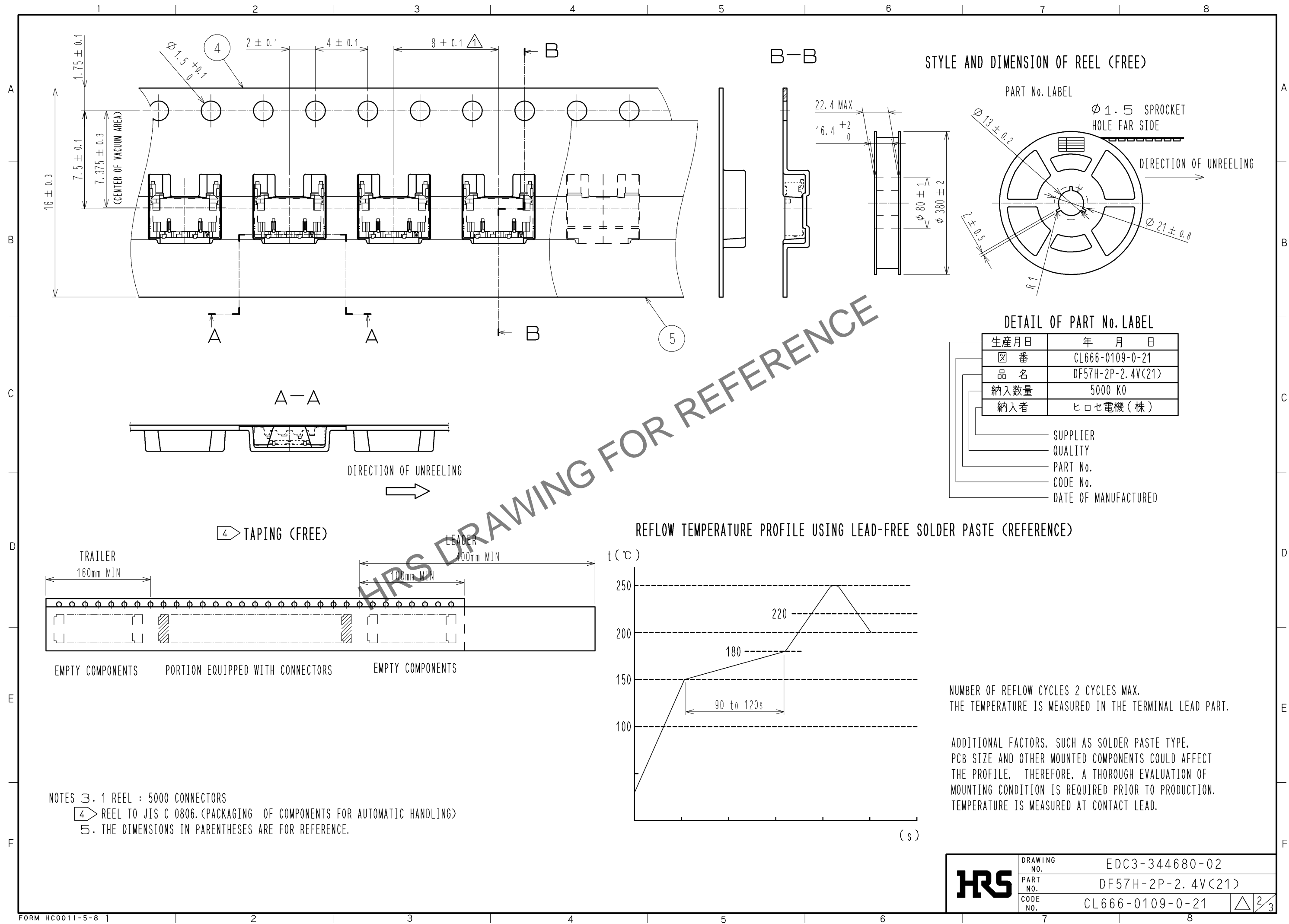


Dec.1.2025 Copyright 2025 HIROSE ELECTRIC CO., LTD. All Rights Reserved.
In case of consideration for using Automotive equipment / device which demand high reliability, kindly contact our sales window correspondents.



Dec.1.2025 Copyright 2025 HIROSE ELECTRIC CO., LTD. All Rights Reserved.
In case of consideration for using Automotive equipment / device which demand high reliability, kindly contact our sales window correspondents.

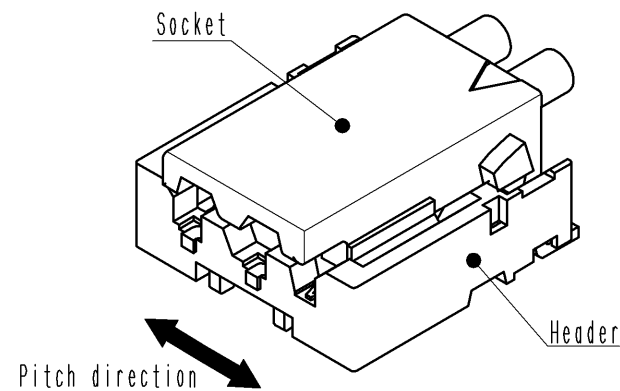


Dec.1.2025 Copyright 2025 HIROSE ELECTRIC CO., LTD. All Rights Reserved.
In case of consideration for using Automotive equipment / device which demand high reliability, kindly contact our sales window correspondents.

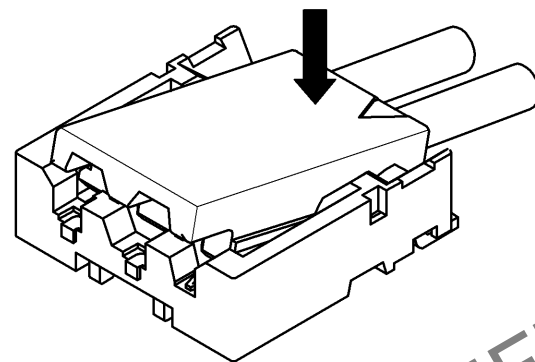
DF57 Series Mating / Unmating Operation Instruction

Mating

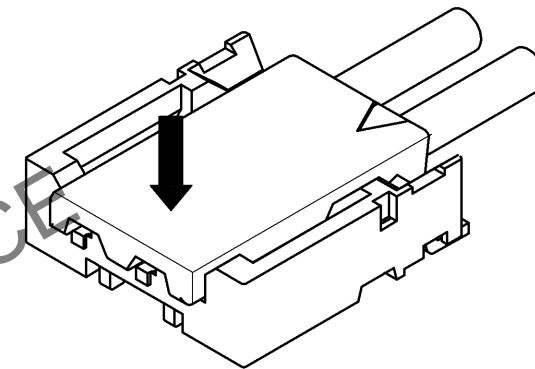
①By positioning the convexity of the socket sides to the header concavity, align the centers of the socket and the header in pitch direction.



②Slightly press the socket down at cable side to tilted angle.

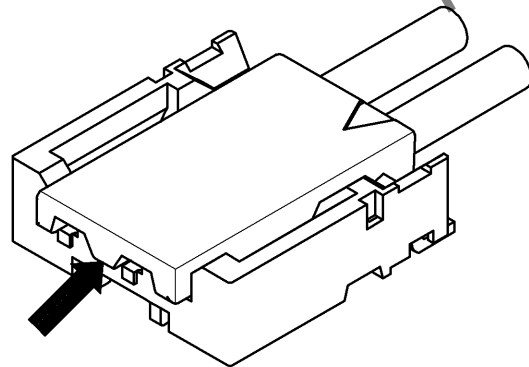


③Press down at the lever side with stabilizing the cable side to insert. Mating completes.

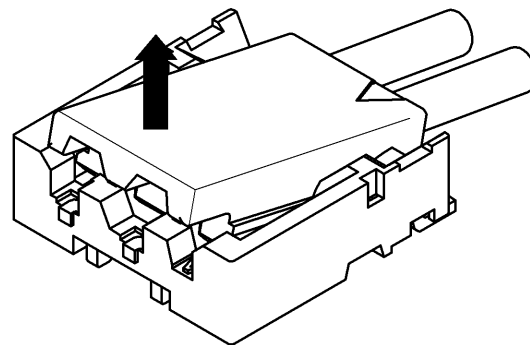


Unmating

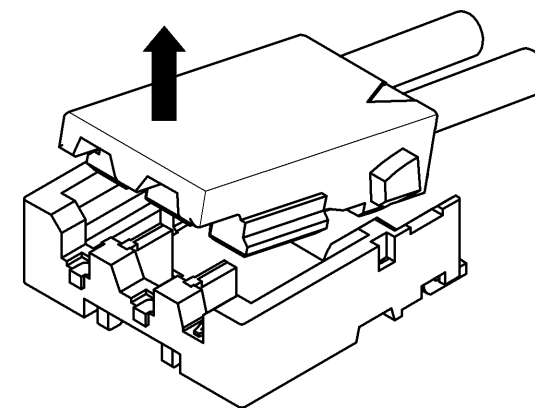
①Hook the lever with finger nail.



②Lift up to the upper direction and friction lock is released.



③Lift up to the upper direction and positive lock is released. Removal completes.



HRS

DRAWING NO.	EDC3-344680-02
PART NO.	DF57H-2P-2.4V<21>
CODE NO.	CL666-0109-0-21

3/3