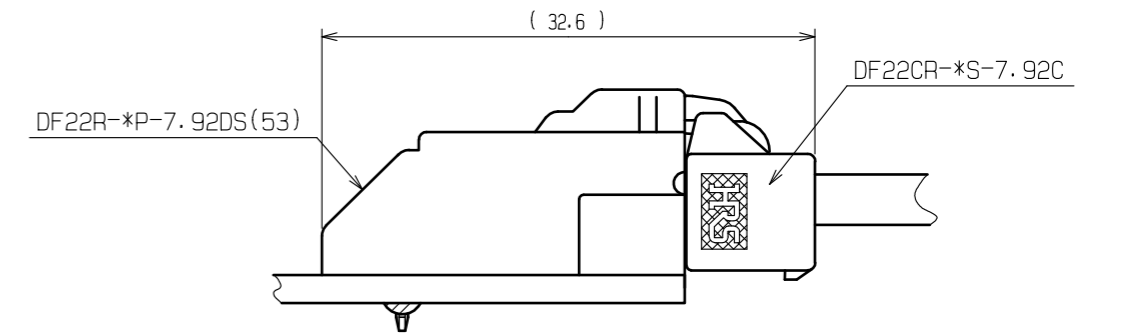
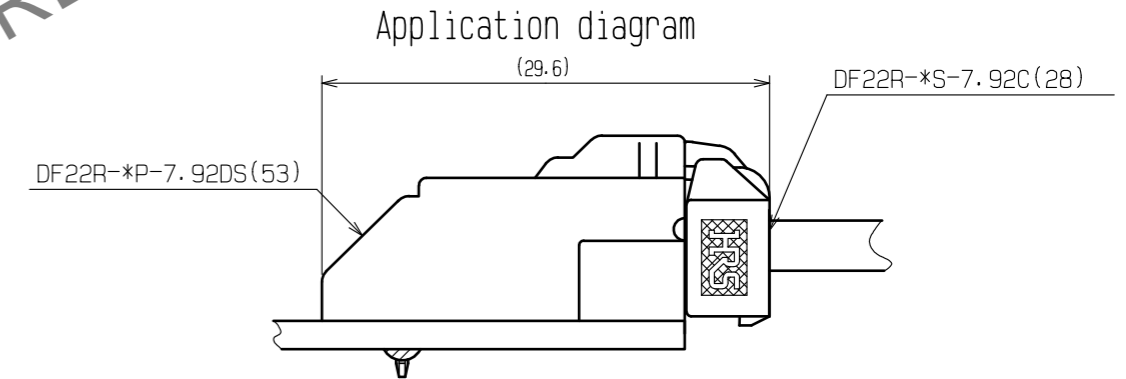
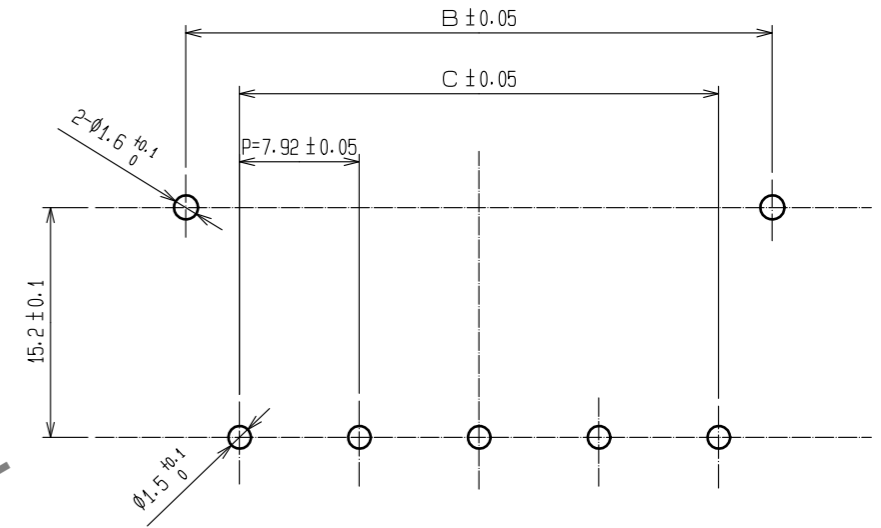
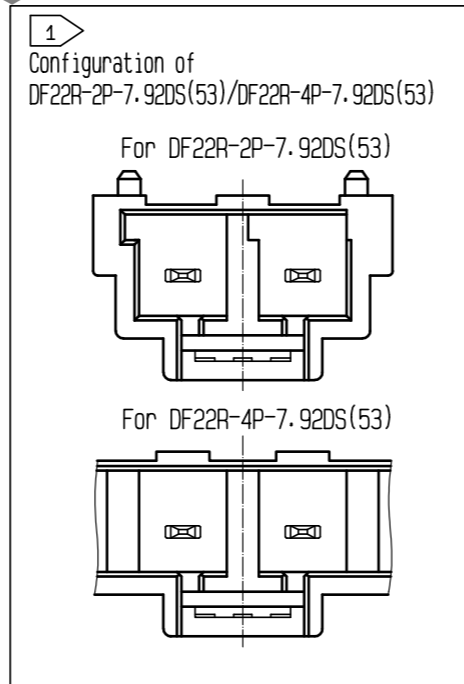
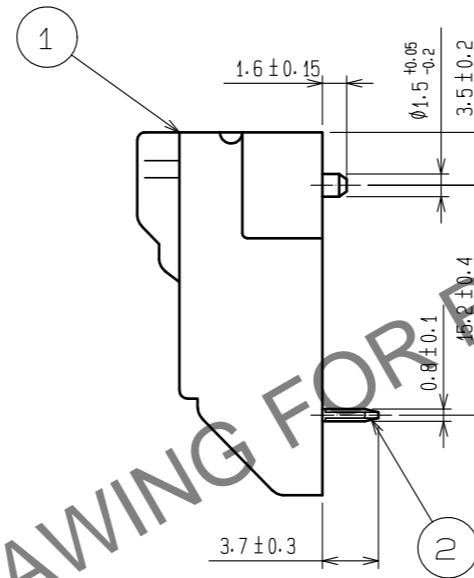
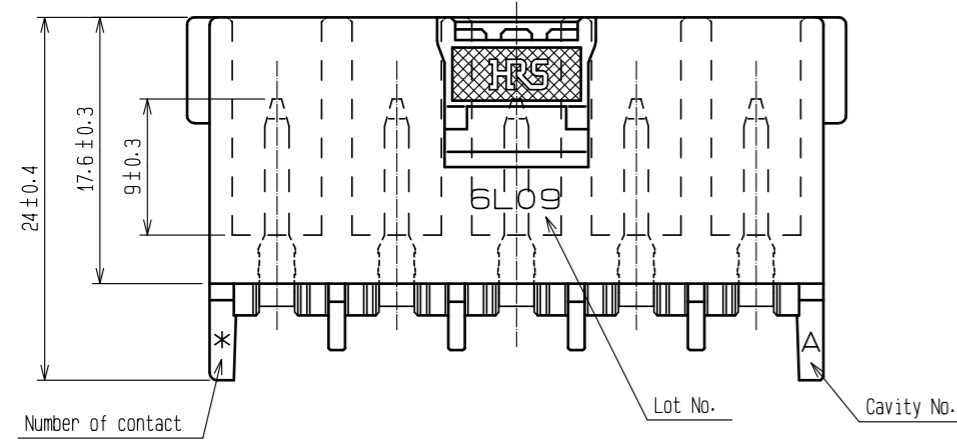




Part No.	Code No.	Number of contact	A	B	C
DF22R-2P-7.92DS(53)	CL680-1018-9-53	2	19.80	15.00	7.92
DF22R-3P-7.92DS(53)	CL680-1019-1-53	3	27.72	22.92	15.84
DF22R-4P-7.92DS(53)	CL680-1020-0-53	4	35.64	30.84	23.76
DF22R-5P-7.92DS(53)	CL680-1021-3-53	5	43.56	38.76	31.68



Notes 1 TWO AND FOUR CONTACTS ARE DIFFERENT SHAPE AS SHOWN.


2:UL(File no.E52653)

C-UL (File no. E52653)

TÜV(Certificate no.R9950703)



3:PER PACK:100PIECES

				2		Copper alloy		Contact area:Gold plating 0.2μm min Lead area:Tin plating 1μm min Under plating:Nickel plated 1μm min Other:Nickel plating 1μm min		
1	Polyamide		BLACK・UL94V-O							
NO.	MATERIAL		FINISH . REMARKS			NO.	MATERIAL		FINISH . REMARKS	
UNITS mm		SCALE 2 : 1		COUNT	DESCRIPTION OF REVISIONS		DESIGNED		CHECKED	DATE
 HIROSE ELECTRIC CO., LTD.		APPROVED : HS. OKAWA		20200309		DRAWING NO.		EDC-306228-53-00		
		CHECKED : SZ. ONO		20200309		PART NO.		DF22R- *P-7. 92DS(53)		
		DESIGNED : SN. MIWA		20200309		CODE NO.		CL680-		
		DRAWN : DS. HIROWATARI		20200306						

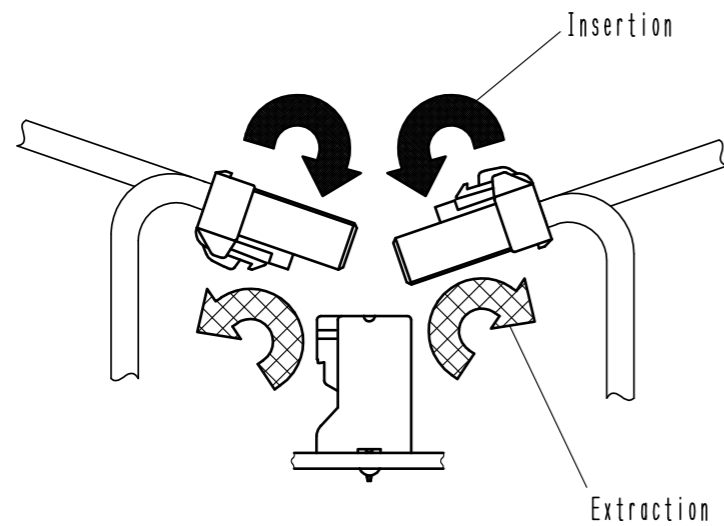
Nov.1.2025 Copyright 2025 HIROSE ELECTRIC CO., LTD. All Rights Reserved.
In case of consideration for using Automotive equipment / device which demand high reliability, kindly contact our sales window correspondents.

Precautions

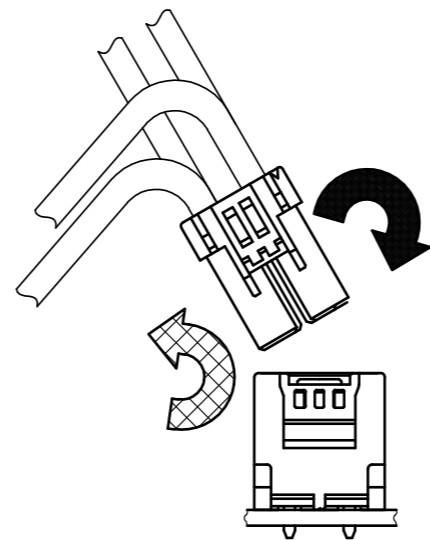
Notification for Insertion/Extraction

- 1) Please insert(extract) the crimping socket straight to the mating connector.
Insertion(extraction) at tilted angles applies load concentration to the connector end and may cause deformation (at connection area, socket and header case, etc). There is firing risk using this kind of deformed connector.

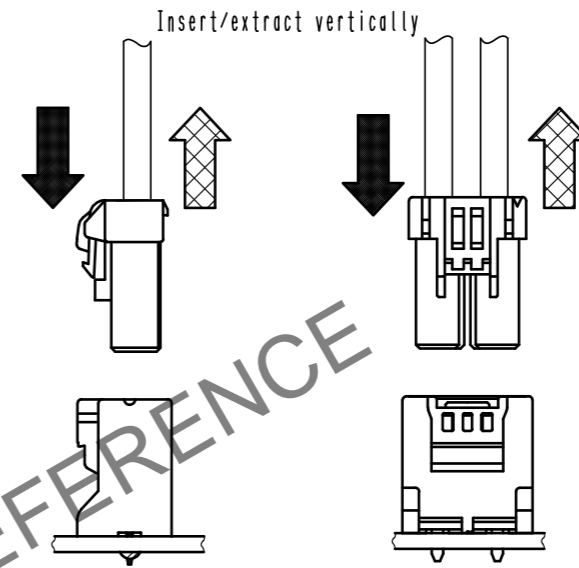
Insertion(Extraction)



NG



NG

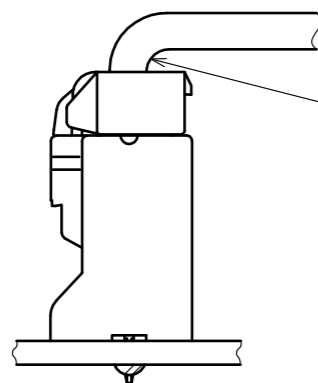


OK

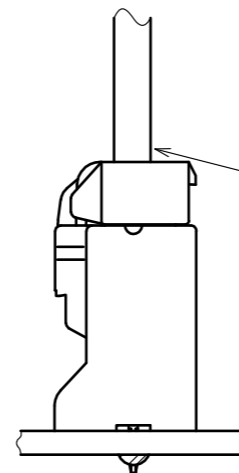
- 2) When it is hard to extract, please lightly insert the connector beforehand and then pull it with releasing the lock.
Forced extraction has a risk of connector breakage.

Notification of wiring

- 1) When using a thick cable, short cable length and bending close to the connector end, these load concentration may cause deformation.
Please note that there is firing risk using deformed connector.
When installing, please refrain from stress concentration such as cable bending close to the connector end or cable twisting.



NG



OK

- 2) Since this product uses thick wires, a larger load is applied to the connector when inserting/extracting or routing the wires.
Please use a retainer to reduce the load on the connector.

HR5

DRAWING NO.	EDC-306228-53-00
PART NO.	DF22R-*P-7.92DS(53)
CODE NO.	CL680-

2/2