

## Low-Profile Hybrid FPC-to-Board Connector Supporting 5A



## Features

- 1 Low-profile design with high power supply capacity
  - Rated current: 5A for power contact, 0.3A for signal contact
  - 0.6mm stacking height, 1.9mm width
- 2 Full armored design prevents housing damage
- 3 Easy mating operation with wide self alignment range
- 4 Insert molded header and receptacle design
  - Solder Wicking Prevention
- 5 Multi-point soldering enhances PCB peeling strength



P= 0.3mm



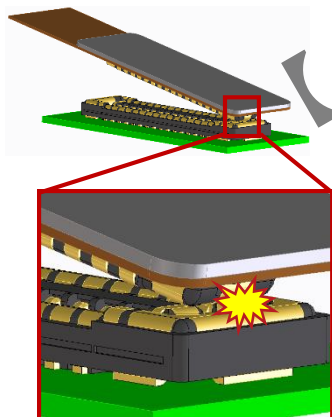
Full Armored



High-Current

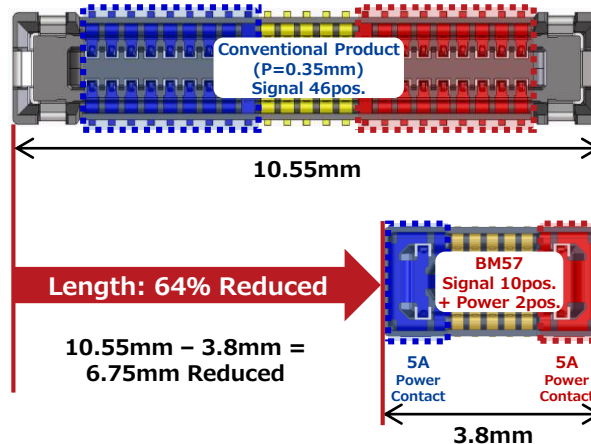
## Robust Design

## Fully Armored Design Prevents Housing Damage



## High Current (5A)

## Power Contact Saves Space



## Specifications

Rated Current	Power Contact: 5A Signal Contact: 0.3A
Rated Voltage	30V AC/DC
Operating Temperature	-55 to +85°C*
Contact Resistance	Power Contact: 30mΩ Max. Signal Contact: 90mΩ Max.
Withstanding Voltage	100V AC for 1 min.
Insulation Resistance	50MΩ Min. (100V DC)
Mating Durability	10 times

\*Includes the temperature rise due to current flow.

- Pin Count Variation: 10pos.