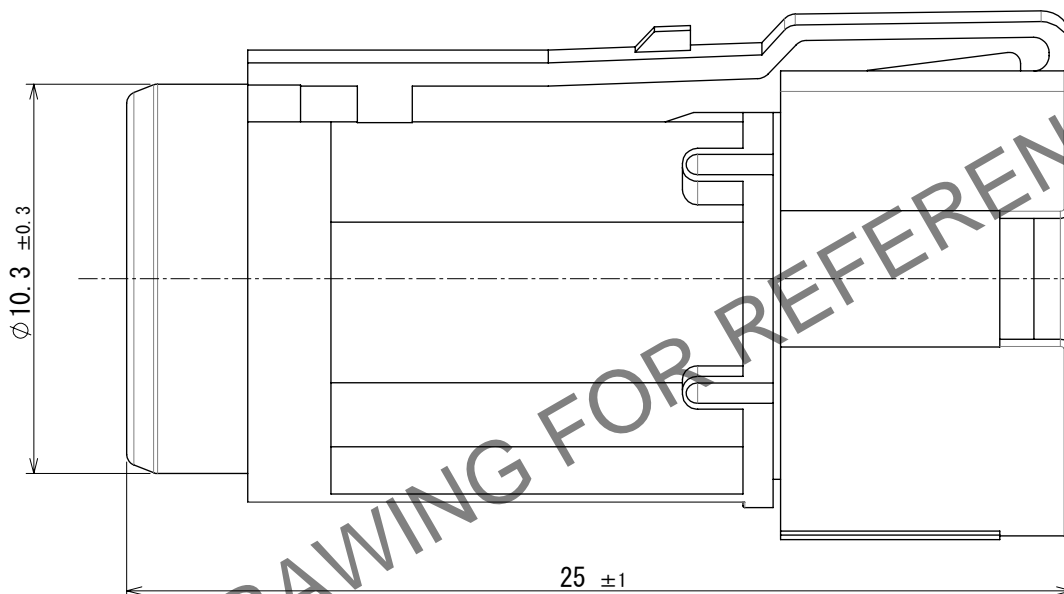
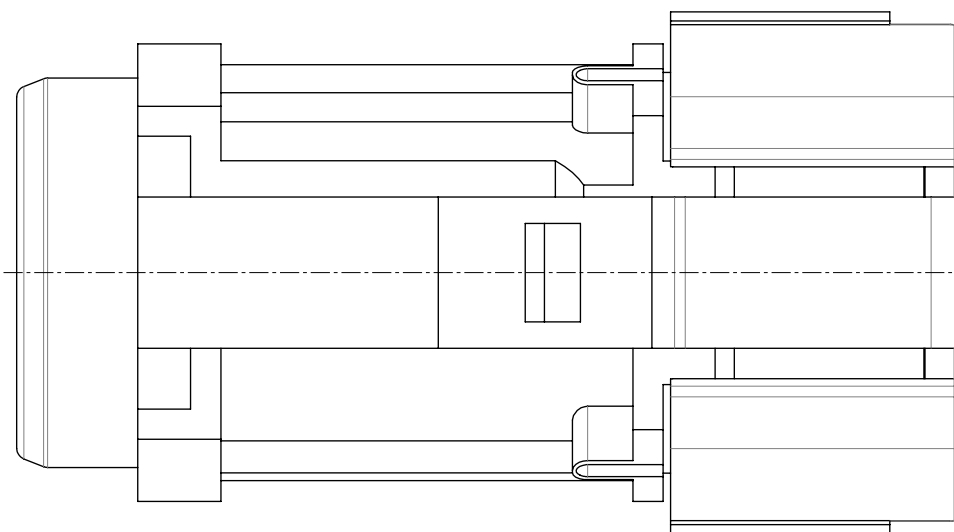
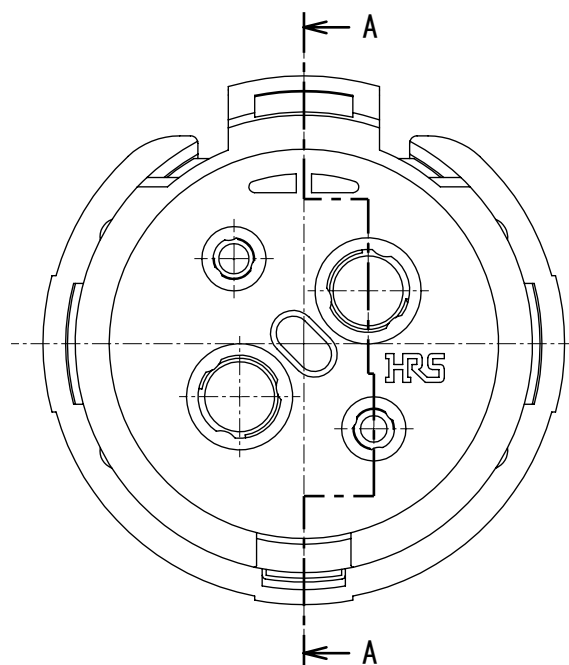
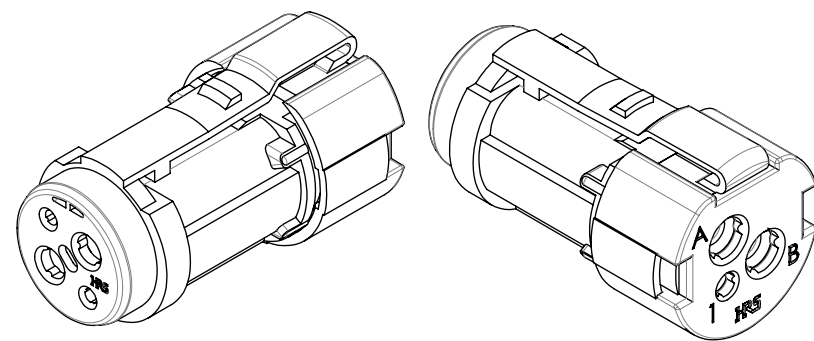
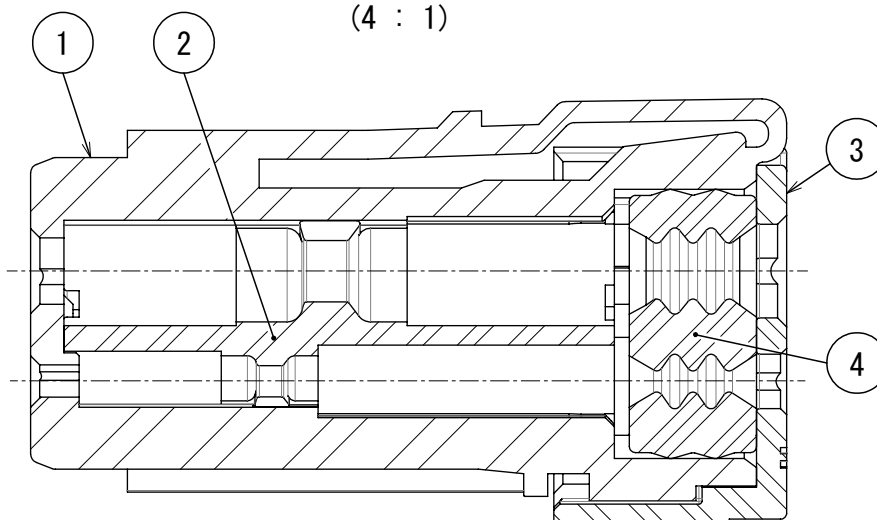
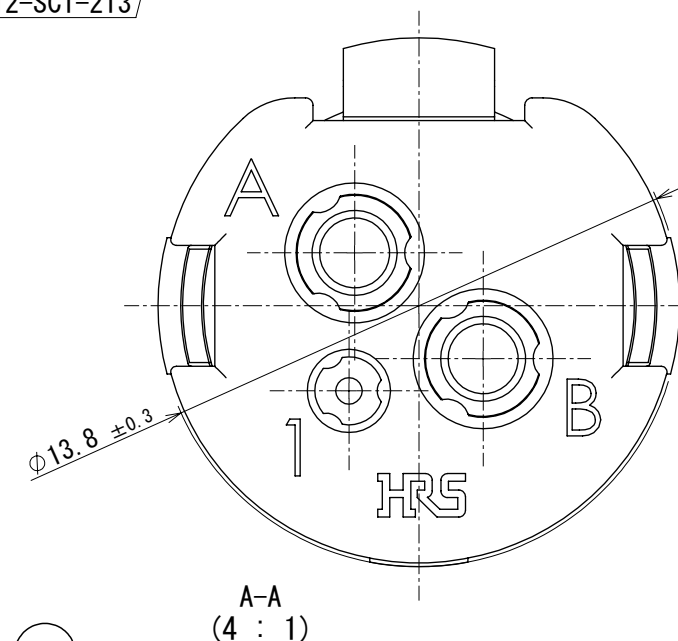
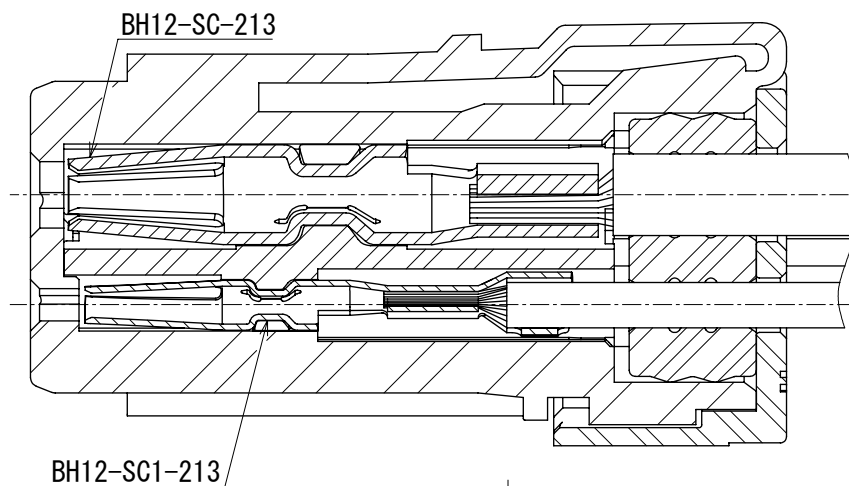


Jan.1.2026 Copyright 2026 HIROSE ELECTRIC CO., LTD. All Rights Reserved.
In case of consideration for using Automotive equipment / device which demand high reliability, kindly contact our sales window correspondents.

Isometric drawing(2:1)



A-A The state applicable contacts assembled. (4:1)



- Notes
1. This product is delivered disassembled.
 2. Applicable crimp contact
Power : BH12-SC-213(CL140-0014-0-00) (Applicable wire:AWG#14 to 16 Wire jacket diameter: $\phi 2.6$ to 3.0)
Signal : BH12-SC1-213(CL140-0015-0-00) (Applicable wire:AWG#22 to 24 Wire jacket diameter: $\phi 1.4$ to 1.6)
 3. The assembly of this product applies to the manual ETAD-C0454-00.
 4. The cable pull and twisting strength, waterproof tightness and other characteristics may differ, depending on the cable structure, please confirm before the use.
 5. Please do not use this connector in the condition of incomplete mating.
Otherwise, the electrical performance, waterproofness, and lock strength cannot meet the defined specifications.
 6. Remove the plug while pressing with a finger the lock spring on the plug to unlock.
To prevent the lock hanger from being damaged or the cables from being disconnected, do not remove the plug when it is locked.
Please avoid force is applied to particular cable.

CAD change

2	Polybutylene terephthalate	(Black) UL94V-0	4	Silicone rubber	(Red)
1	Polybutylene terephthalate	(Black) UL94V-0	3	Polybutylene terephthalate	(Black) UL94V-0
NO.	MATERIAL	FINISH , REMARKS	NO.	MATERIAL	FINISH , REMARKS
UNITS mm		SCALE 5:1	COUNT 1	DESCRIPTION OF REVISIONS DIS-C-00019682	DESIGNED DS. UZAKI
		APPROVED : YH. YAMADA	2020. 01. 28	DRAWING NO.	EDC-390398-00-00
		CHECKED : HN. TANAKA	2020. 01. 28	PART NO.	BH12WP-3SC
		DESIGNED : SH. KOYAMA	2020. 01. 28	CODE NO.	CL0140-0011-0-00
		DRAWN : SH. KOYAMA	2020. 01. 28		
				DATE	2025. 08. 13
				CHECKED	HN. TANAKA