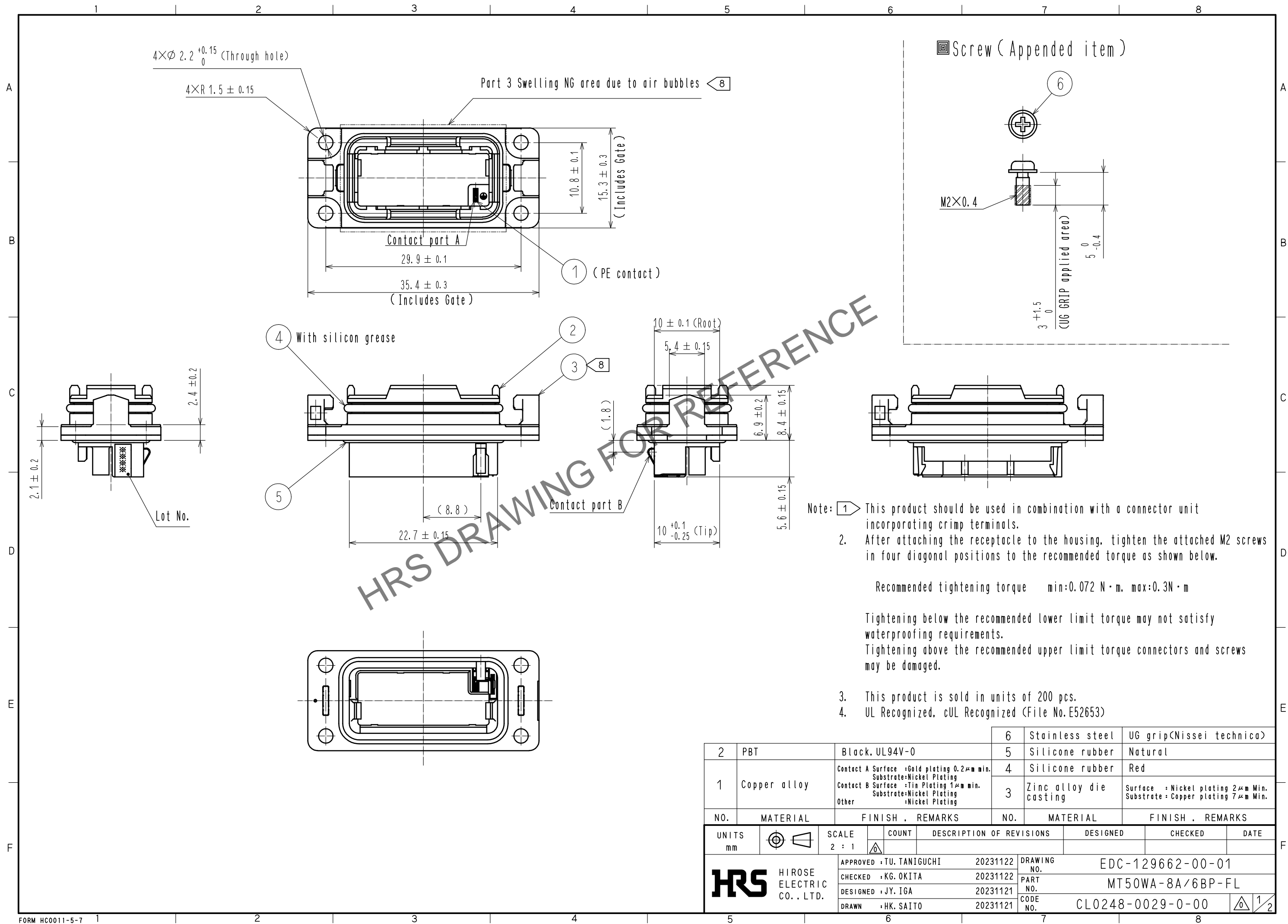


Jan.1.2026 Copyright 2026 HIROSE ELECTRIC CO., LTD. All Rights Reserved.
In case of consideration for using Automotive equipment / device which demand high reliability, kindly contact our sales window correspondents.



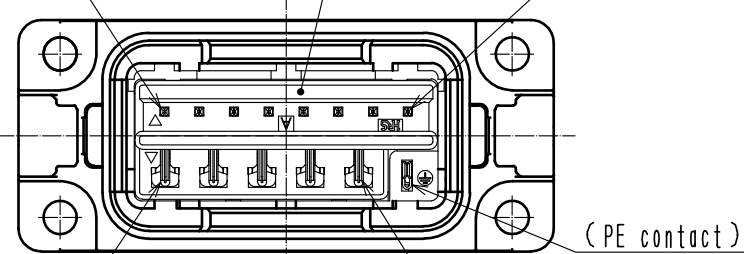
Jan.1.2026 Copyright 2026 HIROSE ELECTRIC CO., LTD. All Rights Reserved.
In case of consideration for using Automotive equipment / device which demand high reliability, kindly contact our sales window correspondents.

1 Built-in Phase Diagram

MT50A-2426PCFA
CL0248-0003-5-00
(Signal P Contact No.1)

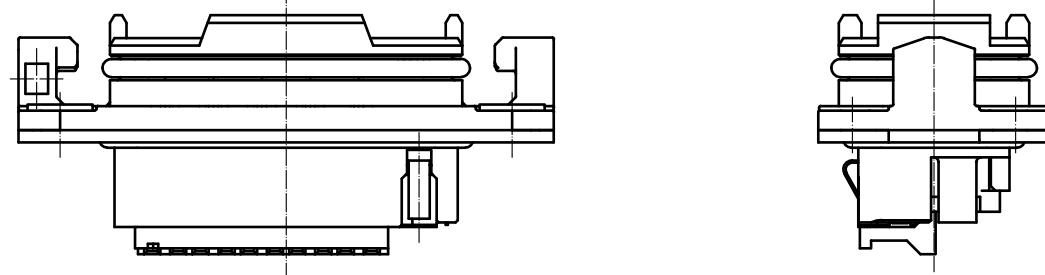
MT50W-8A/6BP-C(11)
CL0248-0007-6-11
(P Housing)

MT50A-2426PCFA
CL0248-0003-5-00
(Signal P Contact No.8)

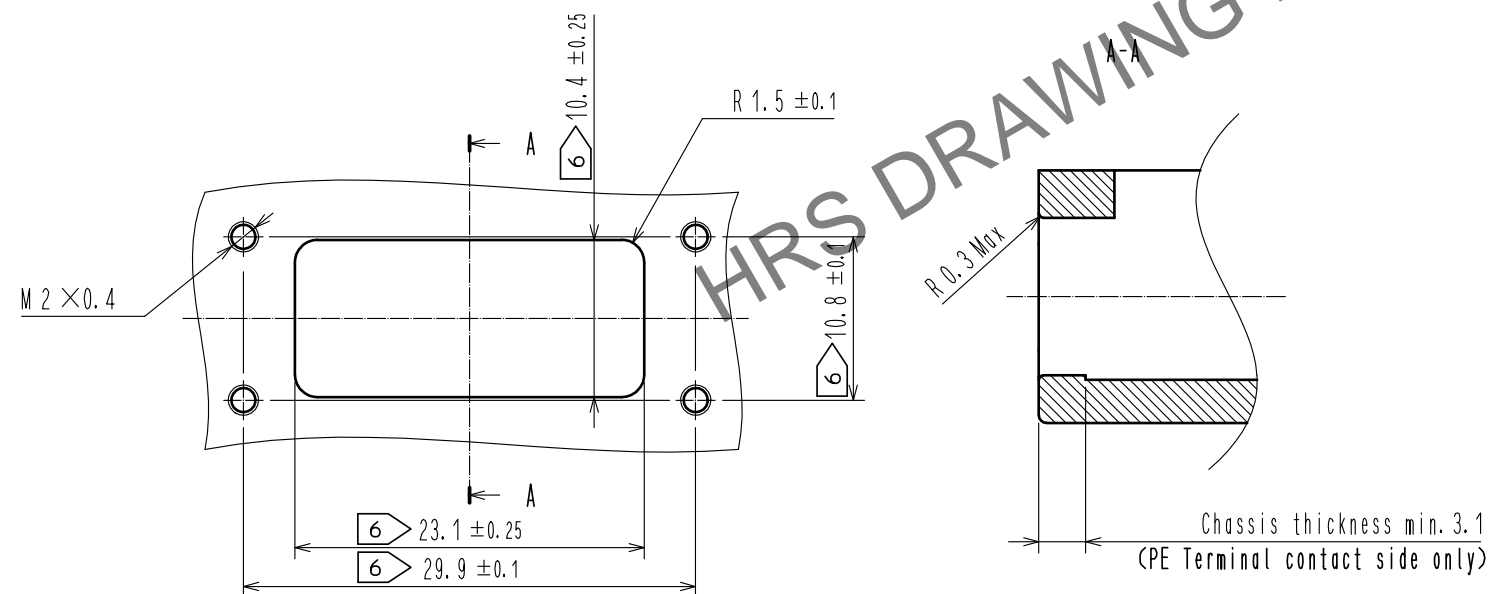


MT50B-1822PCFA
CL0248-0005-0-00
(Power P contact No.1)

MT50B-1822PCFA
CL0248-0005-0-00
(Power P contact No.5)

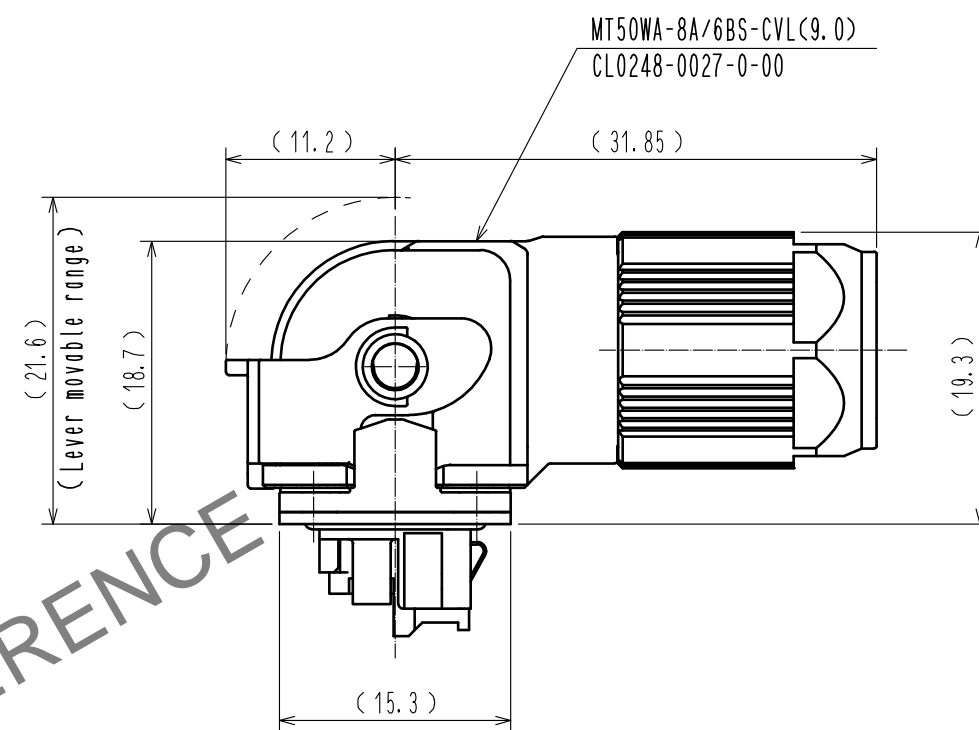


5 Mounting panel reference diagram



- Note: 5 Please consider the mating direction of the connector, as the receptacle can be inserted into the chassis in either direction.
- 6 Keep also in mind that the receptacle hole center line and the center line between the screw holes deviation shall not exceed 0.05mm.
7. Please refer to ETAD-E3191 for the cable assembly.
- 8 On the exterior surface of Part number 3, several swelling due to air bubbles may be on the surface excluding the swelling NG area due to air bubbles.
In addition, there may be several dents and dings on the exterior surface of part number 3.
Details will depend on the appearance limit samples to be exchanged separately.
For manufacturing reasons, two of the four holes in part number 3 have unplated spots on the inside of the holes.
9. For details of the packaging method of this product, refer to ETAP-E3278-01.

Mating state drawing



HRS

DRAWING NO.	EDC-129662-00-01
PART NO.	MT50WA-8A/6BP-FL
CODE NO.	CL0248-0029-0-00

2/2